

PRIME[®]

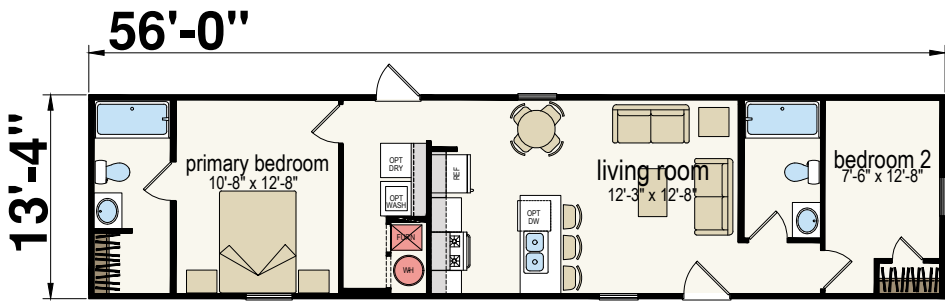


Peake

1456H22P01

Alternate Option Available: 1456H22P02 - Peake Reverse Aisle

Two Bed | Two Bath | 747 sq. ft.

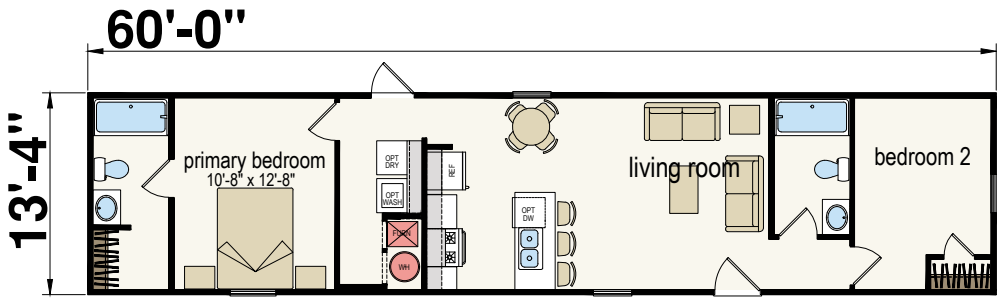


Crest

1460H22P01

Alternate Option Available: 1460H22P0 - Crest Reverse Aisle

Two Bed | Two Bath | 800 sq. ft.

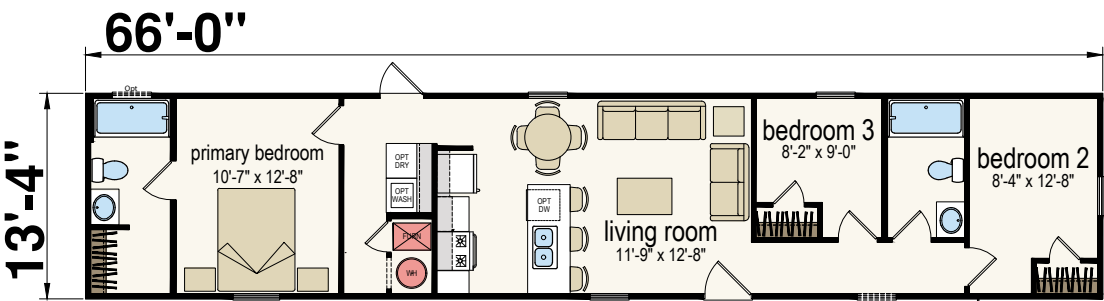


Zenith

1466H32P01

Alternate Option Available: 1466H32P01 - Zenith Reverse Aisle

Three Bed | Two Bath | 880 sq. ft.

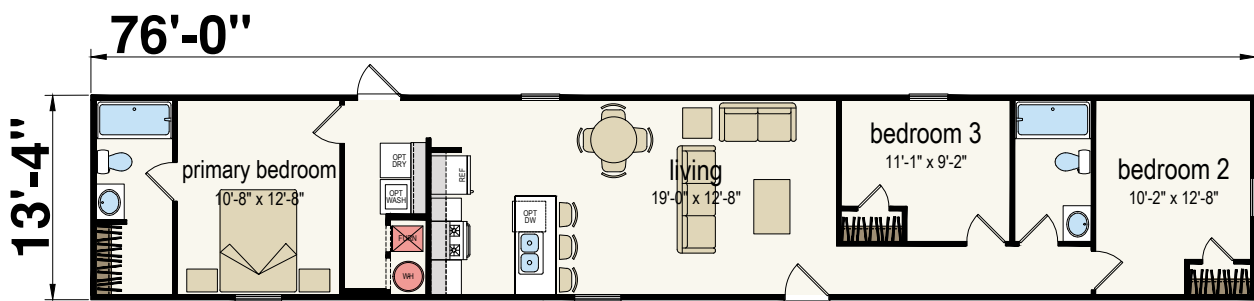


Summit

1476H32P01

Alternate Option Available: 1476H32P02 - Summit Reverse Aisle

Three Bed | Two Bath | 1,013 sq. ft.

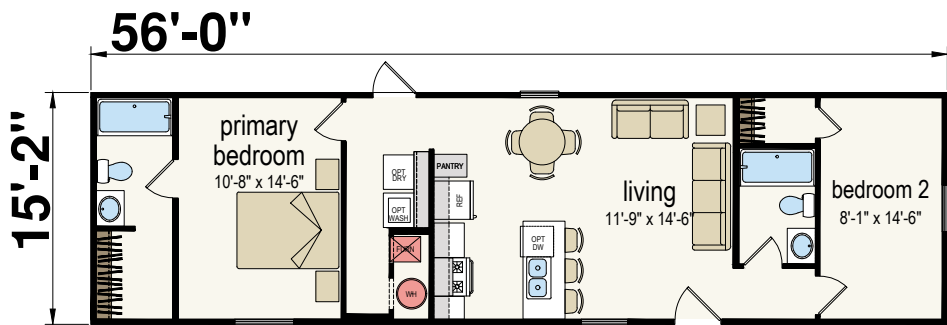


Barkley

1656H22P01

Alternate Option Available: 1656H22P02 - Barkley Reverse Aisle

Two Bed | Two Bath | 849 sq. ft.

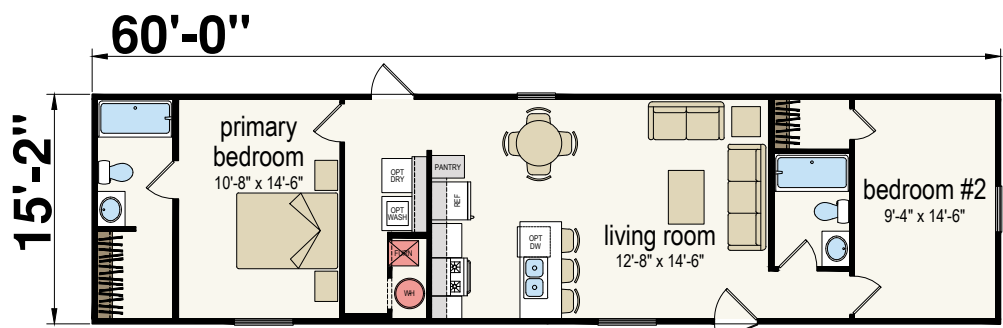


Spire

1660H22P01

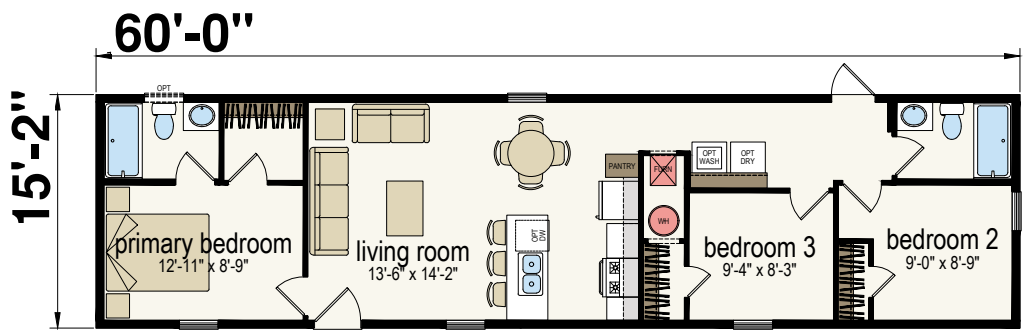
Alternate Option Available: 1660H22P02 - Spire Reverse Aisle

Two Bed | Two Bath | 910 sq. ft.



Casey
1660H32P05

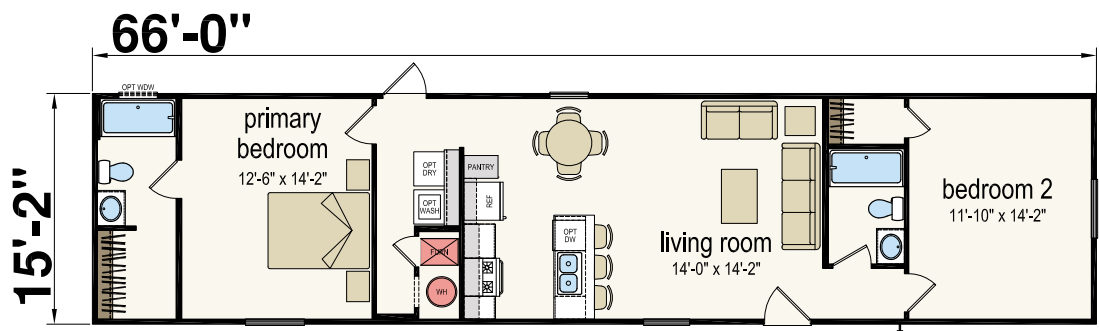
Three Bed | Two Bath | 910 sq. ft.



Edmonson
1666H22P01

Alternate Option Available: 1666H22P02 - Edmonson Reverse Aisle

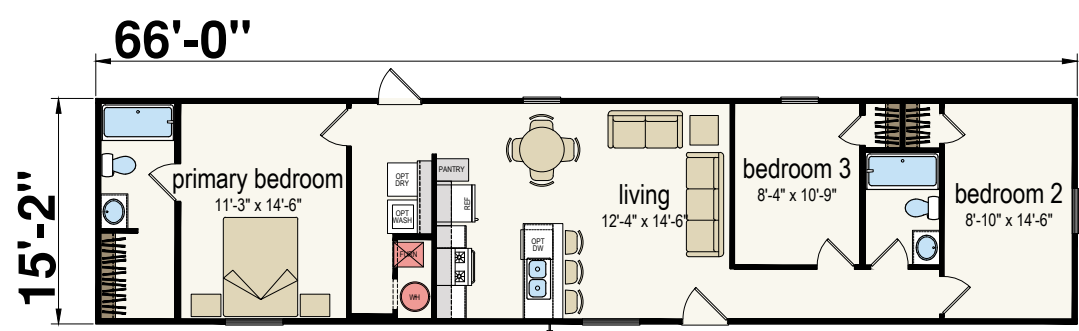
Two Bed | Two Bath | 1,000 sq. ft.



Vertex
1666H32P01

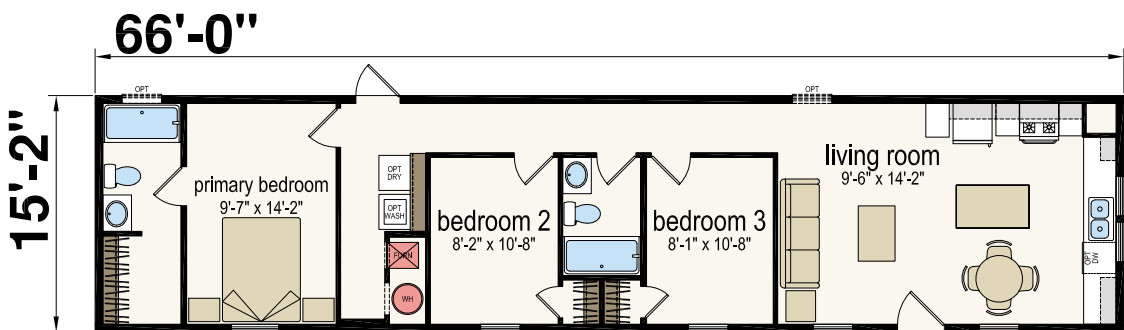
Alternate Option Available: 1666H32P02 - Vertex Reverse Aisle

Three Bed | Two Bath | 1,000 sq. ft.



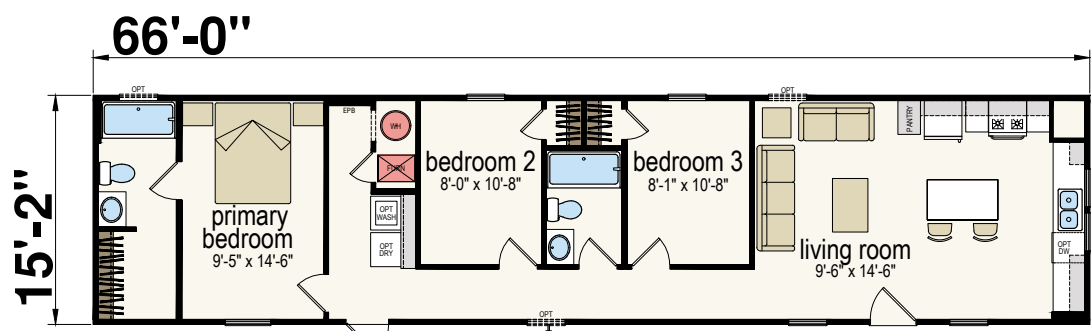
Hickman
1666H32P07

Three Bed | Two Bath | 1,092 sq. ft.



Pendleton
1666H32P09

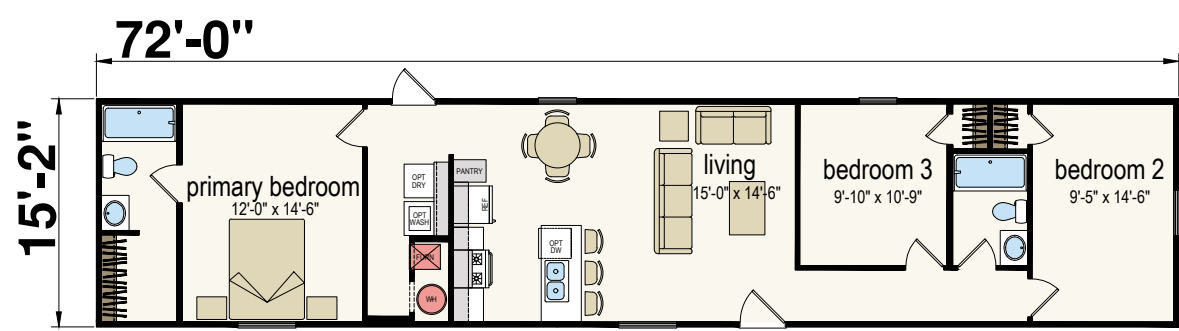
Three Bed | Two Bath | 1,000 sq. ft.



Bardstown
1672H32P01

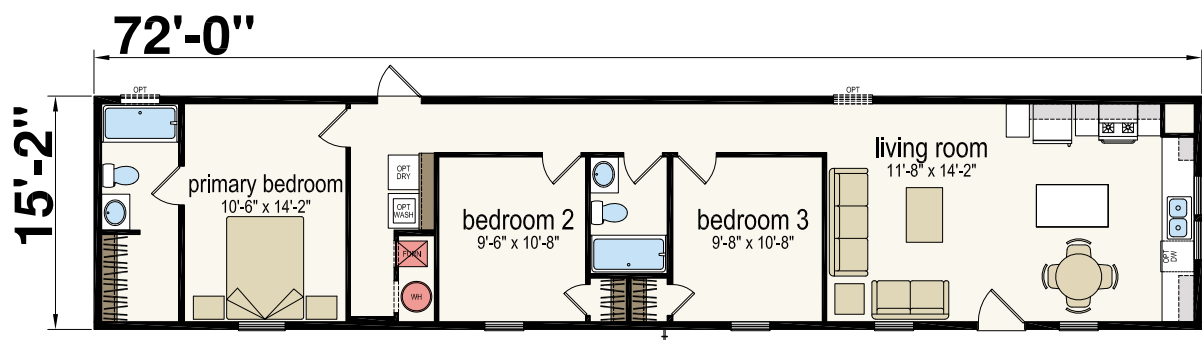
Alternate Option Available: 1676H32P02 - Bardstown Reverse Aisle

Three Bed | Two Bath | 1,092 sq. ft.



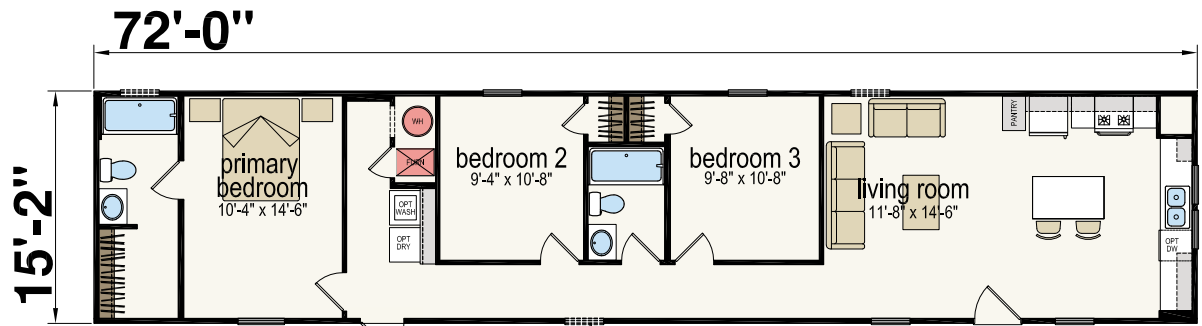
Ballard
1672H32P07

Three Bed | Two Bath | 1,092 sq. ft.



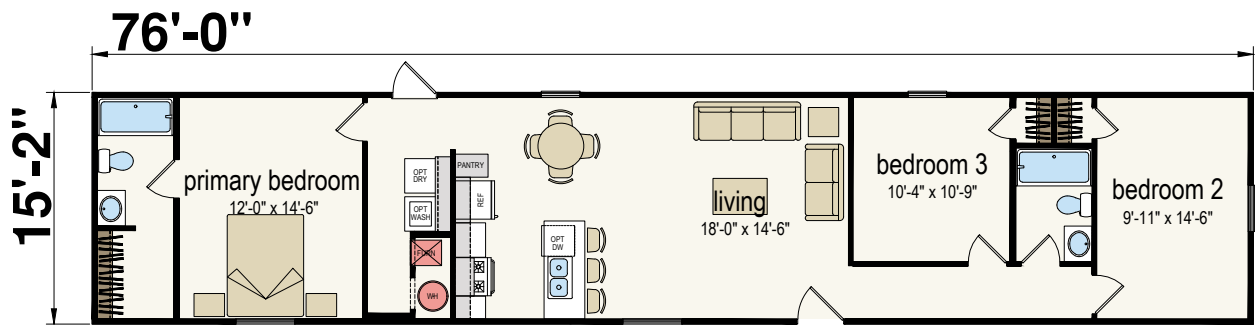
Powell
1672H32P09

Three Bed | Two Bath | 1,092 sq. ft.



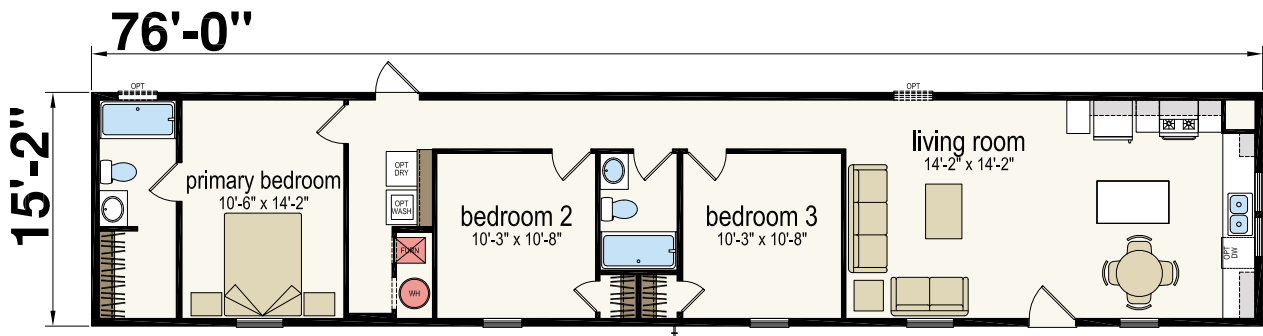
Ridge
1676H32P01

Three Bed | Two Bath | 1,152 sq. ft.



Somerset
1676H32P07

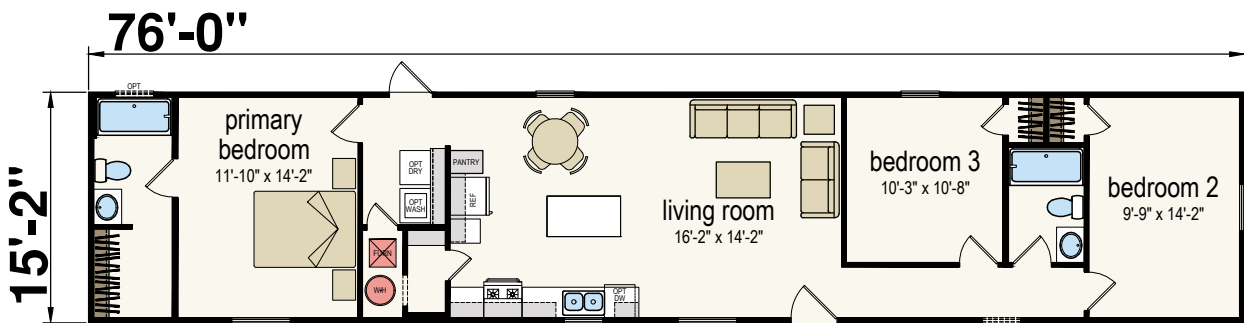
Three Bed | Two Bath | 1,152 sq. ft.



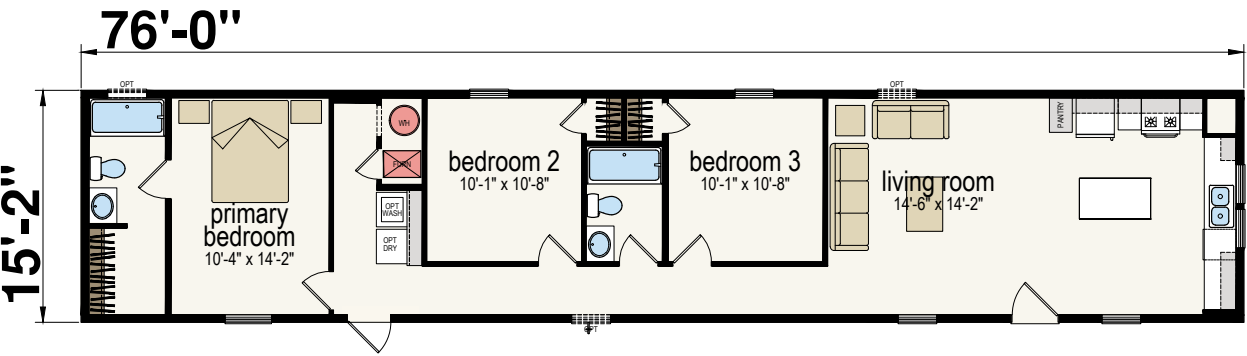
Monte
1676H32P06

Alternate Option Available: 1676H32P05- Monte Reverse Aisle

Three Bed | Two Bath | 1,152 sq. ft.



Three Bed | Two Bath | 1,152 sq. ft.



Decor Options

INTERIOR

Walls



Sketch Prime

Cabinets



Chai Oak Shaker Door



Arctic White Shaker Door

Vinyl Flooring



AF020 Aged European Oak Natural

Countertops



White Carrara



Roca Bosca

EXTERIOR

Shutters



Clay



White



Blue



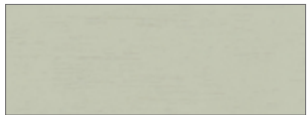
Black

Shingles



Black

Vinyl Siding



Olive



Flint



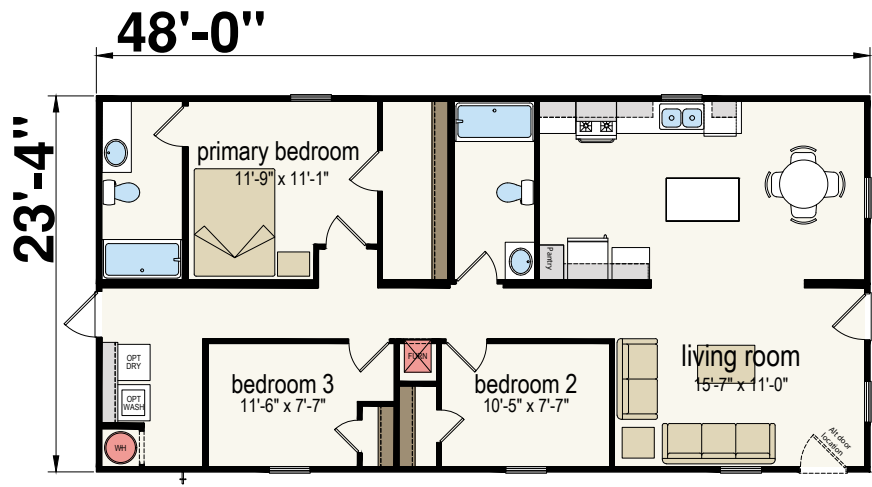
Clay



White

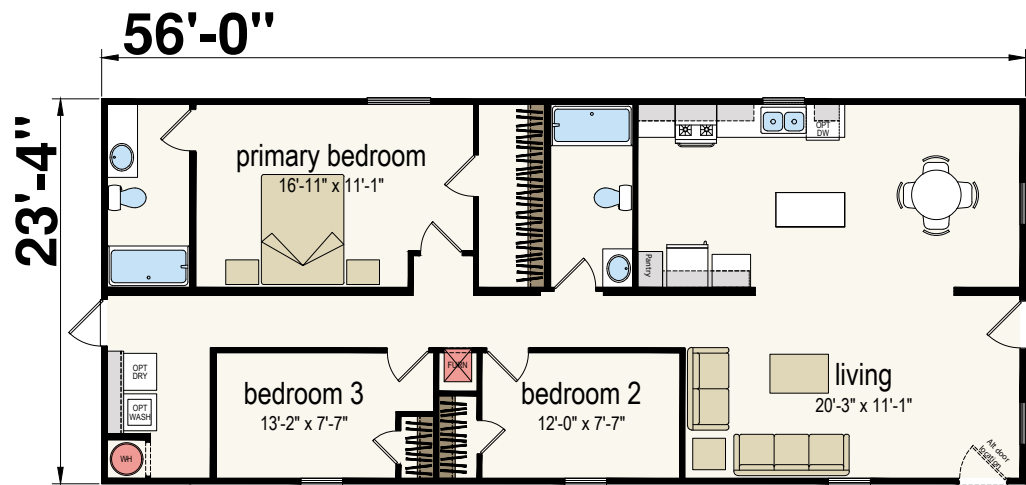
Plateau
2448H32P02

Three Bed | Two Bath | 1,120 sq. ft.



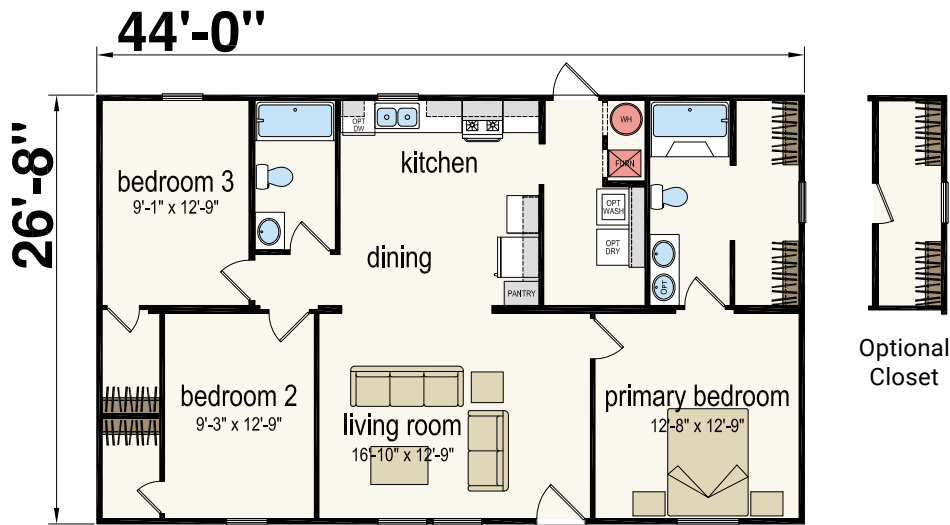
Horizon
2456H32P02

Three Bed | Two Bath | 1,306 sq. ft.



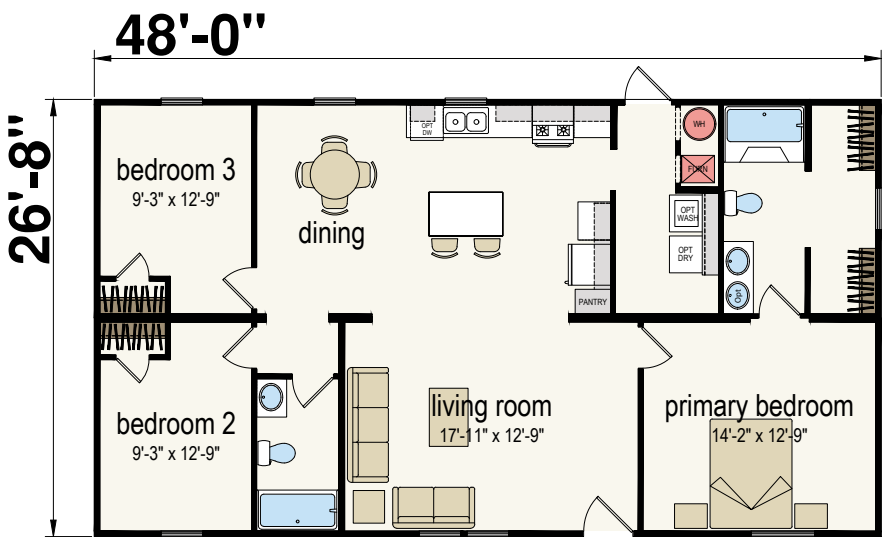
Estill
2844H32P01

Three Bed | Two Bath | 1,173 sq. ft.



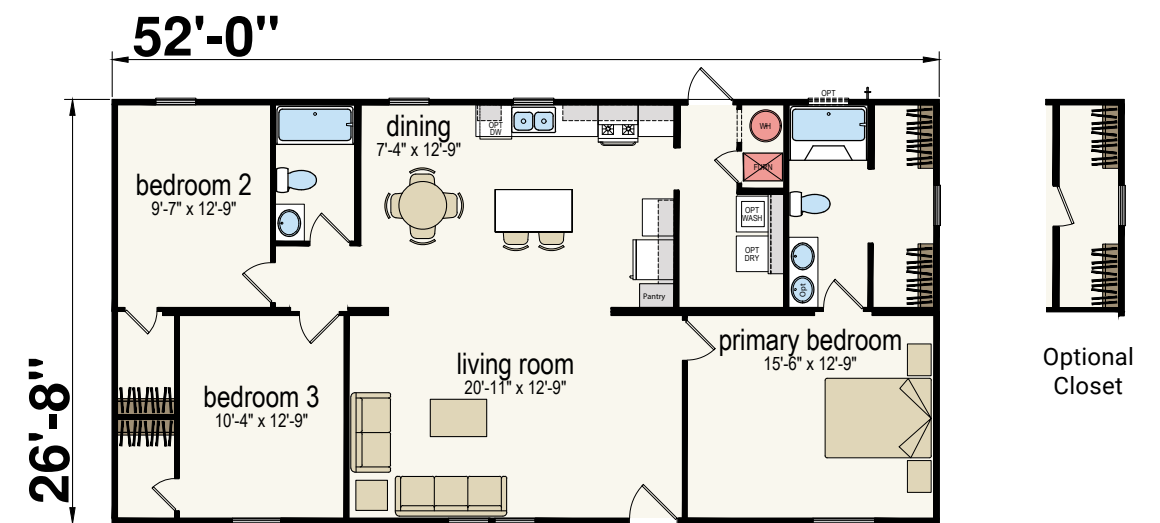
Churchill
2848H32P06

Three Bed | Two Bath | 1,280 sq. ft.



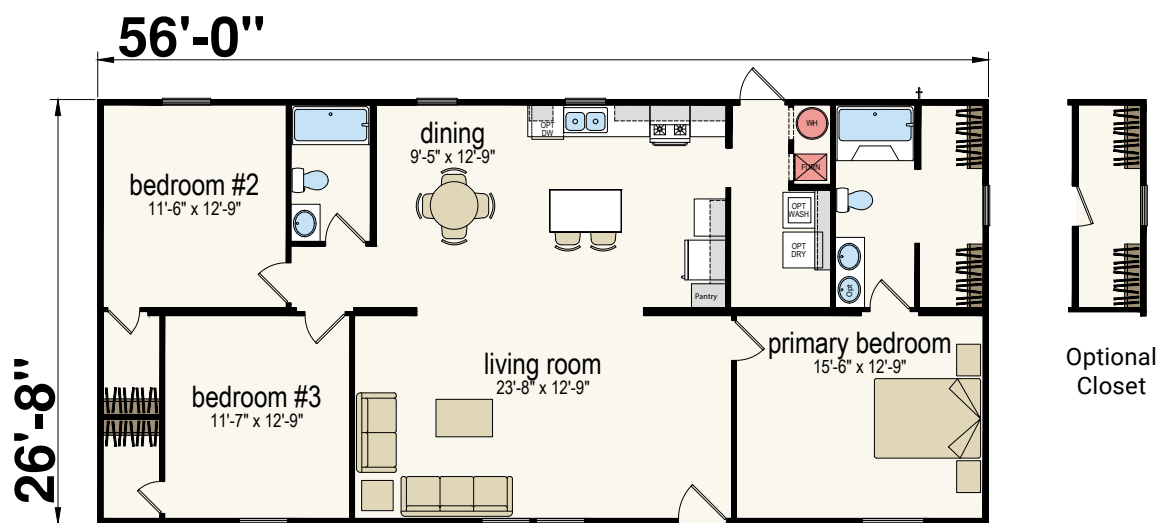
Mercer
2852H32P01

Three Bed | Two Bath | 1,387 sq. ft.



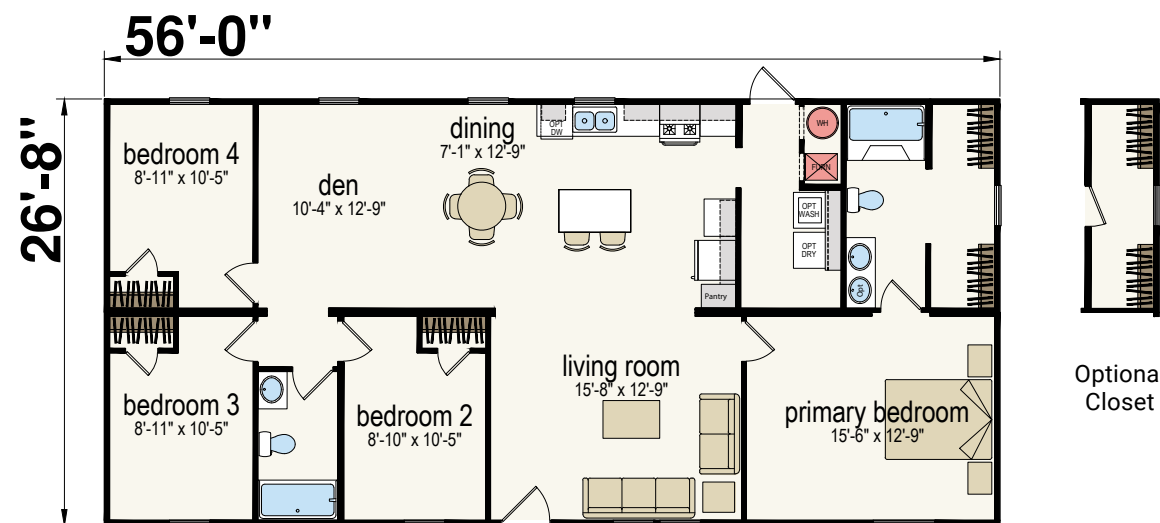
Apex
2856H32P01

Three Bed | Two Bath | 1,493 sq. ft.



Richmond
2856H42P01

Four Bed | Two Bath | 1,493 sq. ft.





Standard Features

PRIME®

Construction

- Recessed Frame
- Detachable Hitch
- 48" O.C. Outriggers
- 2x6 Exterior Sidewalls - 16" O.C.
- 2x8 Floor Joist - 16" O.C. on 16' Wide
- 2x6 Floor Joist - 16" O.C. on 14' Wide
- R-19 Sidewall Insulation
- R-11 Floor Insulation
- R-28 Roof Insulation
- 7/16" OSB Roof Sheathing
- 30lb PSF Roof Load
- 19/32" OSB Floor Decking
- 8' Sidewall w/ Light Textured Ceiling

Exterior

- 3-Tab Shingle (Black)
- Shutters (Door Side & Hitch End)
- Vinyl Low-E Windows (No Grids)
- White Corner Posts

Interior

- Main Panel VOG Throughout
- Vinyl Wrapped Battens
- Factory Select Linoleum Throughout
- 7" Stainless Steel Sink
- Vanity Mirror in Both Baths

- Laminate Countertops
- 30" Overhead Cabinets
- Shelf Over Refrigerator
- Lined Cabinets
- 3/4" MDF Stiles
- 4-Drawer Bank in Kitchen
- 30" White 2-Panel Interior Doors
- Washer/Dryer Shelf

Plumbing / Heating

- Carrier Electric Furnace
- 30 Gallon Electric Water Heater
- Whole House Shut Off
- Exterior Faucet
- In-line Heat

Electrical

- 200 AMP Service
- LED Can Lights Throughout
- Exterior Receptacle
- Exterior Lights at Both Doors

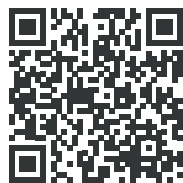
Appliances

- Electric Range - Black
- 18 Cu.Ft. Refrigerator - Black
- 30" Vertical Vent Range Hood

PRIME Plus Package

- Fiberglass 1-Piece Shower Primary
- Fiberglass 1-Piece Tub/Shower in Second Bath
- Porcelain Lavs
- Metal Faucets Throughout
- Shaker MDF Cabinet w/ Full Overlay
- Adjustable Center Shelves in Overhead
- Round Cabinet Knobs
- 6-Panel Residential Front & Rear Doors
- 4" Laminate Backsplash
- Upgraded Ice Dam Protection
- Range Hood Vented Through Roof

Due to continuous product development and improvement, prices, specifications and material are subject to change without notice or obligation. Square footage and other dimensions are approximate. Included images are artist renderings and are not intended to be an accurate representation of the homes. Renderings and Floor Plans may be shown with optional features and/ or third-party additions that may not be available in all regions or situations. Exterior Renderings may include onsite builder-built options not offered by Champion Home Builders, Inc.



Scan to view
homes near you!



CHAMPION[®]
HOMES

1418 S. 13th St. | Decatur, IN 46733