



PRODUCT GUIDE

APRIL 2025



ROCHESTER, IN

CONTENTS



●
04

Structural Additions &
Options

●
13

Fireplace Options

●
16

Window Options

●
20

Plumbing Options

●
29

Electric Options

●
30

Exterior Trim Options

●
33

Exterior Door Options

●
37

Siding & Shingle
Options

●
39

Cabinet Styles

●
40

Specialty Cabinet &
Range Hood Options

●
49

Ceramic Tile Options

●
51

Countertop Options

●
55

Desk & Island Options

●
61

Interior Door and Trim
Options

●
63

Flooring Options

●
67

Interior Finish Options

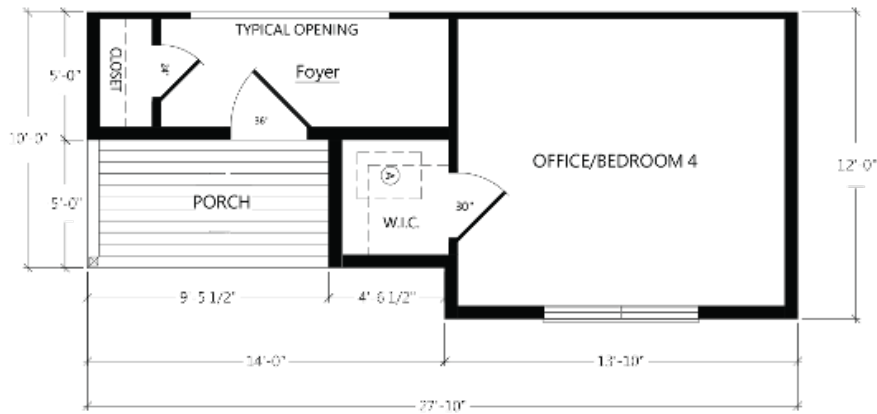
STRUCTURAL ADDITIONS & OPTIONS



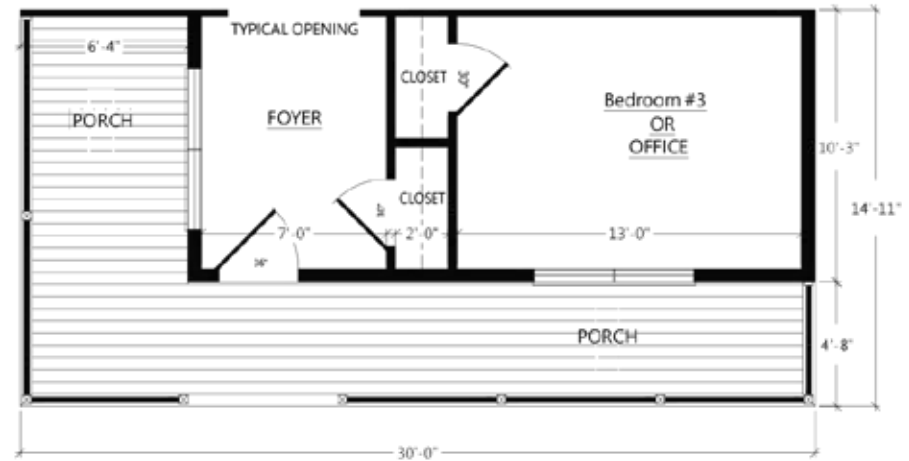
ADD A THIRD BOX CONFIGURATION

There are many customizations that can be added to the design of our homes. With your builder, adding more square footage, garages, and porches on site is always an option. All of these are popular ideas when building a home and we have designed modules, or boxes, to specifically tackle several of these at once. These modules can be added to many of our floor plans and with this one addition, space for an extra bedroom, office, or even workout room can be added. Along with extra interior space, front porch additions can be added for a dramatic change in curb appeal as well as adding an outdoor living space.

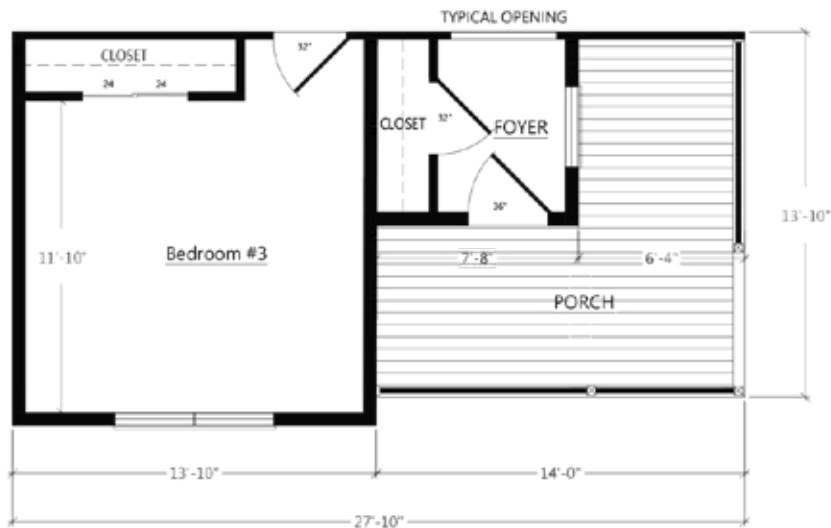




PORCH UNIT A: OP2008R



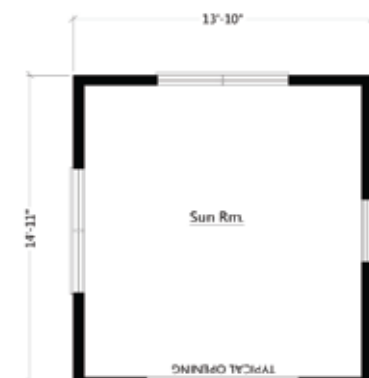
PORCH UNIT B: OP2009R

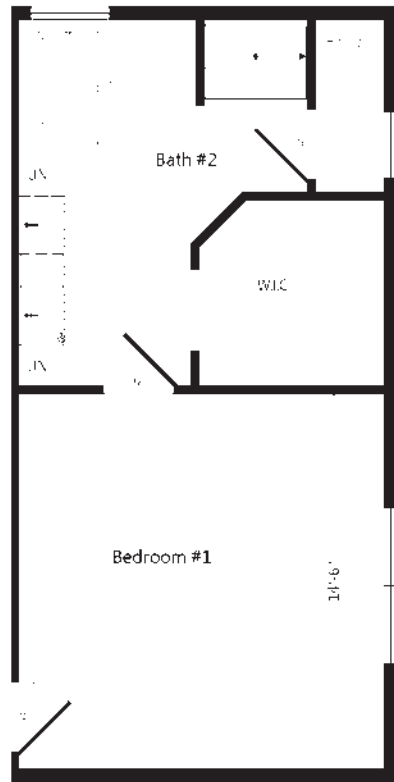


PORCH UNIT C: OP2010R

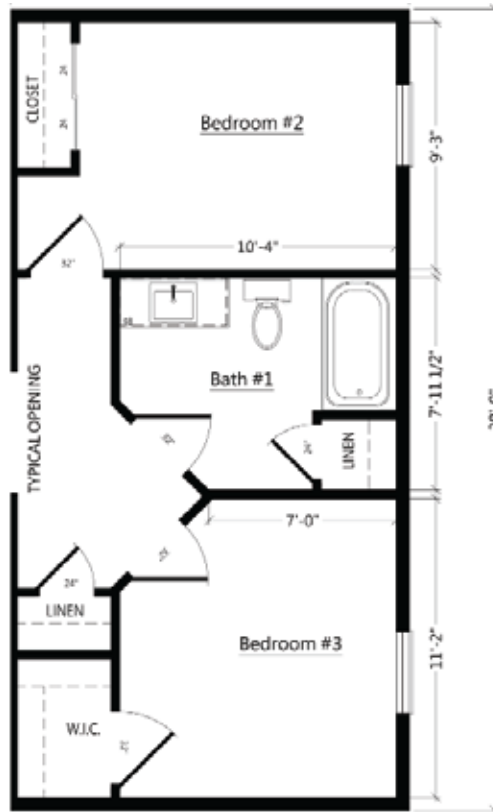


SUNROOM: OP2011R

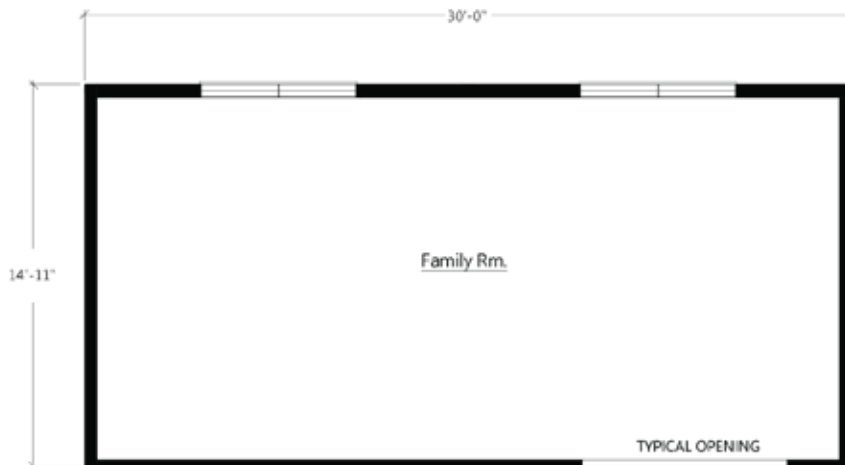




BED BATH UNIT A: OP2003R



BED BATH UNIT B: OP2004R

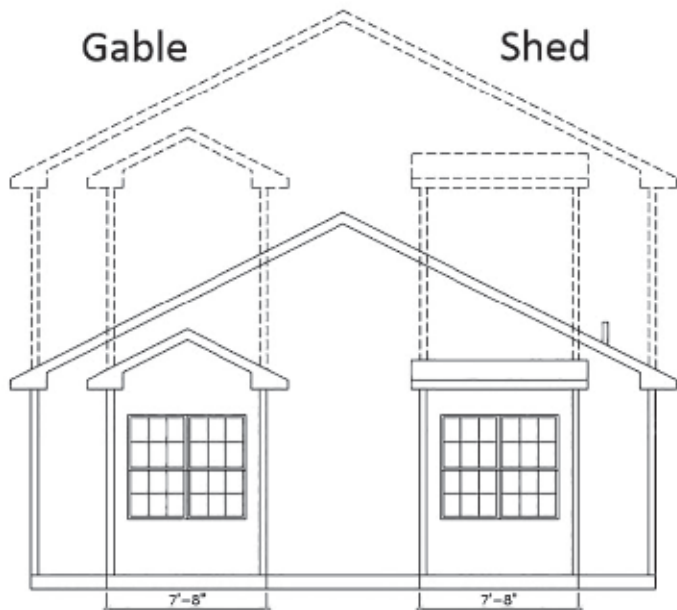


FAMILY ROOM



We have designed modules specific to getting more bedrooms and bathrooms in a home. These are especially appealing when added to one of our two story floor plans. Many people have used the bedroom addition modules for adding a main floor master suite or an in-law suite. Finally, we have a living room module that can be added to the side or back of almost any of our designs for additional living/family room. All of these additional boxes will enhance the dimension to a home creating a stunning exterior.

26ft: OP2005R
28ft: OP2006R
30ft: OP2007R



WHAT IS A ROOF RETURN?

Roof returns are an option on some of our gables and bump outs, a familiar term for these are eyebrows. The shingled line of the roof shown on the left is a good example. A roof return can be used to add decoration to a gable or as a break between a change in exterior façade.

GABLE VS SHED

We offer two roof profiles on our dormers and bump outs. A gable style roof, where the roof lines come to a peak at the front, can be used to accent a traditional, transitional, or Victorian style home. A shed roof is a low sloped roof that moves in the same directions as the main roof line of a home. Most people use shed roofs to provide a craftsman, transitional, or even modern look.

DUTCH GABLE BUMP-OUT

Available on 6/12 or 9/12 Ranch or Two Story



No Roof Return Bump-out
Shown with 8' Sidewalls,
(2) 3050 Operable Windows,
and Lineals.

OP2013AR

GABLE BUMP-OUT

Available on 6/12 or 9/12 Ranch or Two Story



Roof Return Bump-out
Shown with 8' Sidewalls,
(2) 3050 Operable Windows,
and Lineals.

Ranch: OP2016AR

Two Story: OP2028R

Roof Return Bump-out
Shown with 8' Sidewalls,
(2) 3050 Operable Windows,
and Lineals.

OP2014AR



No Roof Return Bump-out
Shown with 8' Sidewalls,
(2) 3050 Operable Windows,
and Shutters.

Ranch: OP2015AR

Two Story: OP2024R



END WALL BUMP-OUT

Available on 6/12 or 9/12 Ranch or Two Story



10" Gable Bump Out
Shown with 3050 windows

Ranch: OP2011AR

Two Story: OP2019R

TWO STORY GABLE BUMP-OUT

Available on 6/12 or 9/12 Two Story



Square Window Bump-out with (2) 3050
Windows and Shutters

OP2024R

RECESSED ENTRY



Recessed entry with stone or siding to
to bottom of door.

Stone: **OP2045AR**

Siding: **OP2044AR**

10" Shed Bump-out
Shown with 3050 windows

Ranch: OP2018AR

Two Story: OP2020R



NOTE

Bumpout does not come
standard with windows.

GABLE DORMERS



6' 1" Gable Dormer with 3050 operable or fixed window
OP2033R
Available 9/12 or 12/12



11' Wide Gable Dormer with (2) 3050 fixed or operable Windows
OP2031R
Available 12/12

SHED DORMERS

Available 9/12 or 12/12



6' 1" Shed Dormer with 2030 operable or fixed Windows
OP2035R

11' Wide Shed Dormer with (4) 2030 fixed or operable Windows
OP2034R



8' COVERED PORCH

Available in 6/12, 9/12 Ranch Only



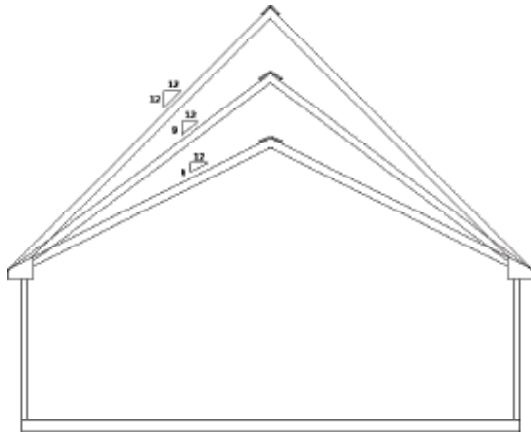
Full width porch or half width available.
Porches can only be built on gable ends.
OP2002R

WHY YOU SHOULD ADD DORMERS

Adding one or more dormers to a roof's structure can turn a rather bland roofline into one with architectural interest and curb appeal. Not only do dormers improve the aesthetics of a home, but this upgrade will also make a home more appealing to buyers. When added to a home, dormers provide much-needed natural light and another view of the outdoors. Adding a large dormer will increase the usable space of a room. They are perfect spots for a reading nook, small office space or a kids' play area.



BENEFITS OF A HIGHER ROOF PITCH



Non Habitable (no bedrooms/bathrooms.
Intended for storage or bonus rooms)
9/12 with 3/4 deck and 2x6 attic endwalls
with R25 insulation under floor.

(habitable option available)



Habitable 12/12 with 3/4
deck and 2x6 endwalls. R30
insulation under floor

STARTING WITH 6/12

All of our 2 box standard ranch homes begin as a 6/12 roof pitch. Upgrade to a 9/12 or a 12/12 roof pitch to take advantage of exterior options such as a higher roof pitch and the ability to add dormers.

ATTIC SPACE & LIVING SPACE

All of our 2 box standard ranch homes begin as a 6/12 roof pitch. Upgrade to a 9/12 or a 12/12 roof pitch to take advantage of exterior options such as a higher roof pitch and the ability to add dormers.

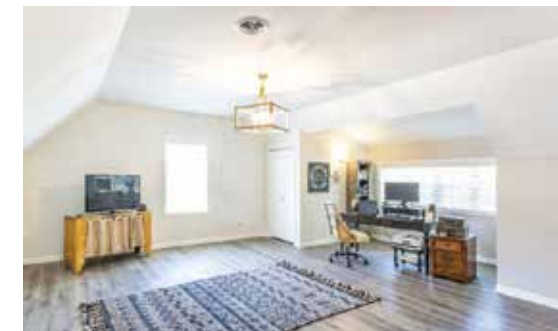
EXTERIOR APPEAL

All of our 2 box standard ranch homes begin as a 6/12 roof pitch. Upgrade to a 9/12 or a 12/12 roof pitch to take advantage of exterior options such as a higher roof pitch and the ability to add dormers.



Stairway Rail System
Handrail is not provided by
RHI.
OP30033R

UPSTAIRS 12/12 FINISHED ON SITE



9/12 CATHEDRAL



9/12 Cathedral shown with (2) 3/0 x 3/0 fixed windows & (1) 3/0 x 6/0 fixed window. Also available with (2) optional patio doors.

SILVERLINE

26 ft Wide: [OP3000R](#)
28 ft Wide: [OP3001R](#)
30 ft Wide: [OP3002R](#)

ANDERSEN

26 ft Wide: [OP3075R](#)
28 ft Wide: [OP3076R](#)
30 ft Wide: [OP3077R](#)

12/12 LOFTED CAPE



12/12 Lofted Cape shown with (2) 3/0 x 3/0 fixed windows & (1) 6/0 x 6/0 fixed window. Also available with (2) optional patio doors.

SILVERLINE

26 ft Wide: [OP3025R](#)
28 ft Wide: [OP3028R](#)
30 ft Wide: [OP3031R](#)

ANDERSEN

26 ft Wide: [OP3078R](#)
28 ft Wide: [OP3079R](#)
30 ft Wide: [OP3080R](#)

LOFTED 9/12, FINISHED ON SITE

All cathedral and loft options have a similar interior to below



12/12 LOFTED CAPE



12/12 Lofted Cape shown with (2) fixed trapezoid windows & (1) fixed picture window. Also available with (2) optional patio doors.

SILVERLINE

26 ft Wide: [OP3027R](#)
28 ft Wide: [OP3030R](#)

ANDERSEN

26 ft Wide: [OP3026R](#)
28 ft Wide: [OP3029R](#)

12/12 Lofted Cape shown with (2) fixed trapezoid windows & (1) fixed twin picture window. Also available with (2) optional patio doors.

SILVERLINE

30 ft Wide: [OP3032R](#)

ANDERSEN

30 ft Wide: [OP3033R](#)

CUSTOMIZE YOUR FIREPLACE



Digital depictions of Fireplaces does not reflect actual final color



BUCKS CREEK



CHARLESTON



GALVESTON GRAY



HAMPTON GRAY



GRAPHITE



PRICE

FARMHOUSE MANTLE

Wrap around mantle, stain matches trim package

*Shiplap not available through RHI [OP4024R](#)



60 INCH. BEAM MANTLES

Mantles constructed out of Maple [OP4023R](#)

Farmstead



Weathered



FIREPLACE A



Fireplace A Stone front corner fireplace. Shown with Charleston Stone & Traditional Mantle

Ranch Gas: **OP4001AR** Wood: **OP4000AR**

Cape Gas: **OP4002R** Wood **OP4003R**

FIREPLACE C



Fireplace C Stone front flat fireplace. Shown with Hampton Gray Stone & Traditional Mantle

Ranch Gas: **OP4006AR** Wood: **OP4007AR** Cape Gas: **OP4004R** Wood: **OP4005R**

FIREPLACE F



Fireplace F Rave fireplace. Includes: Modern Fire place with Black Trim

Ranch Gas: **OP4013AR**

Cape Gas: **OP4012R**

FIREPLACE E



Fireplace E Stone front half wall fireplace. Shown with Graphite Stone & Traditional Mantle.

Ranch Gas: **OP4010AR** Wood: **OP4011AR**

Cape Gas: **OP4008R** Wood: **OP4009R**

FIREPLACE H



Fireplace H Stone front fireplace with Farmhouse Mantle. Shown with Bucks Creek stone.

Ranch Gas: **OP4019AR** Wood: **OP4020AR**

Cape Gas: **OP4018R** Wood: **OP4021R**

FIREPLACE G



Fireplace G Farmhouse fireplace. Shown with Bucks Creek Stone front Fireplace. Shelving with raised hearth and mantel, (4) can lights and (2) eyeball lights. Windows are per plan.

Total Length: 17' 4"

Ranch Gas: **OP4017R**

Wood: **OP4015R**

Cape Gas: **OP4016R**

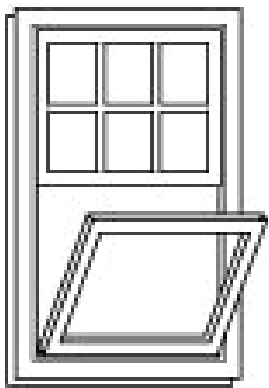
Wood: **OP4014R**

Note: *Media prep outlet is not included

WINDOW OPTIONS



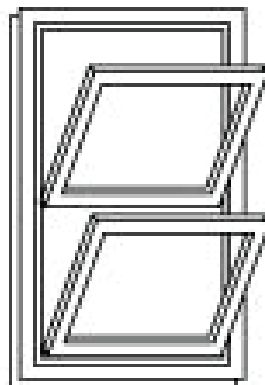
KNOW YOUR WINDOWS



*View from inside

SINGLE HUNG

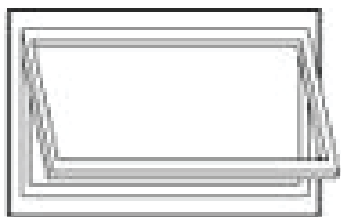
Single-Hung windows allow ventilation through a single operable lower sash.



*View from inside

DOUBLE HUNG

Double-Hung windows have two operating sash that move up and down allowing for ventilation on the top, bottom or both.



*View from outside

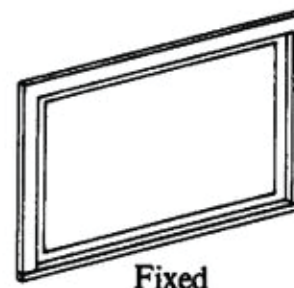
AWNING WINDOW

Awning windows are hinged on the top and open outward from the bottom, allowing for ventilation and protection from the rain.

Often placed higher on walls for privacy or in combination with large stationary windows for a better view.

TRANSOM WINDOW

A window above a door that is usually installed to a horizontal crosspiece over the door.

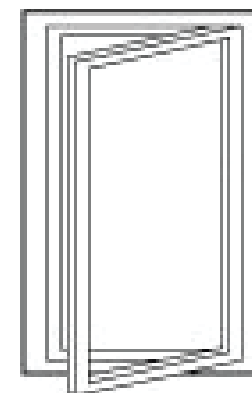


Fixed

CASEMENT WINDOW

Casement windows are hinged on the side and crank open outward to the left or right allowing for full top to bottom ventilation.

Standard above kitchen sinks, casement windows give you the flexibility to group them in stunning combinations.



*View from outside



ADVANTAGES OF SILVERLINE

The Silverline Series offers a great vinyl window option that performs just as well as it looks.

- Low Maintenance Vinyl Interior and Exterior
- Standard with screen & colonial grids
- Casement Window in Kitchen, single hung
- 6' 0" Also available with 9' Sidewall Option
- Available in Double Hung
- Transoms also available
- Energy Star Rated
- Limited Lifetime Warranty

SOME POPULAR SILVERLINE OPTIONS

Vinyl WDO 3050: [OP9038AR](#)

Vinyl WDO 3060: [OP9041R](#)

Vinyl WDO 2030 tempered glass additional: [OP9032AR](#)

Vinyl WDO 2630 tempered glass additional: [OP9037AR](#)

Vinyl WDO 4050 w/two flanking windows: [OP9045R](#)

Vinyl WDO Transom 12 inch: [OP9054AR](#)

Vinyl WDO Awning 3015: [OP9046R](#)

Vinyl WDO 2430 Casement additional: [OP9036AR](#)

Sandtone

White



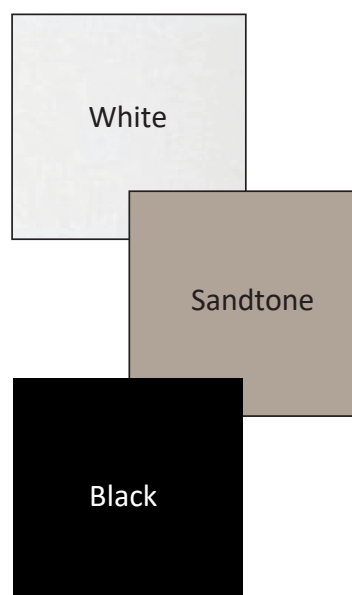
ANDERSEN™
WINDOWS & DOORS



ADVANTAGES OF ANDERSEN

The 400 Series brings you the best overall blend of performance and style to satisfy just about any window or patio door need.

- Interior Wood Painted
- Wood Frame with Exterior Vinyl Clad
- Wood Sashes with Flexacron Finished Exterior
- Standard with screen and colonial grids
- Standard Double Hung with Casement in Kitchen
- Energy Star Rated
- Limited Warranty



SOME POPULAR ANDERSEN OPTIONS

Andersen 400 WDO TW210410: [OP9017R](#)

Andersen 400 WDO TW210510: [OP9020R](#)

Andersen 400 WDO TW20210: [OP9014R](#)

Andersen 400 WDO TW24120: [OP9021R](#)

Andersen 400 WDO Picture 310410 w/ 2 flanking:
[OP9011R](#)

Andersen 400 WDO Transom: [OP9013R](#)

Andersen 400 WDO AR31 Awning 3'x17": [OP9009R](#)

Andersen 400 WDO CW13: [OP9010R](#)

PLUMBING OPTIONS

STANDARD SINKS



Standard stainless steel kitchen sink 8" depth

Standard China Lav Bowl
*Sinks come in square variation



Black Kitchen Sink
-Crafted from Nickel Quartz
-Stain, impact, heat, and scratch resistant
-Sound-deadening material
-Hygiene protection
9" depth
OP6051AR

Kohler Vault Stainless Steel
Single Bowl topmount, 10" depth
OP6055AR



OPTIONAL SINKS



Pedestal Sink
OP6057AR



Washtub installed in cabinet
OP6059AR



Double Lavs
*Sinks come in square variation
OP6053AR

Vault Bar Sink
OP#6050AR



BEST SELLING SHOWERS!

SHOWER OH!



5'x5' shower pan with rainfall showerhead. Standard with two shower heads. No shampoo niche

Ceramic IPO 48" shower in all three tile colors and with a transom window [OP6046R](#)

Panels IPO 48" shower, no window [OP6046R](#)

SERENITY SHOWERS



Shower N3

Serenity ceramic walk in shower, 1/2 wall, and glass, standard with transom window, can light, rainfall showerhead, and Delta components

[OP6043R](#)

Shower N4

Serenity ceramic walk in shower with full bench, 1/2 wall, and glass, standard with transom window, can light, rainfall showerhead, and Delta components

[OP6044R](#)

NOTE: The accent tile shown in the pictures is no longer available.

CHOOSE YOUR FINISHES

BRUSHED NICKEL FAUCET PACKAGE - OP6017AR



Kitchen Faucet



Bathroom Faucet



Stand Alone Tub Faucet



Shower Trim



Tub/Shower Trim

MATTE BLACK FAUCET PACKAGE - OP6017AR



Kitchen Faucet



Bathroom Faucet



Stand Alone Tub Faucet



Shower Trim



Tub/Shower Trim

SERENITY/TRANQUILITY/SHOWER OH! FAUCET OPTIONS

Additional rainfall shower head and two way diverter are automatically included in the serenity, tranquility, and shower OH upgrades



Valve Trim - **OP6017AR**
-Brushed Nickel



Valve Trim - **OP6017AR**
-Matte Black



Rain Showerhead
-Brushed Nickel



Rain Showerhead
-Matte Black

ALTERNATIVE UPGRADES



Bar Sink Faucet - **OP6050AR**
-Brushed Nickel



Bar Sink Faucet - **OP6050AR**
-Matte Black



Handheld Showerhead - **OP6040AR**
-Brushed Nickel



Handheld Showerhead - **OP6040AR**
-Matte Black

Replace the shower head in any shower with a handheld one

SHOWER & TUB OPTIONS

*All Tile showers are standard with Shluter edging



Tub Shower A
60" Tub/ Shower



Tub Shower B
Garden Tub in place of
standard [OP6062AR](#)



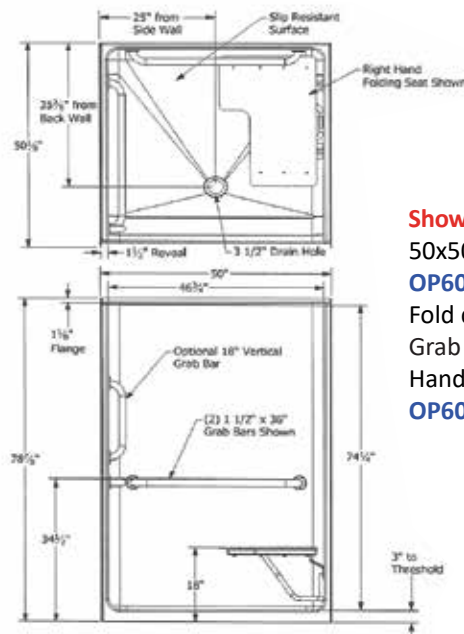
Shower C
48" shower with sliding enclosure
in place of tub/shower.
[OP6030AR](#)
Available with ceramic on walls.
No seat
[OP6029R](#)



Shower D
60" shower with enclosure
in place of tub/shower.
[OP6032AR](#)
Available with ceramic on
walls no seat. [OP6031R](#)



Shower E
60x43 bench shower in
place of standard tub/
shower with enclosure.
[OP6036AR](#)



Shower F Roll in shower
50x50 in place of standard w/(1) grab bar
[OP6049AR](#)
Fold down seat in roll in shower [OP6038AR](#)
Grab bar for tub/shower (1) [OP6039AR](#)
Hand held shower head(shower head only)
[OP6040AR](#)

NOTE: The accent tile
shown in the pictures
is no longer available.



Tub/ Shower G
Fiberglass tub with ceramic tile on
wall. Ivory, Calacatta, or Gray
Includes shampoo niche.
[OP6065R](#)

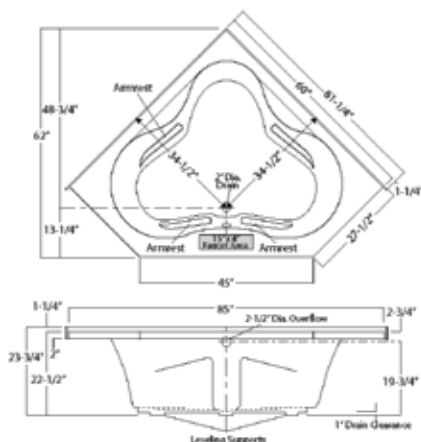


60in Chrome Barn Shower Door

- Contemporary barn door w/ a minimalist design
- Slim stainless header with 18 in. handle
- Brushed Nickel Finish
- 78 3/4" high clear glass panel
- (Available with Shower OH! and 60in. Ceramic Only)

OP6033R

CT-IF-6060



Tub I

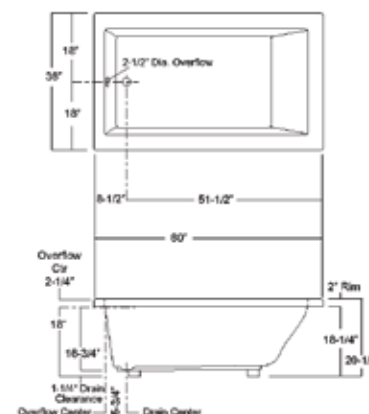
Corner tub standard per plan

Tub M

Ceramic backsplash for corner tub

OP6064R

MB6036



Tub G

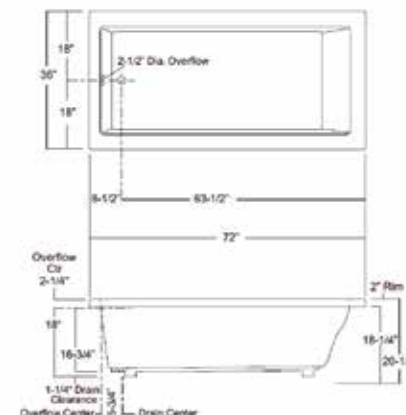
60" tub with laminate top
Standard Per Plan

Tub L

Ceramic top 60" tub,
with 45" of backsplash

OP6063R

MB7236



Tub H

72" tub in w/ laminate top in
place of standard

OP6067AR

Note: Tubs G, H, and L are installed in laminate or ceramic tops depending on your selection. Tubs G, H, L, I, and M all sit on cabinet doors for access, stained to match the vanity cabinet choice



Free Standing Tub

Freestanding
fiberglass tub in
place of standard

OP6077AR

TILE AVAILABLE

See Page 49 for Ceramic Tile

Color Selections for Shower C, Shower D, Tub/Shower G, Tub M, and Tub L

SERENITY SHOWERS

*All Tile showers are standard with Shluter edging

*A Transom Window will replace the block window unless specified

N1 & N3



Shower N1

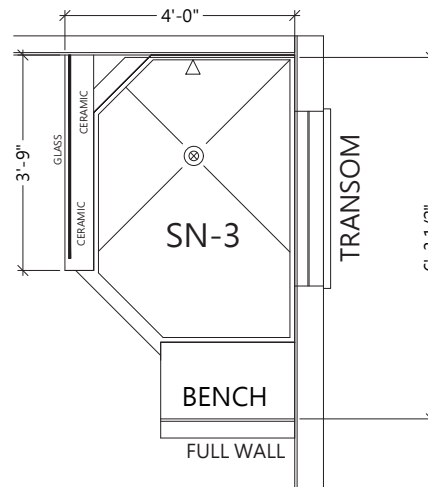
Serenity ceramic walk in shower standard with transom window (not shown), can light, rainfall shower head, and Delta components

OP6041R

Shower N3

Serenity ceramic walk in shower, 1/2 wall, and glass, standard with transom window, can light, rainfall shower-head, and Delta components

OP6043R

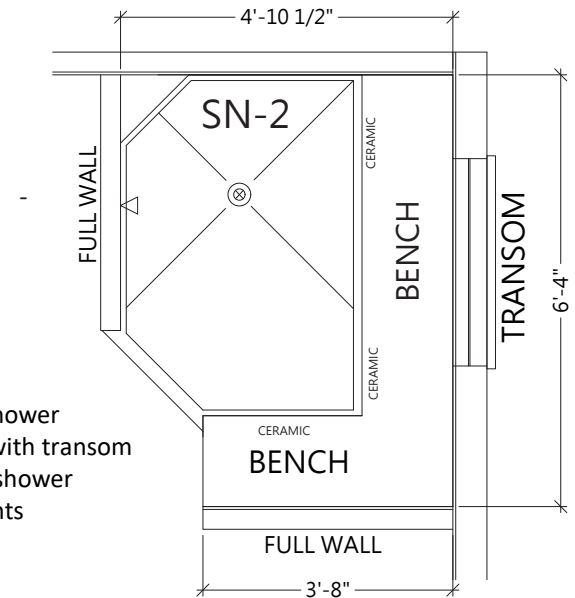


N2 & N4

Shower N2

Serenity ceramic walk in shower with full bench, standard with transom window, can light, rainfall shower head, and Delta components

OP6042R



Shower N4

Serenity ceramic walk in shower with full bench, 1/2 wall, and glass, standard with transom window, can light, rainfall showerhead, and Delta components

OP6044R

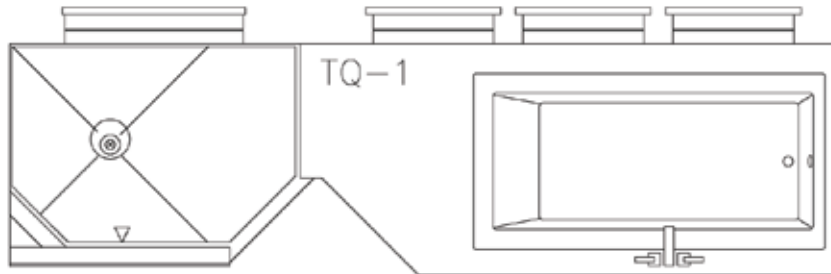
NOTE: The accent tile shown in the pictures is no longer available.

TRANQUILITY BATHS



*All Tile showers are standard with Schluter edging

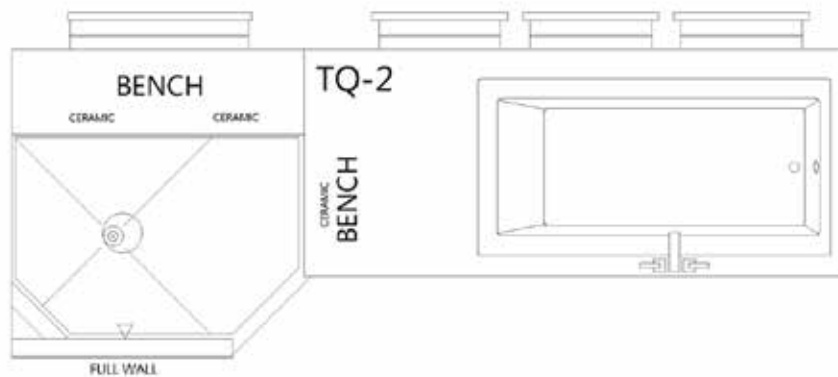
T1 & T2



Shower T1

Includes windows & shutters shown, can light, rainfall shower head and Delta components

OP6021R



Shower T2

Ceramic walk in shower with 72" tub, may change plan, total length 14' 2". Includes full bench, windows & shutters shown, can light, rainfall shower head, and Delta components

OP6022R

T3 & T4

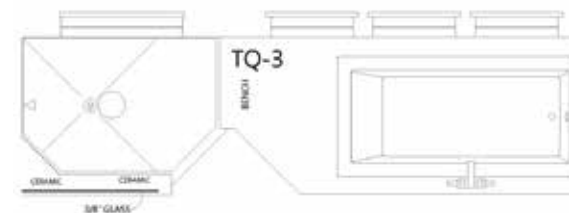
NOTE: The accent tile shown in the pictures is no longer available.



Shower T3

Ceramic walk in shower with 72" tub, may change plan, total length 14' 2". Includes 1/2 wall, and glass, windows & shutters shown, can light, rainfall shower head and Delta components

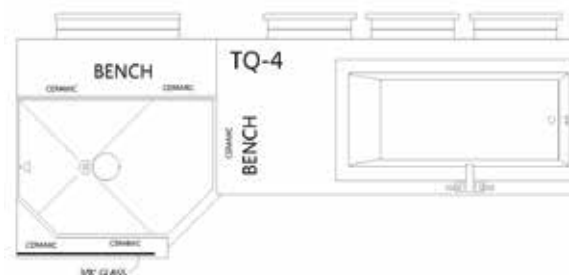
OP6023R



Shower T4

Ceramic walk in shower with 72" tub, may change plan, total length 14' 2". Includes full bench, 1/2 wall with glass, windows and shutters shown, can light, and rainfall shower head Delta components.

OP6024R



ELECTRIC OPTIONS



STANDARD LIGHT FIXTURE OPTIONS - OP19013AR



BRUSHED NICKEL



Dining Room Chandelier



Foyer Chandelier*



Pendant Light



Flush Mount Light

MATTE BLACK



Dining Room Chandelier



Foyer Chandelier*



Pendant Light



Flush Mount Light

ELECTRICAL OPTIONS



USB/Power in place of standard

OP7013AR

USB/Power outlet additional

OP7012AR

White Can Light - Standard in Kitchen, Walk-in Closet, Utility, Hallway, and some Foyers

*Foyer Chandelier is only available in Two-Stories



Exterior Coach Light

EXTERIOR TRIM OPTIONS

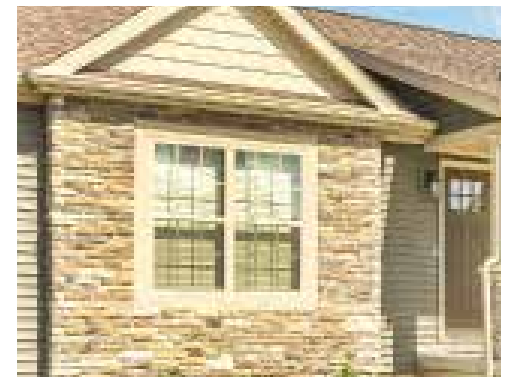


5 1/2" trim (shown) replace shutters (white or clay)



Ranch/Cape **OP11000AR**

Two Story **OP11002R**



EXT Trim-Ranch Trim Package White: Window, Door, Drip Edge, Facia, and Soffit

EXT Trim-Sandtone/Clay trim package Ranch **OP11008AR** Two story **OP11005R** Cape Cod **OP11007R**

EXT Trim- Black trim package. Soffit, Fascia, Drip Edge **OP11026AR**

Board and Batten Shutters replace standard Ranch/Cape **OP11003AR** Two Story **OP11004R**

SHUTTERS

Raised Panel (Standard)/Board & Batten (Upgrade)



WINESTONE



DARK NAVY



WHITE



GRAY



BLACK



PEBBLESTONE
CLAY



PEPPERCORN



SPANISH MOSS



BLACKWATCH
GREEN



RED

EXTERIOR DOOR OPTIONS



DOOR HANDLE OPTIONS

STANDARD EXTERIOR DOOR HANDLE - OP19013AR



Brushed Nickel - Standard



Matte Black - Standard



FEATURES

- Quality craftsmanship ensures durability and premium feel
- Lever design pairs well with the modern, clean lines of contemporary and urban design
- Covered under a limited lifetime mechanical and 5 year finish warranty

PATIO DOORS



Therma-Tru 2 panel hinged grids and screen

OP8063AR



Vinyl 2 panel sliding with screen

OP8064AR



RS130 6068 HPD Therma-Tru 2 panel hinged with blinds and screen

OP8065AR



Andersen Perma Shield 2 panel gliding with screen. No grids. Int/Ext match

OP8062AR



Andersen 2 panel sliding with screen. No grids. Ext. painted white.

OP8061AR



EXTERIOR DOOR OPTIONS

all doors available in Smooth Paint or Wood Grain Stain



Door A

Smooth Painted
Upgrade Steel 6 Panel
Fire Rated 20 min.
Front or 90 min. Rear
OP8000AR



Door C: Full Axis Glass

Painted	Wood Grain
OP8004AR	OP8003AR
Sidelight:	
OP8022AR	OP8021AR
Transom:	
OP8039AR	OP8040AR



Door D: 3/4 glass, 12 light

Painted	Wood Grain
OP8006AR	OP8005AR
Sidelight:	
OP8024AR	OP8023AR
Transom:	
OP8041AR	OP8042AR



Door E: 6 Light, Raised Panel

Painted	Wood Grain
OP8008AR	OP8007AR
Sidelight:	
OP8026AR	OP8025AR
Transom:	
OP8043AR	OP8044AR



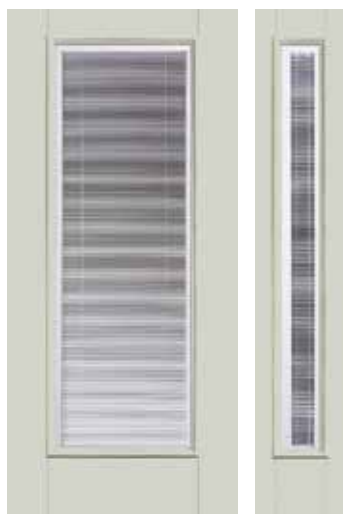
PAINT COLORS





Door F: 9 Light, Exterior Grids

Painted	Wood Grain
OP8010AR	OP8009AR
Sidelight:	
OP8028AR	OP8027AR
Transom:	
OP8045AR	OP8046AR



Door I: Full Glass with Blinds

Painted	Wood Grain
OP8016AR	OP8015AR
Sidelight:	
OP8034AR	OP8033AR
Transom:	
OP8051AR	OP8052AR



Door G: 4 Light

Painted	Wood Grain
OP8012AR	OP8011AR
Sidelight:	
OP8030AR	OP8029AR
Transom:	
OP8047AR	OP8048AR



Door J: Sunburst, External Grids

Painted	Wood Grain
OP8017AR	OP8091AR
Sidelight:	
OP8036AR	OP8035AR
Transom:	
OP8054AR	OP8053AR



Door H: Half Glass

Painted	Wood Grain
OP8014AR	OP8013AR
Sidelight:	
OP8032AR	OP8031AR
Transom:	
OP8049AR	OP8050AR

STAIN COLORS



SIDING & SHINGLES



TRUDEFINITION DURATION SHINGLES



Brownwood
OP12031AR



Teak
OP12043AR



Driftwood
OP12036AR



Onyx Black
OP12039AR



Estate Gray
OP12037AR



Colonial Slate
OP12045AR



Chateau Green
OP12032AR



Terra Cotta
OP12044AR



Sierra Gray
OP12042AR



Desert Rose
OP12057AR



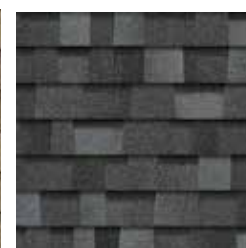
Midnight Plum
OP12058AR



Peppercorn
OP12059AR



Sand Castle
OP12060AR



Slatestone Gray
OP12061AR



GROUP A STANDARD SIDING 0.42mm



Gray
OP12012AR



White
OP12016AR



Mist
OP12013AR



Olive
OP12014AR



Clay
OP12010AR



Tan
OP12015AR



Flint
OP12011AR

STYLES



Siding groups A-D come in traditional lap.



Siding- Vinyl shingle in Gray, White, or Tan in place of:
Standard Siding - [OP12027AR](#)
Upgrade Siding - [OP12028AR](#)



Williamsburg Gray
OP12062AR

GROUP B SIDING 0.42mm



Briarwood
OP12017AR



Sagebrook
OP12019AR



Pewter
OP12018AR



Wedgewood
OP12020AR

GROUP C SIDING 0.44mm



Hampton Red
OP12023AR



Bayou Blue
OP12021AR



Shadow
OP12024AR



Brunswick
OP12022AR

CABINET STYLES



CABINET CONSTRUCTION

Construction: 3/4" Solid wood face frames, reinforced and aligned with dowels and adhesive.

Drawers: Front is 3/4" thick. Also have WhisperGlide 75# capacity glides. Deluxe drawer option with 5/8" dovetailed construction and full extension undermount glides with soft-action technology available.

Roll Out Trays: Base cabinet roll out trays optional

Overhead Cabinet Shelves: 3/4" thick fully adjustable overhead shelves

Hinges: 6-way adjustable self closing concealed hinges with limited life time warranty

Warranty: 10-25 year limited warranty depending on cabinets



We are America's Cabinetmaker.



STANDARD CABINET GROUP

Square recessed panel overhead
and base cabinets-Partial Overlay

Ranch/Cape [OP13002AR](#)
Two-Story [OP13000R](#)



**SPRING VALLEY
MAPLE DUSK**



**SPRING VALLEY
MAPLE PECAN**



**SPRING VALLEY
MAPLE BOARDWALK**

CABINET GROUP A

Square recessed panel overhead
and base cabinets-Partial Overlay

Ranch/Cape [OP13005AR](#)
Two-Story [OP13006R](#)



**SPRING VALLEY
HICKORY NATURAL**



**MARLIN MAPLE
BOARDWALK**



**MARLIN MAPLE
PECAN**



**MARLIN MAPLE
DUSK**



Note: Please see sample for true color

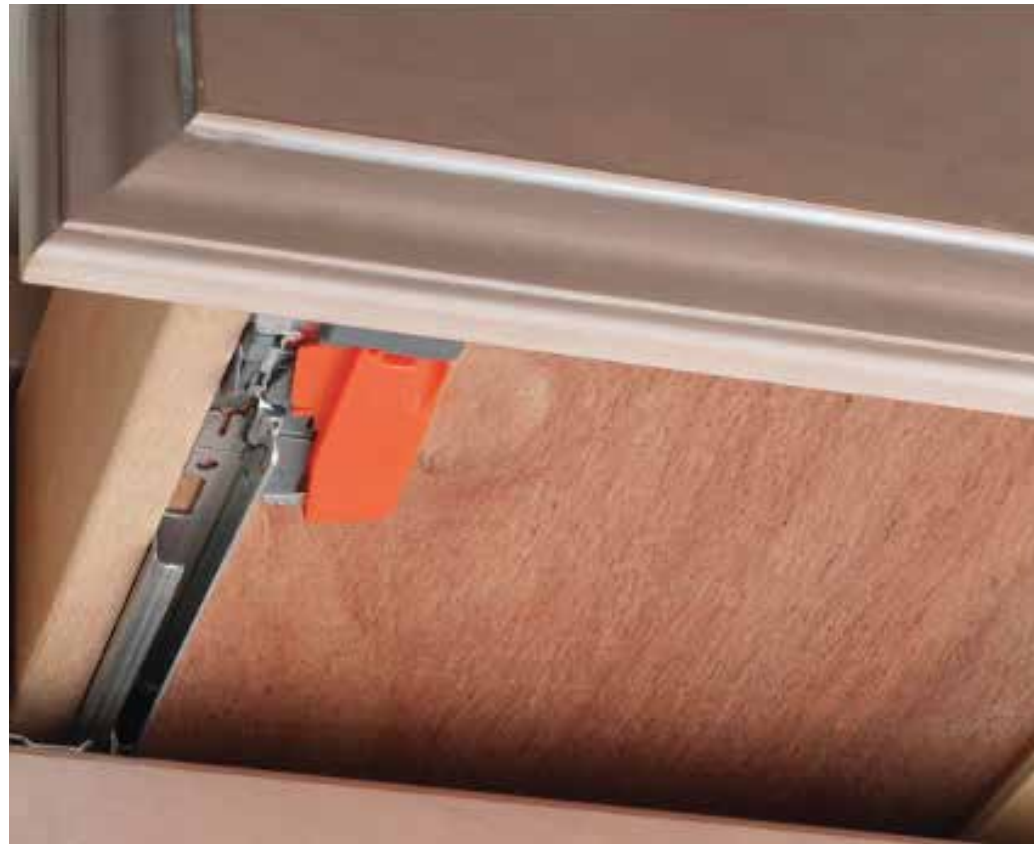
DELUXE DRAWER PACKAGE STANDARD

Available for classic line cabinets only in the Kitchen and Utility.

- Thicker core drawers- 5/8" thick drawer core provides a remarkably solid frame
- Dovetail drawer construction-durable and includes the SoftAction+ Tecnology on drawers only for a completely silent and effortless closing movement.
- Full extention drawers-allows the drawer to be completely opened.
- Plywood drawer bottom provides durable support to help resist sagging.



We are America's Cabinetmaker.



Note: Please see sample for true color



CABINET GROUP B

Ranch/Cape [OP13009AR](#) Two-Story [OP13010R](#)



**SPRING VALLEY
MAPLE COTTON**



**SPRING VALLEY
MAPLE GRAPHITE**



**SPRING VALLEY
MAPLE NIGHTFALL**



**MARLIN MAPLE
GRAPHITE**



**MARLIN MAPLE
NIGHTFALL**



**MARLIN MAPLE
COTTON**

CABINET GROUP C

Ranch/Cape **OP13019R** Two-Story **OP13014R**

Square recessed panel overhead and base cabinets- Full Overlay



**RALSTON MAPLE
BOARDWALK**



**RALSTON MAPLE
PECAN**



**RALSTON MAPLE
DUSK**



CABINET GROUP D

Ranch/Cape **OP13036R** Two-Story **OP13018R**

Square recessed panel overhead and base cabinets- Full Overlay



**RALSTON
MAPLE COTTON**



**RALSTON
MAPLE GRAPHITE**



**RALSTON
MAPLE NIGHTFALL**

Note: Please see sample for true color

SPECIALTY CAB/ RANGE HOOD



STAINLESS STEEL WALL MOUNT

Stainless steel wall mount with ceramic back splash vented outside.
36" opening with 30" range hood [OP14015R](#)

SPECIALTY CABINETS ADDITIONS

[OP14039AR](#) - Vanity storage over commode

[OP7011AR](#) - Under cabinet lighting

[OP14003AR](#) - 18" Additional bank of drawers

[OP13027AR](#) - Base cabinet roll out tray



MAKE UP VANITY

42in. Wide Makeup Vanity w/ Countertop ,
Includes 12in. 3DBOD *Vertical Cabinet not included
[OP14045AR](#)



Standard bathroom with trimmed mirror, pendant lights, and bank of drawers

OVERHEAD CABINET OPTIONS



24" overhead open bookshelf with organizer in place of overhead 2430 [OP14018AR](#)



Glass door on wall straight cabinet 15" or 18" square to match cabinets [OP14033AR](#)



Wall Wine Storage Cabinet [OP14043AR](#)

BASE CABINET OPTIONS



9" base pull out pantry in place of standard cabinet
OP14023AR



Double base waste basket top mount
OP14028AR



36" base pots and pans
2-Drawer in place of standard
OP14020AR



36" base pots and pans
3-Drawer in place of standard
OP14019AR



Tilt out sink tray-only available on standard double bowl sink
OP14036AR



36" Pantry with swing out racks in place of 18"
OP14000AR



Double pantry surround refrigerator
OP14029AR



Universal wall oven unit in place of base and overhead **OP14038AR**



Enclosed refrigerator 36 x 72/stacked washer/dryer.
30/78 opening with 24" deep overhead

OP14030AR



36in wide Bench and overhead
in UTL with countertop

OP14044AR



Oven Cabinet Additional **OP14037AR**

Oven Cabinet in place of base and overhead **OP14038AR**

33"x90" w/30" Overhead Cabinets

33"x96" w/42" Overhead Cabinets

Appliance Opening Width 27"-31"

Opening Height 23 3/4"-47 1/4"

with one drawers below.

CERAMIC TILE



TUB & SHOWER TILE COLORS

See Plumbing Options for showers available in ceramic.



IVORY 12X24



CALACATTA 12X24



HEATHER GRAY 12X24



MIDNIGHT 12X24

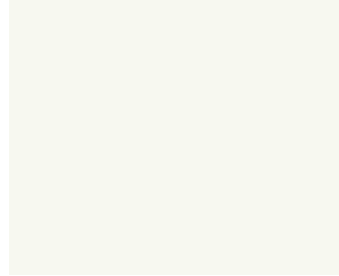


CLAY 12X24

GROUT COLORS



SILVERADO



BRIGHT WHITE



LIGHT BRONZE



RAVEN

KITCHEN

Installed in a brick pattern.

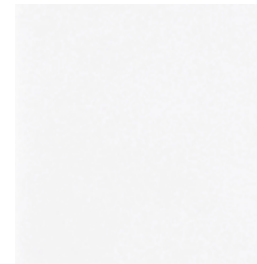
OP14017R HOOD - Stainless steel wall mount
w/4x16 Subway Tile backsplash.

Choose Color/Grout/Schluter. Vented EXT.

OP14012R CERAMIC - 4x16 Subway Tile backsplash.
Choose Color/Grout/Schluter.



NAVY MATTE 4X16



ARCTIC GLOSSY 4X16



SIDEWALK GLOSSY 4X16

COUNTERTOPS



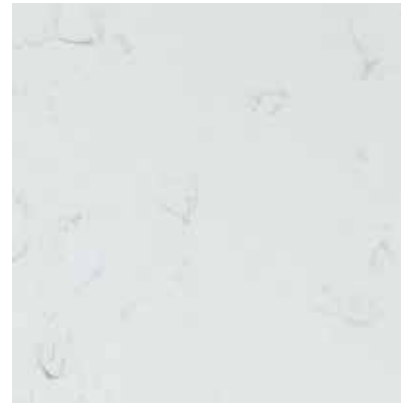
TOP QUARTZ COLORS



CALACATTA LAZA



ICED GRAY



CARARRA MORRO



SOAPSTONE METROPOLIS

ADVANTAGES TO UPGRADING TO QUARTZ

We offer two countertop materials. Laminate countertops are a wood-based counter with a laminated print for a surface. A laminate countertop offers great affordability and has many styles to choose from. We choose to build our homes with a post form, rolled edge laminate top so that there are no seams from the front of your countertop all the way to the backsplash, which prevents damage from water penetrating seams or from physical damage to the top. If you choose to upgrade to a solid surface countertop, we move straight to the hardest top in the industry. Quartz is a manufactured product that has grown in popularity because of its durability, lack of need for major time in upkeep, and beautiful, eye-catching designs.



STANDARD COUNTERTOP COLORS



Pebble Piazza
(5009-60)
OP15008AR



Natural Canvas
(7022-58)
OP15006AR



Milano Quartz
(4726-60)
OP15005AR



Oiled Soapstone
(4882-38)
OP15007AR



White Juparana
(4931-38)
OP15011AR



White Cascade
(5003-38)
OP15010AR



Calacatta Oro
(4981-38)
OP15003AR



White Carrara
(4924-38)
OP15009AR



Butterum Granite
(7732-58)
OP15002AR



Jamocha Granite
(7734-58)
OP15004AR

UPGRADE COUNTERTOP COLORS



White Bardiglio
(9306-94)
OP5041AR



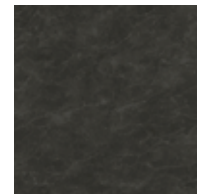
Argento Romano
(6697-46)
OP15038AR



Perlato Granite
(3522-46)
OP5042AR



Café di Pesco
(4952K-22)
OP5043AR



Lisola
(5043K-15)
OP5044AR



Lakeshore
(5046K-15)
OP50458AR



Benjamin Grey
(1887K-22)
OP5046AR



Winter Carnival
(1874-52)
OP0547AR



Marmo Bianco
(1885K-07)
OP15047AR



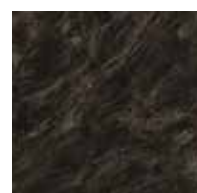
Drama Marble
(5010K-07)
OP15048AR



Italian White di Pesco
(4954K-22)
OP15044AR



Typhoon Ice
(4952K-22)
OP15049AR



Sombra
(5028K-07)
OP15050AR



Calacatta Marble
(3460-46)
OP15036AR



Dolce Vita
(3420-46)
OP15042AR



Spring Carnival
(1876K-52)
OP5048AR



Glacier Quartzite
(5025K-22)
OP15046AR



Fantasy Marble
(9301-34)
OP15043AR

QUARTZ COUNTERTOP-GROUP A



Frost White
OP15065R



Cosentino Gris Expo
OP15071R



Iced Gray
OP15064R

QUARTZ COUNTERTOP-GROUP B



Manhattan Gray
OP15079R



Fossil Gray
OP15075R



Cararra Mist
OP15077R



Cararra Morro
OP15074R

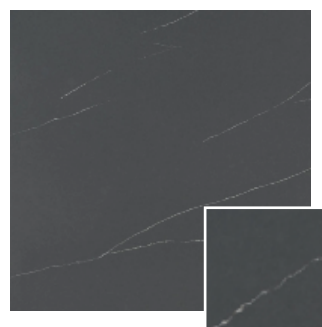


Cararra Miska
OP15076R

QUARTZ COUNTERTOP-GROUP C



Calacatta Laza
OP15087R



Soapstone Metropolis
OP15083R



Calacatta MSI Prado
OP15083R



Calacatta MSI Karmelo
OP15083R

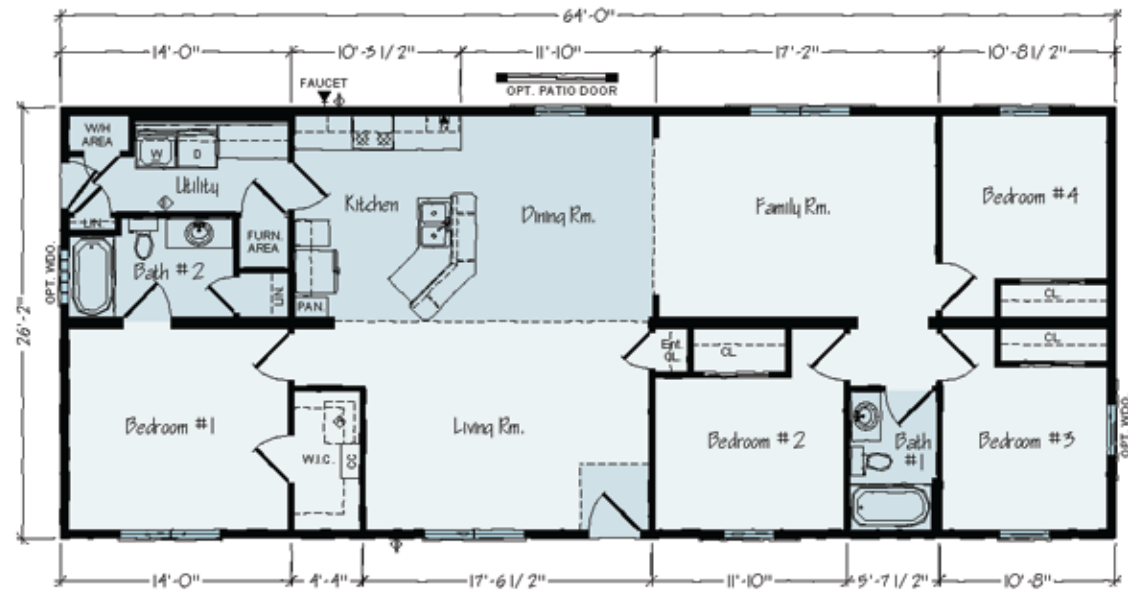
COUNTERTOP THICKNESS

All quartz groups will be 3cm thick in the Kitchen and 2cm thick in the bathrooms.

DESKS & ISLANDS



Kitchen islands have become a real icon of the modern kitchen. Our kitchen islands come in a variety of shapes and sizes, and have the ability to be interchanged with a similar sized island to the one on the original plan.



STANDARD DESK



Desk A Kitchen Unit
OP16000AR



Desk B 60" Hall Unit
OP16001AR



Desk C 57"x57" Corner Unit
OP16002AR



Desk D 81" Office Unit
OP16003AR



Desk E 135" Office Unit
OP16004AR

ISLANDS



Island A
4'3"x2'3" Island with 1"
overhang all sides and
receptacle on one end.
OP16005AR

Island B
4'3"x3' Island with 1"
overhang on front and
sides and 11" overhang on
backside and receptacle
on one end.
OP16006AR



Island J
6'9"x3'6 1/2" Island with
1" overhang on front and
one side, raised bar with
13" overhang on back with
leg supports, 24"x42" shelf
section on side, receptacle
on one end.
OP16011AR



Island I
6'4"x3'3" Island with over-
hang, kneehole on back-
side, glass doors square on
one end and solid doors
on opposite end, and
receptacle on backside
of solid door cabinet.

OP16010AR



Island E
Angled Island with 1" overhang on front
and sides, 11" overhang on backside with
receptacle on one end **OP16007AR**



Island F
Angled Island with 1"
overhang on front and
sides, raised bar with 13"
overhang on backside,
receptacle on one end.

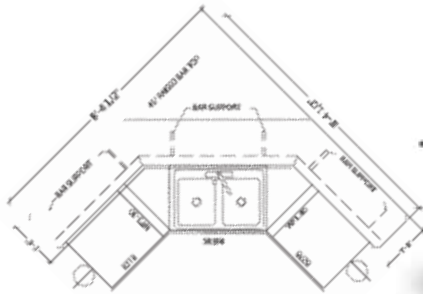
OP16008AR
Stone Backing **OP16009AR**





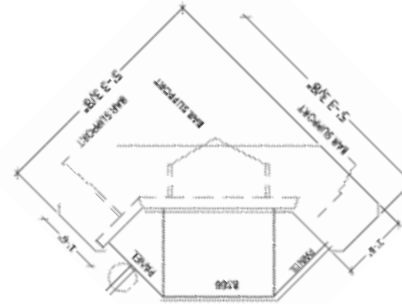
Island K

Double angle island with 1" overhang on front and sides, raised bar with 13" overhang on backside, receptacle on both ends. (Shown with sink, will accommodate dishwasher)
OP16012AR
OP16013AR (stone backing)



Island L

Double angle island with 1" overhang on front and sides, raised bar with 13" overhang on back with supports, receptacle on one end.
OP16014AR



Island N

4'6"x3'1" Island with 11" overhang on back, full leg supports each end and receptacle on one end.
OP16015AR



Island S

6'5"x3'5" Island with overhang on back, (2) pots and pans drawers, and (2) straight legs. Receptacle on one end
OP16019AR



Island T

9'4"x4'2"

(2) large pots and pans drawers, and (3) straight legs

OP16020AR**Island Q**

8'4"x3'5" island with overhang on back, bookshelf on side.

OP16017AR**Island P**

6'4"x3'5" island with overhang on back, (2) 4 bank of drawers. 39" cabinet on side.

OP16016AR**Island R**

5'4"x3'5" island with overhang on back, 2 drawer pots and pans. 39" cabinet on side.

OP16018AR



INTERIOR DOORS & TRIM

TRIM PACKAGES

OP17017AR-STANDARD PACKAGE - Any door style in hollow core only, Trim Style 1, white only

OP17025R-PACKAGE A - Any door style in solid core, Trim Style 1, white or coffee

OP17026R-PACKAGE B - Any door style in solid core, Trim Style 2, white only, mitered on doors and windows.

OP17027R-PACKAGE C - Alder 3 Panel Door; Flat Sappy Cherry 3" casing, 4" base trim, butted installation.

TRIM STYLE



6 PANEL DOOR



3 PANEL DOOR



2 PANEL DOOR

STYLE 1 (STANDARD & PACKAGE A)



CASING



BASEBOARD

TRIM COLOR

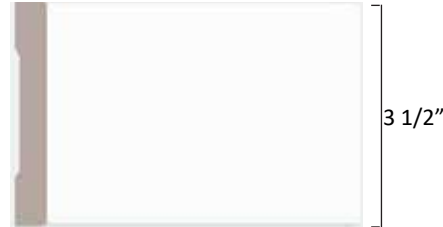


WHITE



COFFEE

STYLE 2 (PACKAGE B)



CASING



BASEBOARD

PACKAGE C



ALDER DOOR



CASING
3"



SAPPY CHERRY TRIM



BASEBOARD
4"

BARN DOOR HARDWARE



Brushed Nickel or Matte Black barn door hardware on door to match

OP17001AR

Optional Pocket Doors (without privacy lockset)

OP17013AR

Optional Pocket Doors (with privacy lockset)

OP17014AR



FLOORING

ADVANTAGE SERIES CARPET

Edgewater Carpet

- Nylon fibers and Polypropylene backing
- CRI Certification
- Recyclable
- Resilient
- 15 oz. Carpet



00720 Coffee Bean



00700 Camelback



0000502 Charcoal



00500 Silversmith



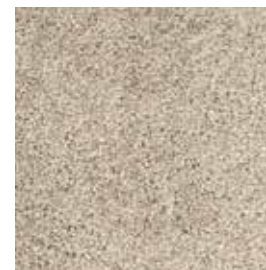
00126 Canyon Cove



00125 Pottery



00121 Fossil



00110 Sunrise

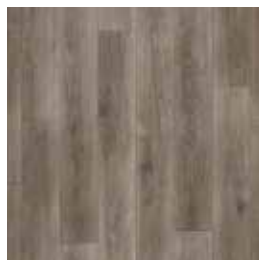
STANDARD VINYL FLOORING



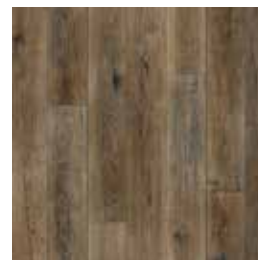
Beachside Sundance
LX355 **OP18070AR**



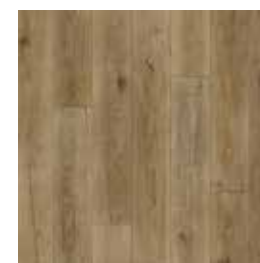
European Oak Aspen
LX327 **OP18027AR**



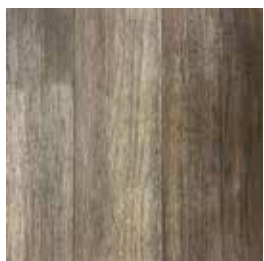
European Oak Thunder
LX325 **OP18067AR**



Aged European Oak Farmstead
LX310 **OP18019AR**



Aged European Oak Natural
LX311 **OP18068AR**



Artisan Dusky Acorn
LX350 **OP18069AR**



Barn Wood Vintage White
LX275 **OP18022AR**



Barn Wood Greige
LX277 **OP18021AR**



West Port Harbor Light
LX330 **OP18094AR**



ROCHESTER SERIES "TRUE SPIRIT" CARPET 40 OZ.



511 City Space
OP18029AR



502 Lady Liberty
OP18030AR



507 Concrete
OP18031AR

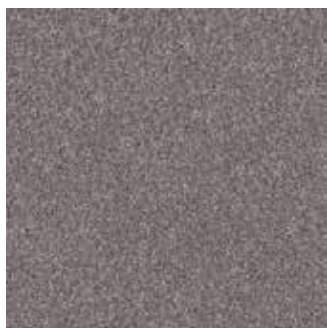


705 Cottage
OP18036AR

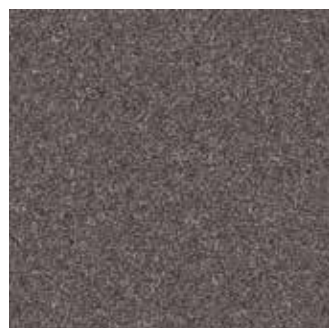


701 Truffle
OP18037AR

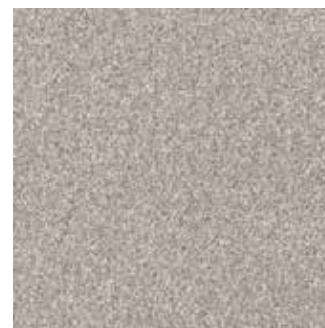
ROCHESTER SERIES "YES YOU CAN" CARPET 60 OZ.



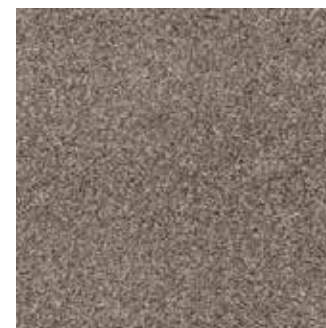
00509 Vintage
OP18038AR



00502 Shadow
OP18039AR



00107 Frozen
OP18040AR



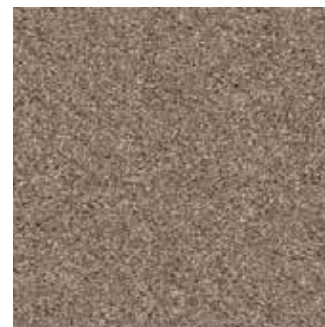
00116 Warm Light
OP18041AR



00705 Mission Ridge
OP18043AR



00109 Natural
OP18042AR



00113 Cameo
OP18064AR



00708 Urban Rustic
OP18065AR



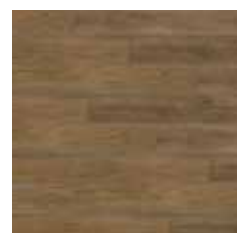
Offering durable, high-definition designs with a rigid core for stability, a patented interlocking system for easy installation, and 100% waterproof protection, all backed by a limited warranty.



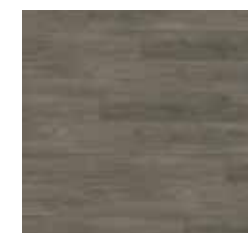
Breckenridge GEN-812
OP18069R



Roan GEN-811
OP18073R



Brook GEN-810
OP18084R



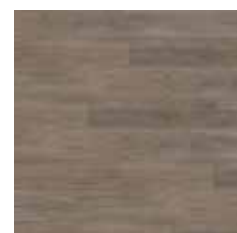
Avon GEN-809
OP18072R



Sedona GEN-817
OP18066R



Vail GEN-813
OP18068R



Rocky GEN-808
OP18083R

INTERIOR FINISH



COLUMNS



Grand Archway 5' arch columns with a smooth finish, wood capped 1/4" walls . Columns are no longer fluted. **OP19001AR**

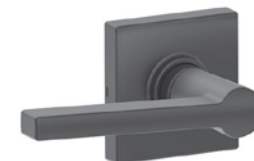
INTERIOR FINISHES



Closet Organizer Component Additional.
White Only **OP19014AR**
*standard in Master Walk-in Closet



Passage Door Lever
-Brushed Nickel



Passage Door Lever
-Matte Black



DRYWALL OPTIONS

Drywall arch
4' **OP19008AR**
5' **OP19009AR**

Large opening drywall arch
OP19010AR



Tray Ceiling with 4 recessed can lights
OP19011AR



Coffered Ceiling with white crown moulding
OP19002AR



Privacy Door Lever
-Brushed Nickel



Privacy Door Lever
-Matte Black



For nearly 50 years, Rochester Homes, Inc. has built homes and relationships that stand the test of time. We combine the art of homebuilding with the efficiency of a production process in a manufacturing facility. In a culture dominated by corporate ownership, we stand apart as a third-generation, family-owned and operated company. Rest assured, our family leadership team is actively engaged in day-to-day activities with our dedicated team, product, contractors, and customers.

**Scan the QR code for a
digital version of this guide.**



1345 N. Lucas Street | Rochester, Indiana 46975
Toll Free: 800.860.4554 | Local: 574.223.4321 | Fax: 574.223.1655
www.rochesterhomesinc.com