



EASY STREET

WHERE THE LIVING IS EASY.



MODULAR AND MULTI SECTION HOMES



STANDARD FEATURES

MODULAR AND MULTI SECTION HOMES

INTERIOR

SHAW 25 OZ CARPET WITH 5# REBOND PAD TACK STRIP
9' SIDEWALLS
STIPPLE CEILING FINISH
FINISHED CEILING JOINTS
1/2" DRYWALL THROUGHOUT
BUILDER GRADE PRIMER THROUGHOUT
"CLOSET MAID" VENTILATED WIRE SHELVING IN CLOSETS
LED RECESSED CAN LIGHTS THROUGHOUT
PAINTED MDF 3" DOOR, 2 1/4" WINDOW CASING AND 5" BASE TRIM
2-PANEL WHITE INTERIOR DOORS
TRANSOMS OVER DOORSIDE WINDOWS
TRAY CEILING - PRIMARY BEDROOM
DRAPES - LIVING ROOM

KITCHEN

KITCHEN CABINETS TO CEILING - VBP
SOLID SURFACE COUNTERTOPS
HARDWOOD CABINET DOORS & STILES
CONCEALED EUROPEAN STYLE COUNTER-SUNK HINGES
3/4" ADJUSTABLE SHELVES IN OVERHEAD CABINETS
27" X 10" STAINLESS STEEL KITCHEN SINK
W/BLACK GOOSENECK FAUCET
SAMSUNG APPLIANCES
30" DLX ELECTRIC RANGE - STAINLESS STEEL
26 CU FT SIDE BY SIDE REFRIGERATOR
W/ICEMAKER - STAINLESS STEEL
DISHWASHER - STAINLESS STEEL
UPGRADED RANGE HOOD
RECESSED LED CAN LIGHTS IN KITCHEN
BANK OF DRAWERS
DRAWER OVER DOOR CONSTRUCTION
CAN LIGHT IN DINING ROOM - VBP
PENDENTS OVER ISLAND
SOFT CLOSE KITCHEN DRAWERS & DOORS
BLACK PANTRY DOOR

INSULATION

ZONE III INSULATION PACKAGE
- R-38 BLOWN CEILING INSULATION
W/VAPOR BARRIER
- R-21 FIBERGLASS INSULATION IN WALLS
- R-27 FIBERGLASS INSULATION IN FLOORS
- FIBERGLASS HEAT DUCTS W/IN-FLOOR CROSSOVER

BATHS

60" CERAMIC SHOWER & FREE STANDING TUB
IN PRIMARY BATH
60" 1PC FIBERGLASS TUB/SHOWER - BATH 2
BANK OF DRAWERS IN PRIMARY BATH & BATH 2
HIGH PRESSURE LAMINATED COUNTERTOPS & BACKSPLASH
W/MICROBAN ANTIMICROBIAL TECHNOLOGY
PORCELAIN COMMODES
SQUARE PORCELAIN LAVS
POWER EXHAUST FANS
LIGHTED VANITY MIRRORS - PRIMARY BATH
OVER MIRROR VANITY LIGHTS - BATH 2
36" TALL VANITIES IN BOTH BATHS
FURNITURE STYLE VANITY - PRIMARY BATH
PFISTER METAL FAUCETS - BLACK

EXTERIOR

5/12 ROOF PITCH
GAF ARCHITECTURAL FIBERGLASS SHINGLES
METAL FACIA
VINYL VENTED SOFFIT
36" CRAFTSMAN 3-LIGHT FRONT DOOR
W/DEADBOLT & THUMB LATCH HANDLE
36" PRAIRIE REAR DOOR W/DEADBOLT
EXTERIOR LIGHT AT FRONT & REAR DOOR
4 1/2" DUTCH LAP VINYL SIDING
(2) EXTERIOR GFI RECEPTACLE & FAUCETS
72" LOW E VINYL WINDOWS W/3 OVER CLEAR GRIDS
VINYL WINDOW SURROUNDS (DOORSIDE)
RECESSED ENTRY
ARGON GAS WINDOWS

UTILITIES

200 AMP SERVICE PANEL
ELECTRIC CARRIER FURNACE
ECOBEE 5 WIFI THERMOSTAT
40 GALLON HYBRID HEAT PUMP WATER HEATER
WATER HEATER PAN WITH EXTERIOR DRAIN
PEX PLUMBING
WIRE & PLUMB FOR WASHER
WIRE & VENT FOR DRYER
RECESSED WHOLE HOUSE SHUT OFF
WATER SHUT OFFS THROUGHOUT
GFCI PROTECTED RECEPTACLES IN KITCHEN AND BATHS
FURNACE & WATER HEATER CLOSE-OFF DR
SMOKE DETECTOR
3 WAY SWITCH - HALL

CONSTRUCTION

STEEL I-BEAM FRAME W/DETACHABLE HITCH
2" X 8" FLOOR JOISTS - 16" O.C.
T&G OSB FLOOR DECKING GLUED & FASTENED
2" X 6" EXTERIOR WALLS - 16" O.C.
30LB. ROOF LOAD
RIDGE VENT ROOF VENTING
LINKED SMOKE DETECTORS
W/BATTERY BACK-UP IN MAIN LIVING & ALL BEDROOMS
7/16" OSB EXTERIOR SHEATHING W/WINDWRAP
KWIKSET INTERIOR & EXTERIOR DOOR KNOBS
W/MICROBAN ANTIMICROBIAL TECHNOLOGY
WHOLE HOUSE VENTILATION FAN

MODULAR SPECIFICATIONS

2" X 10" FLOOR JOISTS 16" O.C.
R-21 WALL INSULATION
R-49 ROOF INSULATION
2" X 4" INTERIOR WALLS
2" X 4" MATE LINE WALL
40/40 200 AMP SERVICE PANEL
METAL CROSS BRIDGING
SMOKE/CARBON MONOXIDE DETECTOR
WISCONSIN & MINNESOTA HAS NO PLUMBING OR FURNACE



TABLE OF CONTENTS

NAME	MODEL	SIZE	SQ. FT.	BEDROOMS	BATHS	PAGE
Utopia	5230-MS050	52x30	1560	3	2	4
Good Life	5630-MS051	56x30	1680	3	2	5
The Dream	6030-MS052	60x30	1800	3	2	6
Paradise	6430-MS053	64x30	1920	3	2	7
Highland	6430-MS060	64x30	1920	3	2.5	8
View	6630-MS055	66x30	1821	3	2	9

MODEL NUMBER:

5230-MS050

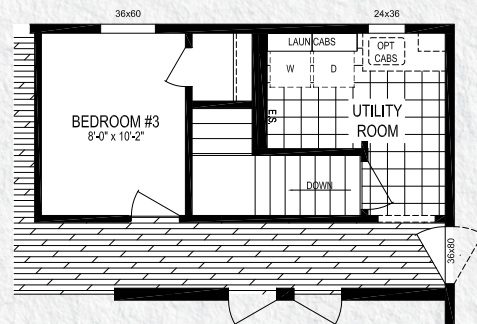
52 x 30 | 1560 Sq. Ft. 3 Bed | 2 Bath

UTOPIA



- RECESSED ENTRY ONLY AVAILABLE ON HUD HOMES

BASEMENT STAIR OPT.
(OMITS STD. FURNACE & WH)

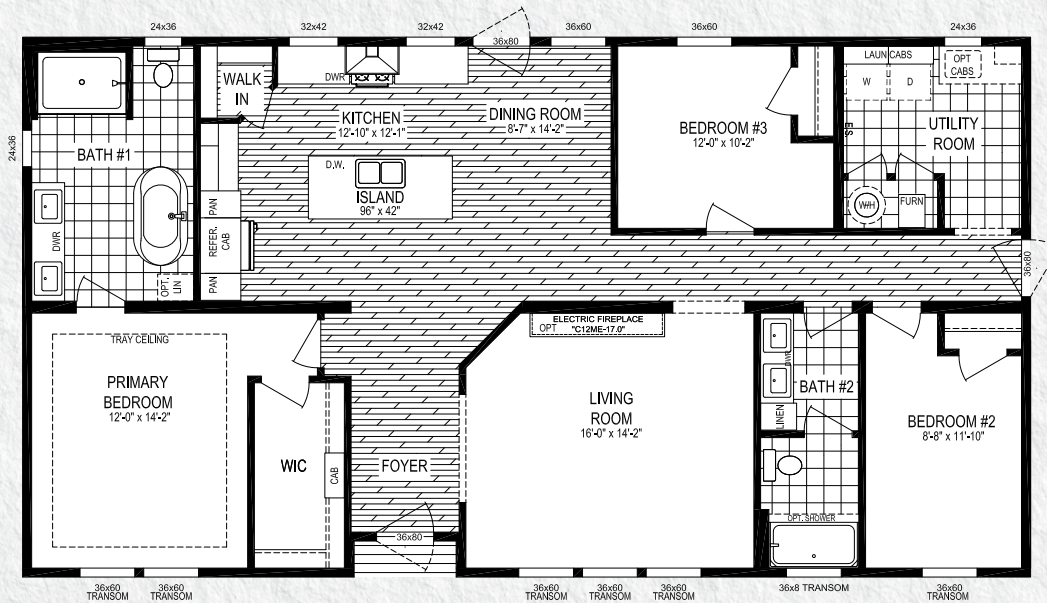


MODEL NUMBER:

5630-MS051

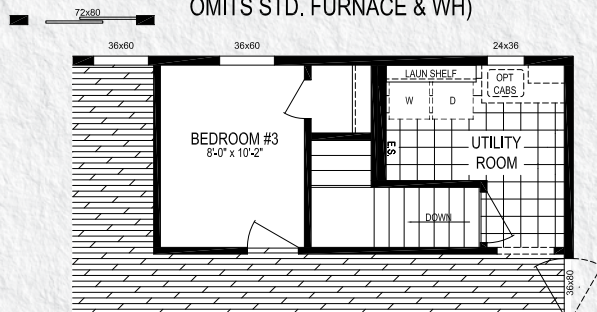
56 x 30 | 1680 Sq. Ft. 3 Bed | 2 Bath

GOOD LIFE



- RECESSED ENTRY ONLY AVAILABLE ON HUD HOMES

(BASEMENT STAIR OPT.
OMITS STD. FURNACE & WH)



MODEL NUMBER:

6030-MS052

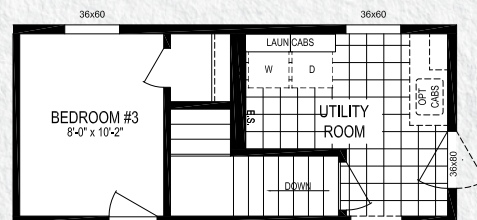
60 x 30 | 1800 Sq. Ft. 3 Bed | 2 Bath

THE DREAM



- RECESSED ENTRY ONLY AVAILABLE ON HUD HOMES

BASEMENT STAIR OPT.
(OMITS STD. FURNACE & WH)

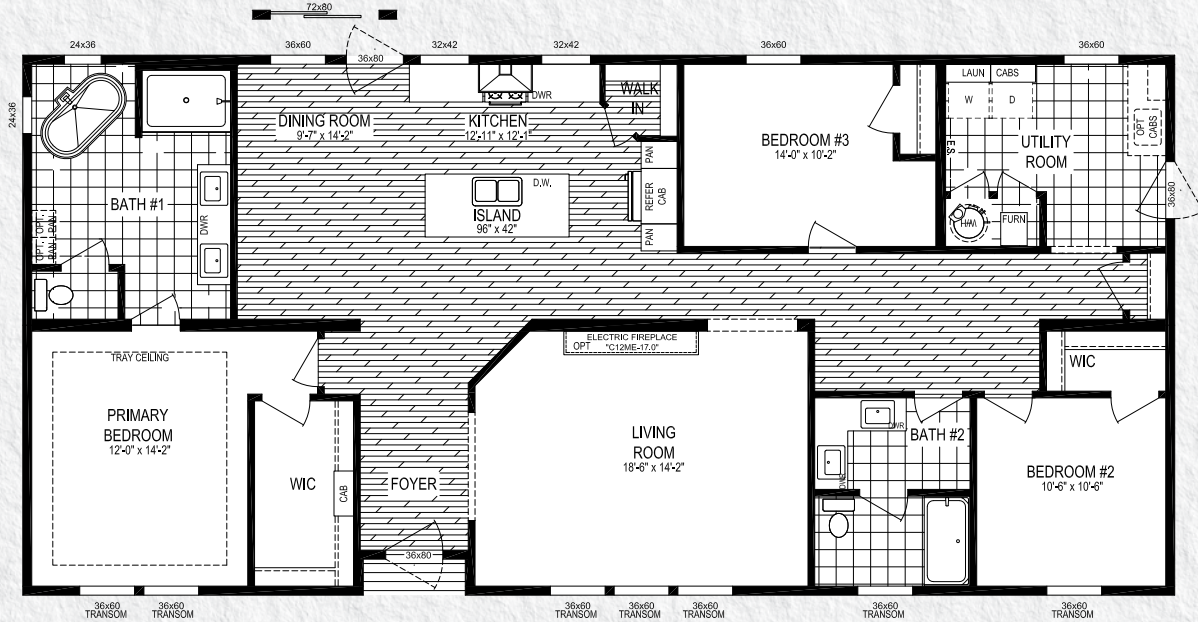


MODEL NUMBER:

6430-MS053

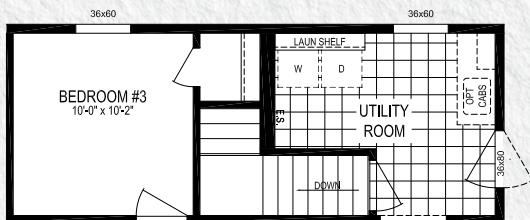
64 x 30 | 1920 Sq. Ft. 3 Bed | 2 Bath

PARADISE



- RECESSED ENTRY ONLY AVAILABLE ON HUD HOMES

BASEMENT STAIR OPT.
(OMITS STD. FURNACE & WH)



MODEL NUMBER:

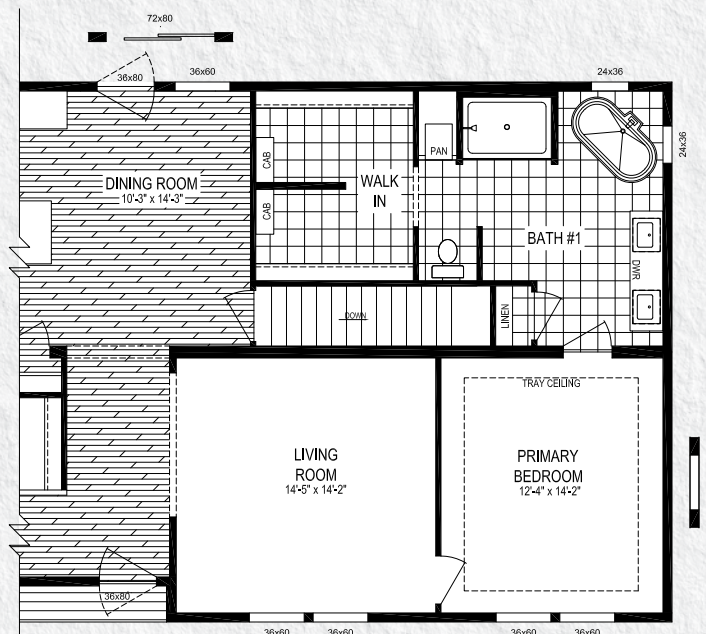
6430-MS060

64 x 30 | 1920 Sq. Ft. 3 Bed | 2.5 Bath

HIGHLAND



- RECESSED ENTRY ONLY AVAILABLE ON HUD HOMES



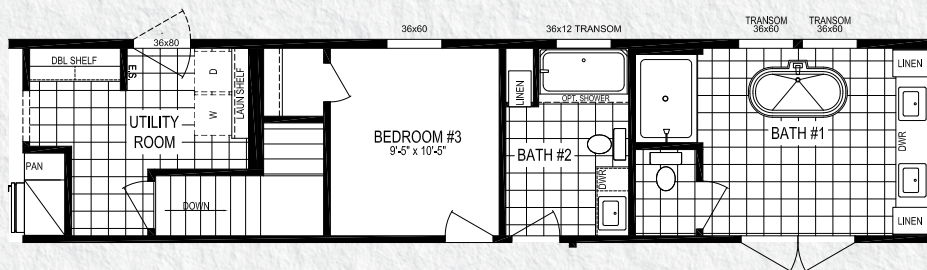
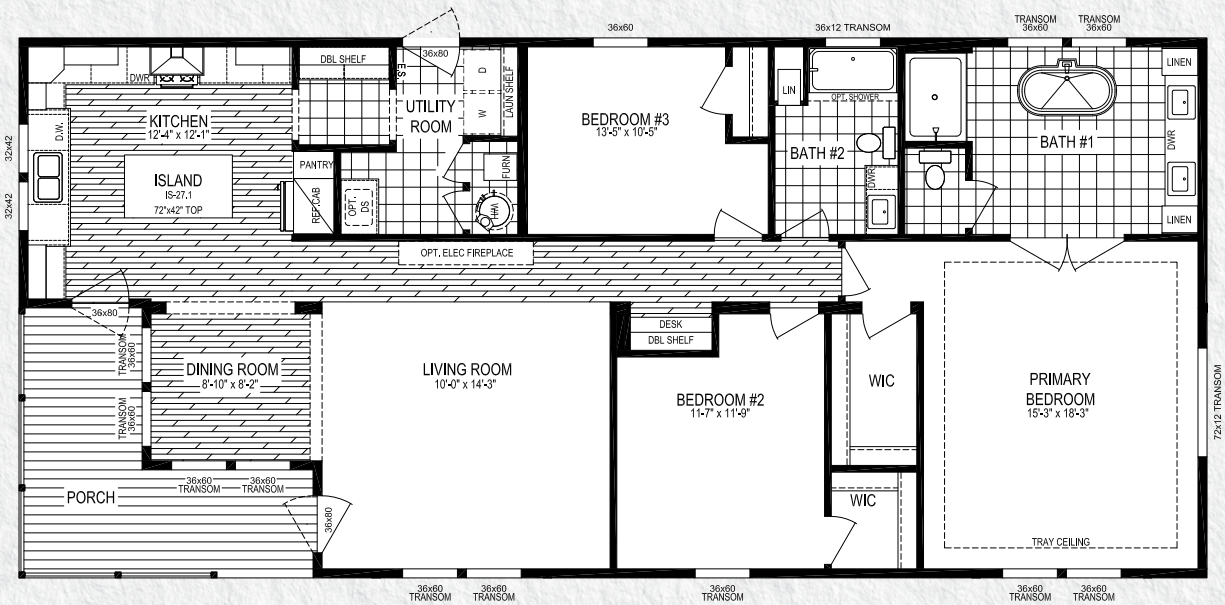
Stairwell Option

MODEL NUMBER:

6630-MS055

66 x 30 | 1821 Sq. Ft. 3 Bed | 2 Bath

VIEW



BASEMENT STAIR OPT.
(OMITS STD. FURNACE & WH)



DÉCOR OPTIONS



HIGHLIFE KITCHEN PACKAGE

- Euro Range Hood
- White Ceramic Backsplash
- Kitchen Counter Top — Pietra Noir
- Kitchen Island Counter Top - White Quartz
- Flooring - Highlight Oak Laminate
Cape Cod - Daytona Sand



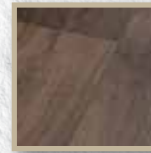
WHITE CERAMIC



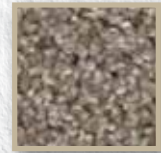
PIETRA NOIR



WHITE
QUARTZ



HIGHLIGHT OAK



CAPE COD -
DAYTONA SAND

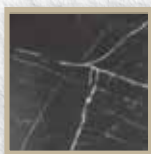


HEARTHSTONE KITCHEN PACKAGE

- Hearthstone Range Hood
- Brickstone Red Ceramic Backsplash
- Kitchen Counter Top — Pietra Noir
- Kitchen Island Counter Top - White Quartz
- Flooring - Accent Pine Laminate
Cape Cod - Daytona Sand



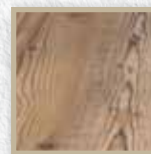
BRICKSTONE RED



PIETRA NOIR



WHITE
QUARTZ



ACCENT PINE



CAPE COD -
DAYTONA SAND

EXTERIORS

SHADOW SIDING



CYPRESS SIDING



WHITE SIDING

w/Black Fascia, Soffit, Exterior
Doors & Black Vinyl Window
Surrounds & Bronze Windows

* For The View Only





WHERE THE LIVING IS EASY.



Your Local Home Builder

MODULAR AND MULTI SECTION HOMES 2025



437 N. Main Street
Middlebury, IN 46540
574.825.7500
574.825.7569 fax

www.claytonmiddlebury.com

Because our company has a continuous product update process, specifications, floor plan lay-out and dimensions shown on this literature are subject to change without notice or obligations. Construction and design specifications as well as features presented conceptual, therefore should not be used as actual construction data and may not be offered in all series or models. Our Retailer will provide accurate, up-to-date information on available options and specifications for your home. 2/25

