

Opening Doors

TO A
BETTER LIFE

PULSE
COLLECTION

Clayton
wakarusa

2024

eBuilt

Table of Contents

Standard Features

3 Standard Features

Single Section Models

- 4 4814-4790 | 2 beds | 1 bath | 656 sq. ft. | 14x48
- 5 5614-4701 | 2 beds | 2 baths | 738 sq. ft. | 14x56
- 6 6014-4701 | 2 beds | 2 baths | 790 sq. ft. | 14x60
- 7 6614-4701 | 3 beds | 2 baths | 869 sq. ft. | 14x66
- 8 7014-4701 | 3 beds | 2 baths | 922 sq. ft. | 14x70
- 9 7614-4701 | 3 beds | 2 baths | 1,001 sq. ft. | 14x76
- 10 4816-4790 | 2 beds | 1 bath | 720 sq. ft. | 16x48
- 11 5216-4790 | 2 beds | 1 bath | 780 sq. ft. | 16x52
- 12 6016-4711 | 2 beds | 2 baths | 900 sq. ft. | 16x60
- 13 6016-4779 | 2 beds | 2 baths | 900 sq. ft. | 16x60
- 14 6016-4791 | 2 beds | 2 baths | 900 sq. ft. | 16x60
- 15 6616-4711 | 3 beds | 2 baths | 990 sq. ft. | 16x66
- 16 6616-4772P | 2 beds | 2 baths | 910 sq. ft. | 16x66
- 17 6616-4779 | 3 beds | 2 baths | 990 sq. ft. | 16x66
- 18 6616-4791 | 3 beds | 2 baths | 990 sq. ft. | 16x66
- 19 7616-4700 | 3 beds | 2 baths | 1,140 sq. ft. | 16x76
- 20 7616-4710 | 3 beds | 2 baths | 1,140 sq. ft. | 16x76
- 21 7616-4714 | 3 beds | 2 baths | 1,140 sq. ft. | 16x76
- 22 7616-4773P | 3 beds | 2 baths | 1,060 sq. ft. | 16x76
- 23 7616-4779 | 3 beds | 2 baths | 1,140 sq. ft. | 16x76
- 24 7616-4791 | 3 beds | 2 baths | 1,140 sq. ft. | 16x76

Multi-Section Models

- 25 4424-E733 | 3 beds | 2 baths | 977 sq. ft. | 24x44
- 26 4824-E734 | 3 beds | 2 baths | 1,088 sq. ft. | 24x48
- 27 5224-E735 | 3 beds | 2 baths | 1,179 sq. ft. | 24x52
- 28 5624-E734P | 3 beds | 2 baths | 1,118 sq. ft. | 24x56
- 29 5624-E744 | 3 beds | 2 baths | 1,270 sq. ft. | 24x56
- 30 4028-E751 | 3 beds | 2 baths | 1,080 sq. ft. | 28x40
- 31 4428-E781 | 3 beds | 2 baths | 1,188 sq. ft. | 28x44
- 32 4828-E746 | 3 beds | 2 baths | 1,296 sq. ft. | 28x48
- 33 4828-E782 | 3 beds | 2 baths | 1,296 sq. ft. | 28x48
- 34 4828-E783 | 3 beds | 2 baths | 1,296 sq. ft. | 28x48
- 35 5228-E774P | 3 beds | 2 baths | 1,332 sq. ft. | 28x52
- 36 5228-E785 | 3 beds | 2 baths | 1,404 sq. ft. | 28x52
- 37 5628-E774P | 3 beds | 2 baths | 1,440 sq. ft. | 28x56
- 38 5628-E845P | 3 beds | 2 baths | 1,332 sq. ft. | 28x56
- 39 5628-E786 | 3 beds | 2 baths | 1,512 sq. ft. | 28x56
- 40 5628-E787 | 3 beds | 2 baths | 1,512 sq. ft. | 28x56
- 41 6028-E788 | 4 beds | 2 baths | 1,620 sq. ft. | 28x60
- 42 6428-E792 | 3 beds | 2.5 baths | 1,728 sq. ft. | 28x64
- 43 7228-E789 | 3 beds | 2 baths | 1,944 sq. ft. | 28x72

Optional Features

- 44 Optional Hitch End Elevations – Single Sections
- 45 Optional Hitch End Elevations – Sectionals
- 46 Optional Dormers
- 47 Elevation and Color Options – Single Sections
- 48 Elevation and Color Options – Sectionals

Standard Features

eBuilt™ ENERGY STAR® Ready / DOE Certified Zero Energy Ready Home

INTERIOR

- **Decorative Rods w/side Panels – Main Living Areas**
- 2" Blinds Throughout
- **Shaw® 25 oz. "New Wave" Carpet w/ 5# Rebond Pad**
- **Lux Congoleum No Wax Vinyl Flooring**
- 8' Flat Ceilings Throughout
- Stipple Ceiling Finish
- Wall Coverings 3/8" Wall Board
- Ventilated Wire Shelving in Closets
- **LED Recessed Can Lights T/O**
- **LED Bulbs - Bath Vanity Lights**
- **(2) Pendant Lights over Islands (where available)**
- **ENERGY STAR® Ceiling Fan with w/LED Light – Living Room**
- 2" DuraCraft® Flat Ceiling Cove, Door & Window Casing T/O
- **32" 2-Panel White Interior Doors with 3 Mortised Hinges – Bedrooms & Baths**
- High Pressure Laminated Countertops – Throughout
- 4" Laminate Backsplash Throughout
- Foyer Linoleum
- Door Chime
- **Pfister® Water Saving Metal Faucets – Kit/Baths**
- Kitchen Island Standard

KITCHEN

- **42" Flat Panel G2 Kendall DuraCraft® O/H Cabinets**
- Center Shelf Base Cabinets
- Refrigerator Overhead Cabinet
- MDF Stiles
- GFCI Receptacles
- Metal Drawer Guides
- Bank of Drawers (4)
- Cabinet Doorknobs & Drawer Pulls
- Concealed Cabinet Door Hinges
- 8" Stainless Steel Double Bowl Kitchen Sink
- **Frigidaire® Appliances**
 - 30" Free-Standing Electric Range – Black
 - **ENERGY STAR® 18 CF Frost Free Refrigerator – Black**
- Window Over Kitchen Sink (where available)

BATHS

- 60" 1pc. Fiberglass Tub/Shower – Both Baths
- Porcelain Square Sinks – Both Baths
- **Elongated Commodes – Both Baths**
- **ENERGY STAR® Power Vent Bath Fan**
- GFCI Receptacles
- **Towel Bar & Tissue Holders – Both Baths**
- **Stile Framed Mirrors – Both Baths**
- **3-Bulb Strip Bar Vanity Lights – Both Baths**
- Double Bowl Lavs in Bath 1 (where available)

INSULATION

- **Zone III Insulation/Zero Ready Insulation Pkg**
 - **R-38 Blown Ceiling Insulation with Vapor Barrier**
 - **R-21 Fiberglass Insulation in Walls**
 - **R-33 Fiberglass Insulation in Floors – Between I-Beams**
 - **R-22 Fiberglass Insulation in Floors – Outside I-Beams**

EXTERIOR

- Nominal 3/12 Roof Pitch - 28'
- Nominal 4/12 Roof Pitch - 16'
- Nominal 5/12 Roof Pitch - 14'
- OSB Exterior Sheathing
- 25 Year Fiberglass Shingle
- Ice and Water Shield
- Aluminum Fascia w/Vented Soffit
- **36"x80" 6-Lite Craftsman Front Door with Storm & Deadbolt – Storm Door Shipped Loose**
- **36"x80" Residential Fiberglass Rear Door with Storm & Deadbolt – Storm Door Shipped Loose**
- Exterior Light at Front & Rear Doors
- Double 4.5" Dutch Lap Vinyl Siding
- **Raised Siding – Skirting Application**
- **(1) Exterior Faucet – Per Print**
- **(1) Exterior Recept – Per Print**
- **Conduit Drop**
- **Solar Prep Conduit Drop**
- **LUX™ Argon Gas Low E White Vinyl SH Windows – No Grids**
- **5" Window Lineal – Door Side & H. E.**
- **Kwikset® Smart Key Locks & Hardware**

UTILITIES

- **Carrier® Electric High Efficiency SmartComfort® Furnace with Door**
- **Sealed Duct System**
- 200 AMP Service Panel Box
- In-Line / Perimeter Floor Registers
- High/Low Return Air System (where available)
- **Rheem® 30AMP 40Gal. Hybrid Electric Heat Pump Water Heater with Door**
- Water Heater Pan with Exterior Drain
- PEX Plumbing
- Wire & Plumb for Washer
- Wire & Vent for Dryer Installed
- Individual Water Shut Offs Throughout
- Whole House Shut Off
- Linked Smoke Detectors in Main Living Areas & All Bedrooms
- **ecobee Smart Thermostat®**

CONSTRUCTION

- Steel I-Beam Frame with Detachable Hitch
- 2"x6" Floor Joists – 16" O.C.
- **2"x6" Exterior Walls – 16" O.C.**
- 19/32" T&G OSB floor Decking Glued & Fastened
- 20 lb. Roof Load
- Roof Truss 24" O.C.
- 7/16" OSB Roof Sheathing
- Ridge Vent Roof Venting
- Metal In-Floor Crossovers – Sectionals
- **Exterior Door Supports, Front & Rear Doors**
- All Exterior Penetrations Sealed
- **Whole House Ventilation Fan w/Switch**

PULSE COLLECTION



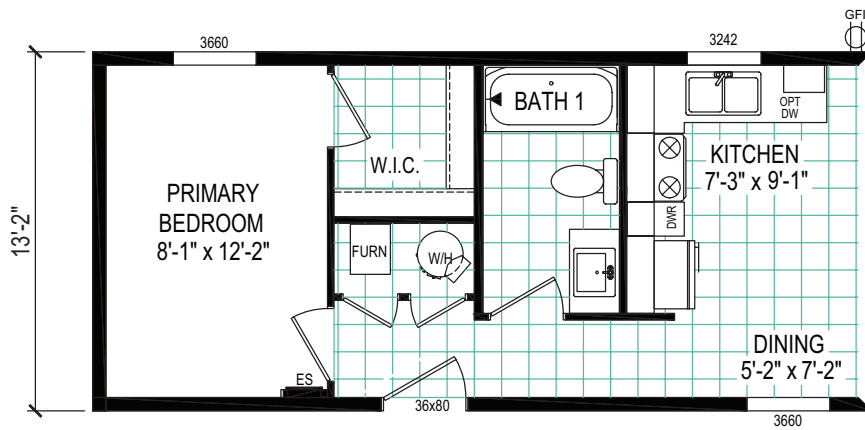
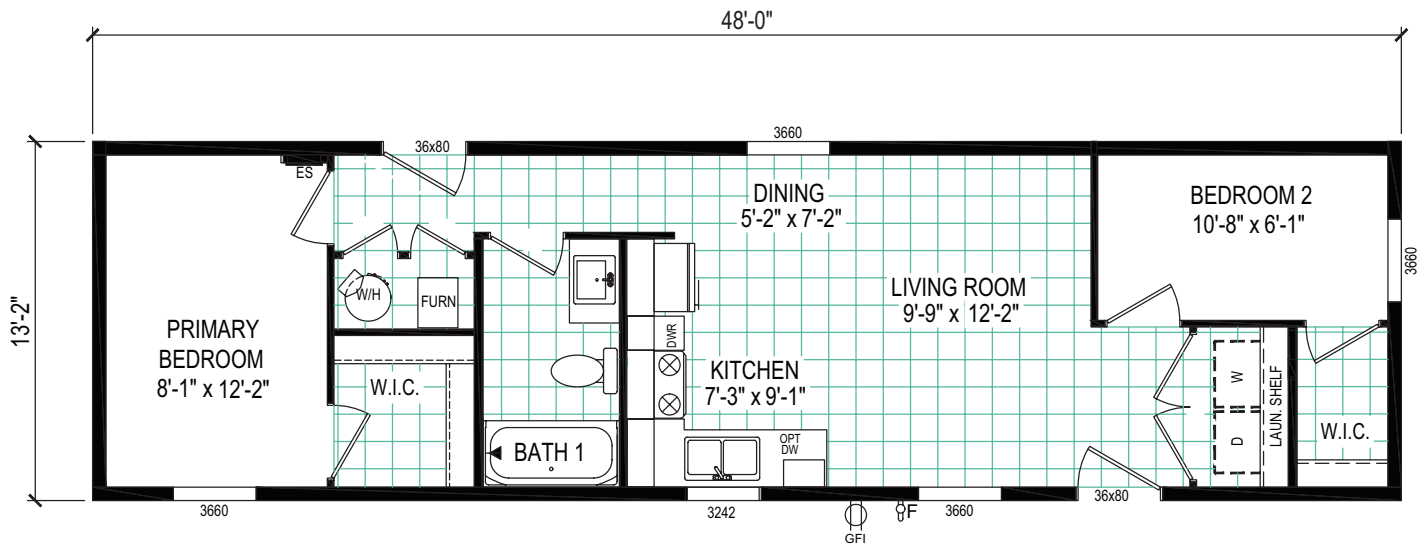
*Optional shutters shown in place of standard window lineals.

Single Section

4814-4790

2 beds | 1 bath | 656 sq. ft. | 14x48

eBuilt™



REVERSE AISLE OPTION

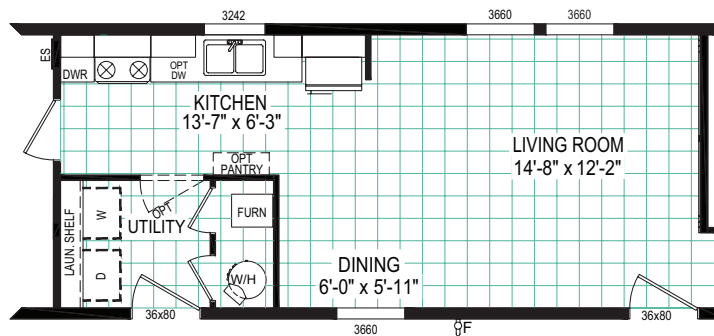
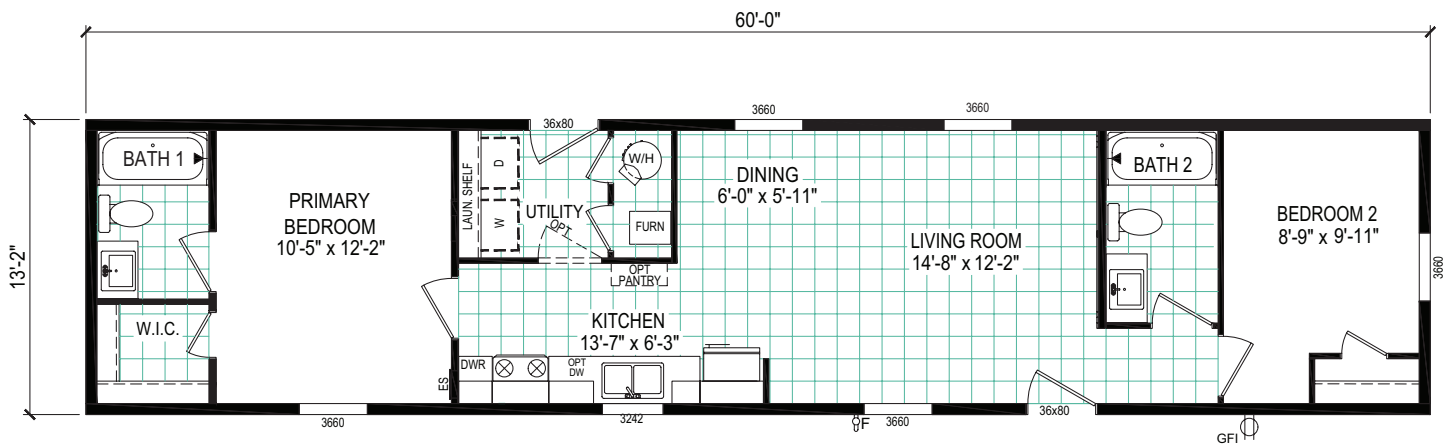
PULSE COLLECTION

Single Section

6014-4701

2 beds | 2 baths | 790 sq. ft. | 14x60

eBuilt™



REVERSE AISLE OPTION

PULSE COLLECTION



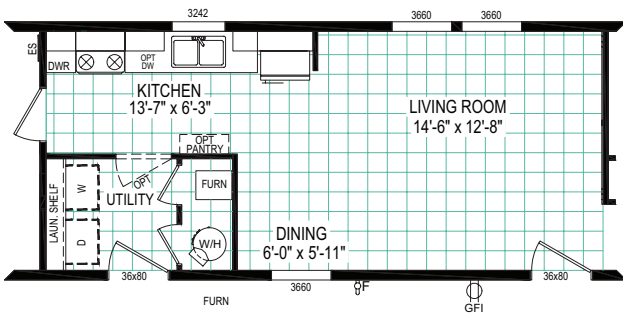
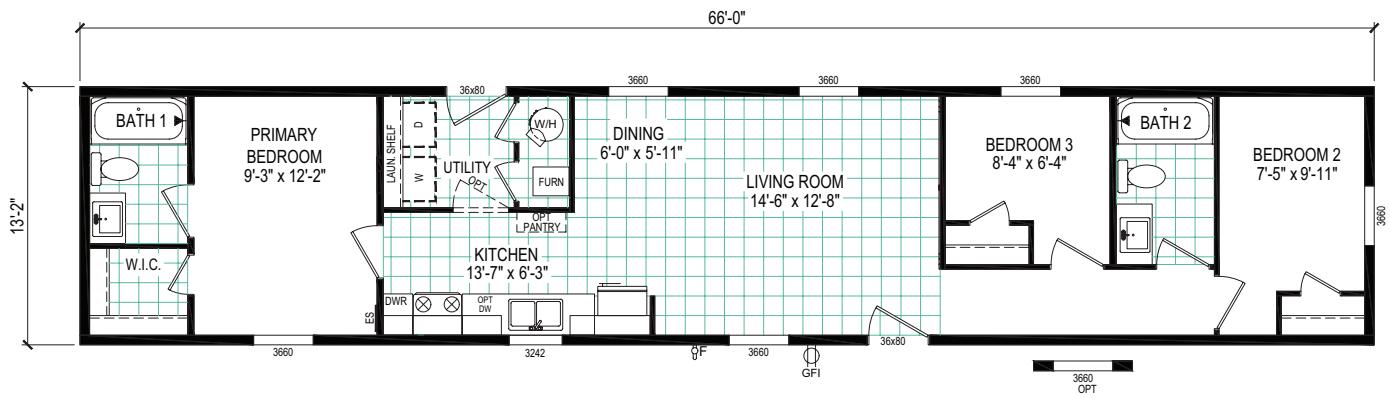
*Optional shutters shown in place of standard window lineals.

Single Section

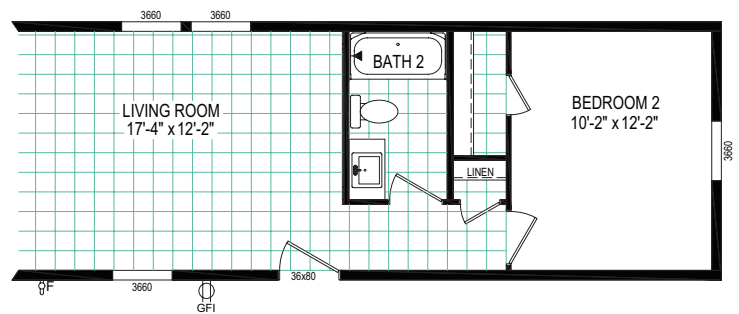
6614-4701

3 beds | 2 baths | 869 sq. ft. | 14x66

eBuilt™



REVERSE AISLE OPTION



2-BEDROOM OPTION

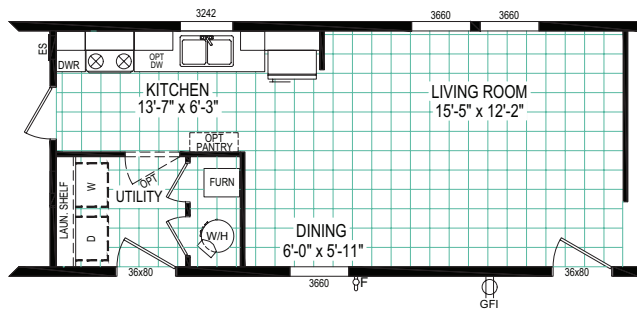
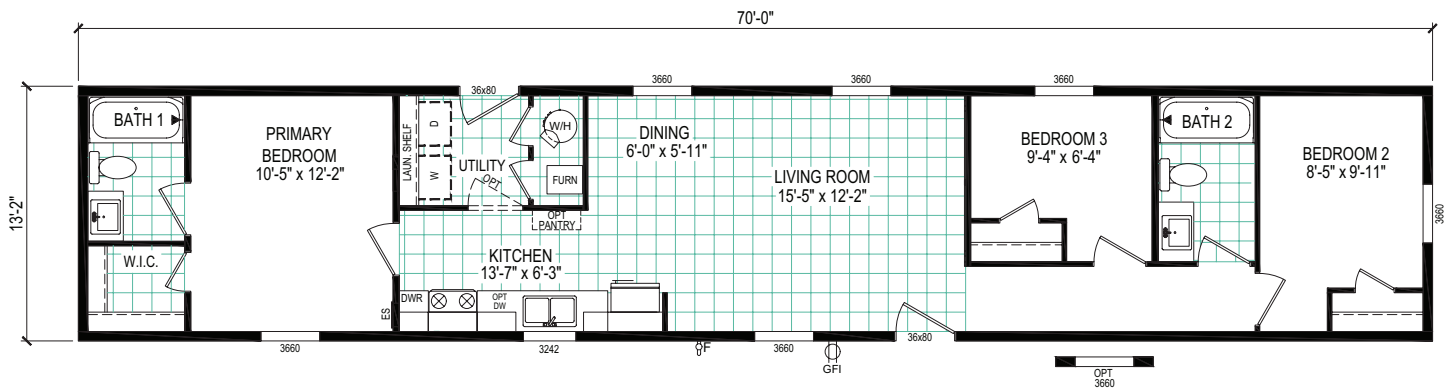
PULSE COLLECTION

Single Section

7014-4701

3 beds | 2 baths | 922 sq. ft. | 14x70

eBuilt™



REVERSE AISLE OPTION

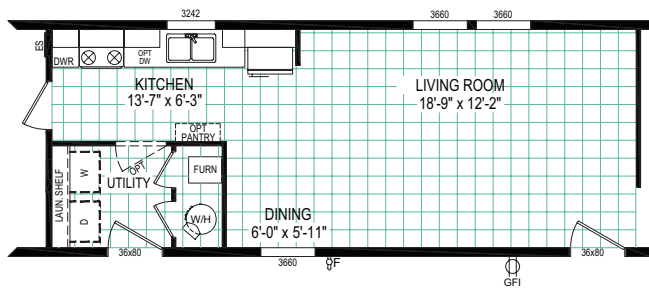
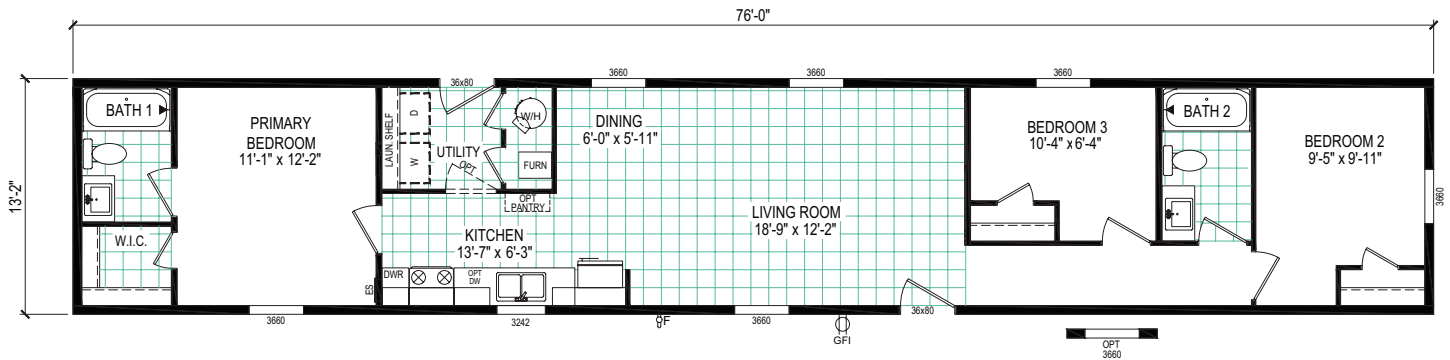
PULSE COLLECTION

Single Section

7614-4701

3 beds | 2 baths | 1,001 sq. ft. | 14x76

eBuilt™



REVERSE AISLE OPTION

PULSE COLLECTION



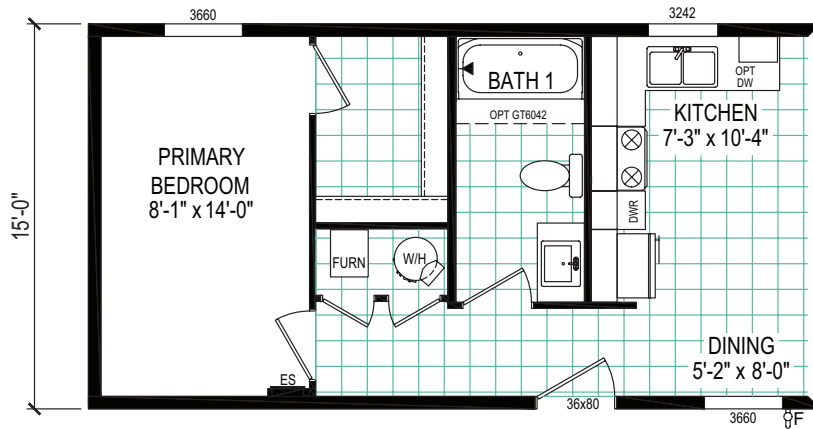
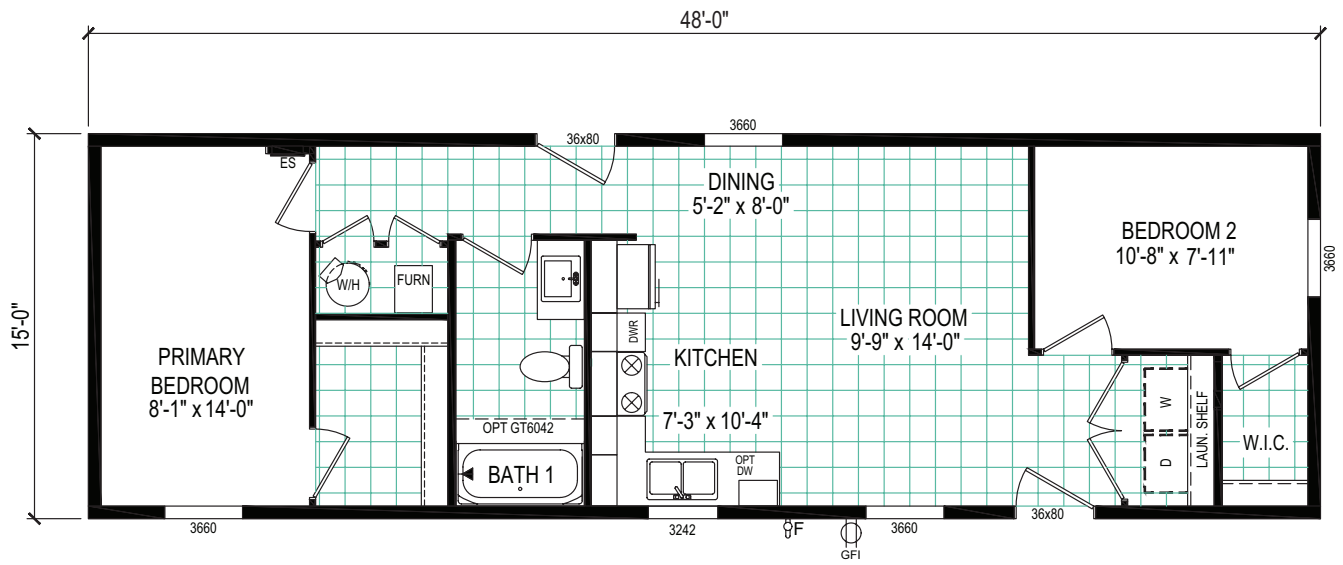
*Optional shutters shown in place of standard window lineals.

Single Section

4816-4790

2 beds | 1 bath | 720 sq. ft. | 16x48

eBuilt™



REVERSE AISLE OPTION

PULSE COLLECTION



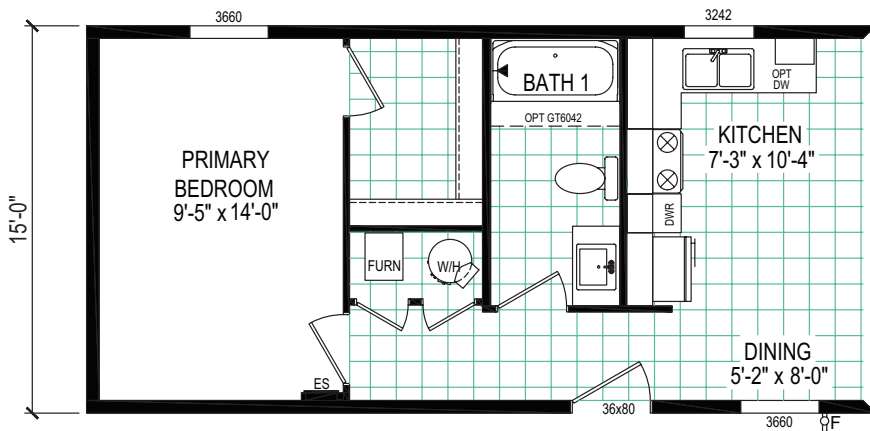
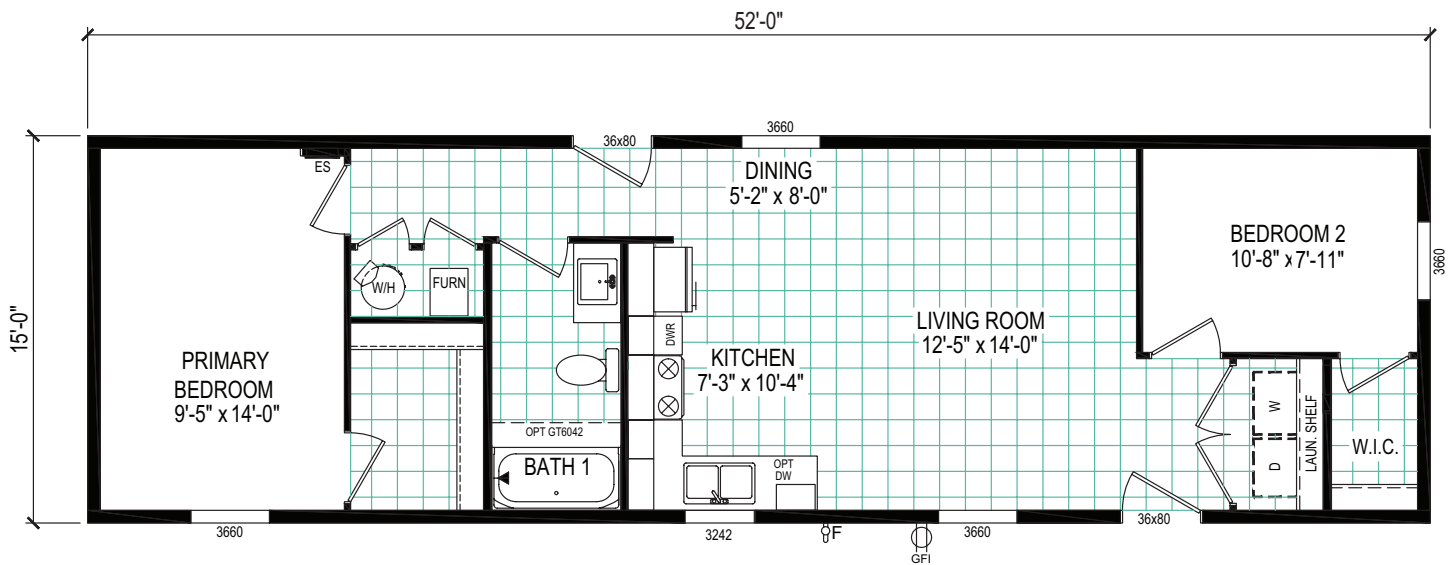
*Optional shutters shown in place of standard window lineals.

Single Section

5216-4790

2 beds | 1 bath | 780 sq. ft. | 16x52

eBuilt™



REVERSE AISLE OPTION

PULSE COLLECTION

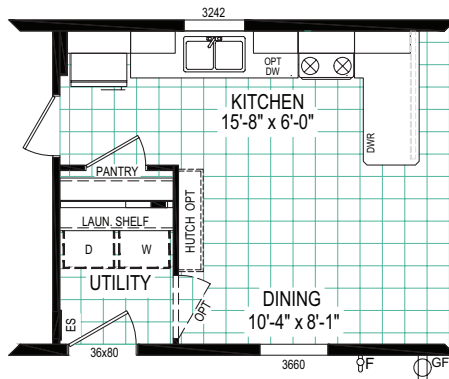
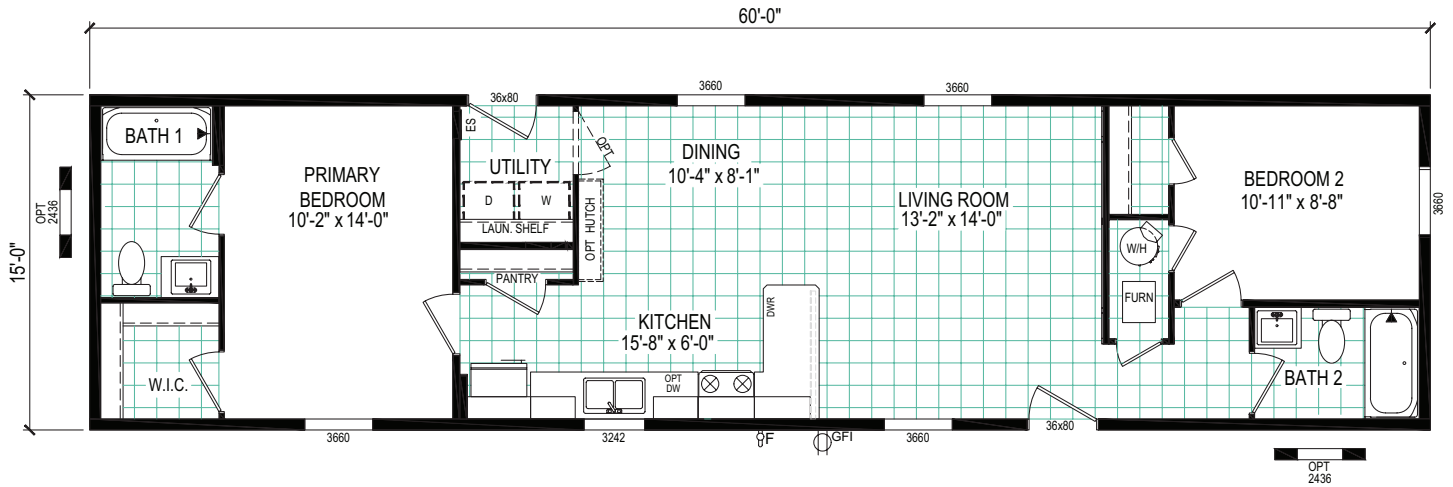


Single Section

6016-4711

2 beds | 2 baths | 900 sq. ft. | 16x60

eBuilt™



REVERSE AISLE OPTION

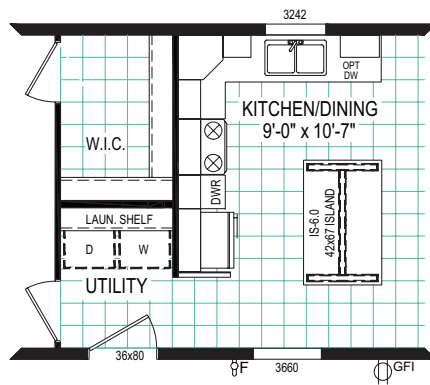
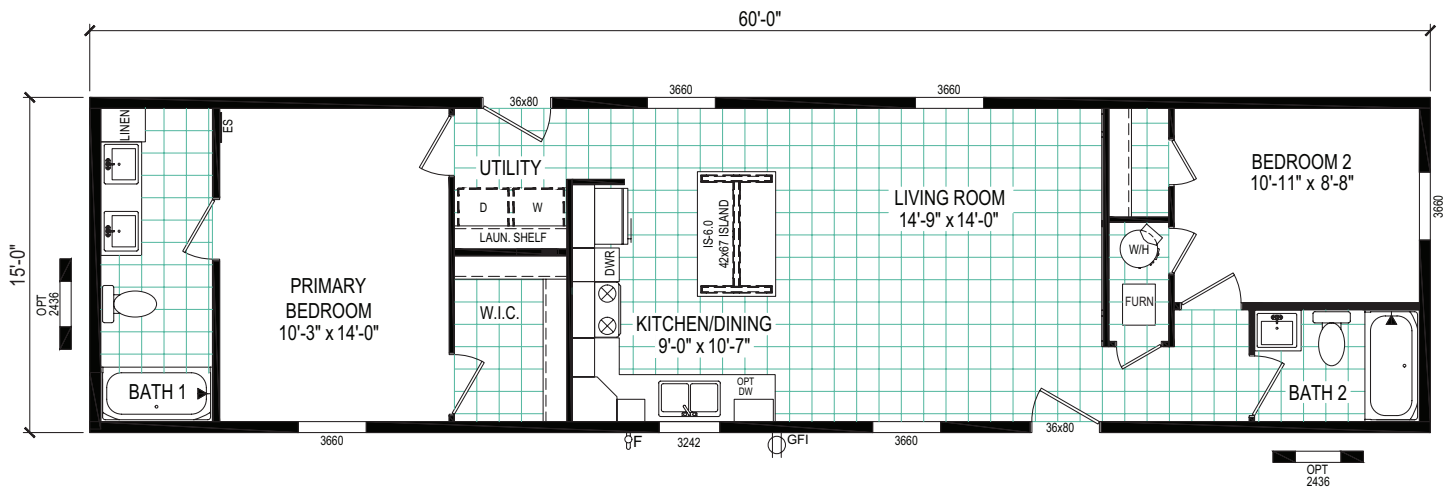
PULSE COLLECTION

Single Section

6016-4779

2 beds | 2 baths | 900 sq. ft. | 16x60

eBuilt™



REVERSE AISLE OPTION

PULSE COLLECTION



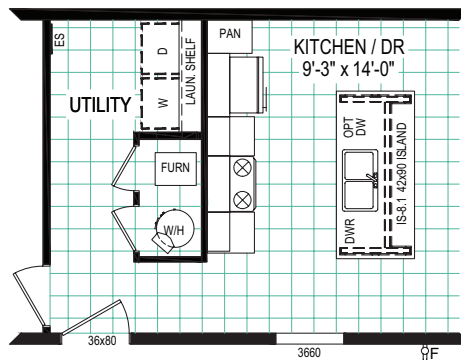
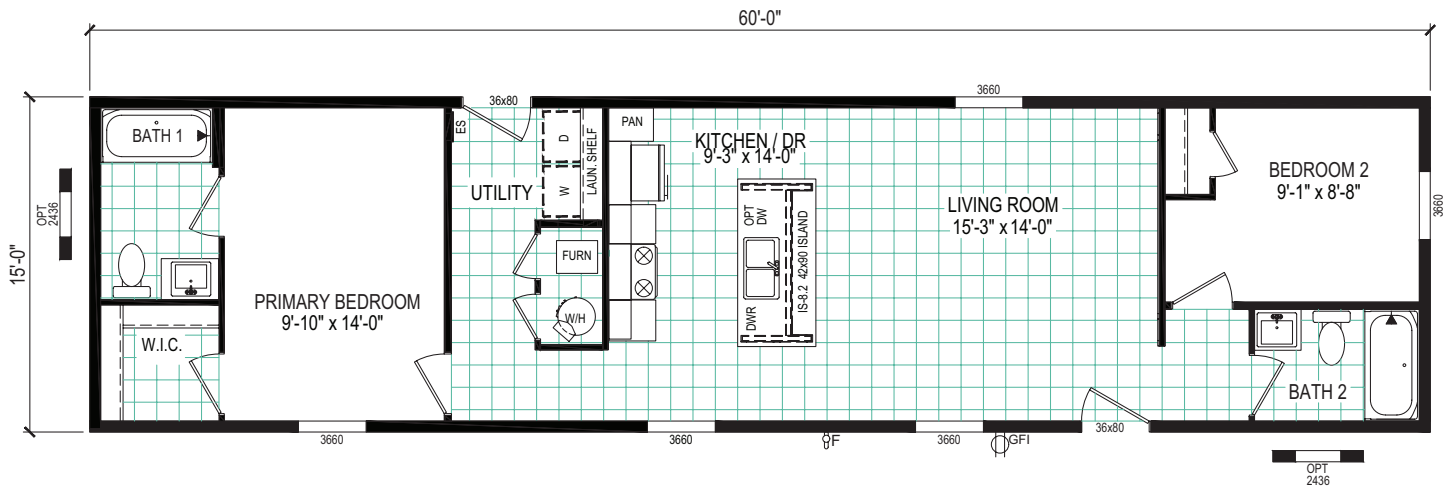
*Optional shutters shown in place of standard window lineals.

Single Section

6016-4791

2 beds | 2 baths | 900 sq. ft. | 16x60

eBuilt™



REVERSE AISLE OPTION

PULSE COLLECTION



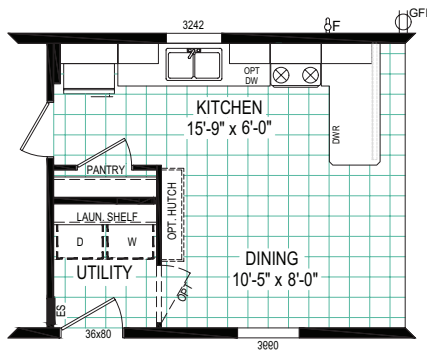
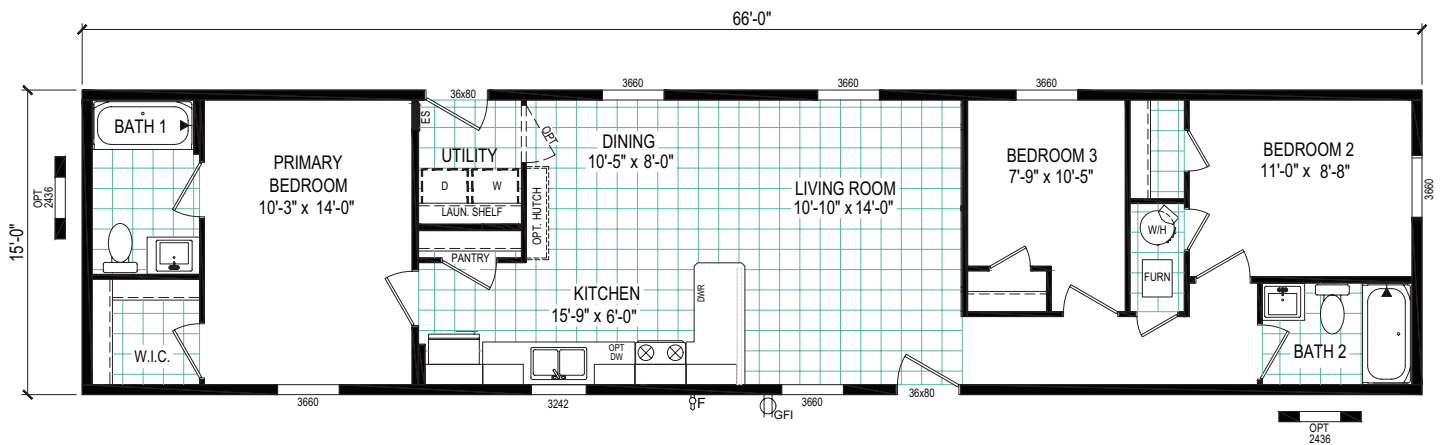
*Optional shutters shown in place of standard window lineals.

Single Section

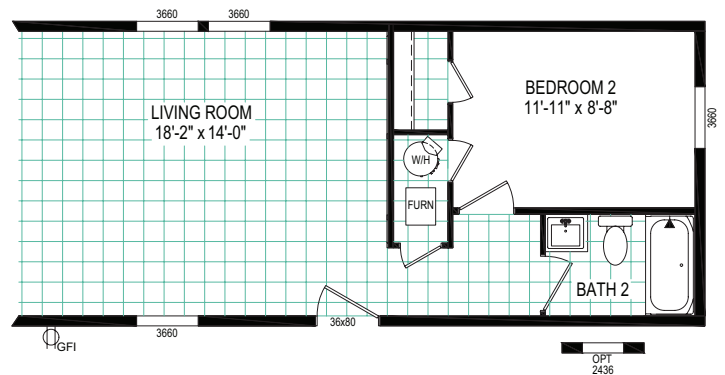
6616-4711

3 beds | 2 baths | 990 sq. ft. | 16x66

eBuilt™



REVERSE AISLE OPTION



2-BEDROOM OPTION

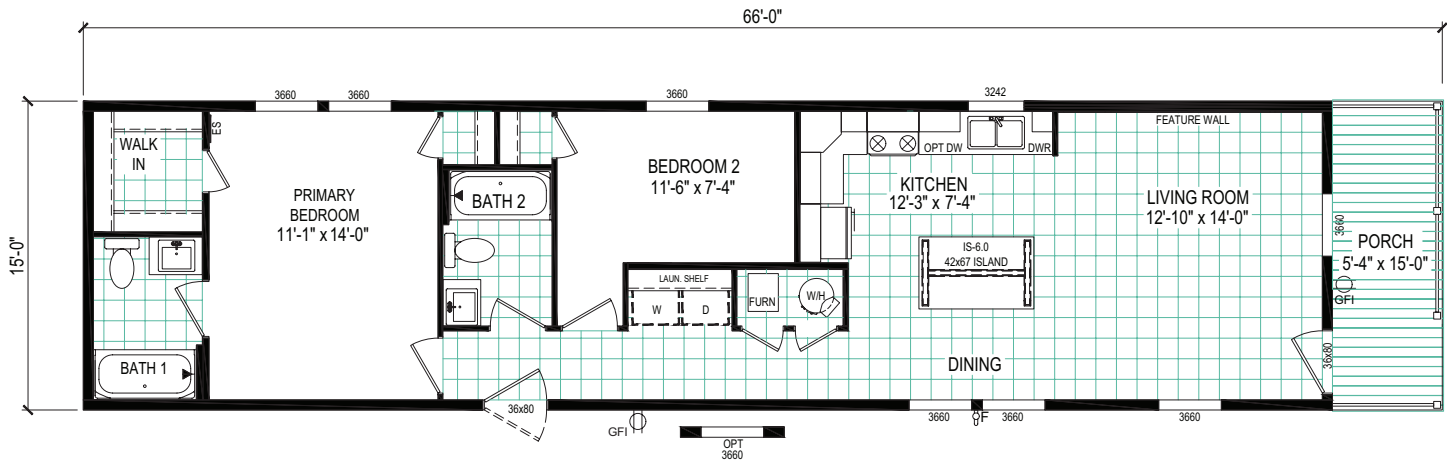
PULSE COLLECTION

Single Section

6616-4772P

2 beds | 2 baths | 910 sq. ft. | 16x66

eBuilt™



PULSE COLLECTION



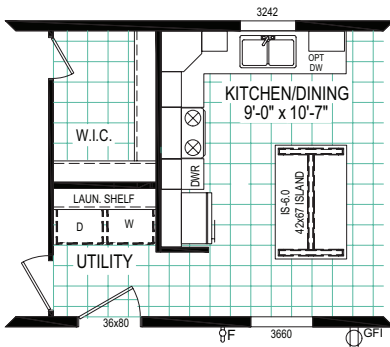
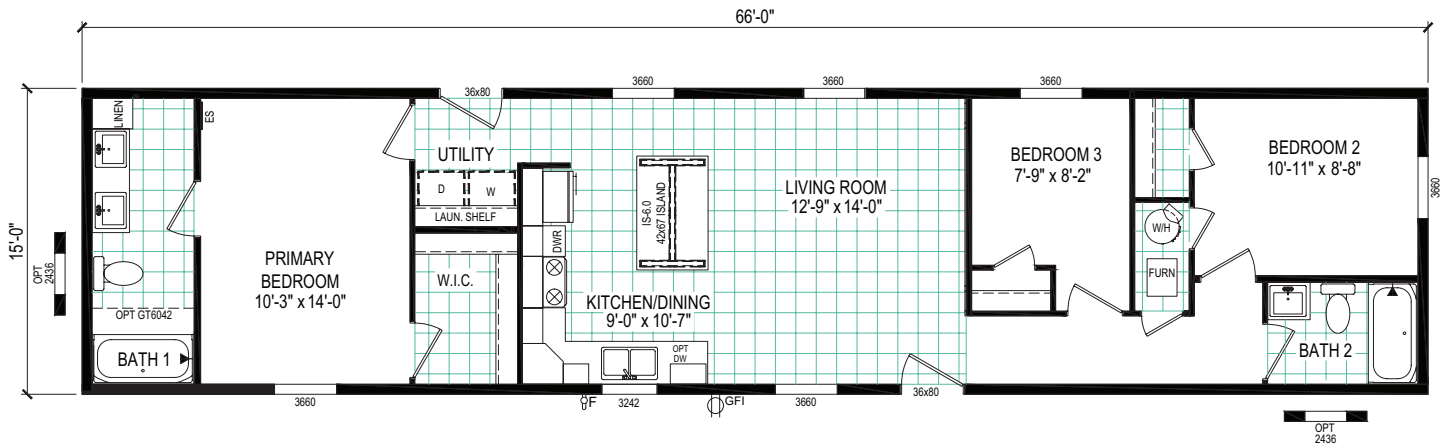
*Optional shutters shown in place of standard window lineals.

Single Section

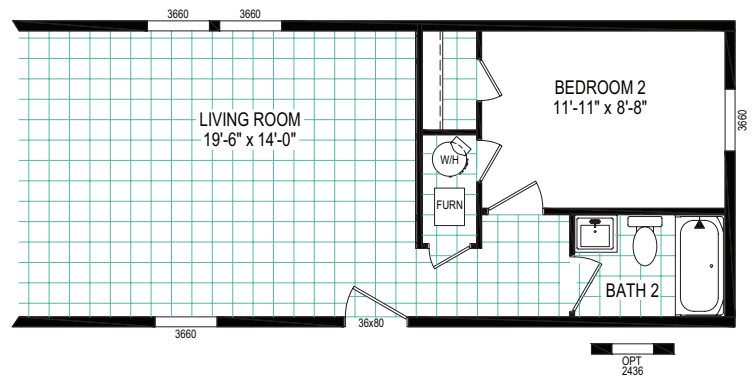
6616-4779

3 beds | 2 baths | 990 sq. ft. | 16x66

eBuilt™



REVERSE AISLE OPTION



2-BEDROOM OPTION

PULSE COLLECTION



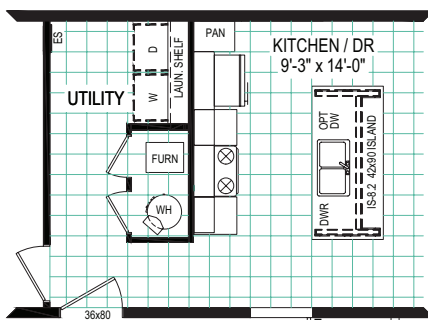
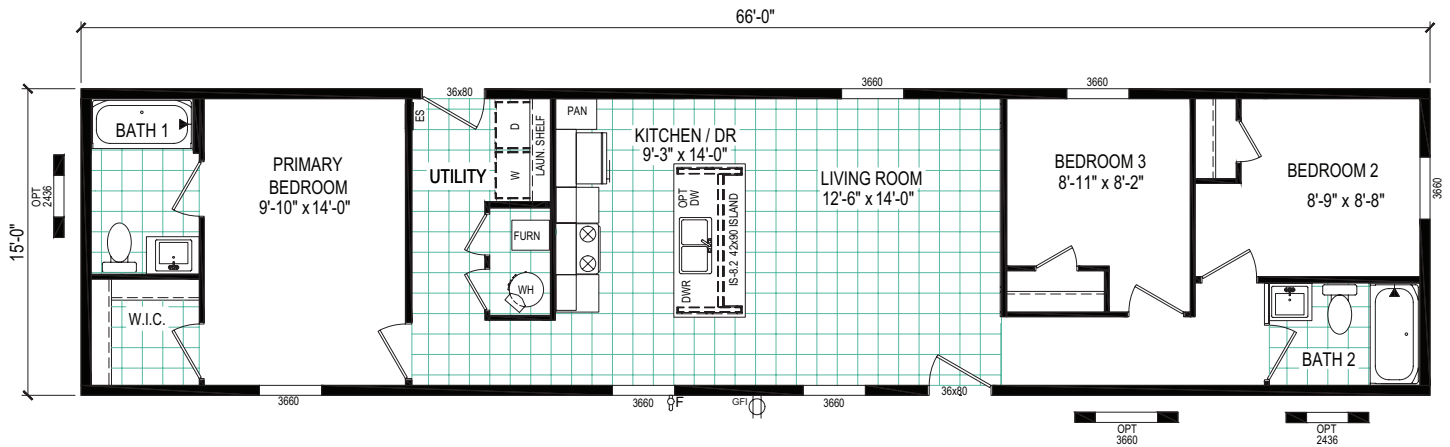
*Optional shutters shown in place of standard window lineals.

Single Section

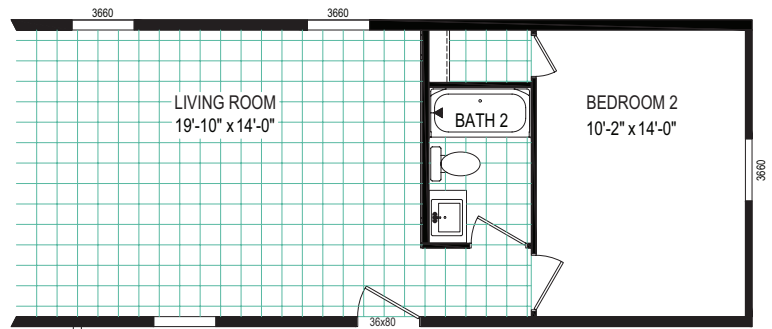
6616-4791

3 beds | 2 baths | 990 sq. ft. | 16x66

eBuilt™



REVERSE AISLE OPTION



2-BEDROOM OPTION

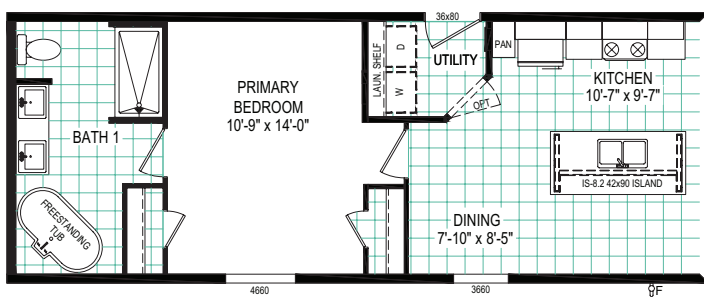
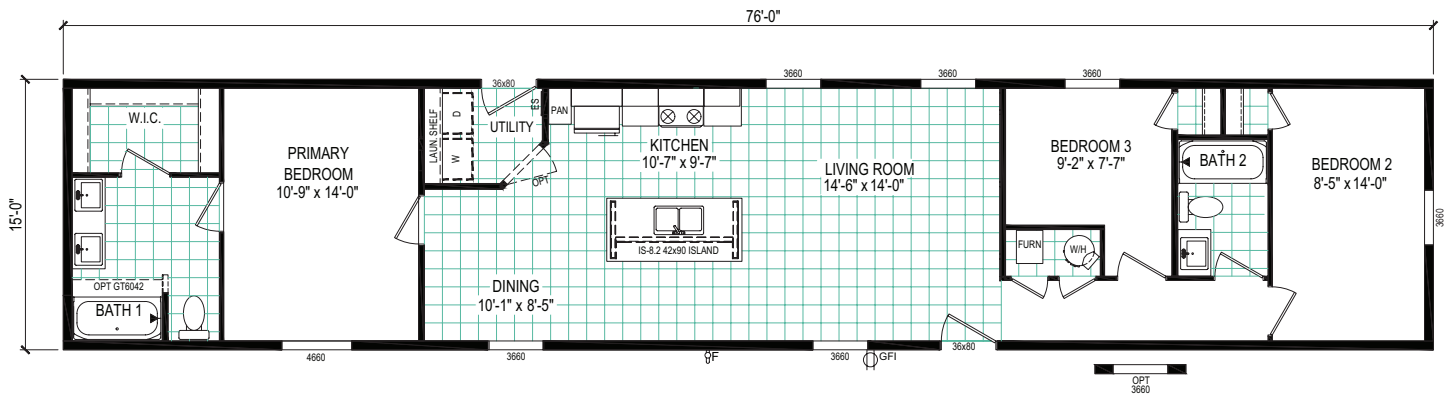
PULSE COLLECTION

Single Section

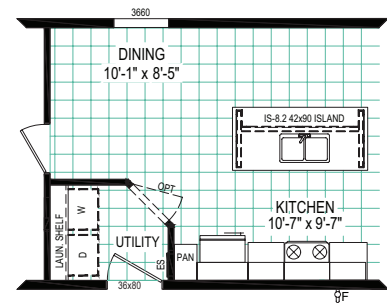
7616-4700

3 beds | 2 baths | 1,140 sq. ft. | 16x76

eBuilt™



OPTIONAL DREAM BATH



REVERSE AISLE OPTION

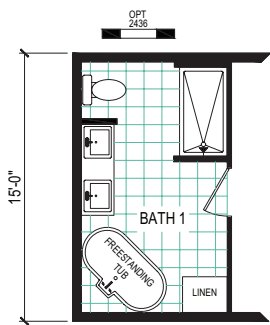
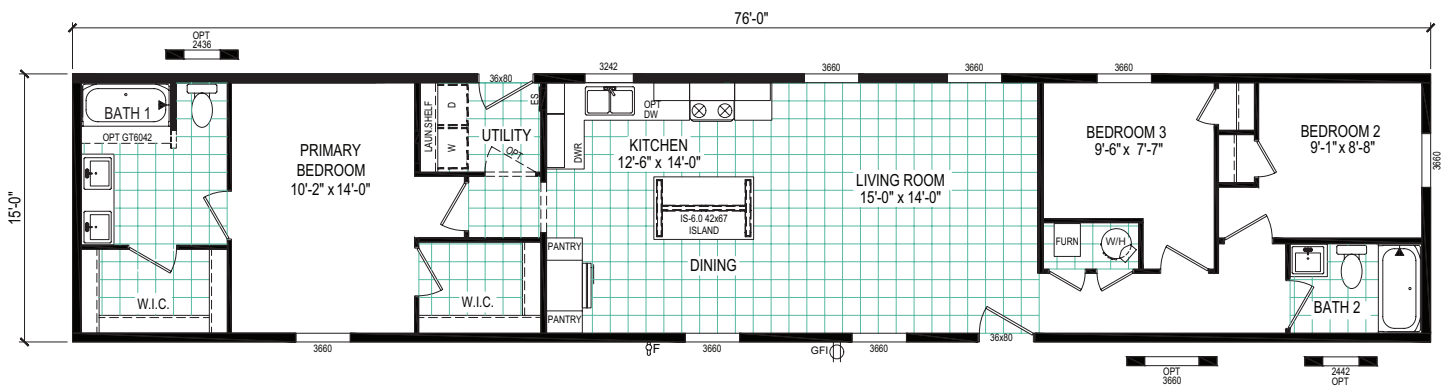
PULSE COLLECTION

Single Section

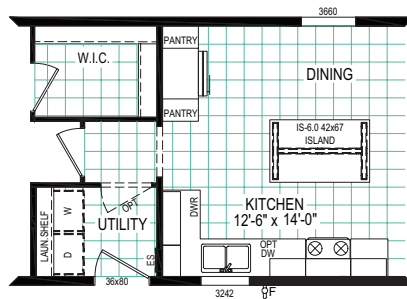
7616-4710

3 beds | 2 baths | 1,140 sq. ft. | 16x76

eBuilt™



OPTIONAL DREAM BATH



REVERSE AISLE OPTION

PULSE COLLECTION



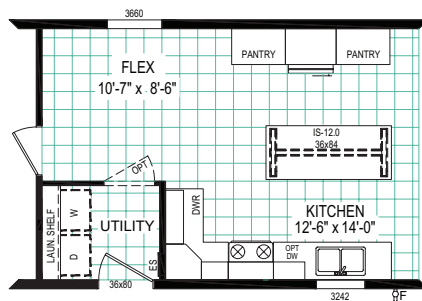
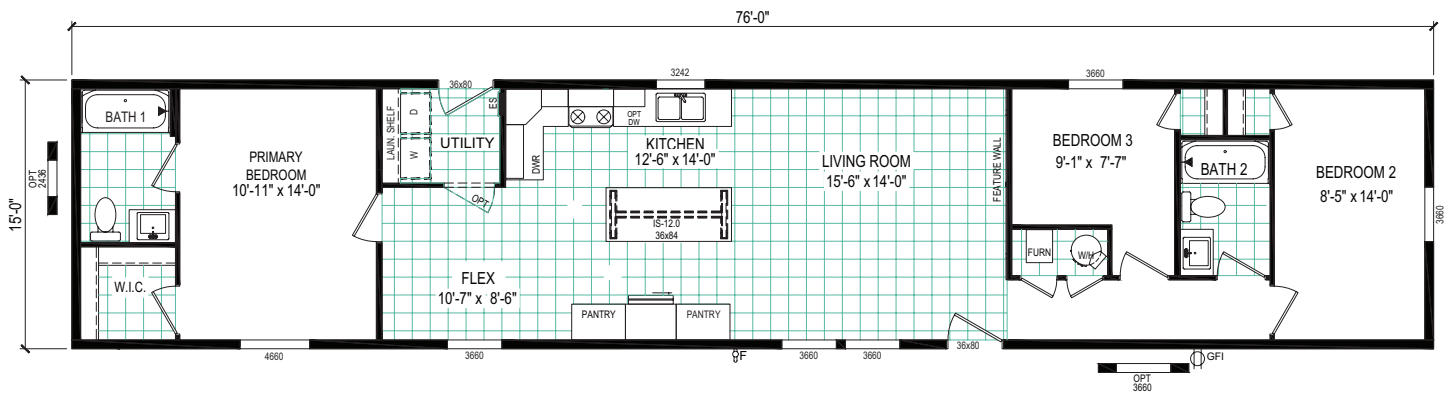
*Optional shutters shown in place of standard window lineals.

Single Section

7616-4714

3 beds | 2 baths | 1,140 sq. ft. | 16x76

eBuilt™



REVERSE AISLE OPTION

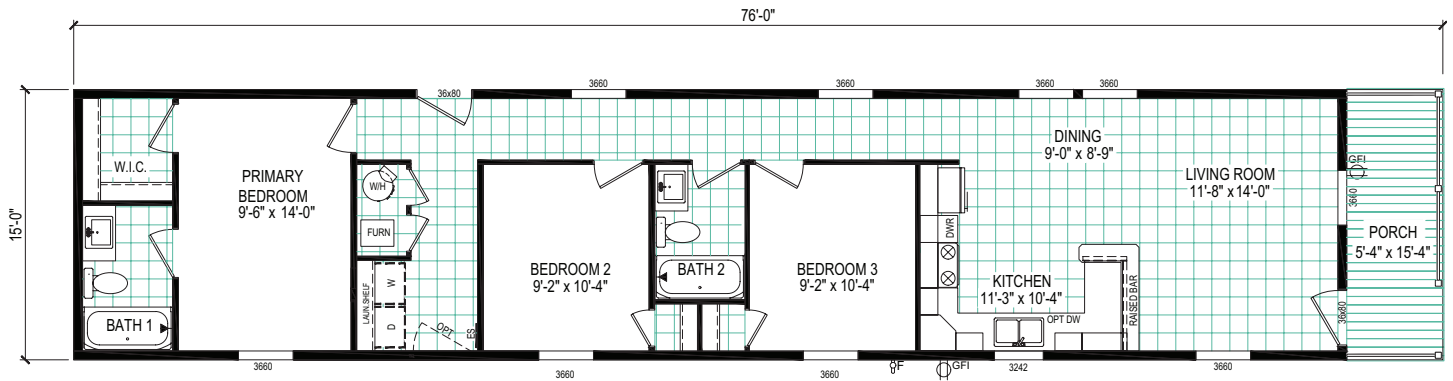
PULSE COLLECTION

Single Section

7616-4773P

3 beds | 2 baths | 1,060 sq. ft. | 16x76

eBuilt™



PULSE COLLECTION



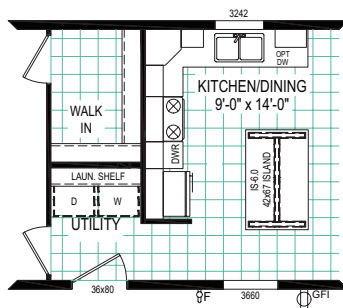
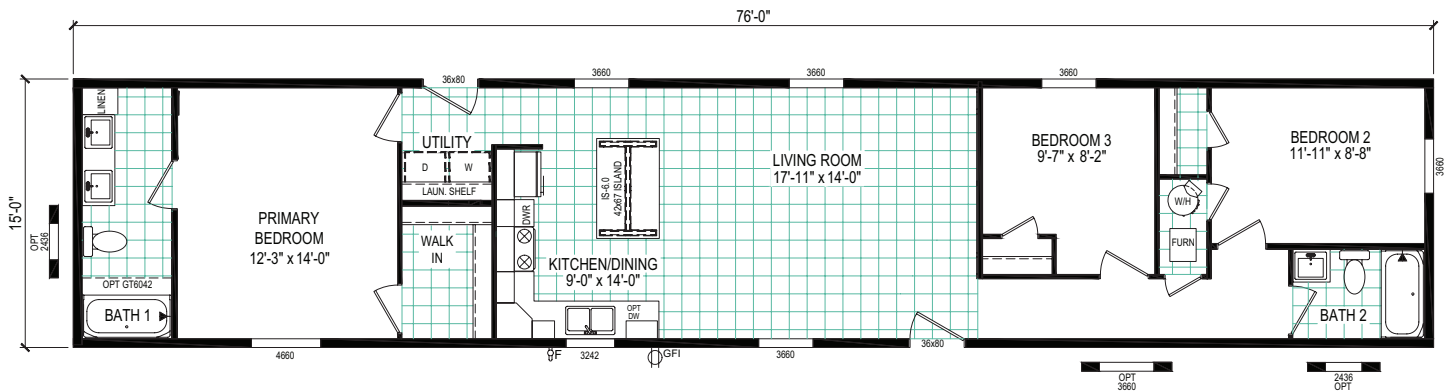
*Optional shutters shown in place of standard window lineals.

Single Section

7616-4779

3 beds | 2 baths | 1,140 sq. ft. | 16x76

eBuilt™



REVERSE AISLE OPTION

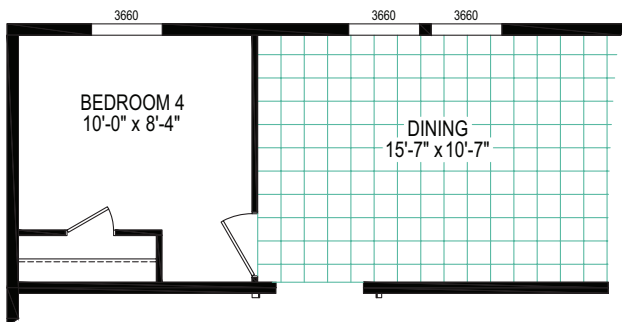
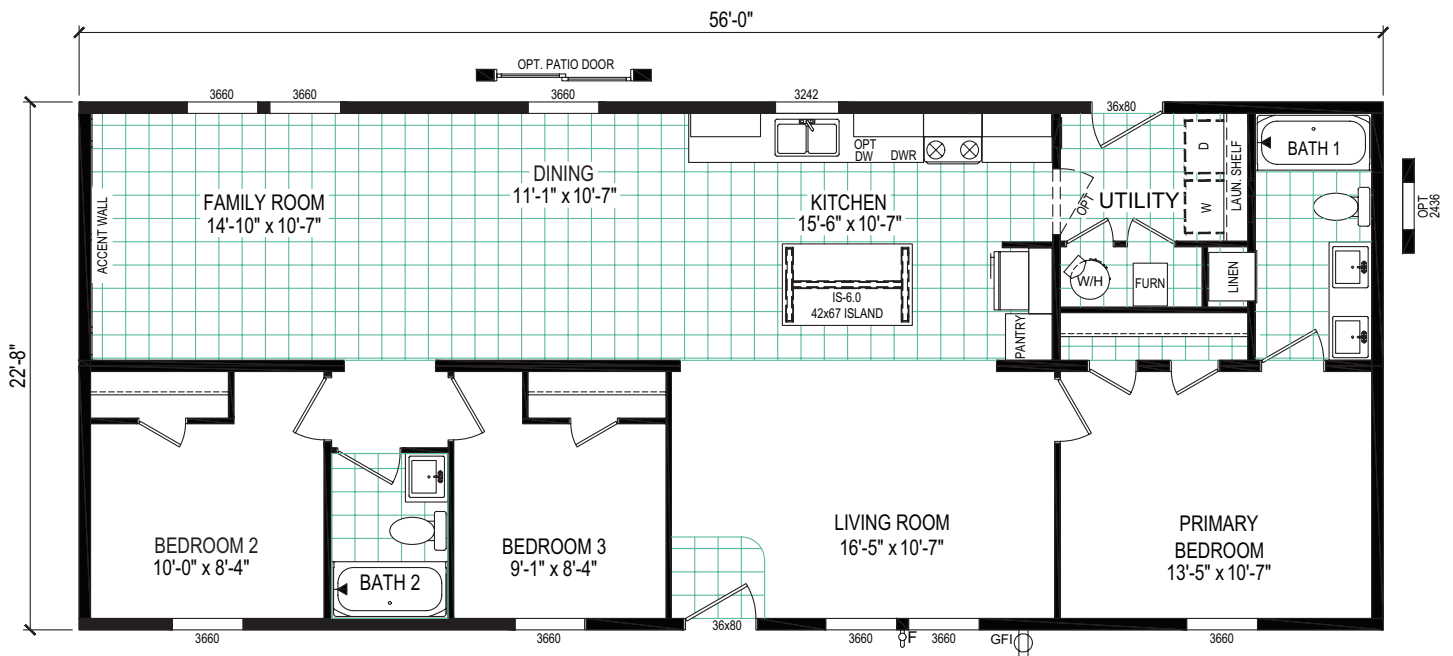
PULSE COLLECTION



Multi-Section

5624-E744

3 beds | 2 baths | 1,270 sq. ft. | 24x56



4th BEDROOM OPTION

PULSE COLLECTION

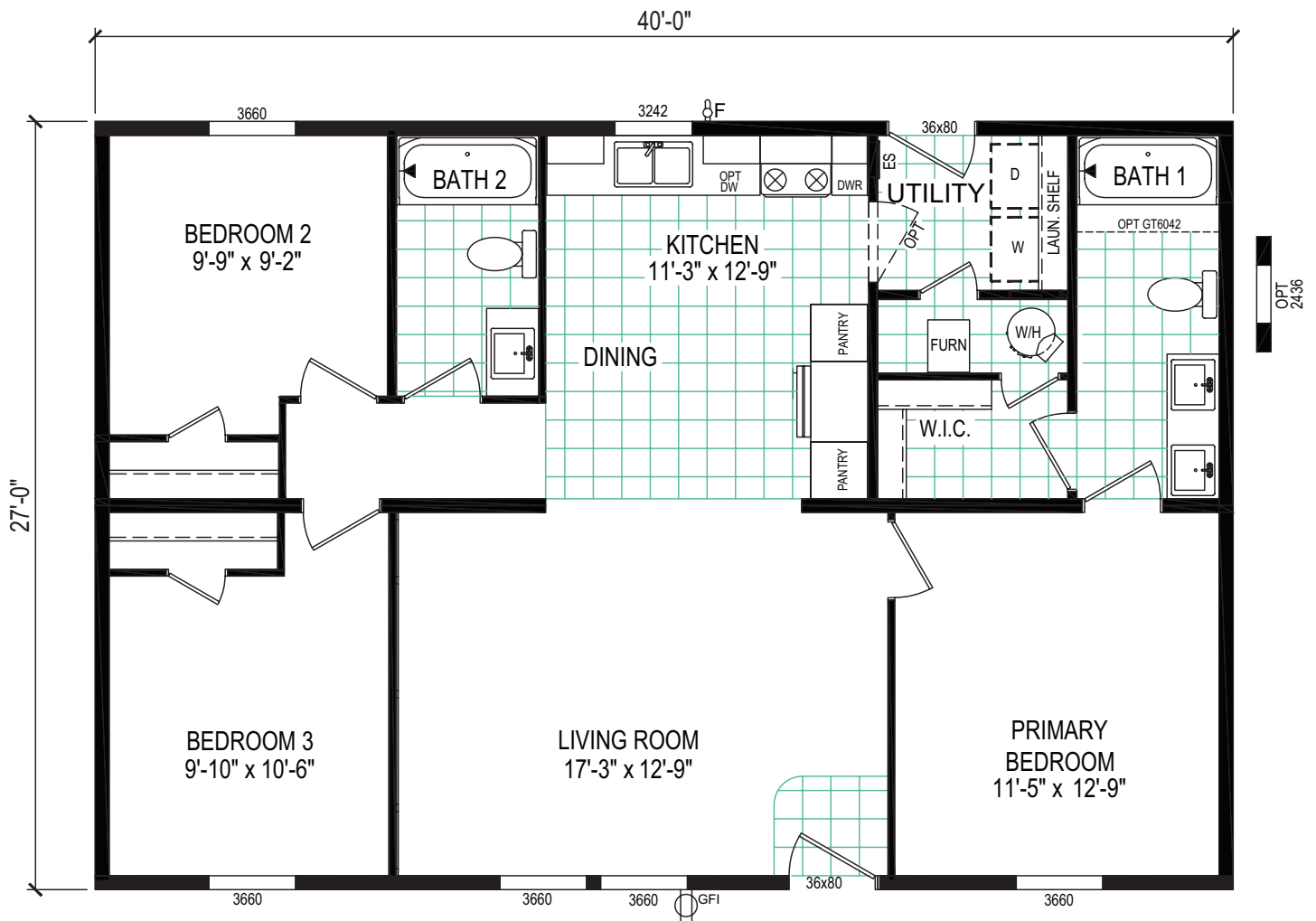


*Optional shutters shown in place of standard window lineals.

Multi-Section

4028-E751

3 beds | 2 baths | 1,080 sq. ft. | 28x40



PULSE COLLECTION



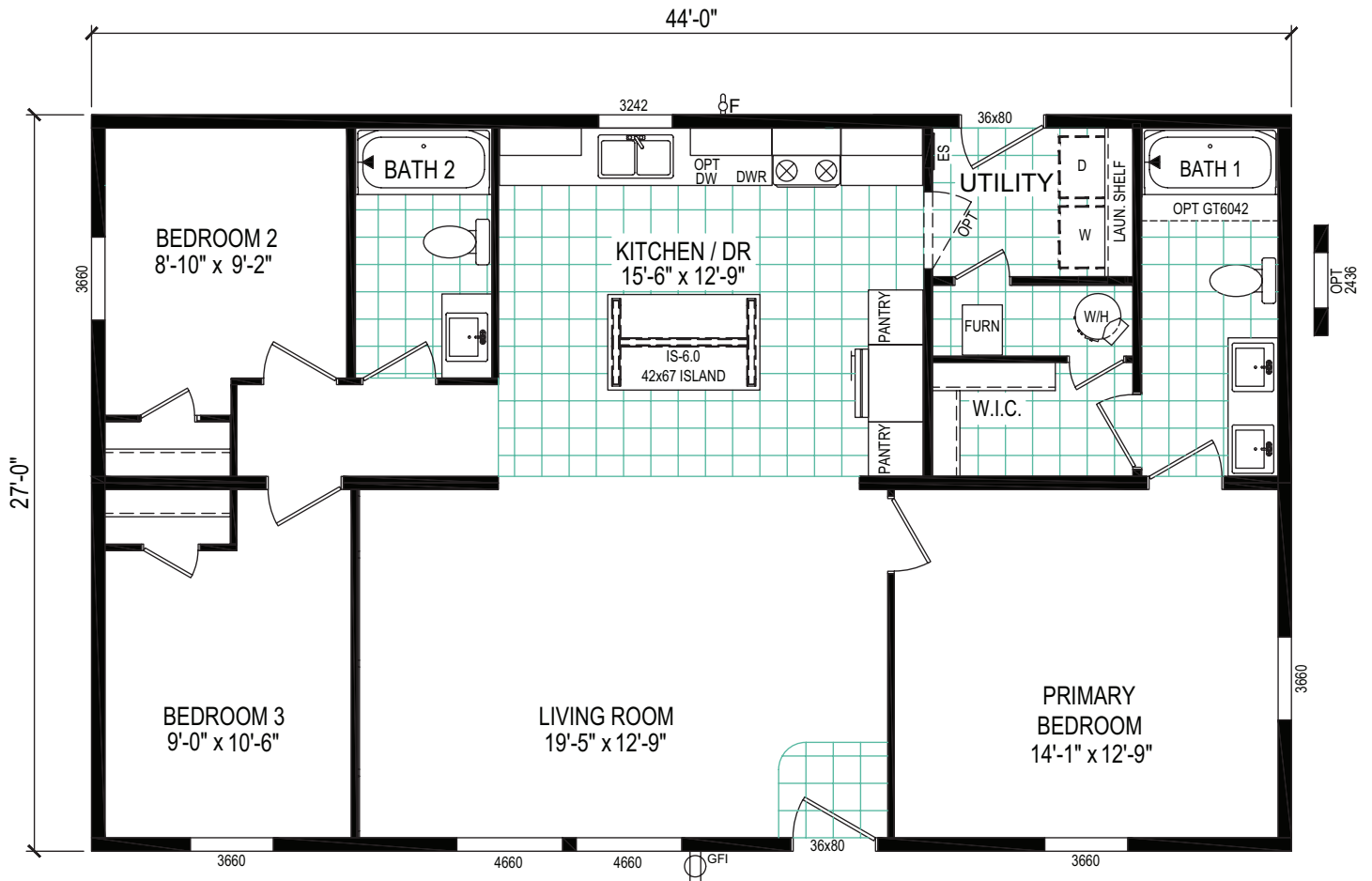
*Optional shutters shown in place of standard window lineals.

Multi-Section

4428-E781

3 beds | 2 baths | 1,188 sq. ft. | 28x44

eBuilt™



PULSE COLLECTION



*Optional shutters shown in place of standard window lineals.

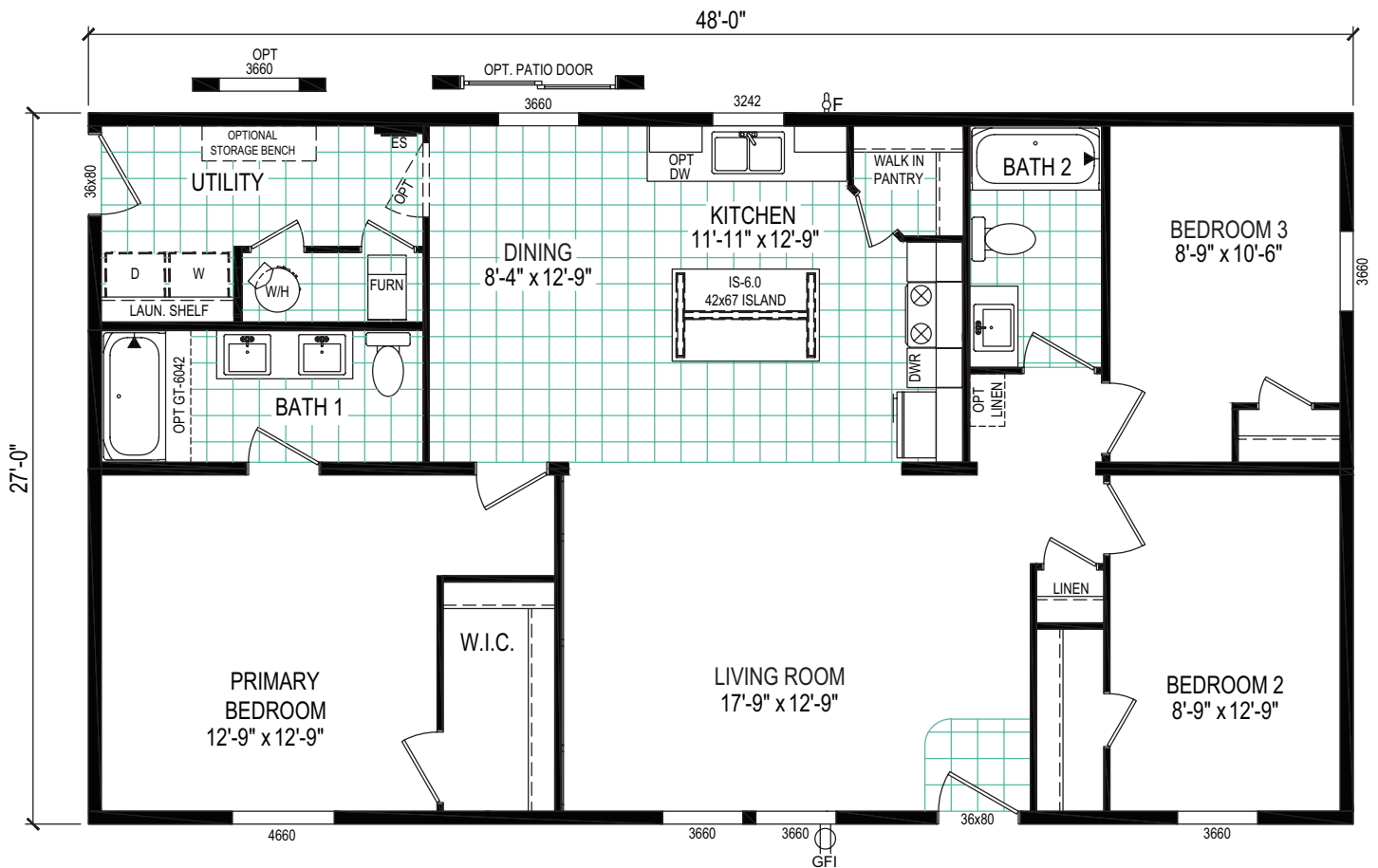
Multi-Section

*Shown with options "A" Brow Exterior Package

4828-E746

3 beds | 2 baths | 1,296 sq. ft. | 28x48

eBuilt™



PULSE COLLECTION



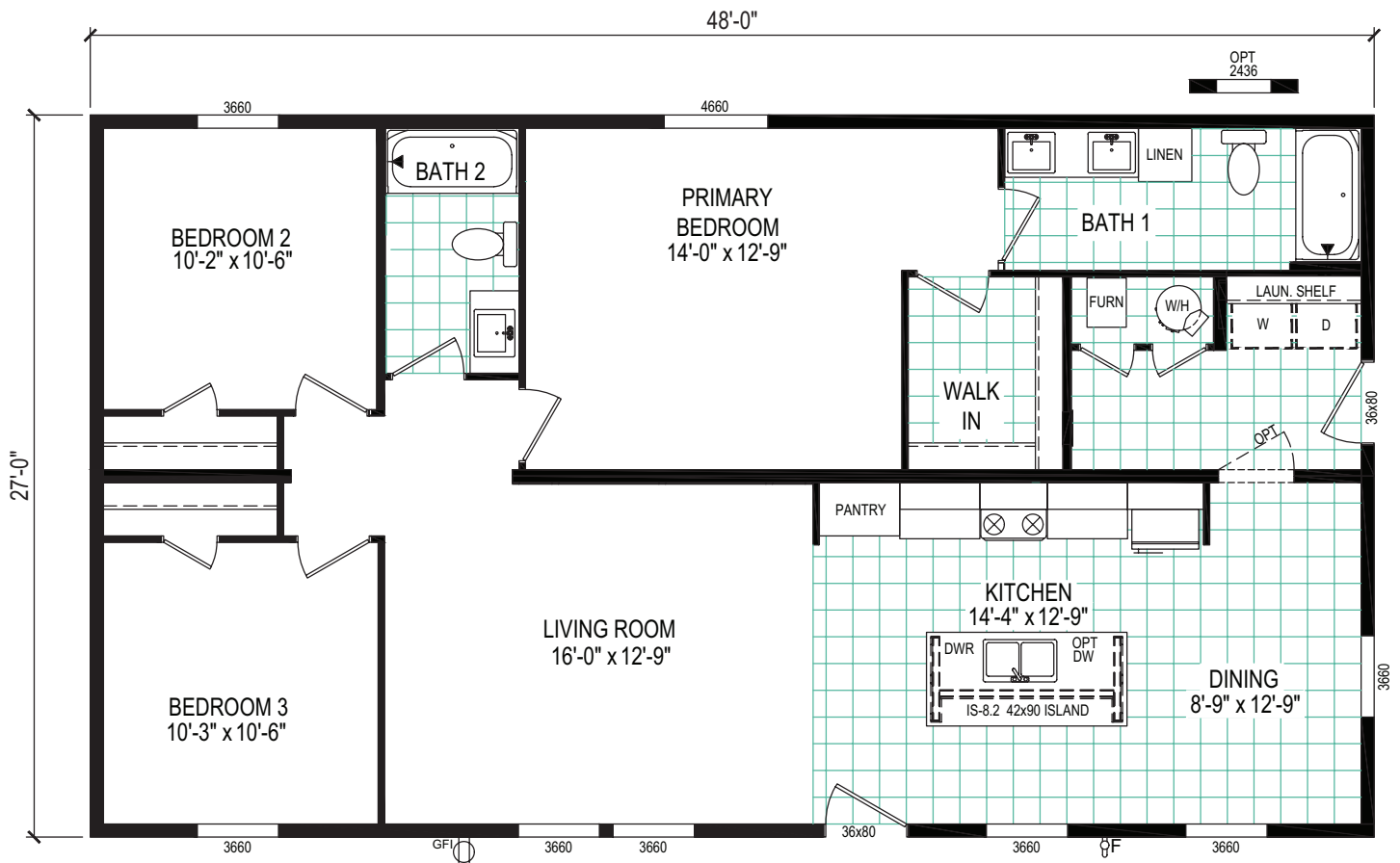
*Optional shutters shown in place of standard window lineals.

Multi-Section

*Shown w/ Optional 10' Dormer

4828-E782

3 beds | 2 baths | 1,296 sq. ft. | 28x48



PULSE COLLECTION



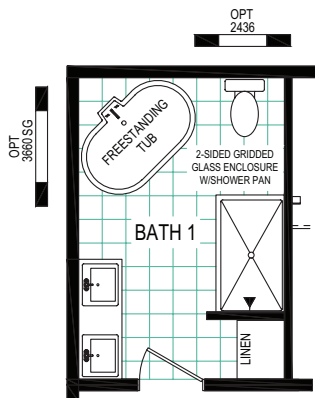
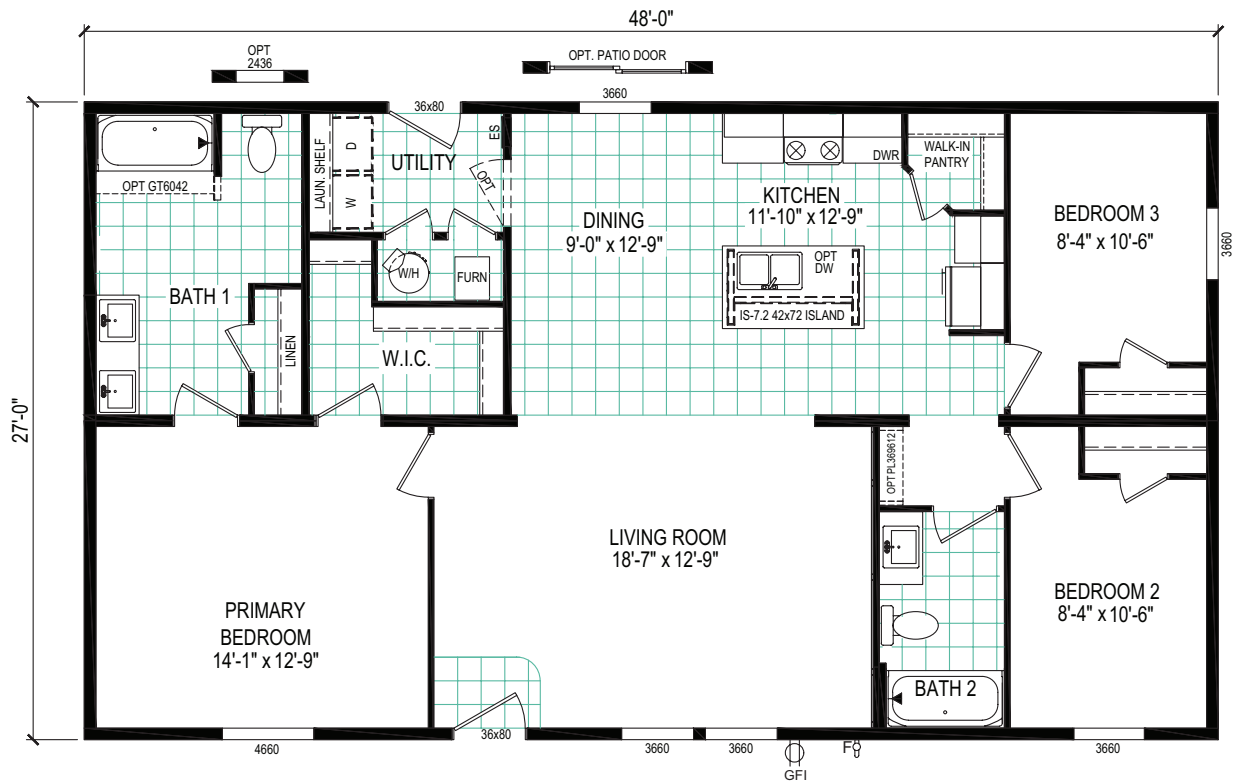
*Optional shutters shown in place of standard window lineals.

Multi-Section

*Shown w/ Optional 10' Dormer

4828-E783

3 beds | 2 baths | 1,296 sq. ft. | 28x48



OPTIONAL DREAM BATH

PULSE COLLECTION



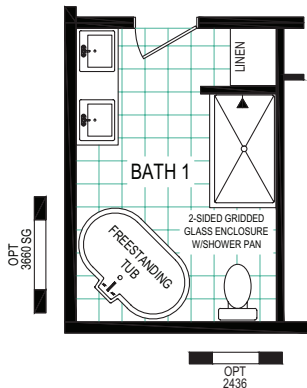
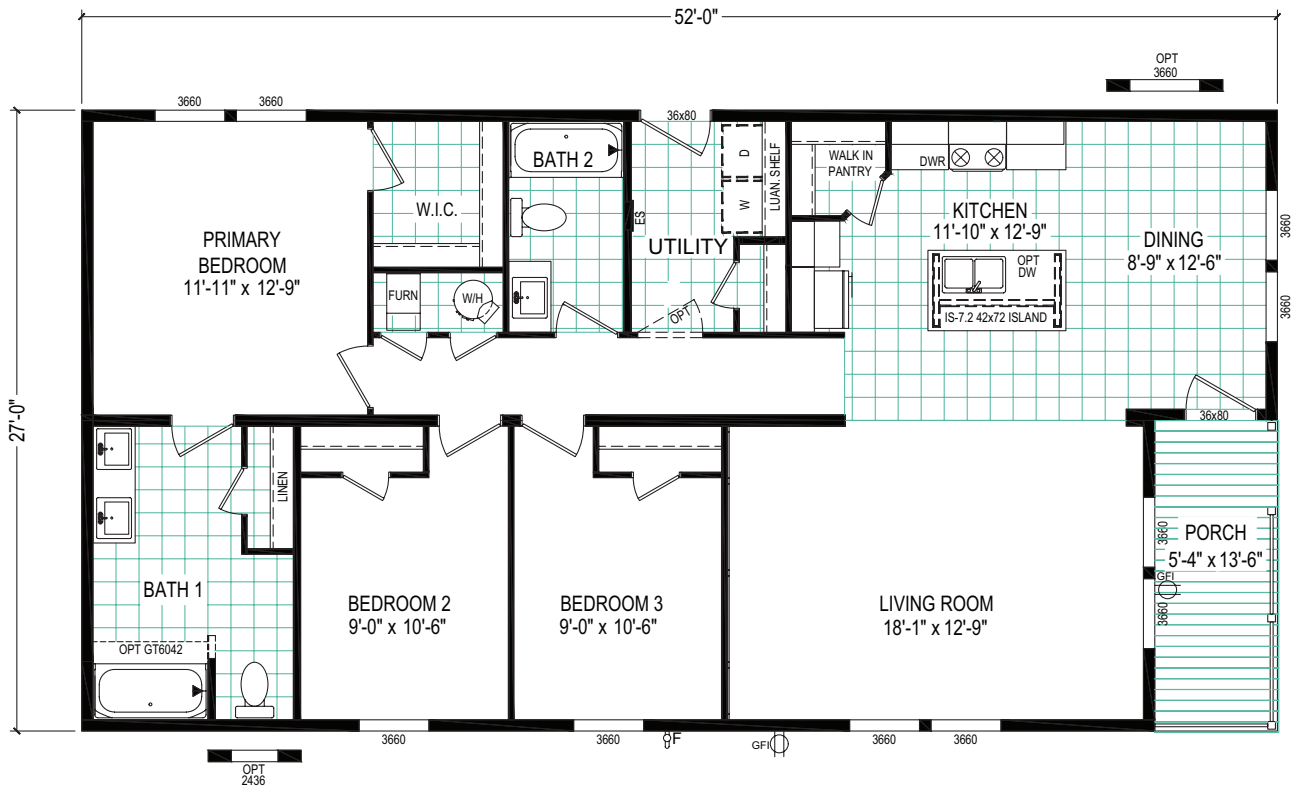
*Optional shutters shown in place of standard window lineals.

Multi-Section

5228-E774P

3 beds | 2 baths | 1,332 sq. ft. | 28x52

eBuilt™



OPTIONAL DREAM BATH

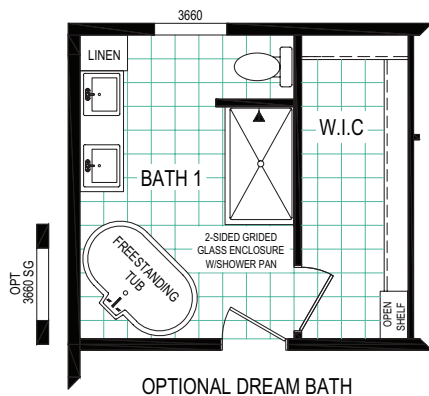
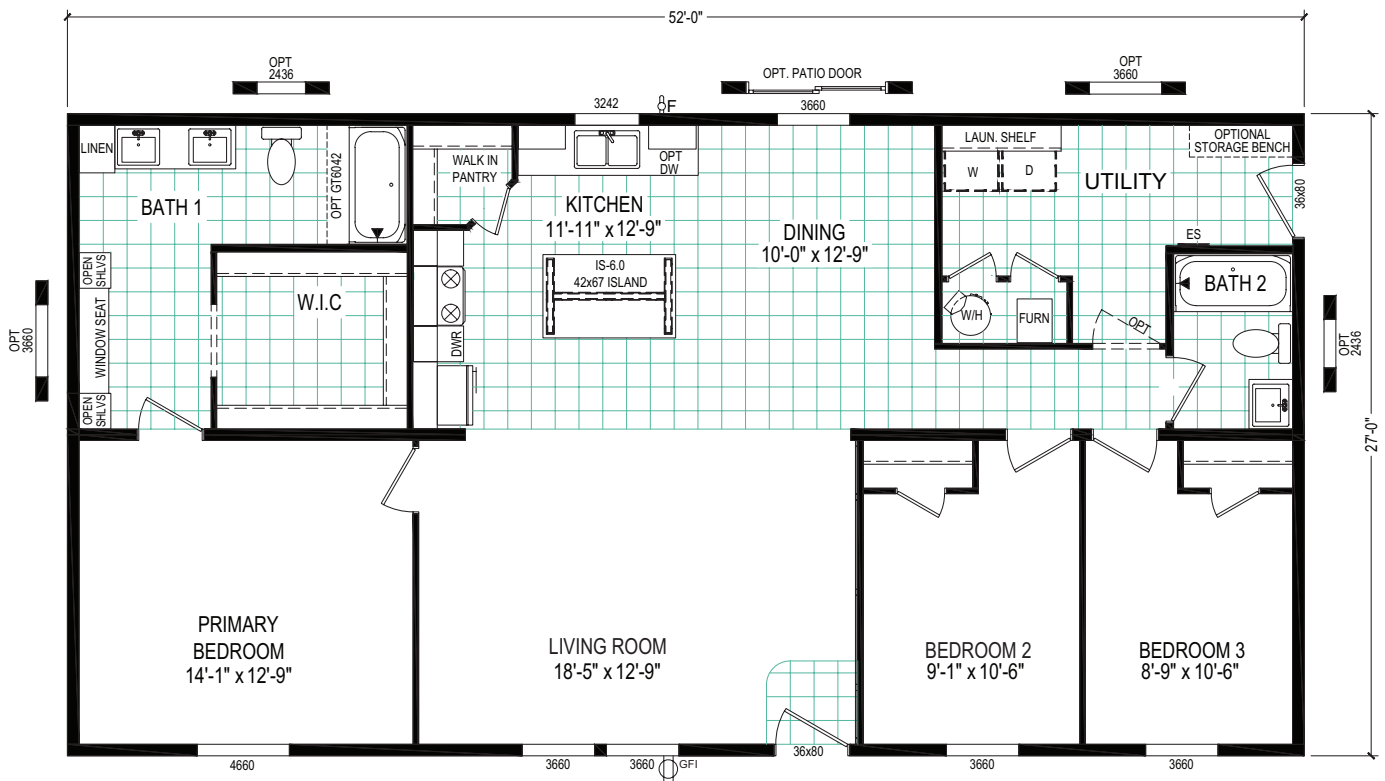
PULSE COLLECTION

Multi-Section

5228-E785

3 beds | 2 baths | 1,404 sq. ft. | 28x52

eBuilt™



PULSE COLLECTION



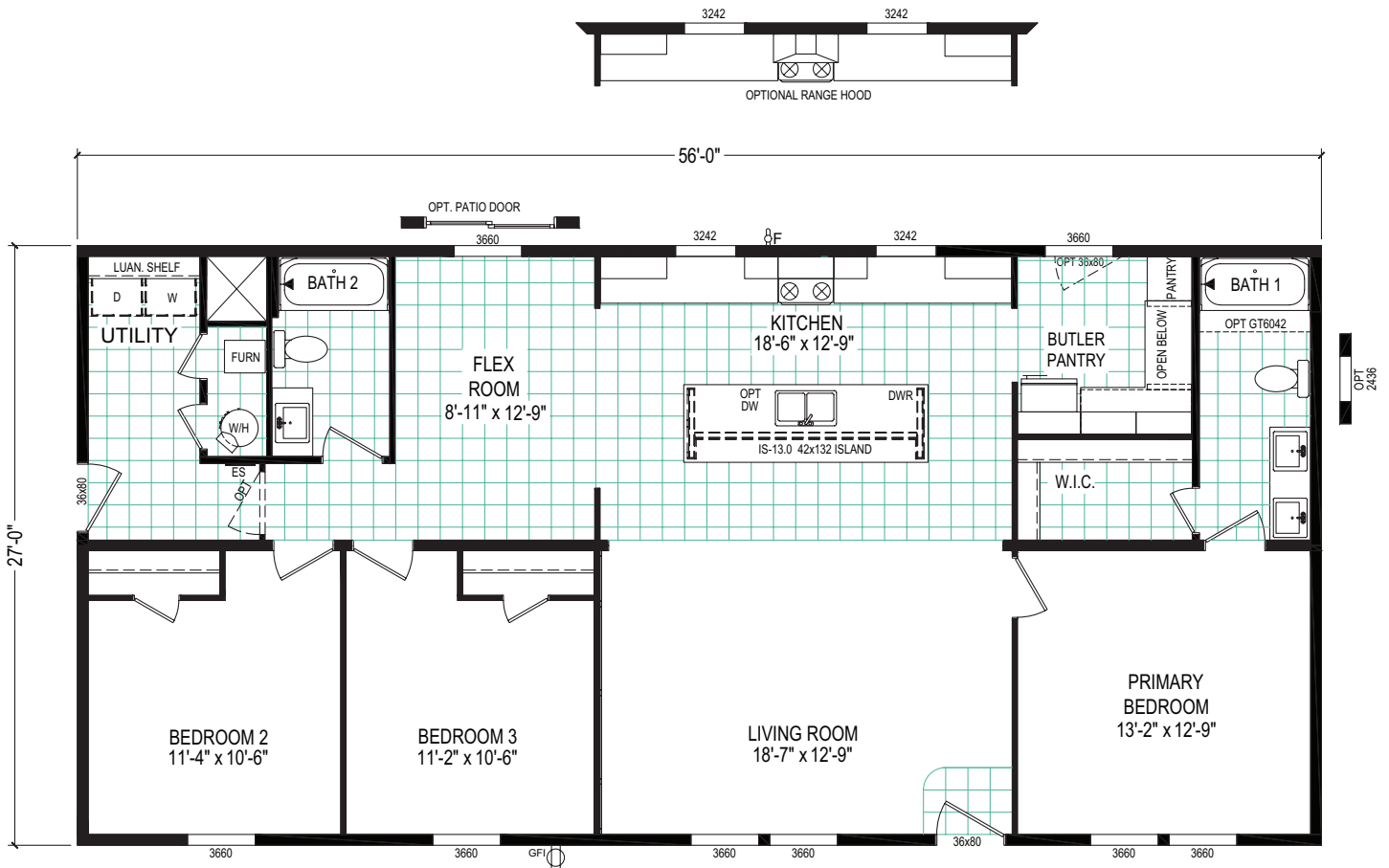
*Optional shutters shown in place of standard window lineals.

Multi-Section

5628-E786

3 beds | 2 baths | 1,512 sq. ft. | 28x56

eBuilt™



PULSE COLLECTION



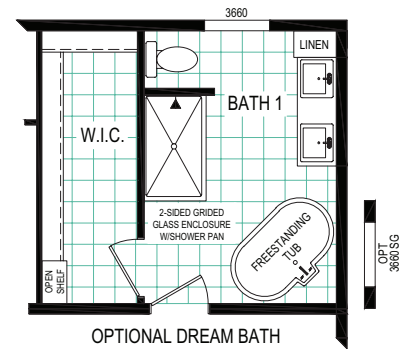
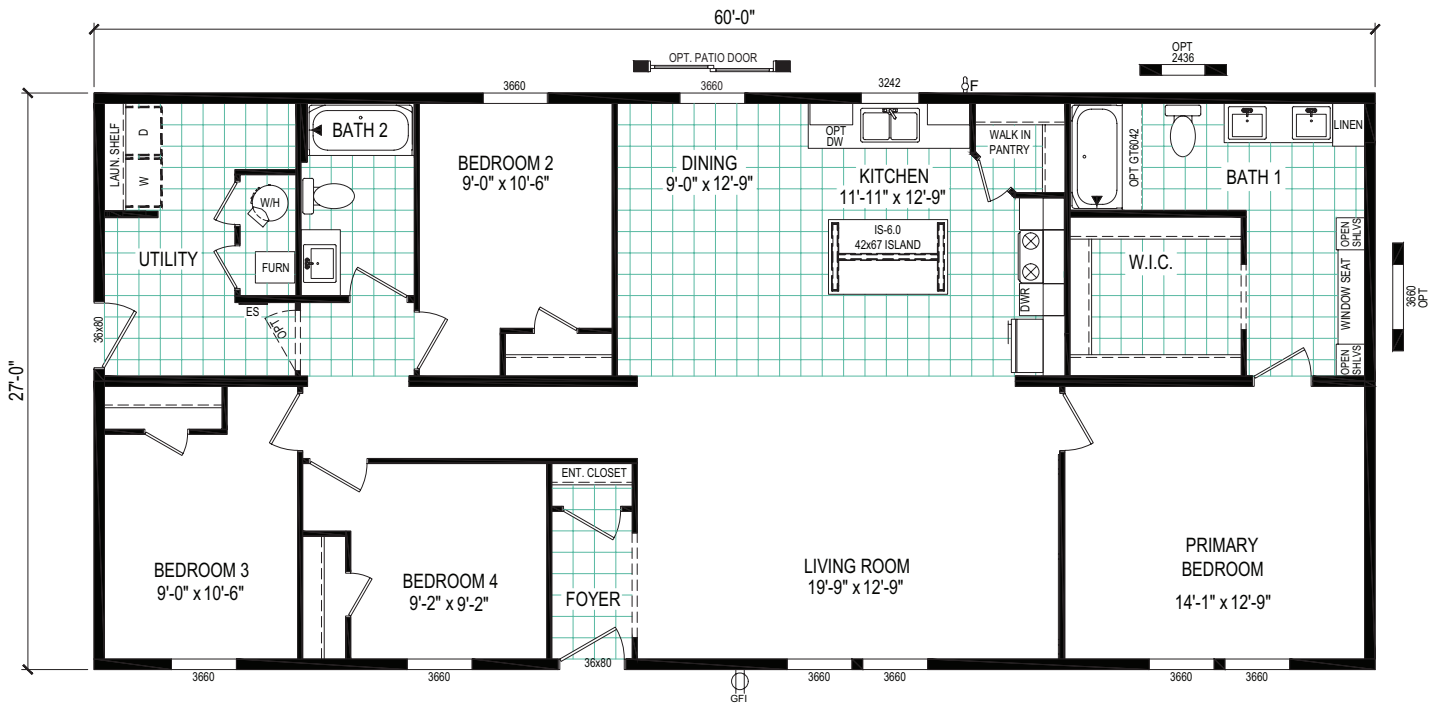
*Optional shutters shown in place of standard window lineals.

Multi-Section

6028-E788

4 beds | 2 baths | 1,620 sq. ft. | 28x60

eBuilt™



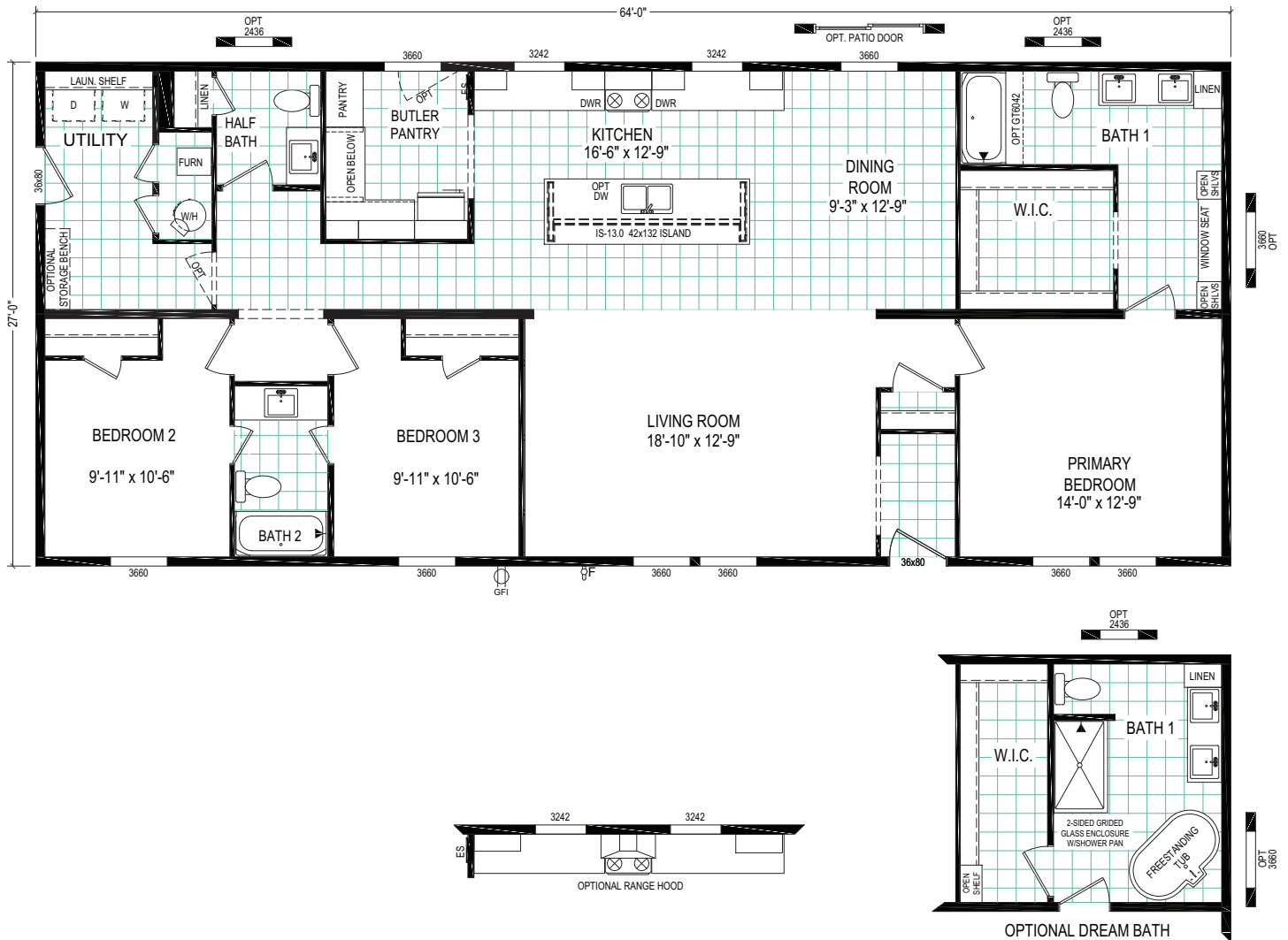
PULSE COLLECTION

Multi-Section

6428-E792

3 beds | 2.5 baths | 1,728 sq. ft. | 28x64

eBuilt™



PULSE COLLECTION



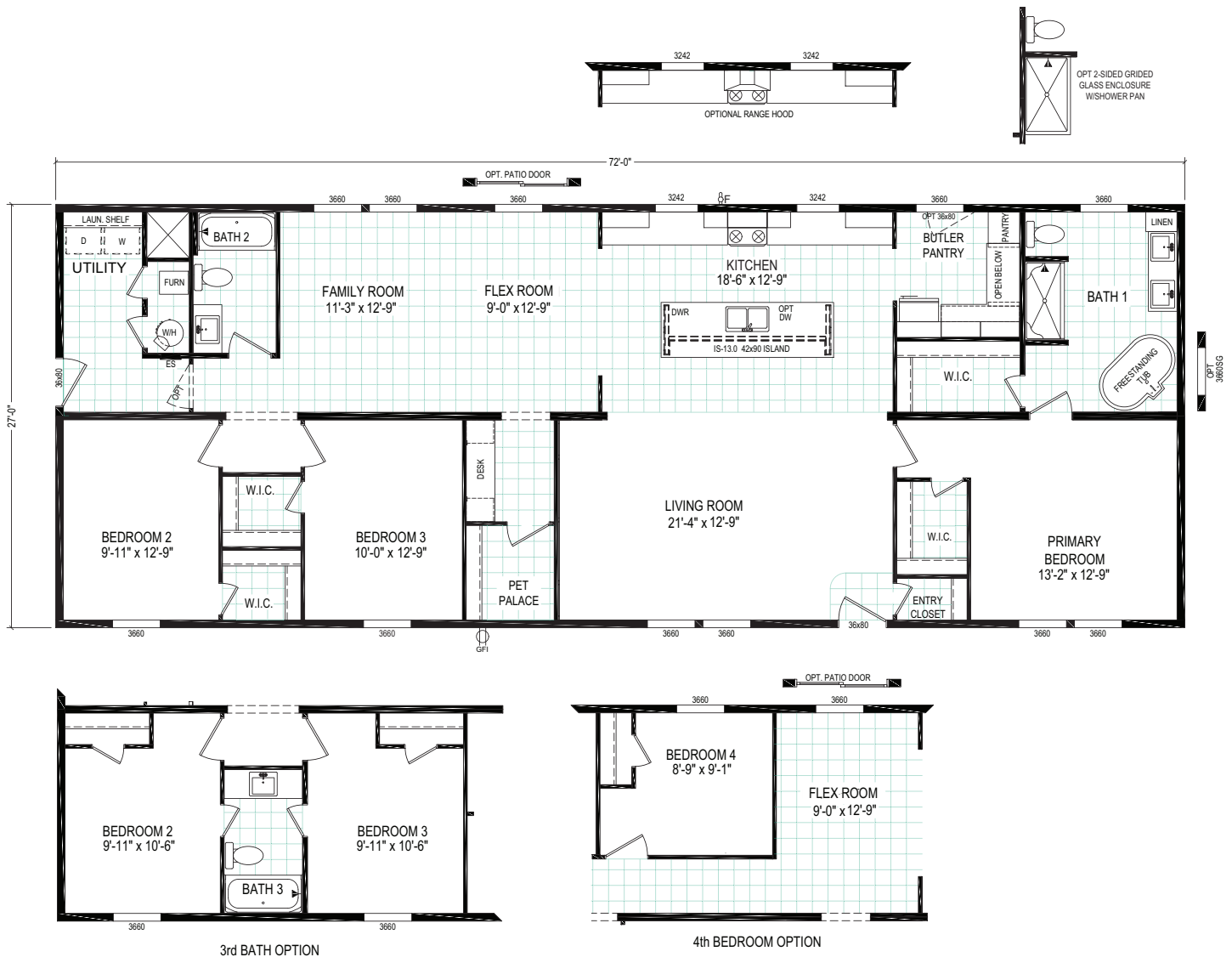
*Optional shutters shown in place of standard window lineals.

Multi-Section

*Shown w/ Optional 20' Dormer

7228-E789

3 beds | 2 baths | 1,944 sq. ft. | 28x72



Optional Hitch End Elevations

Single Section



Package A



Package B



Package C



Package D



Package E

Size of Hitch End window will be determined by floor plan layout.

Note: Exterior light fixtures pictured on Hitch End Elevations are optional.

*Optional shutters shown in place of standard window lineals.

Optional Hitch End Elevations

Sectionals



Elevation A



Elevation B

Hitch End Elevations are available where applicable per floor plan.

Note: Shutters pictured on Hitch End are optional.

**Optional shutters shown in place of standard window lineals.*

Optional Dormers



6' Dormer (Only Available on Single Section Floorplans)

Shown with Optional Hitch End Exterior "E"



10' Dormer



20' Dormer (Not Available on 24' Floorplans)

*Note: Available where applicable per floor plan
Optional shutters shown in place of standard window lineals.

Elevation and Color Options

Single Section



Elevation Package #2 (H.E.-A)

**Shown in the Color Palette #7*



UPGRADE Elevation Package #1 (H.E.-A)

**Shown in the Color Palette #7*



Elevation Package #3 (H.E.-B)

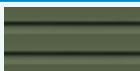

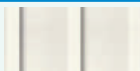

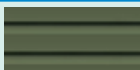
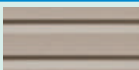
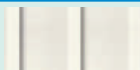
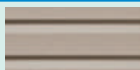
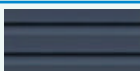
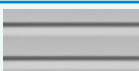
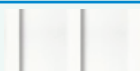
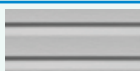
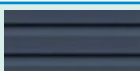
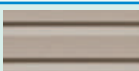
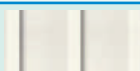
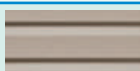
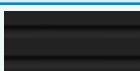
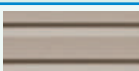
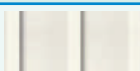
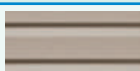
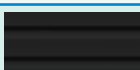
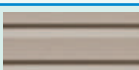
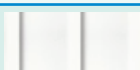
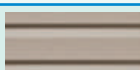
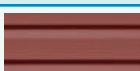
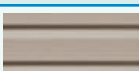
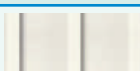
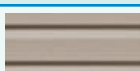
**Shown in the Color Palette #7*



UPGRADE Elevation Package #4 (H.E.-B)

**Shown in the Color Palette #7*

Available Color Palettes

Palette #	Front Door/HE Surround (Siding)	Lower Wainscot (Siding)	Upper Wainscot (Board & Batten)	Remaining Body of Home (Siding)
1	 Palm	 Cypress	 Mist	 Cypress
2	 Palm	 Clay	 Mist	 Clay
3	 Bayou	 Flint	 White	 Flint
4	 Bayou	 Clay	 Mist	 Clay
5	 Shadow	 Clay	 Mist	 Clay
6	 Shadow	 Clay	 White	 Clay
7	 Hampton Red	 Clay	 Mist	 Clay

Elevation and Color Options

Sectionals



Elevation Package A

**Shown in the Upgrade Color Palette #4*



Elevation Package B

**Shown in the Upgrade Color Palette #4*

Standard Color Palettes

Palette #	Lower Wainscot	Upper Wainscot	Board & Batten	Remaining Body of Home
1	Flint	White	Grey	Flint
2	Flint	White	White	Flint
3	Clay	Mist	White	Clay
4	Clay	White	White	Clay
5	Cypress	Mist	White	Cypress
6	Cypress	White	White	Cypress

Upgrade Color Palettes

Palette #	Lower Wainscot	Upper Wainscot	Board & Batten	Remaining Body of Home
1	Bayou	Flint	White	Flint
2	Bayou	Clay	Mist	Clay
3	Shadow	Clay	Mist	Clay
4	Shadow	Mist	White	Mist
5	Palm	Clay	Mist	Clay
6	Palm	Mist	White	Mist

eBuilt™

**A complete list of
our energy-saving
standard features
inside!**

PULSE

COLLECTION

Clayton
wakarusa

**66700 S.R. 19
Wakarusa, IN 46573**

**Phone: 574.862.4461 | Fax: 574.862.4559
www.claytonwakarusa.com**

The home series, floor plans, photos, renderings, specifications, features, pricing, materials and availability shown will vary by retailer and state, and are subject to change without notice. Construction and design specifications as well as features presented conceptual, therefore should not be used as actual construction data and may not be offered in all series or models.