



# Adrenaline

COLLECTION

Opening Doors to a Better Life

# Adrenaline

COLLECTION

## Table of Contents

### Standard Features

**3** Standard Features

### Single Section Models

- 4** 5616-4200 | 2 beds | 2 baths | 840 sq. ft. | 16x56
- 5** 6016-4200 | 2 beds | 2 baths | 900 sq. ft. | 16x60
- 6** 6016-4203 | 2 beds | 2 baths | 900 sq. ft. | 16x60
- 7** 6016-4204 | 2 beds | 2 baths | 900 sq. ft. | 16x60
- 8** 6616-4200 | 3 beds | 2 baths | 990 sq. ft. | 16x66
- 9** 6616-4203 | 3 beds | 2 baths | 990 sq. ft. | 16x66
- 10** 6616-4204 | 3 beds | 2 baths | 990 sq. ft. | 16x66
- 11** 7016-4200 | 3 beds | 2 baths | 1,050 sq. ft. | 16x70
- 12** 7016-4203 | 3 beds | 2 baths | 1,050 sq. ft. | 16x70
- 13** 7016-4204 | 3 beds | 2 baths | 1,050 sq. ft. | 16x70
- 14** 7216-4200 | 3 beds | 2 baths | 1,080 sq. ft. | 16x72
- 15** 7216-4203 | 3 beds | 2 baths | 1,080 sq. ft. | 16x72
- 16** 7216-4204 | 3 beds | 2 baths | 1,080 sq. ft. | 16x72
- 17** 7616-4200 | 3 beds | 2 baths | 1,140 sq. ft. | 16x76
- 18** 7616-4203 | 3 beds | 2 baths | 1,140 sq. ft. | 16x76
- 19** 7616-4204 | 3 beds | 2 baths | 1,140 sq. ft. | 16x76

### Multi-Section Models

- 20** 4828-E201 | 3 beds | 2 baths | 1,296 sq. ft. | 28x48
- 21** 5228-E201 | 3 beds | 2 baths | 1,404 sq. ft. | 28x52
- 22** 5628-E202 | 3 beds | 2 baths | 1,512 sq. ft. | 28x56

# Adrenaline

## COLLECTION

### STANDARD FEATURES

**eBuilt** ENERGY STAR® READY / DOE CERTIFIED ZERO ENERGY READY HOME

#### INTERIOR

- 2" Blinds Throughout
- Shaw® 25 oz. "New Wave" Carpet w/ 5# Rebound Pad
- Lux Congoleum No Wax Vinyl Flooring
- 8' Flat Ceilings T/O
- Stipple Ceiling Finish
- Wall Coverings 3/8" Wall Board
- Ventilated Wire Shelving in Closets
- LED Recessed Can Lights T/O
- LED Bulbs – Bath Vanity Lights
- Wire & Brace – Living Room
- 2" DuraCraft® Flat Ceiling Cove, Door & Window Casing T/O
- 32" 2-Panel White Interior Doors with 3 Mortised Hinges – Bedrooms & Baths
- High Pressure Countertops – T/O
- 4" Laminate Backsplash T/O
- Foyer Linoleum
- Door Chime
- Pfister® Metal Faucets – Kitchen & Baths

#### KITCHEN

- 30" Flat Panel DuraCraft® Overhead Cabinets
- Center Shelf Base Cabinets
- Shelf Over Refrigerator
- MDF Stiles
- GFCI Receptacles
- Metal Drawer Guides
- Bank of Drawers (4)
- Cabinet Doorknobs & Drawer Pulls
- Concealed Cabinet Door Hinges
- 8" Stainless Steel Double Bowl Kitchen Sink
- Frigidaire® Appliances
  - 30" Free-Standing Electric Range – Black
  - ENERGY STAR® 18 CF Frost Free Refrigerator – Black

#### BATHS

- 60" 1pc. Fiberglass Tub/Shower – Bath 1 & Bath 2
- Porcelain Square Sinks – Both Baths
- Elongated Commodes – Both Baths
- ENERGY STAR® Power Vent Bath Fan – Both Baths
- GFCI Receptacles
- 3-Bulb Strip Bar Vanity Lights – Both Baths

#### INSULATION

- Zone III Insulation
  - R-38 Blown Ceiling Insulation with Vapor Barrier
  - R-21 Fiberglass Insulation in Walls
  - R-33 Fiberglass Insulation in Floors – Between I-Beams
  - R-22 Fiberglass Insulation in Floors – Outside I-Beams

#### EXTERIOR

- Nominal 3/12 Roof Pitch - 28'
- Nominal 4/12 Roof Pitch - 16'
- OSB Exterior Sheathing
- 25 Year Fiberglass Shingle
- Ice and Water Shield
- Aluminum Fascia w/Vented Soffit
- 36"x80" Residential Fiberglass Front Door With Storm & Deadbolt – Storm Door Shipped Loose
- 36"x80" Residential Fiberglass Rear with Storm & Deadbolt – Storm Door Shipped Loose
- Exterior Light at Front & Rear Doors
- Double 4.5" Dutch Lap Vinyl Siding
- (1) Exterior Faucet – Per Print
- (1) Exterior Recept – Per Print
- Conduit Drop
- Solar Prep Conduit Drop
- LUX™ Argon Gas Low E White Vinyl SH Windows – No Grids
- 15" RSD Panel Shutters – Door Side & Hitch End – Singles
- 15" RSD Panel Shutters – Door Side - Sectionals
- Kwikset® Smart Key Locks & Hardware

#### UTILITIES

- Carrier® Electric High Efficiency Smart Comfort®
- Furnace with Door
- Sealed Duct System
- 200 AMP Service Panel Box
- In-Line / Perimeter Floor Registers
- High/Low Return Air System (Where Available)
- Rheem® 30AMP 40Gal. Hybrid Electric Heat Pump Water Heater with Door
- Water Heater Pan with Exterior Drain
- PEX Plumbing
- Wire & Plumb for Washer
- Wire & Vent for Dryer Installed
- Individual Water Shut Offs T/O
- Recessed Whole House Shut-Off
- Linked Smoke Detectors in Main Living Areas & All Bedrooms
- ecobee Smart Thermostat®

#### CONSTRUCTION

- Steel I-Beam Frame with Detachable Hitch
- 2"x6" Floor Joists – 16" O.C. Single Section & Sectionals
- 2"x6" Exterior Walls – 16" O.C.
- 19/32" T&G OSB Floor Decking Glued & Fastened
- 20 lb. Roof Load
- Roof Truss 24" O.C.
- 7/16" OSB Roof Sheathing
- Ridge Vent Roof Venting
- Metal In-Floor Crossovers – Sectionals
- Exterior Door Supports, Front & Rear Doors
- All Exterior Penetrations Sealed
- Whole House Ventilation Fan w/Switch
- Raised Siding – Skirting Application





# Adrenaline

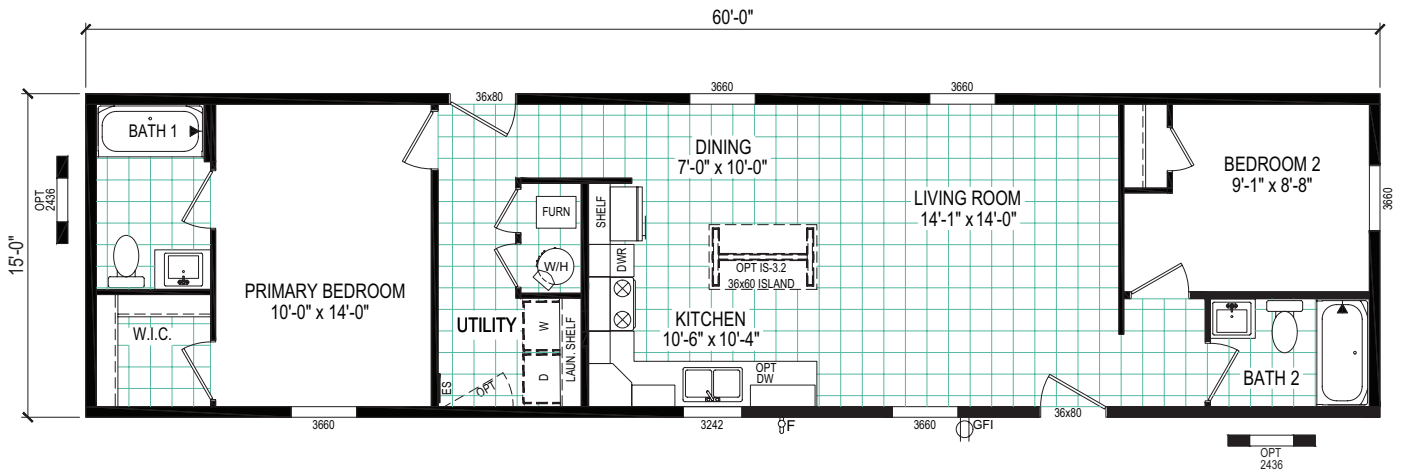
COLLECTION



## SINGLE SECTION

**6016-4200**

2 beds | 2 baths | 900 sq. ft. | 16x60



# Adrenaline

COLLECTION

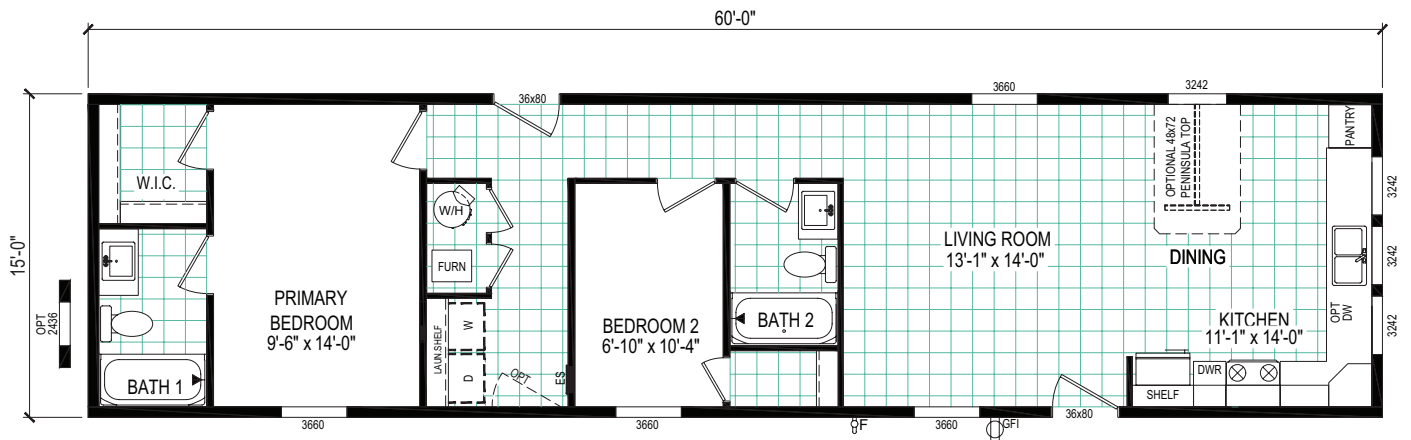


## SINGLE SECTION

**6016-4203**

2 beds | 2 baths | 900 sq. ft. | 16x60

**eBuilt™**



# Adrenaline

COLLECTION

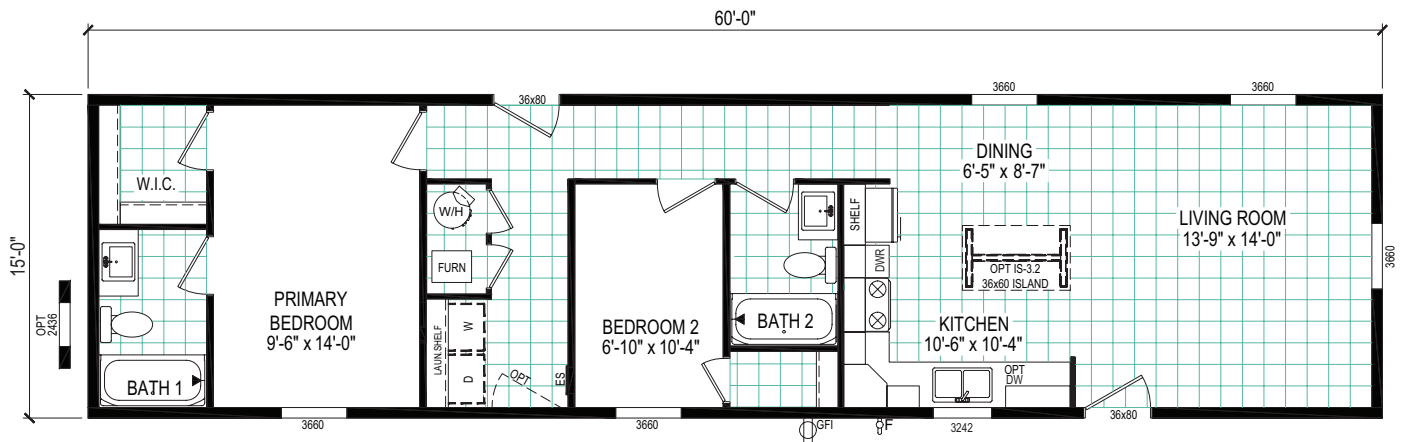


## SINGLE SECTION

**6016-4204**

2 beds | 2 baths | 900 sq. ft. | 16x60

**eBuilt™**



# Adrenaline

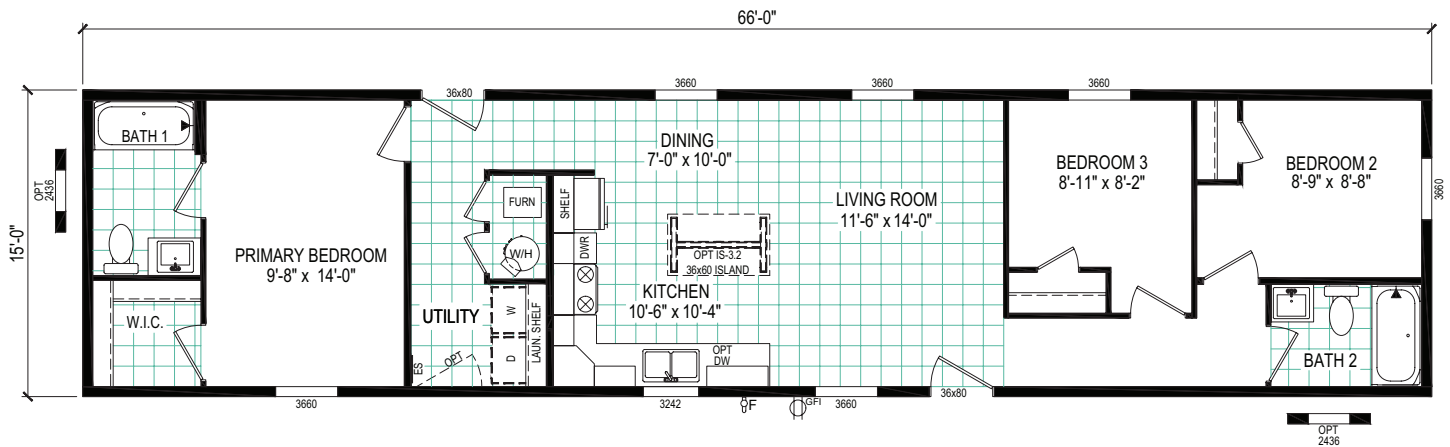
COLLECTION



## SINGLE SECTION

**6616-4200**

3 beds | 2 baths | 990 sq. ft. | 16x66





# Adrenaline

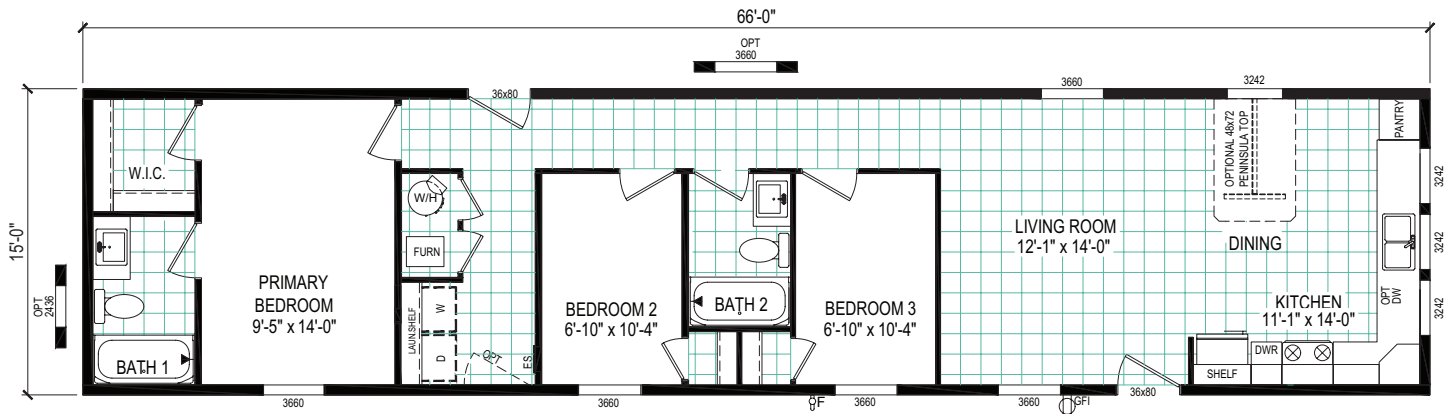
COLLECTION



## SINGLE SECTION

**6616-4203**

3 beds | 2 baths | 990 sq. ft. | 16x66



# Adrenaline

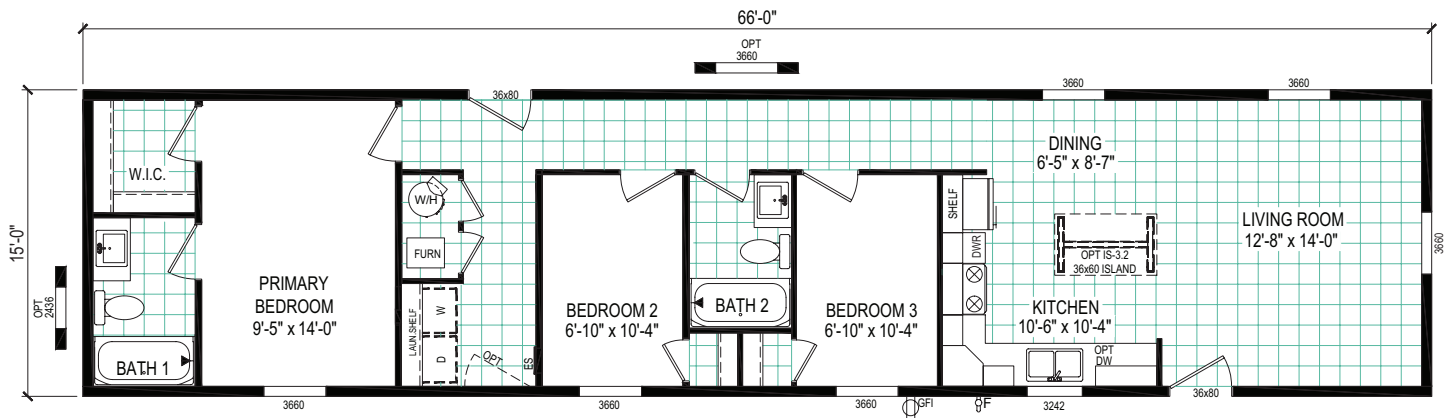
COLLECTION



## SINGLE SECTION

**6616-4204**

3 beds | 2 baths | 990 sq. ft. | 16x66



# Adrenaline

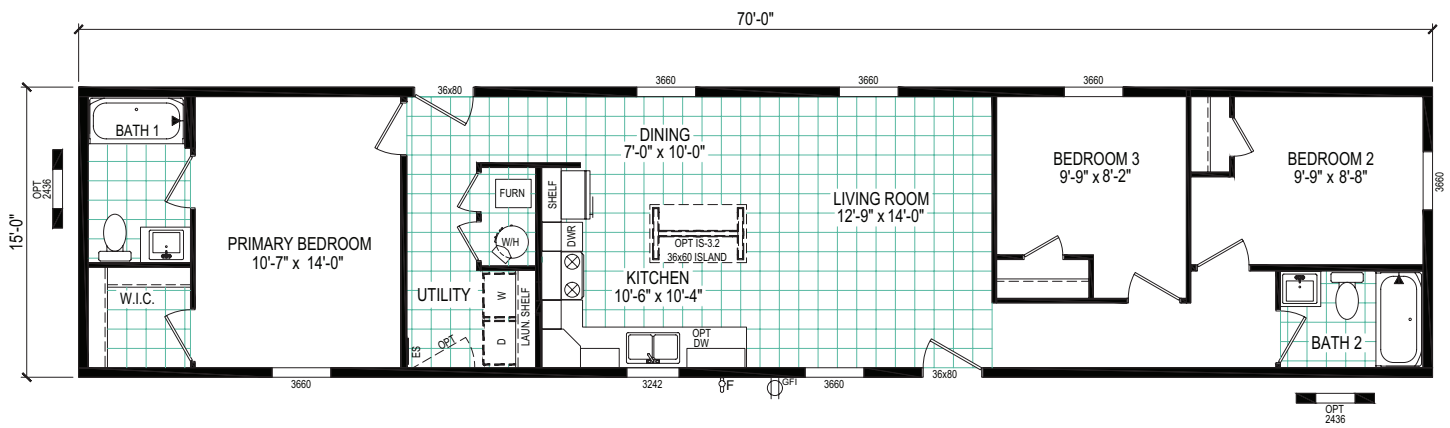
COLLECTION



## SINGLE SECTION

**7016-4200**

3 beds | 2 baths | 1,050 sq. ft. | 16x70



# Adrenaline

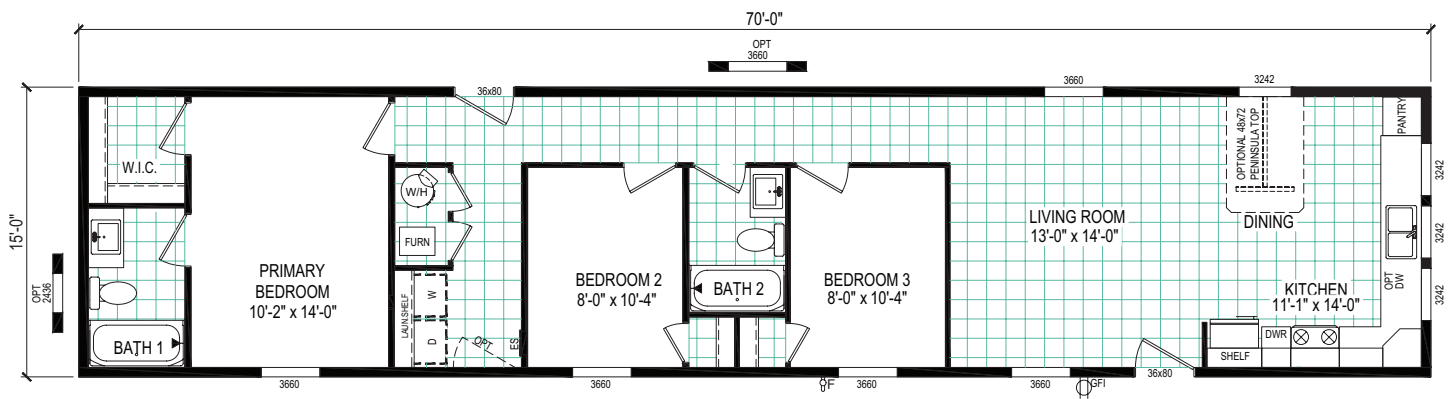
COLLECTION



## SINGLE SECTION

**7016-4203**

3 beds | 2 baths | 1,050 sq. ft. | 16x70





# Adrenaline

COLLECTION

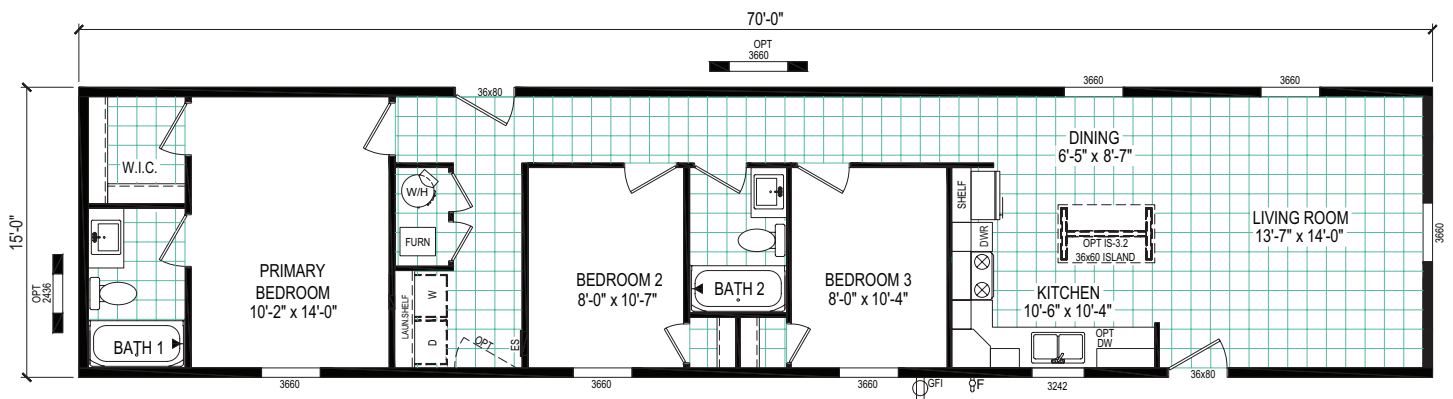


## SINGLE SECTION

**7016-4204**

3 beds | 2 baths | 1,050 sq. ft. | 16x70

**eBuilt™**



# Adrenaline

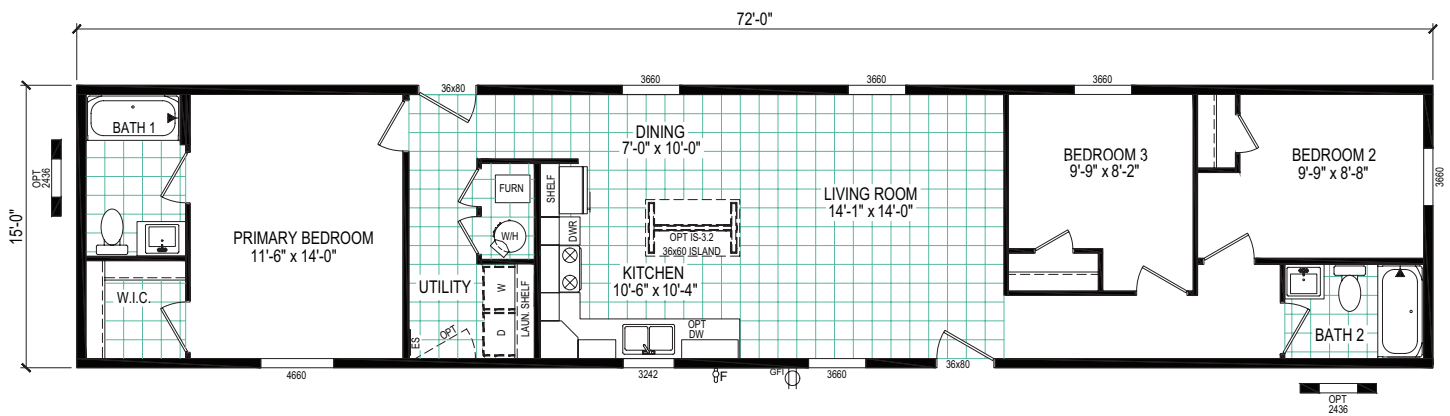
COLLECTION



## SINGLE SECTION

**7216-4200**

3 beds | 2 baths | 1,080 sq. ft. | 16x72



# Adrenaline

COLLECTION

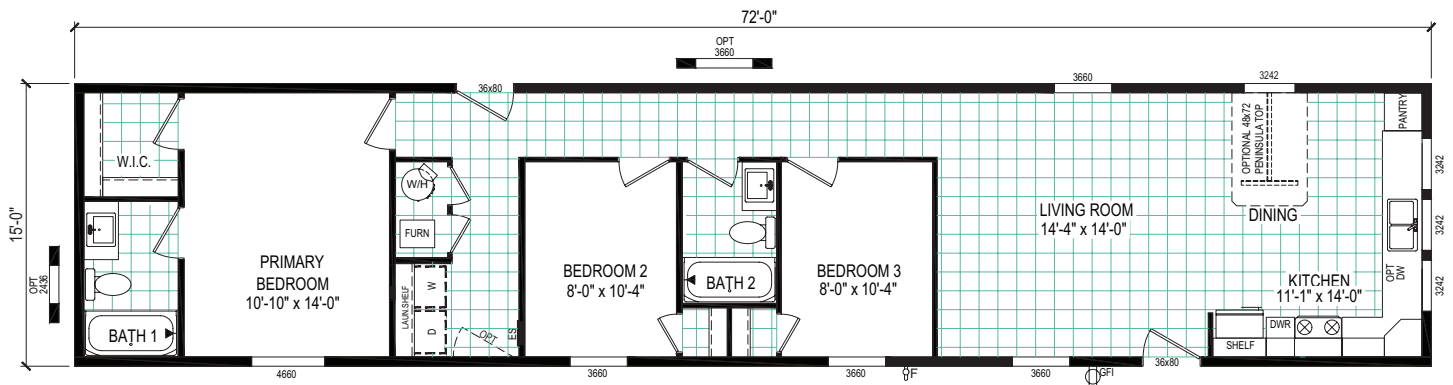


## SINGLE SECTION

**7216-4203**

3 beds | 2 baths | 1,080 sq. ft. | 16x72

**eBuilt™**



# Adrenaline

COLLECTION

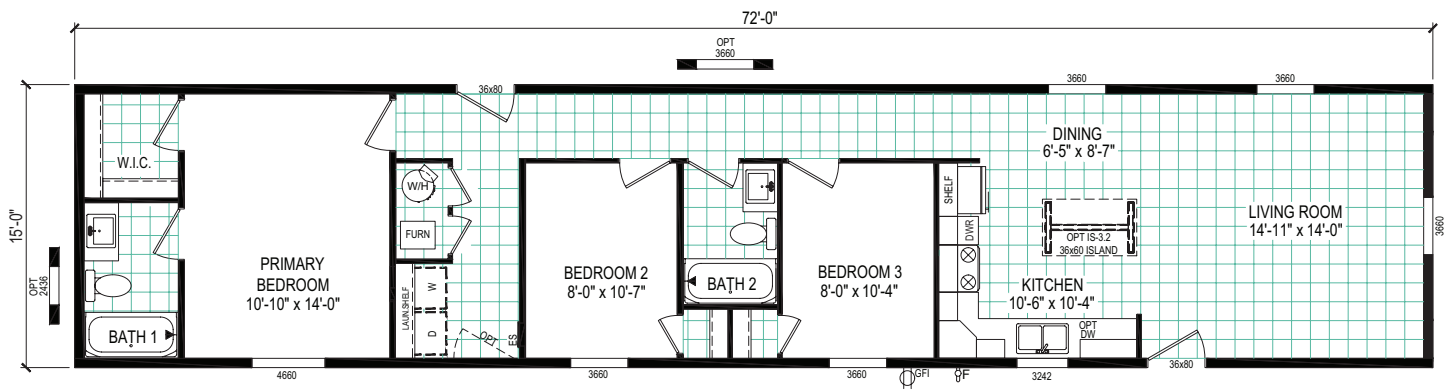


## SINGLE SECTION

**7216-4204**

3 beds | 2 baths | 1,080 sq. ft. | 16x72

**eBuilt™**





# Adrenaline

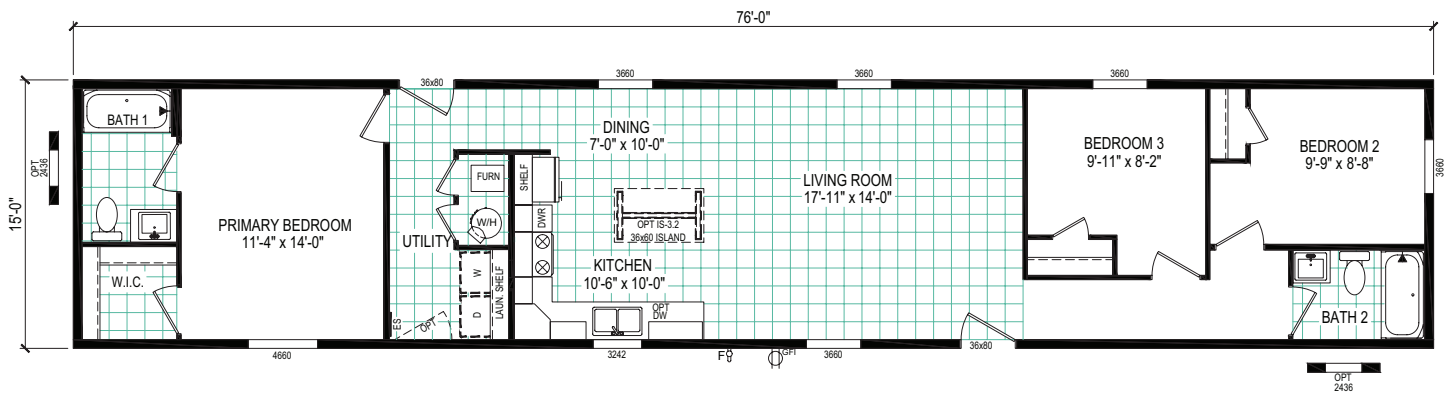
COLLECTION



## SINGLE SECTION

**7616-4200**

3 beds | 2 baths | 1,140 sq. ft. | 16x76



# Adrenaline

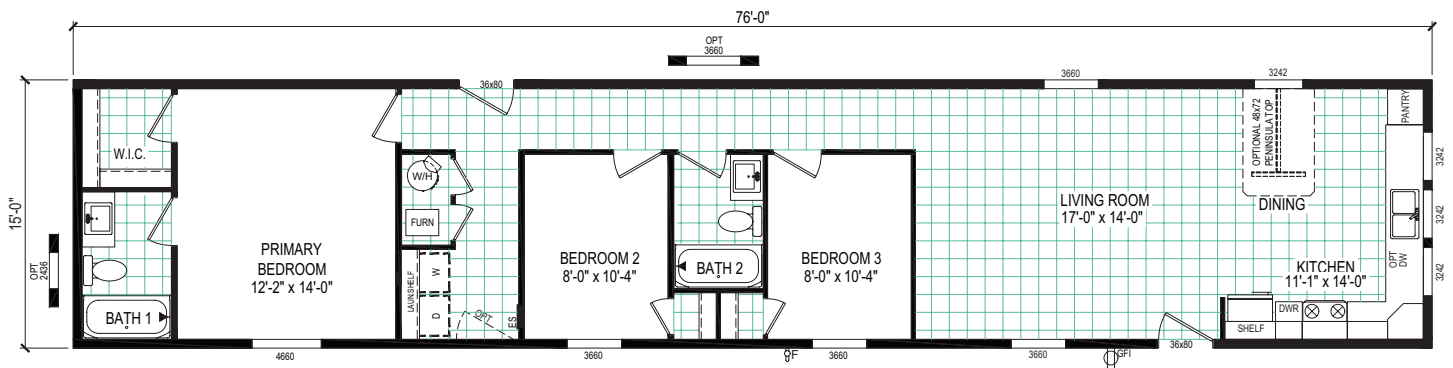
COLLECTION



## SINGLE SECTION

**7616-4203**

3 beds | 2 baths | 1,140 sq. ft. | 16x76



# Adrenaline

COLLECTION

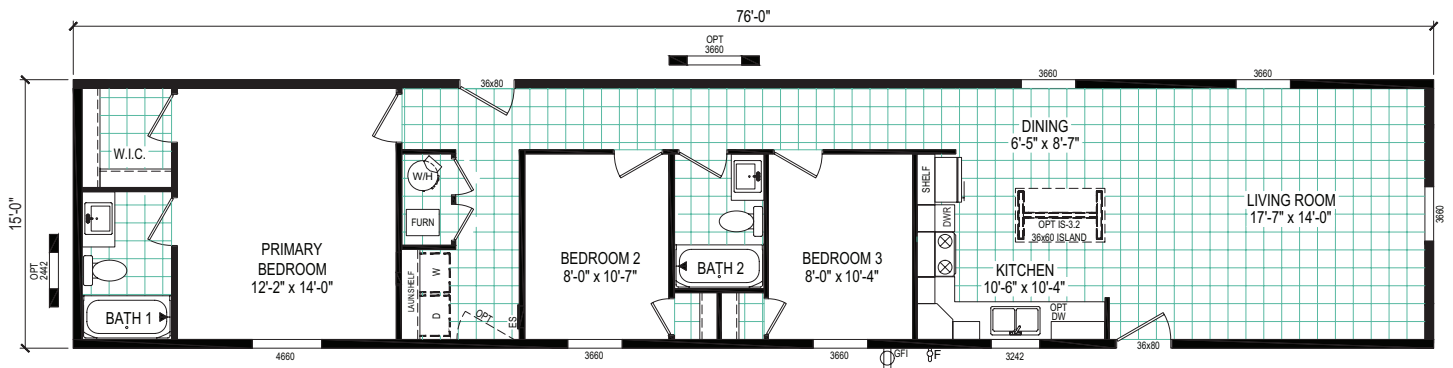


## SINGLE SECTION

**7616-4204**

3 beds | 2 baths | 1,140 sq. ft. | 16x76

**eBuilt™**



# Adrenaline

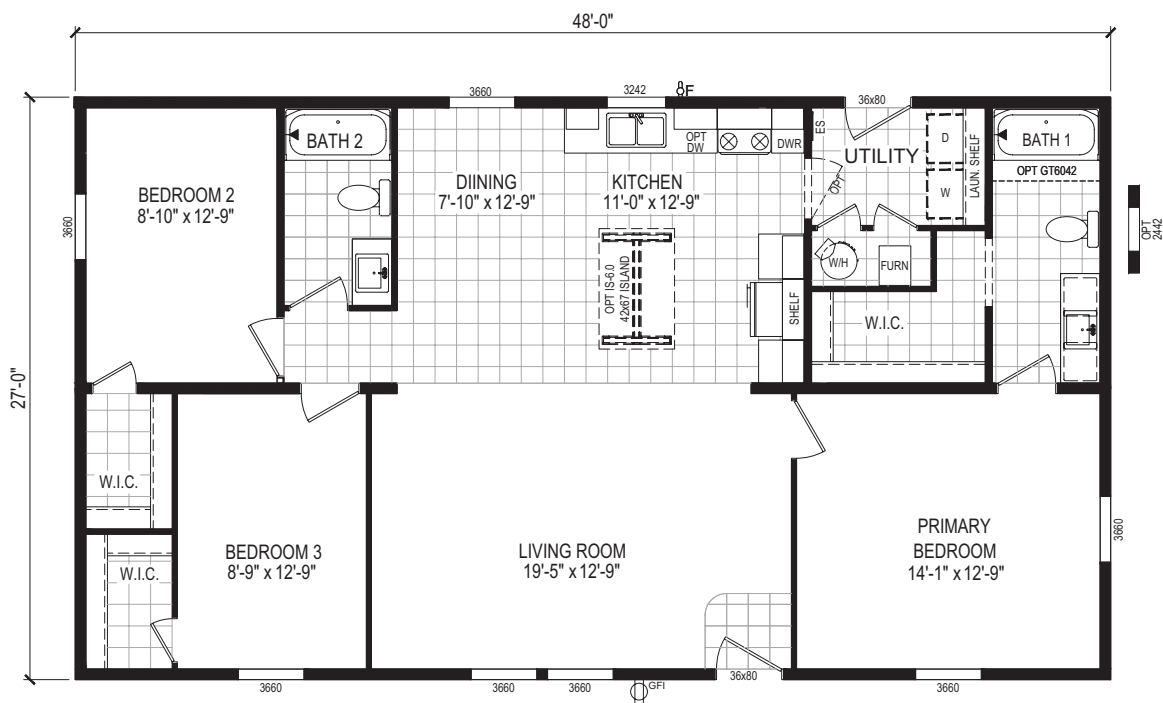
COLLECTION



## MULTI-SECTION

### 4828-E201

3 beds | 2 baths | 1,296 sq. ft. | 28x48





# Adrenaline

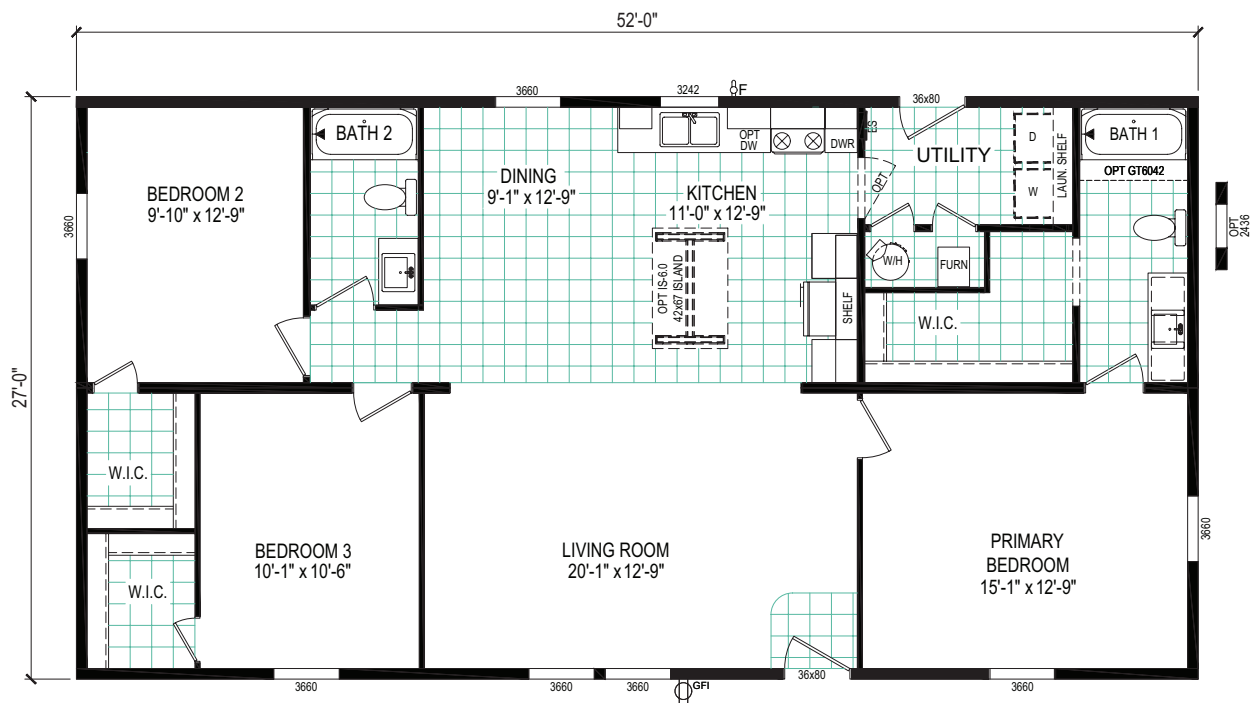
COLLECTION



## MULTI-SECTION

### 5228-E201

3 beds | 2 baths | 1,404 sq. ft. | 28x52



# Adrenaline

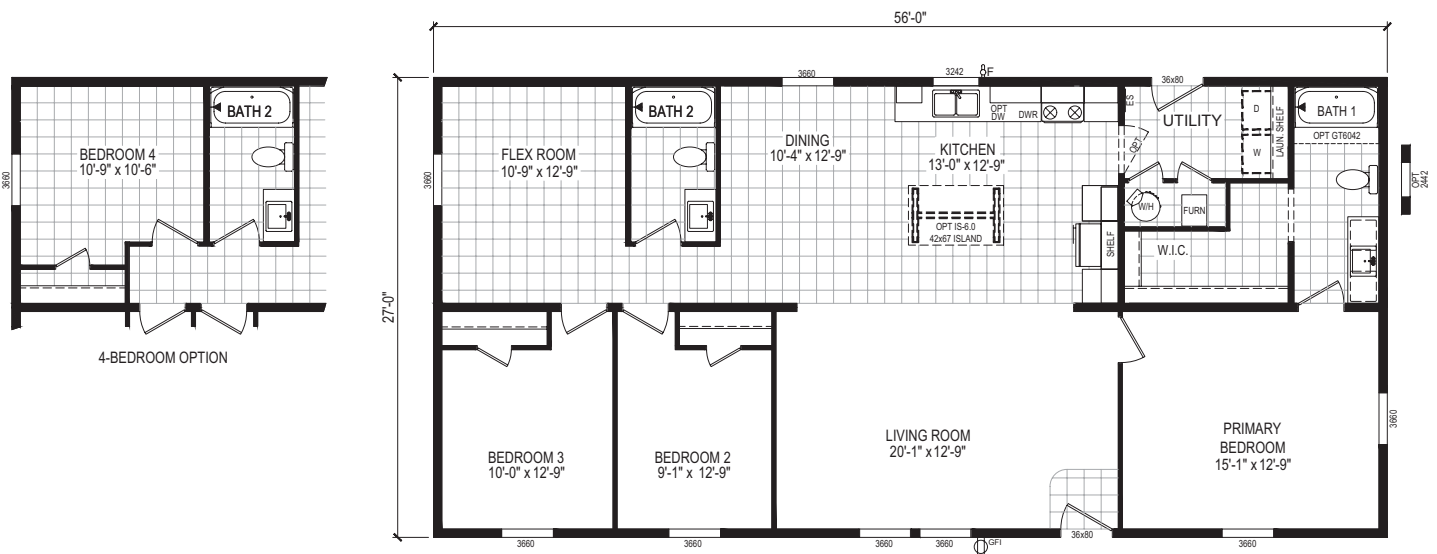
COLLECTION



## MULTI-SECTION

### 5628-E202

3 beds | 2 baths | 1,512 sq. ft. | 28x56





# Adrenaline

COLLECTION

**eBuilt™**

**A complete list of  
our energy-saving  
standard features  
inside!**

**Clayton**  
wakarusa

66700 S.R. 19  
Wakarusa, IN 46573

Phone: 574.862.4461 | Fax: 574.862.4559  
[www.claytonwakarusa.com](http://www.claytonwakarusa.com)

The home series, floor plans, photos, renderings, specifications, features, pricing, materials and availability shown will vary by retailer and state, and are subject to change without notice. Construction and design specifications as well as features presented conceptual, therefore should not be used as actual construction data and may not be offered in all series or models.