



PARAMOUNT

by REDMAN  HOMES.



Singlewide Homes



About Us

Located in the Amish country of Northern Indiana where pride and craftsmanship run deep, we are recognized today for offering some of the highest-quality manufactured and modular homes in the Midwest. It's a recognition achieved by consistently delivering more than our customers might expect.

- More innovative quality features.
- More home styles and flexible floor plan designs.
- More helpful customer service.
- And most of all, more home for your money.

Beyond just building you a house,

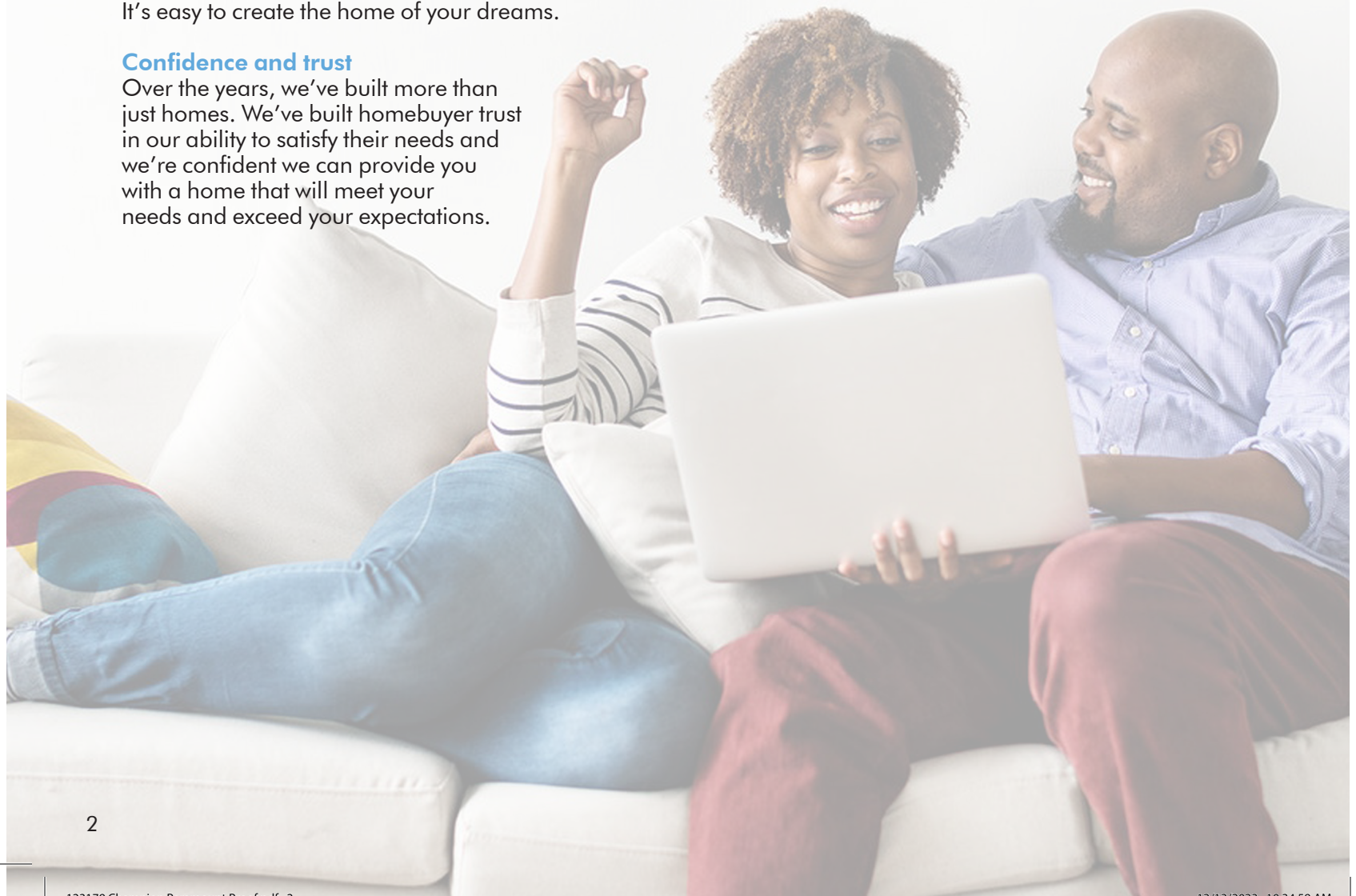
We're committed to providing you and your family with a home to make memories in that will last a lifetime. Somewhere you can feel secure. A place you can call your own. A home that fits your lifestyle and has your own personal touch. Whether you're an active young family constantly on the go or empty-nesters ready to simplify, just relax – we have a home that's right for you.

More choice, more freedom

Our vast selection of floor plans, color choices and options give you the design choices you want to create a plan you'll truly enjoy. It's easy to create the home of your dreams.

Confidence and trust

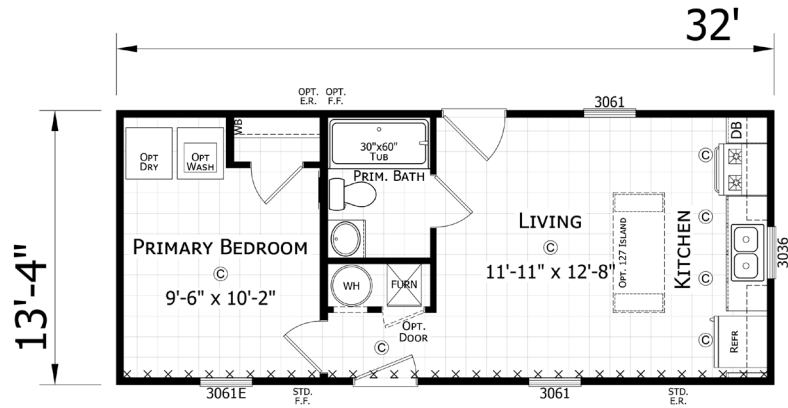
Over the years, we've built more than just homes. We've built homebuyer trust in our ability to satisfy their needs and we're confident we can provide you with a home that will meet your needs and exceed your expectations.



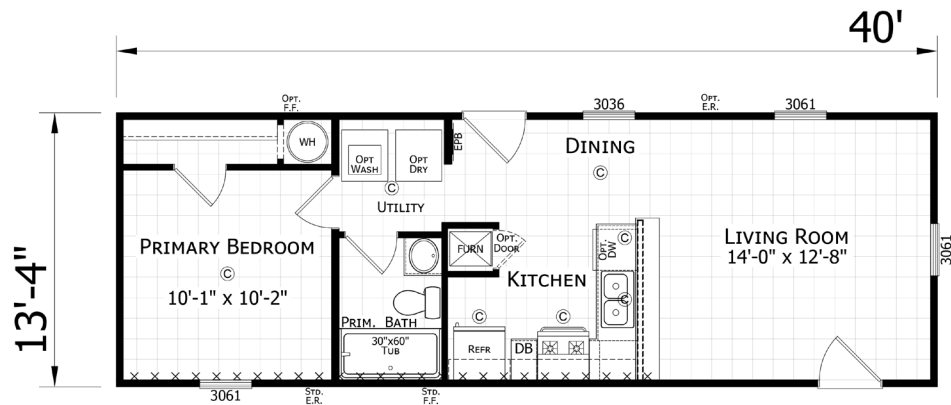
PARAMOUNT

14' Singlewide Homes

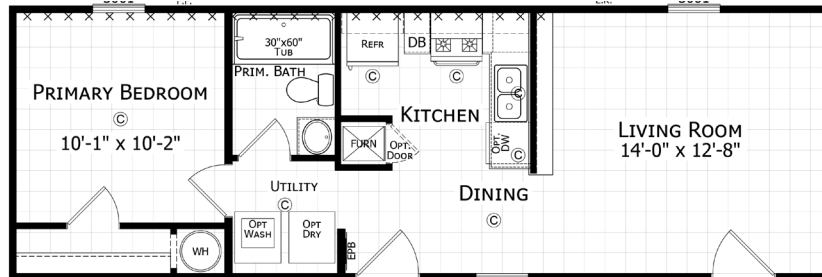
1432H11214 ■ 1 BED • 1 BATH • 427 SQ. FT.



1440H11065 ■ 1 BED • 1 BATH • 533 SQ. FT.



Opt.
Reverse
Aisle



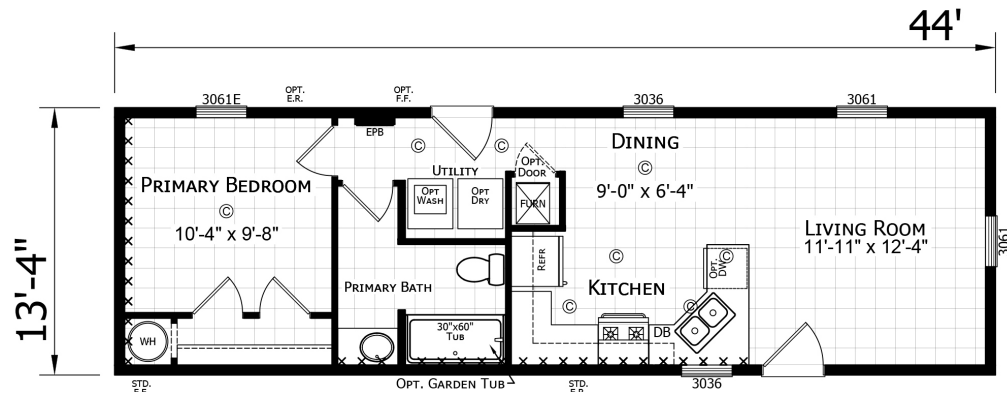
Entry doors are located on the front of the house in the reverse aisle option.

NOTE: Reverse Aisle Option is not shown for each floor plan throughout this brochure but is available for most homes.

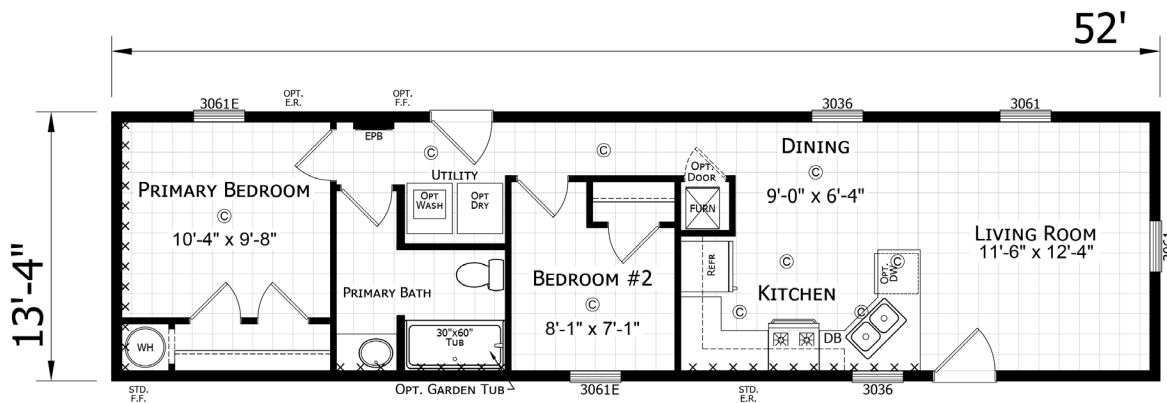
PARAMOUNT

14' Singlewide Homes

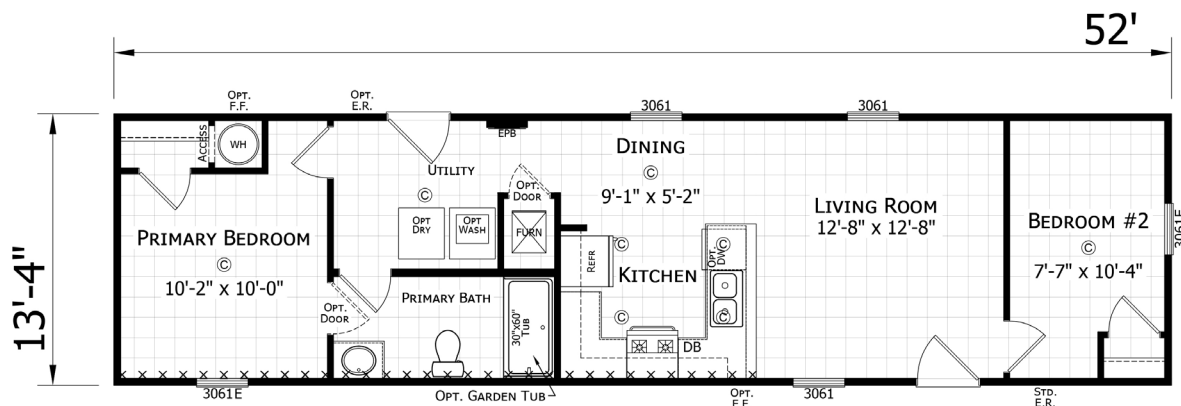
1444H11023 ■ 1 BED • 1 BATH • 587 SQ. FT.



1452H21023 ■ 2 BED • 1 BATH • 693 SQ. FT.



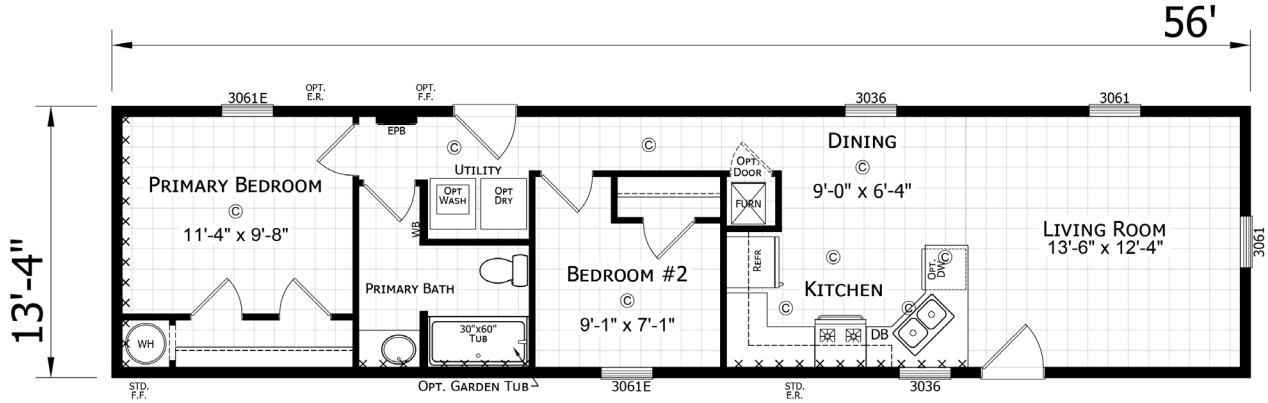
1452H21081 ■ 2 BED • 1 BATH • 693 SQ. FT.



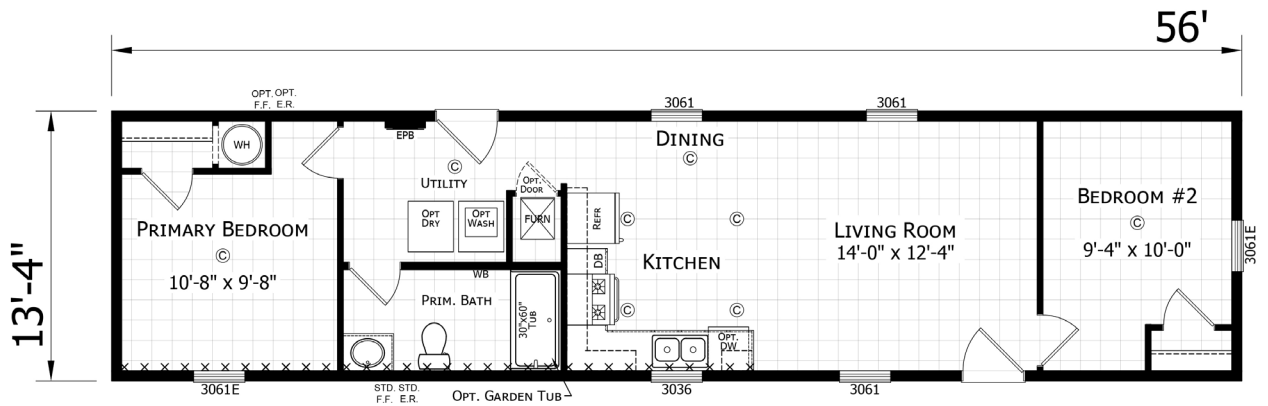
PARAMOUNT

14' Singlewide Homes

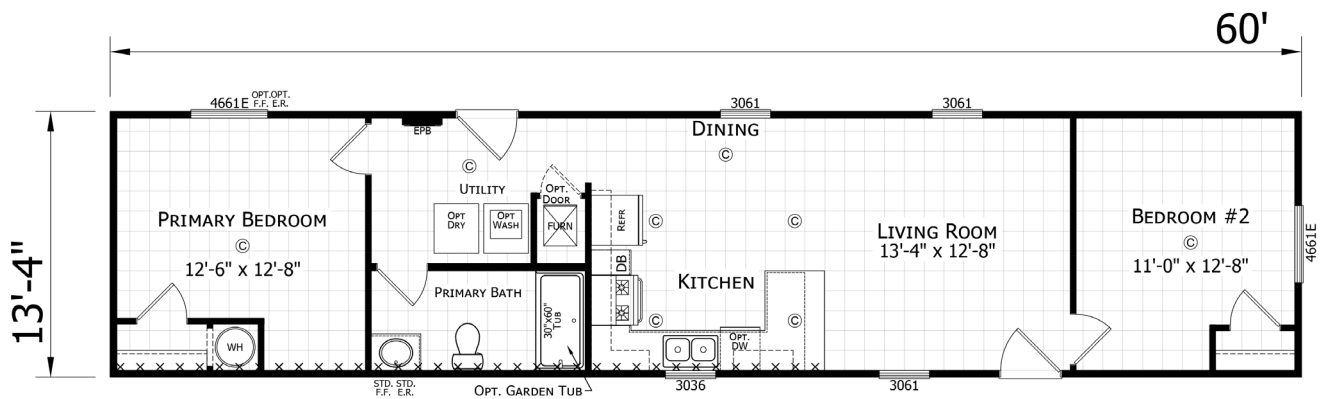
1456H21023 ■ 2 BED • 1 BATH • 747 SQ. FT.



1456H21030 ■ 2 BED • 1 BATH • 747 SQ. FT.



1460H21216 ■ 2 BED • 1 BATH • 800 SQ. FT.

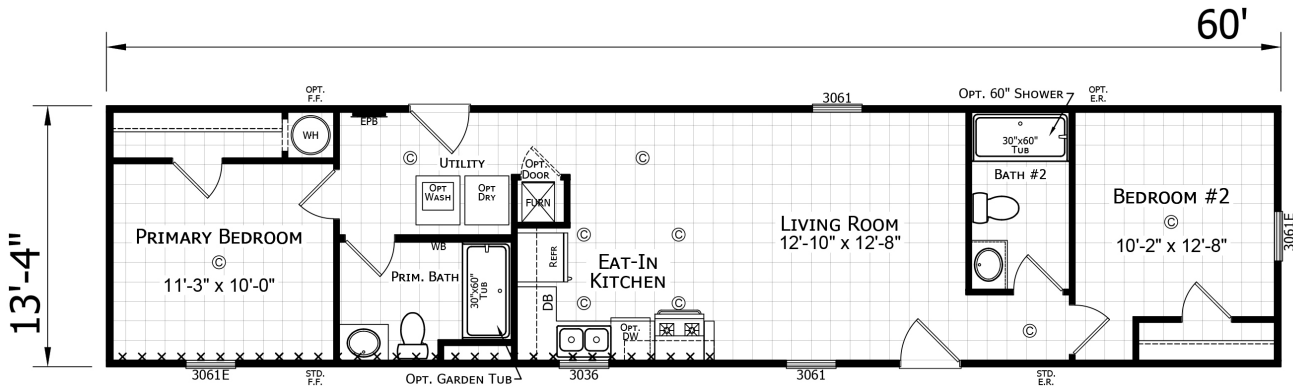


Optional reverse aisle is available for most homes

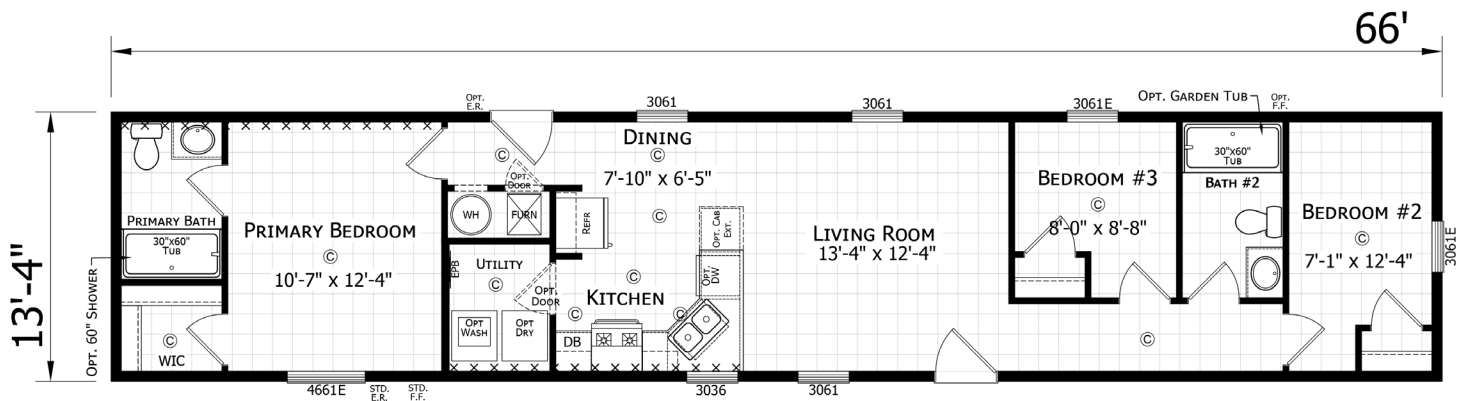
PARAMOUNT

14' Singlewide Homes

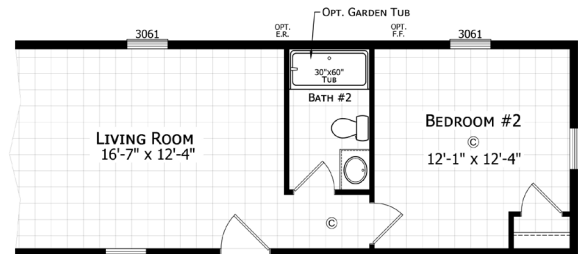
1460H22215 ■ 2 BED • 2 BATH • 800 SQ. FT.



1466H32082 ■ 3 BED • 2 BATH • 880 SQ. FT.



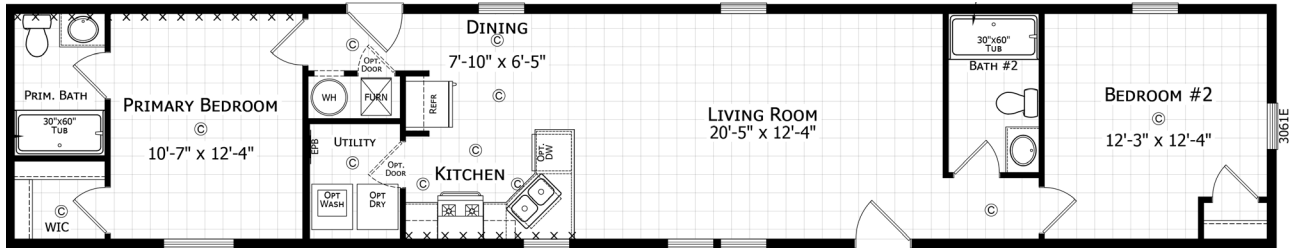
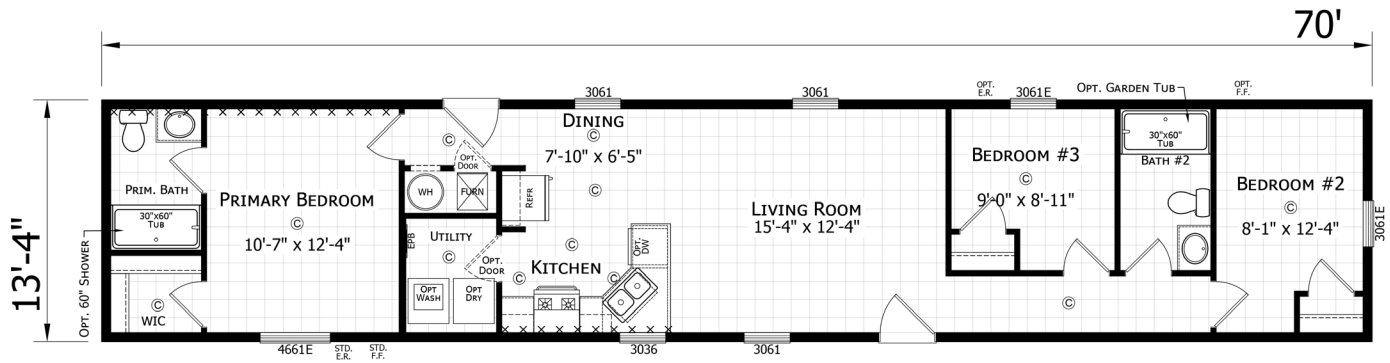
Opt.
2 Bedroom



PARAMOUNT

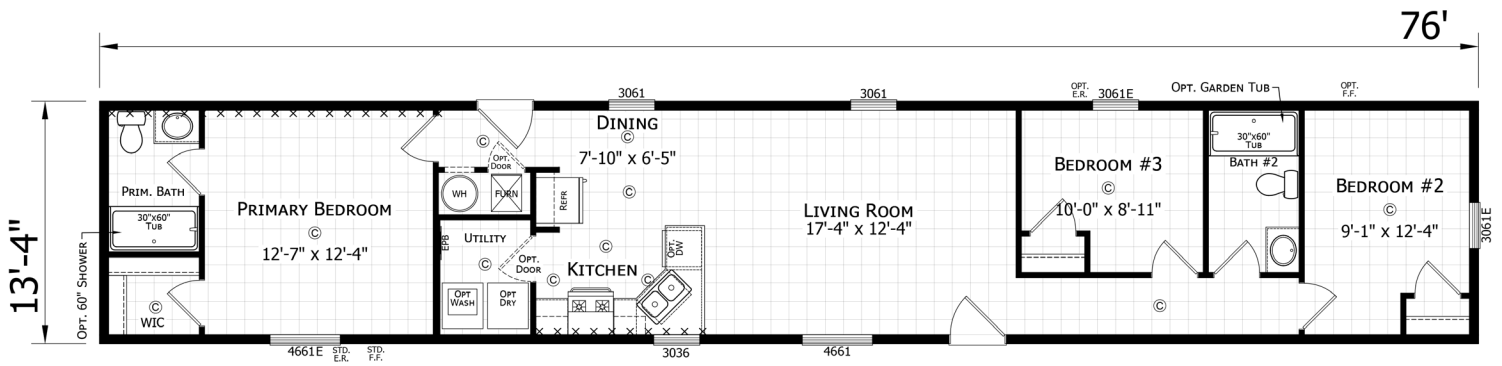
14' Singlewide Homes

1470H32082 ■ 3 BED • 2 BATH • 933 SQ. FT.

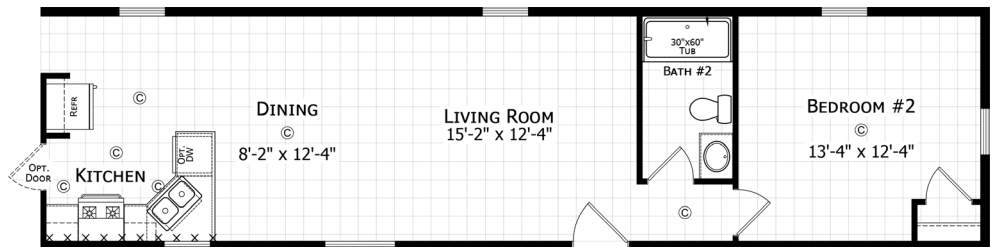


Opt. 2 Bedroom

1476H32082 ■ 3 BED • 2 BATH • 1013 SQ. FT.



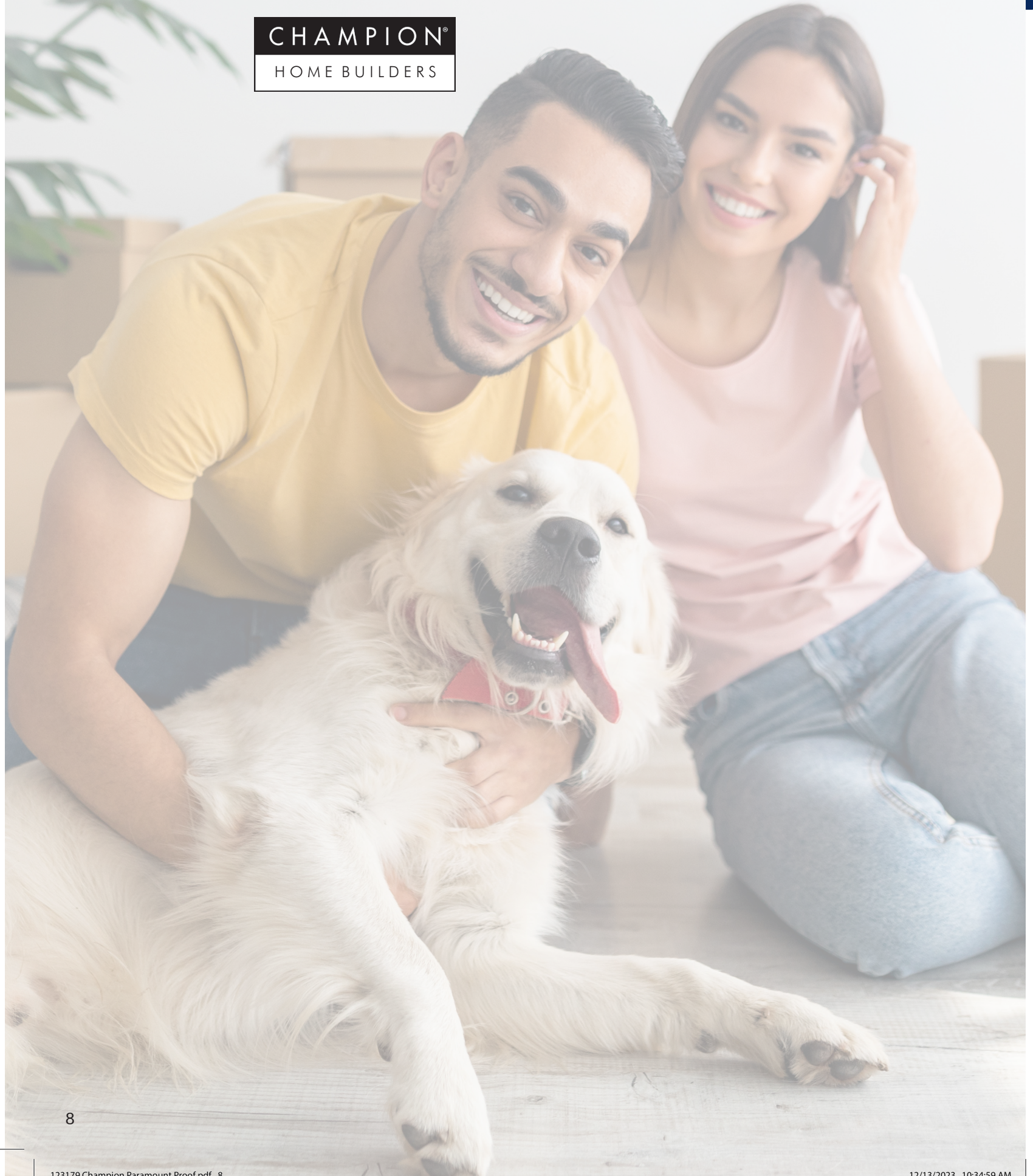
Opt.
2 Bedroom



Optional reverse aisle is available for most homes

REDMAN  HOMES®

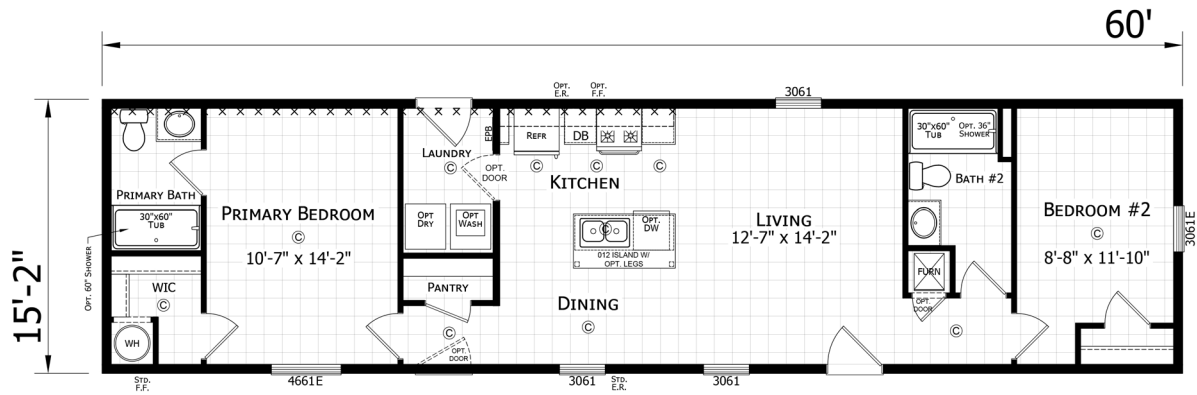
CHAMPION®
HOME BUILDERS



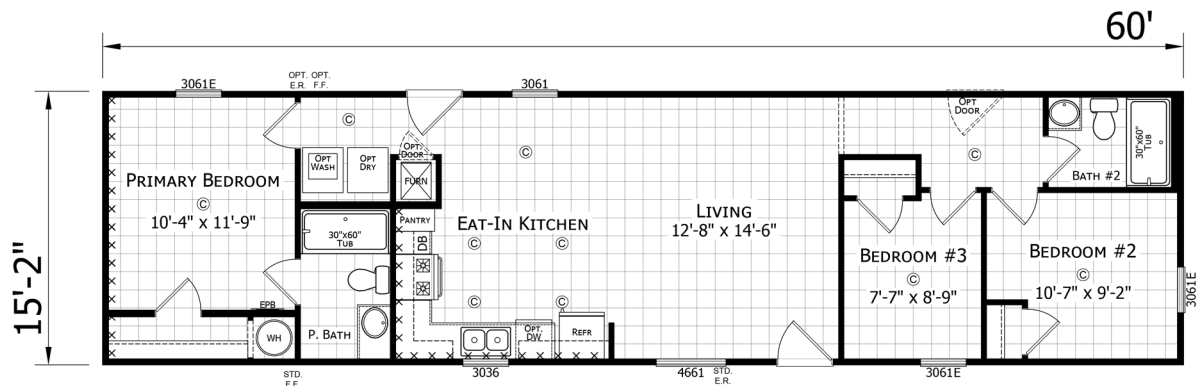
PARAMOUNT

16' Singlewide Homes

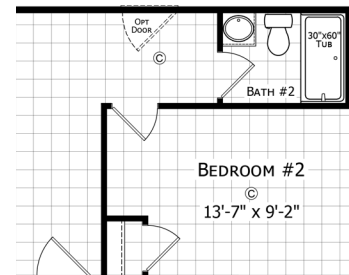
1660H22212 ■ 2 BED • 2 BATH • 910 SQ. FT.



1660H32206 ■ 3 BED • 2 BATH • 910 SQ. FT.



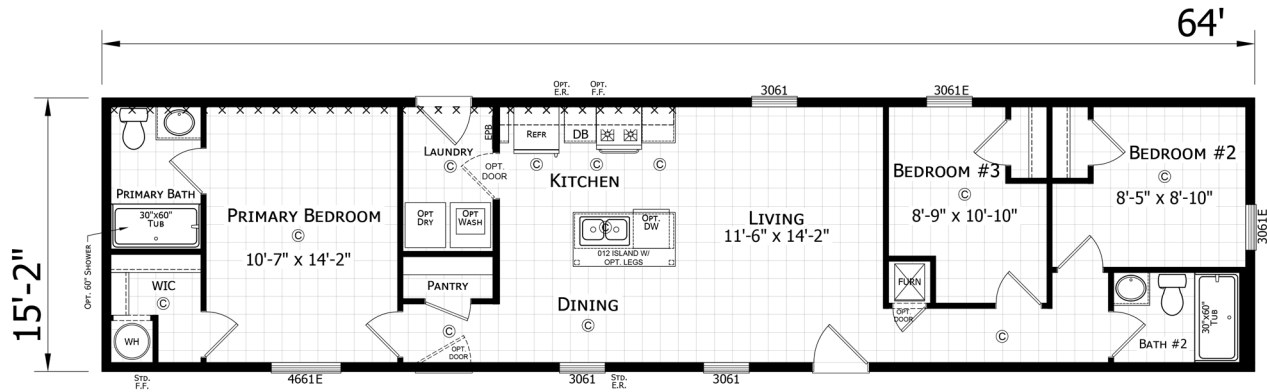
Opt.
2 Bedroom



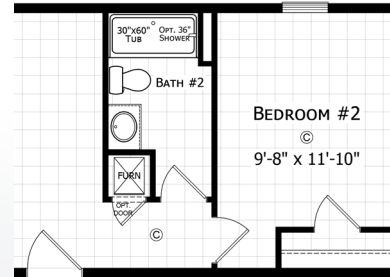
PARAMOUNT

16' Singlewide Homes

1664H32212 ■ 3 BED • 2 BATH • 971 SQ. FT.



Opt.
2 Bedroom

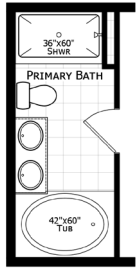
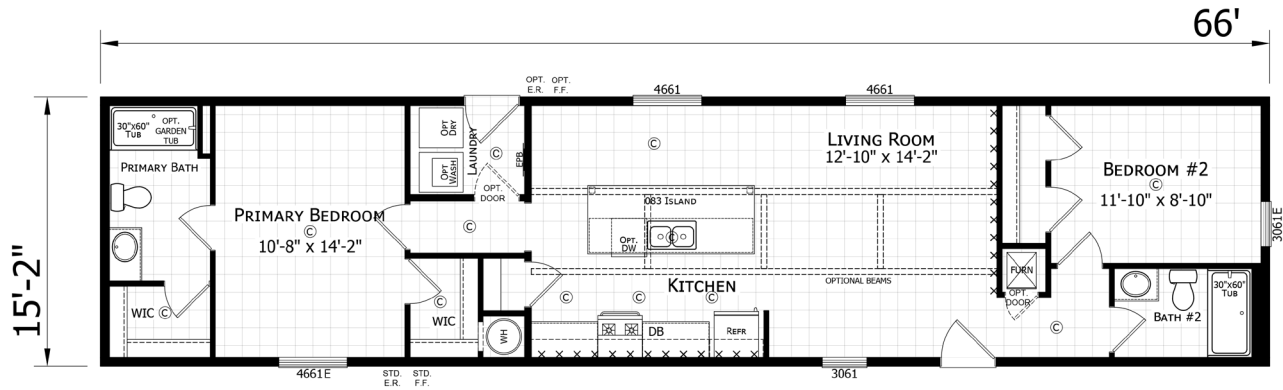


Optional reverse aisle is available for most homes

PARAMOUNT

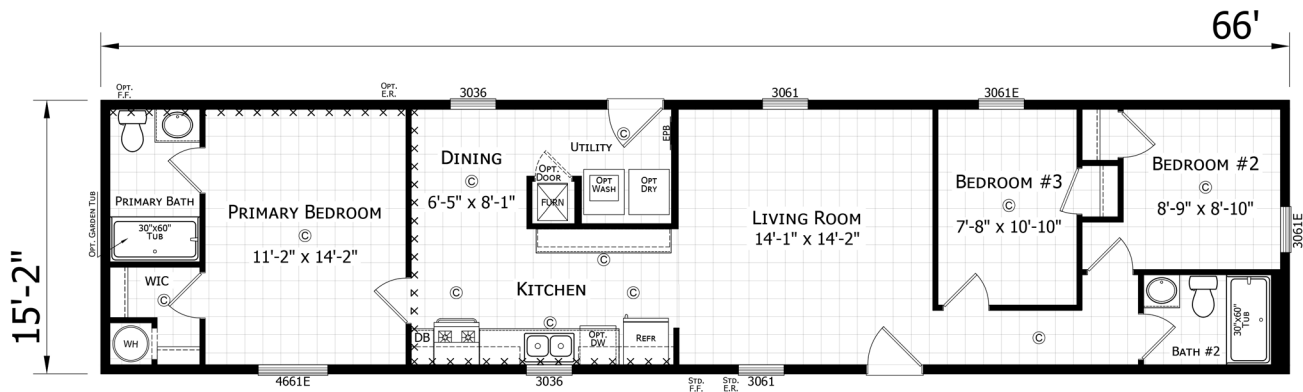
16' Singlewide Homes

1666H22091 ■ 2 BED • 2 BATH • 1001 SQ. FT.

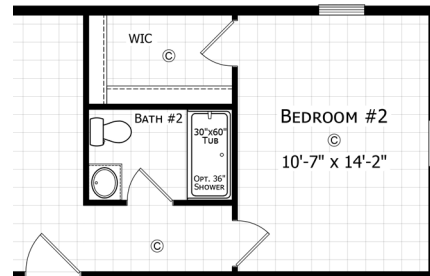


Opt.
Primary
Bath

1666H32085 ■ 3 BED • 2 BATH • 1001 SQ. FT.



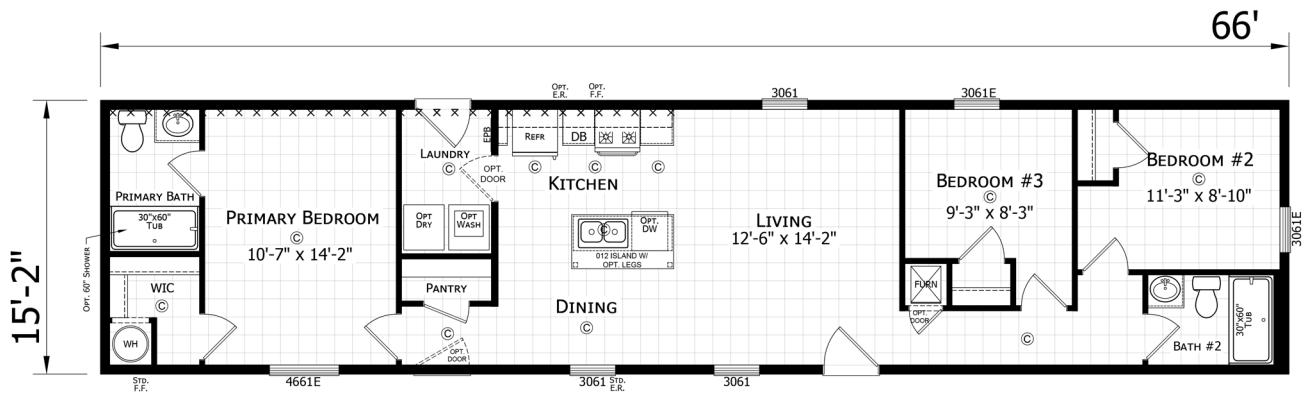
Opt.
2 Bedroom



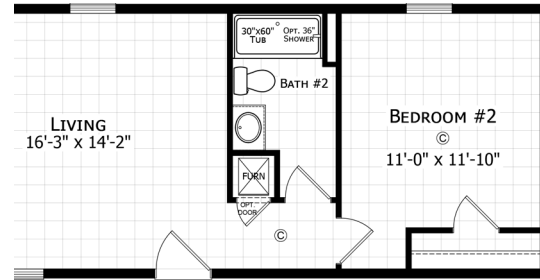
PARAMOUNT

16' Singlewide Homes

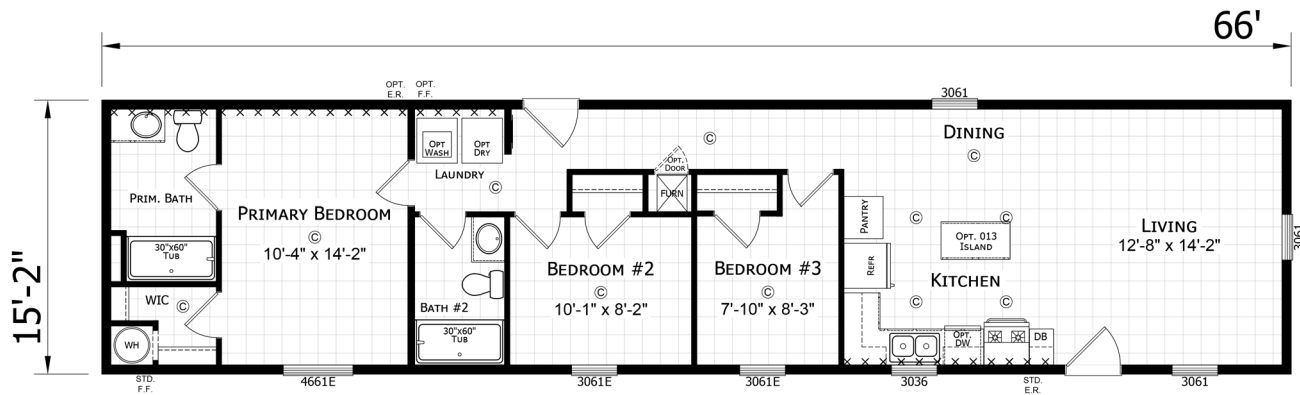
1666H32212 ■ 3 BED • 2 BATH • 1001 SQ. FT.



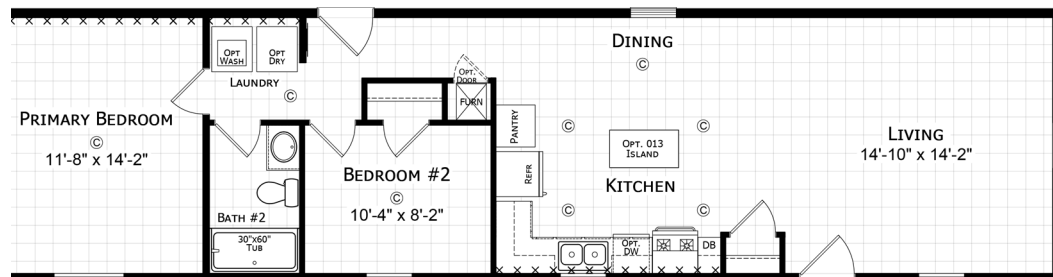
Opt.
2 Bedroom



1666H32217 ■ 3 BED • 2 BATH • 1001 SQ. FT.



Opt.
2 Bedroom

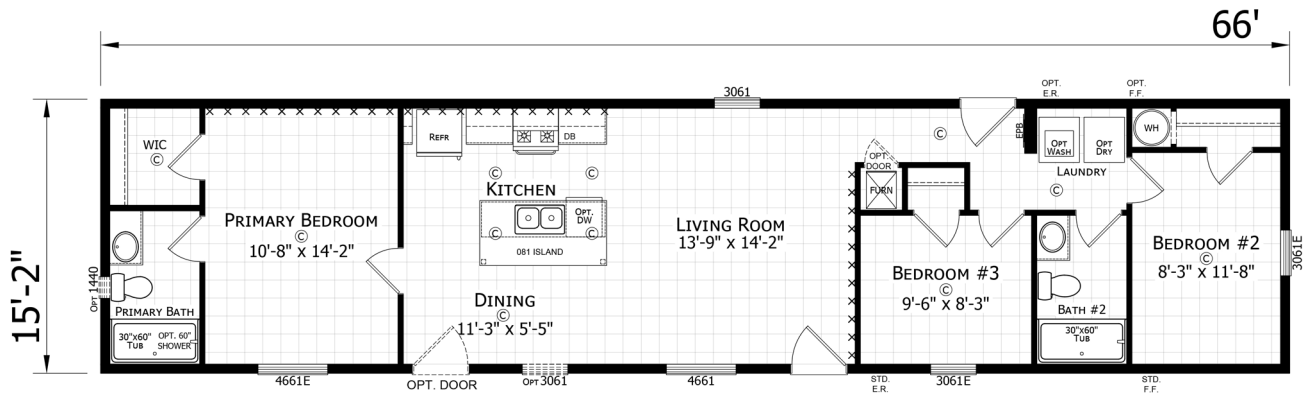


Optional reverse aisle is available for most homes

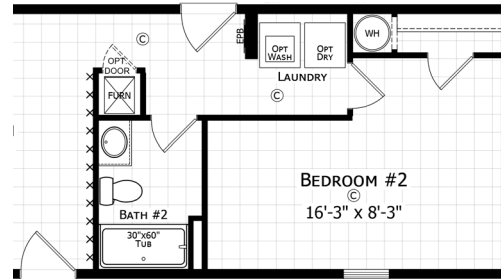
PARAMOUNT

16' Singlewide Homes

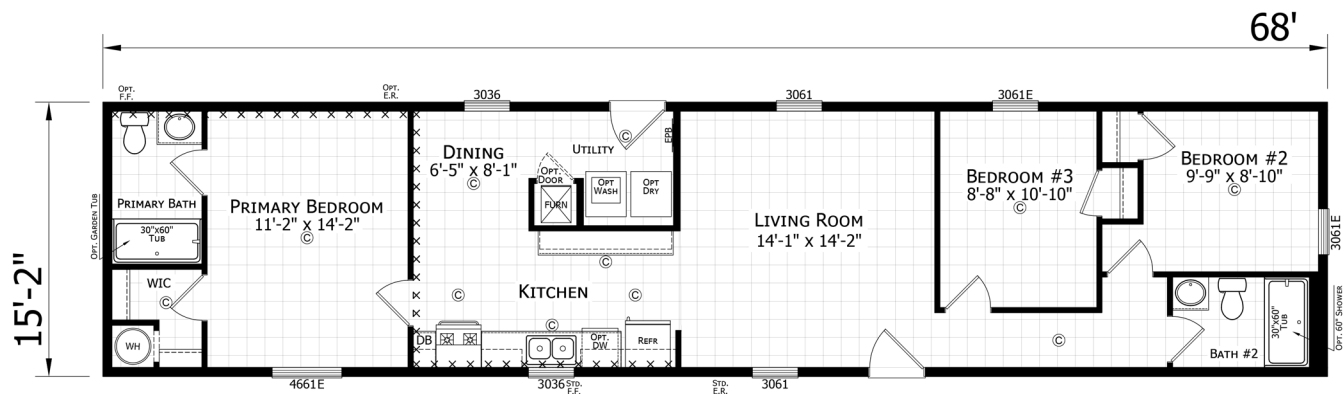
1666H32219 ■ 3 BED • 2 BATH • 1001 SQ. FT.



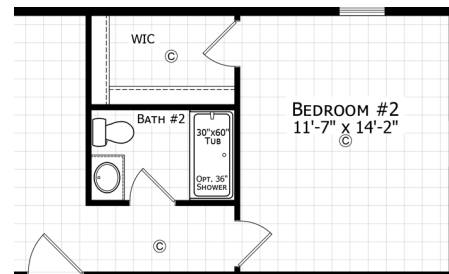
Opt.
2 Bedroom



1668H32085 ■ 3 BED • 2 BATH • 1031 SQ. FT.



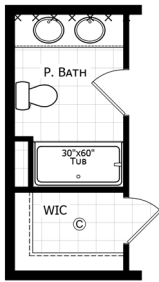
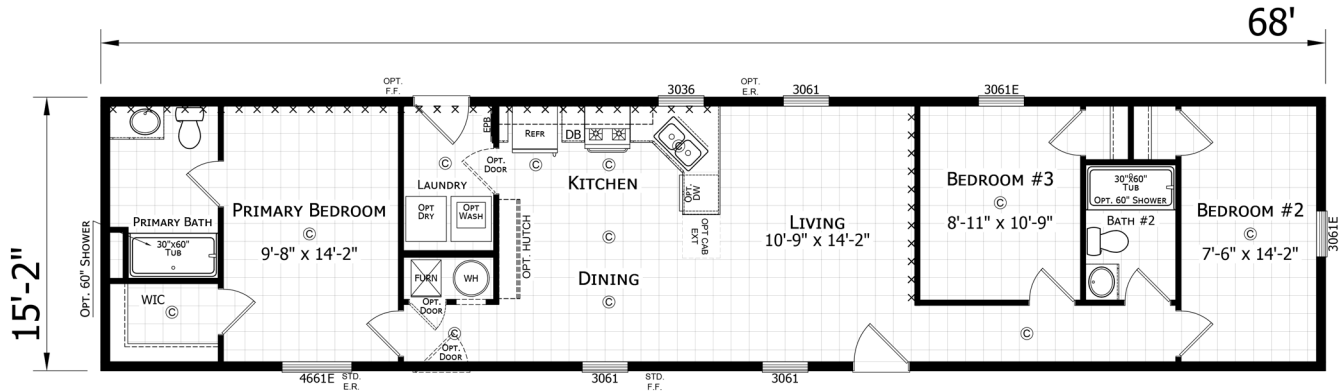
Opt.
2 Bedroom



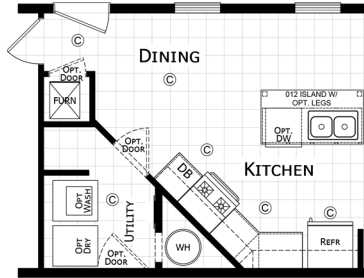
PARAMOUNT

16' Singlewide Homes

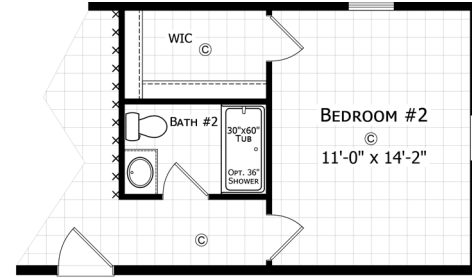
1668H32087 ■ 3 BED • 2 BATH • 1031 SQ. FT.



Opt. Primary Bath

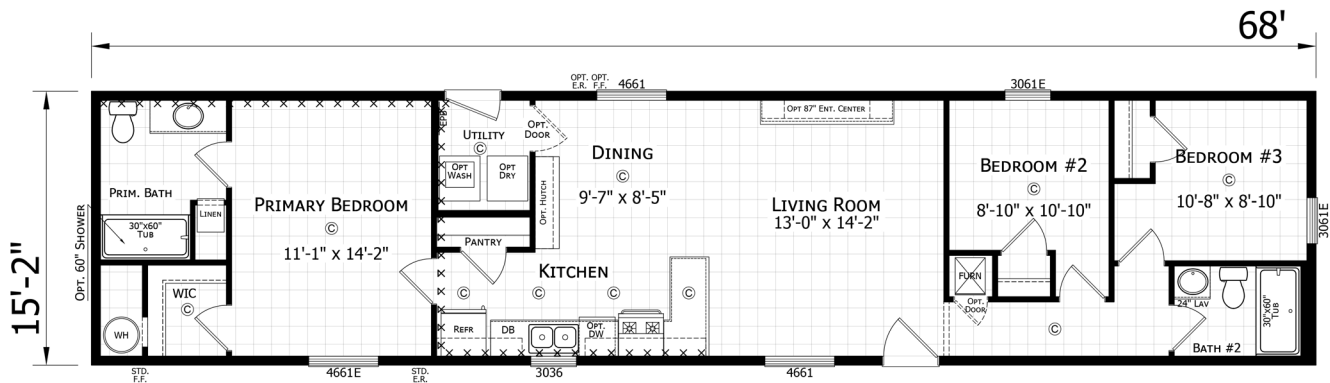


Opt. Kitchen



Opt. 2 Bedroom

1668H32220 ■ 3 BED • 2 BATH • 1031 SQ. FT.

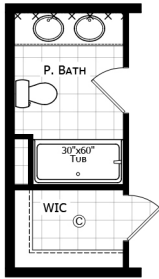
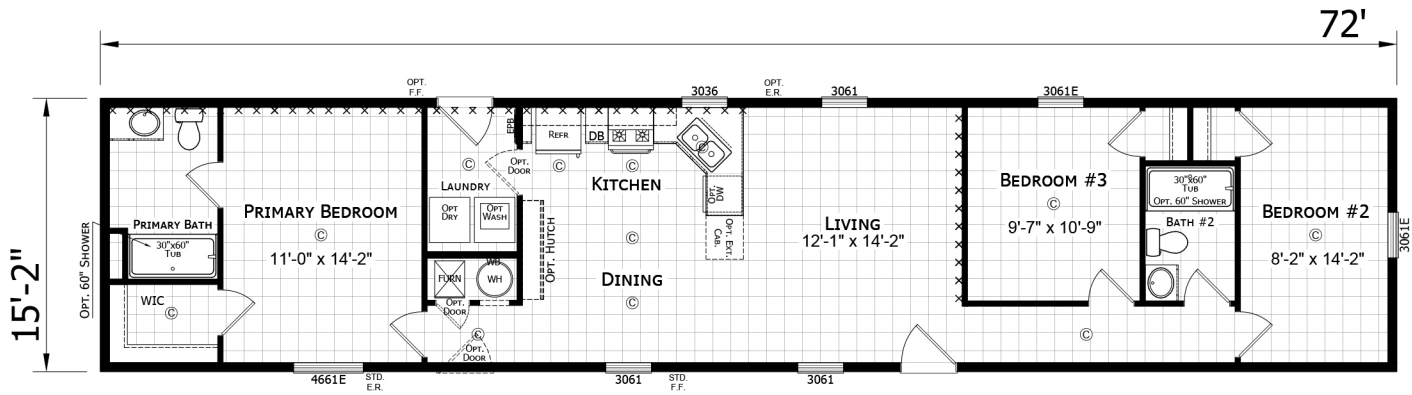


Optional reverse aisle is available for most homes

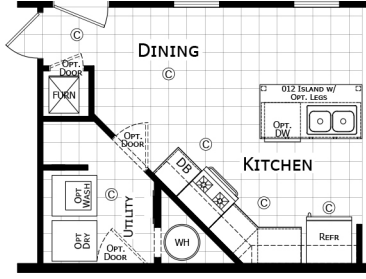
PARAMOUNT

16' Singlewide Homes

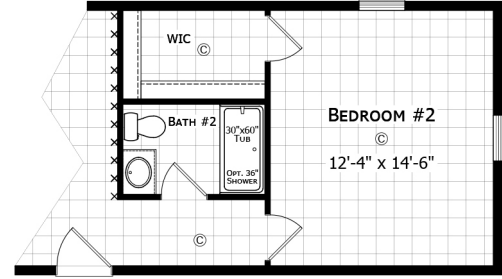
1672H32087 ■ 3 BED • 2 BATH • 1092 SQ. FT.



Opt.
Primary Bath

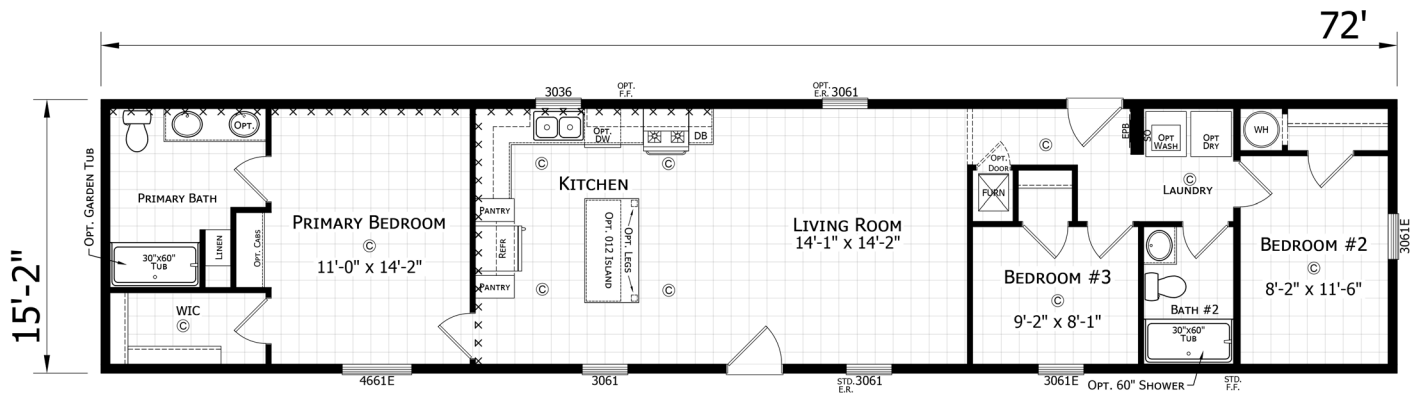


Opt. Kitchen



Opt. 2 Bedroom

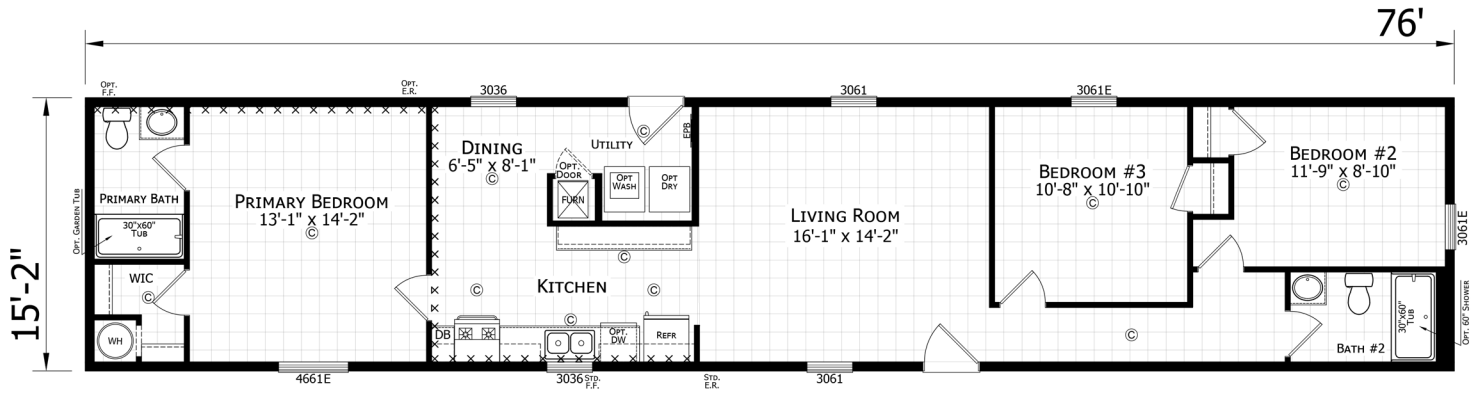
1672H32090 ■ 3 BED • 2 BATH • 1092 SQ. FT.



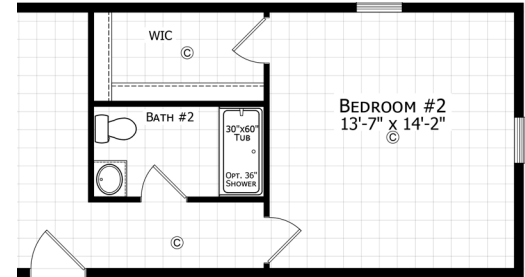
PARAMOUNT

16' Singlewide Homes

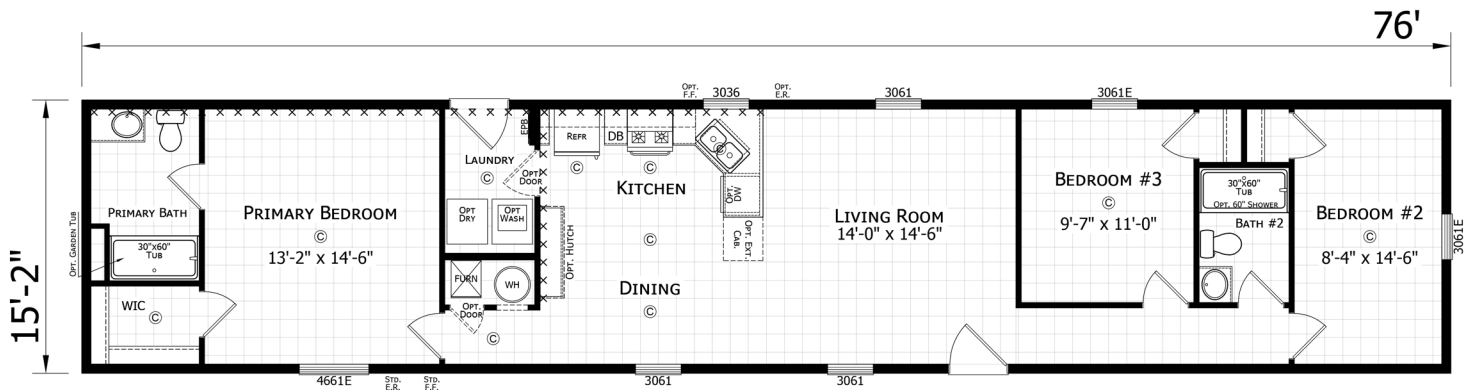
1676H32085 ■ 3 BED • 2 BATH • 1153 SQ. FT.



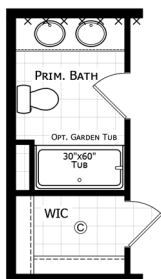
Opt.
2 Bedroom



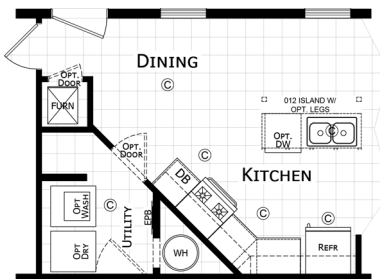
1676H32087 ■ 3 BED • 2 BATH • 1153 SQ. FT.



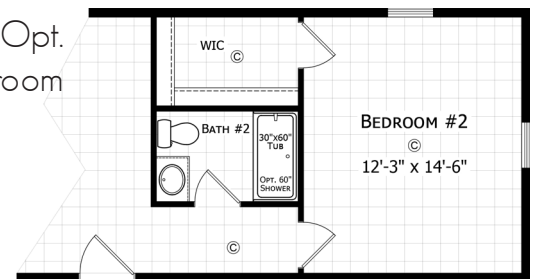
Opt.
Master
Bath



Opt.
Kitchen



Opt.
2 Bedroom

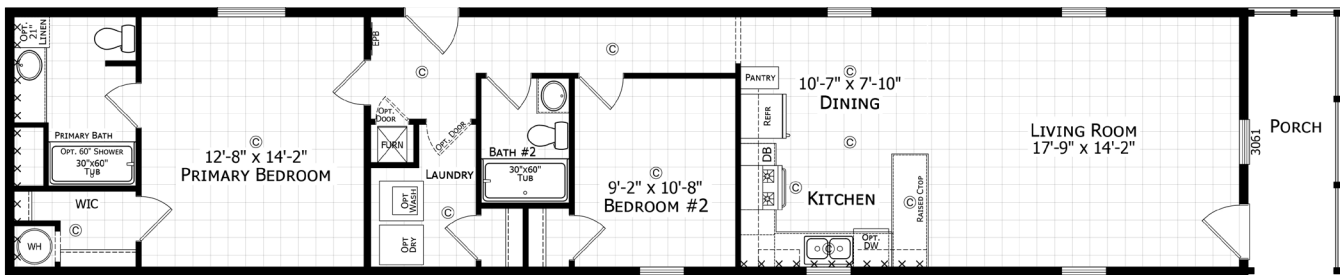
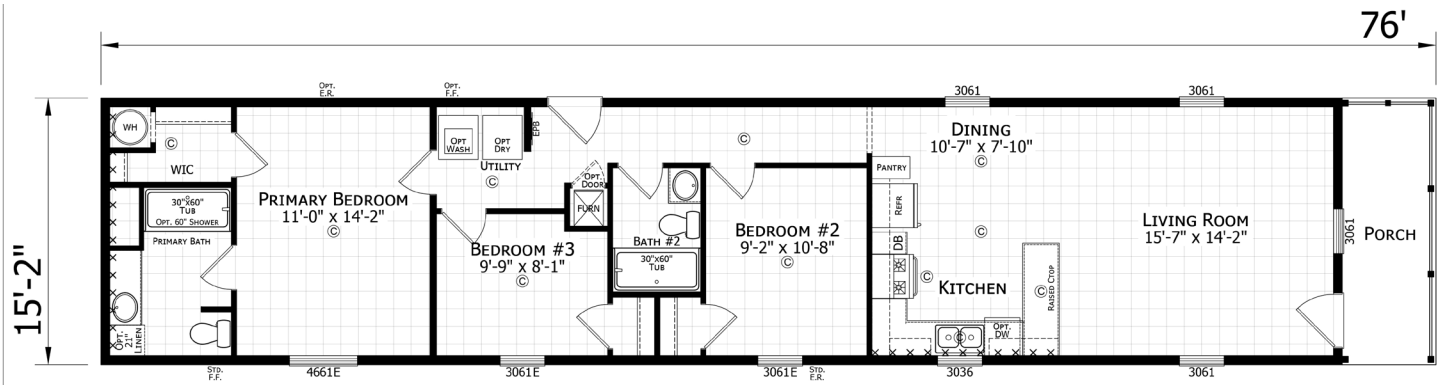


Optional reverse aisle is available for most homes

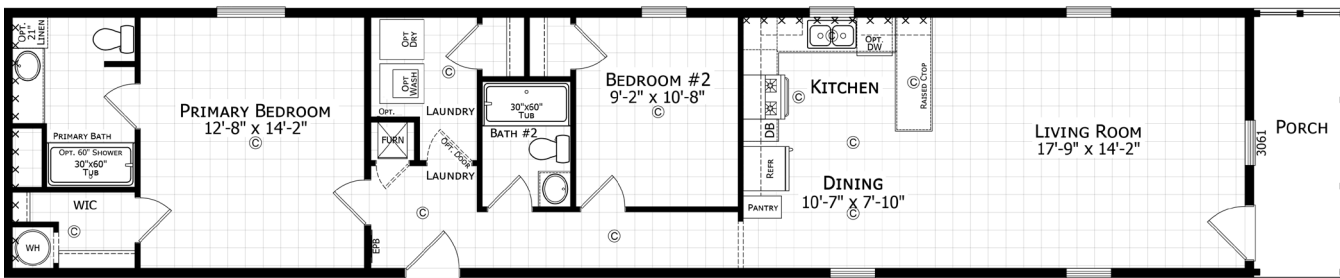
PARAMOUNT

16' Singlewide Homes

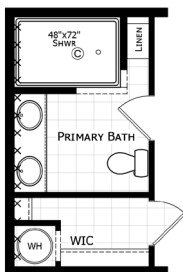
1676H32089 ■ 3 BED • 2 BATH • 1071 SQ. FT.



Opt. 2 Bedroom



Opt. 2 Bedroom w/ Reverse Aisle

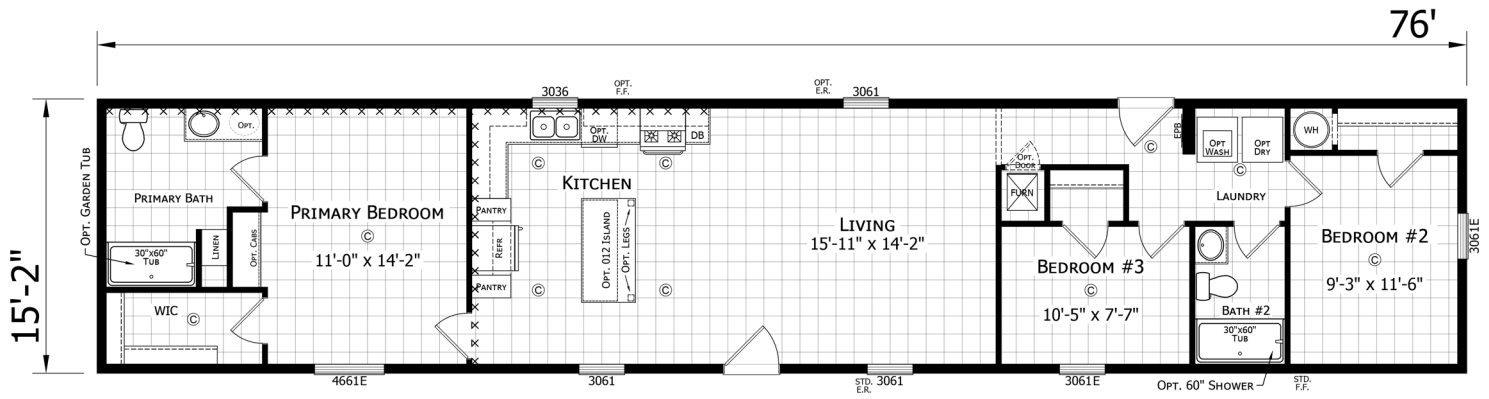


Opt. Serenity Shower

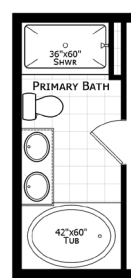
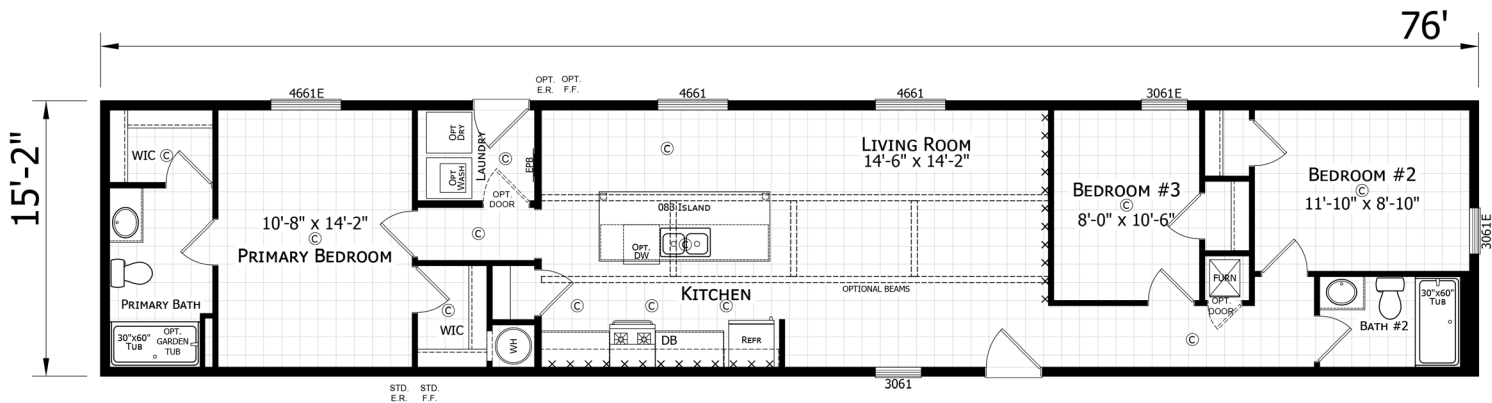
PARAMOUNT 16' Singlewide Homes



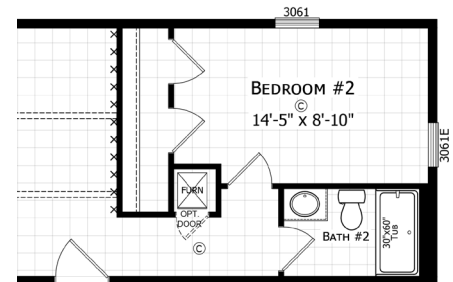
1676H32090 ■ 3 BED • 2 BATH • 1153 SQ. FT.



1676H32091 ■ 3 BED • 2 BATH • 1153 SQ. FT.



Opt. Primary Bath



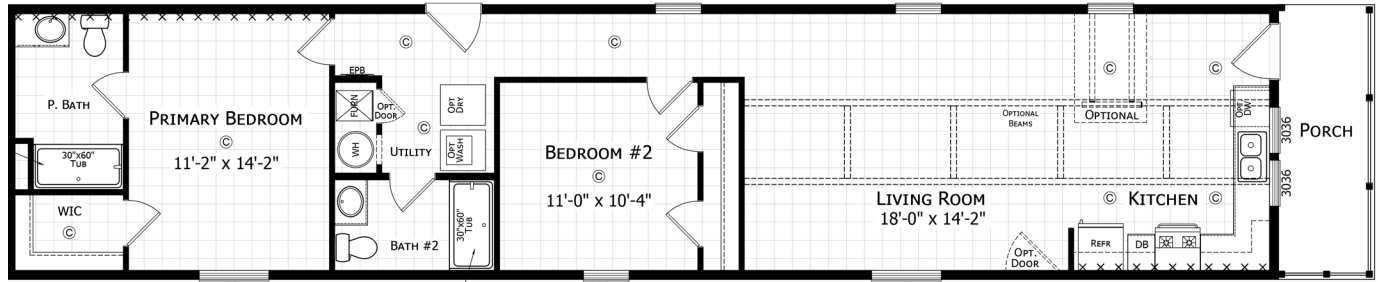
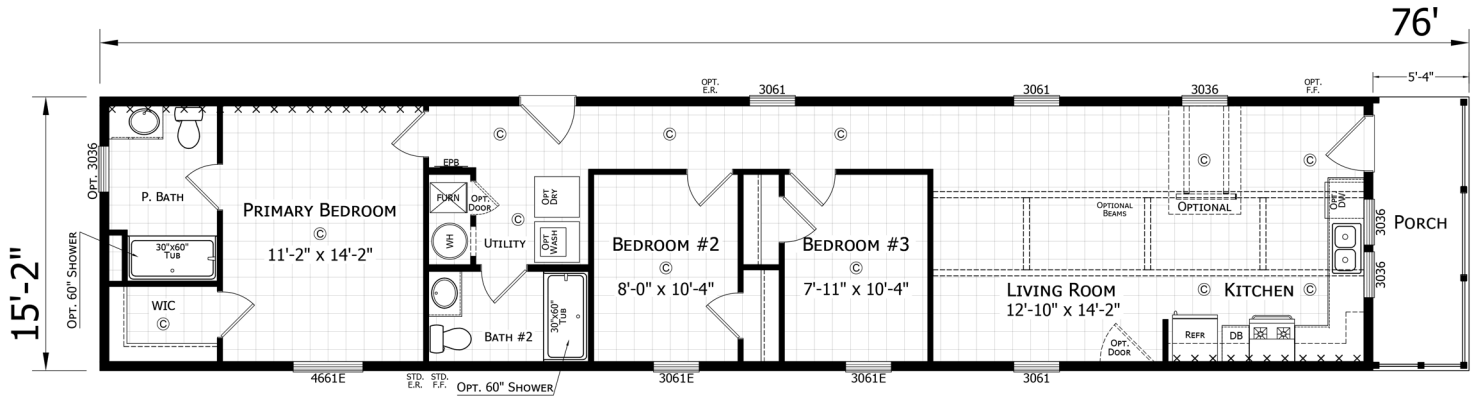
Opt. 2 Bedroom

Optional reverse aisle is available for most homes

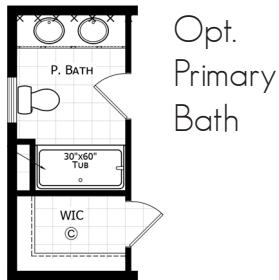
PARAMOUNT

16' Singlewide Homes

1676H32221 ■ 3 BED • 2 BATH • 1071 SQ. FT.



Opt. 2 Bedroom



Optional reverse aisle is available for most homes

REDMAN  HOMES. **PARAMOUNT**



Shown with optional S2 end elevation and site-built porch by others.

Shown with optional S1 end elevation, 6' dormer and site-built porch by others.



Shown with optional S5 end elevation, 6' dormer and site-built porch by others.

Shown with optional S5 end elevation and site-built porch by others.



STANDARD FEATURES Singlewide Homes

STRUCTURAL

- Recessed Frame
- Detachable Hitch
- 48" OC Outriggers
- 2 x 4 Exterior Sidewalls - 16" OC
- (14') 2 x 6 Floor Joist - 16" OC
- (16') 2 x 8 Floor Joist - 16" OC
- R-11 Sidewall Insulation
- R-11 Floor Insulation
- R-28 Roof Insulation
- 5/8" OSB Decking
- 7/16" OSB Roof Sheathing
- 30lb PSF Roof Load

EXTERIOR

- 8' Sidewalls
- Nominal 3/12 Roof Pitch
- 25 Year Shingles
- Storm Board Sheathing
- Double 4" Vinyl Siding
- White Aluminum Fascia
- White Vented Soffit
- Black Torch Light - Exterior Doors
- Upgrade Ice & Water Shield

WINDOWS & DOORS

- 6 Panel Residential Front Door - no storm
- 6 Panel Residential Rear Door - no storm
- Low "E" Vinyl Grid Windows
- 30" 2-Panel White Raised Panel Interior Doors
- 2-Mortised Hinges
- Black Hinges & Interior Door Knobs
- 3 Side Door Stop

INTERIOR FINISH

- Flat Ceilings
- Main Panel T/O
- Factory Designer Choice
- Accent Panels - VBP
(Choice 1 Pattern Per House)
- Linoleum T/O - Choice of Color
- Wire Shelving in Closets
- Smoke Alarms w / Battery Backup
- Flat Wrapped Door Casing
- Flat Ceiling Cove
- Wrapped Door Jambs
- Wrapped Window Jambs
- Formica Countertops - Choice of Color
- Self Edge Countertops
- Finished Closets T/O

KITCHEN / BATHROOMS

- Black Standard Electric Range
- Black 30" Range Hood
- Black 18 CF Over/Under Refrigerator
- 30" O/H Cabinets w / Fixed Shelf
- Wrapped Shaker Cabinets
- Wrapped Cabinet Stiles
- Single Bank of Drawers - Kit
- Shelf Over Refrigerator
- Center Shelves in Base - Kitchen VBP
- Extendable Deluxe Drawer Guides
- 7" Stainless Steel Kitchen Sink
- 60" Fiberglass Tub/Shower Combo
- Round Commode
- Single Bank of Drawers - Baths - VBP
- Primary Bath Lavs 30" or Greater - VBP
- 36" High Bath Lav Base Cabinet
- China Lav Bowls
- Metal Faucets T/O
- Bath Fan - No Light

HEATING / PLUMBING / ELECTRICAL

- Electric Furnace
- Aluminum Heat Ducts
- In-Line Floor Registers
- 100 AMP Service
- (1) Exterior Recept
- All Copper Wiring
- Plumb for Washer
- Wire for Electric Dryer
- PEX Water Lines
- 30 Gallon Electric Water Heater
- (1) Frost Free Exterior Faucet
- Main Water Shut Off
- Water Shut-Offs Throughout
- Can Lights Per Print
- 3 Bulb Strip Lights @ Bath Vanities
- Programmable Thermostat
- Extra Conduit Drop In Panel Box

VBP=Varies by plan

ALL Redman Homes are backed by a 7 YEAR WARRANTY

Due to continuous product development and improvement, prices, specifications and material are subject to change without notice or obligation. Square footage and other dimensions are approximate. Included images are artist renderings and are not intended to be an accurate representation of the homes. Renderings and Floor Plans may be shown with optional features and / or third party additions that may not be available in all regions or situations. Exterior Renderings may include onsite builder built options not offered by Champion Home Builders, Inc.



308 Sheridan Drive
Topeka, IN 46571
www.redmanhomesofindiana.com

