

PARAMOUNT

by REDMAN  HOMES.

Sectional Homes

About Us

Located in the Amish country of Northern Indiana where pride and craftsmanship run deep, we are recognized today for offering some of the highest-quality manufactured and modular homes in the Midwest. It's a recognition achieved by consistently delivering more than our customers might expect.

- **More innovative quality features.**
- **More home styles and flexible floor plan designs.**
- **More helpful customer service.**
- **And most of all, more home for your money.**

Beyond just building you a house,

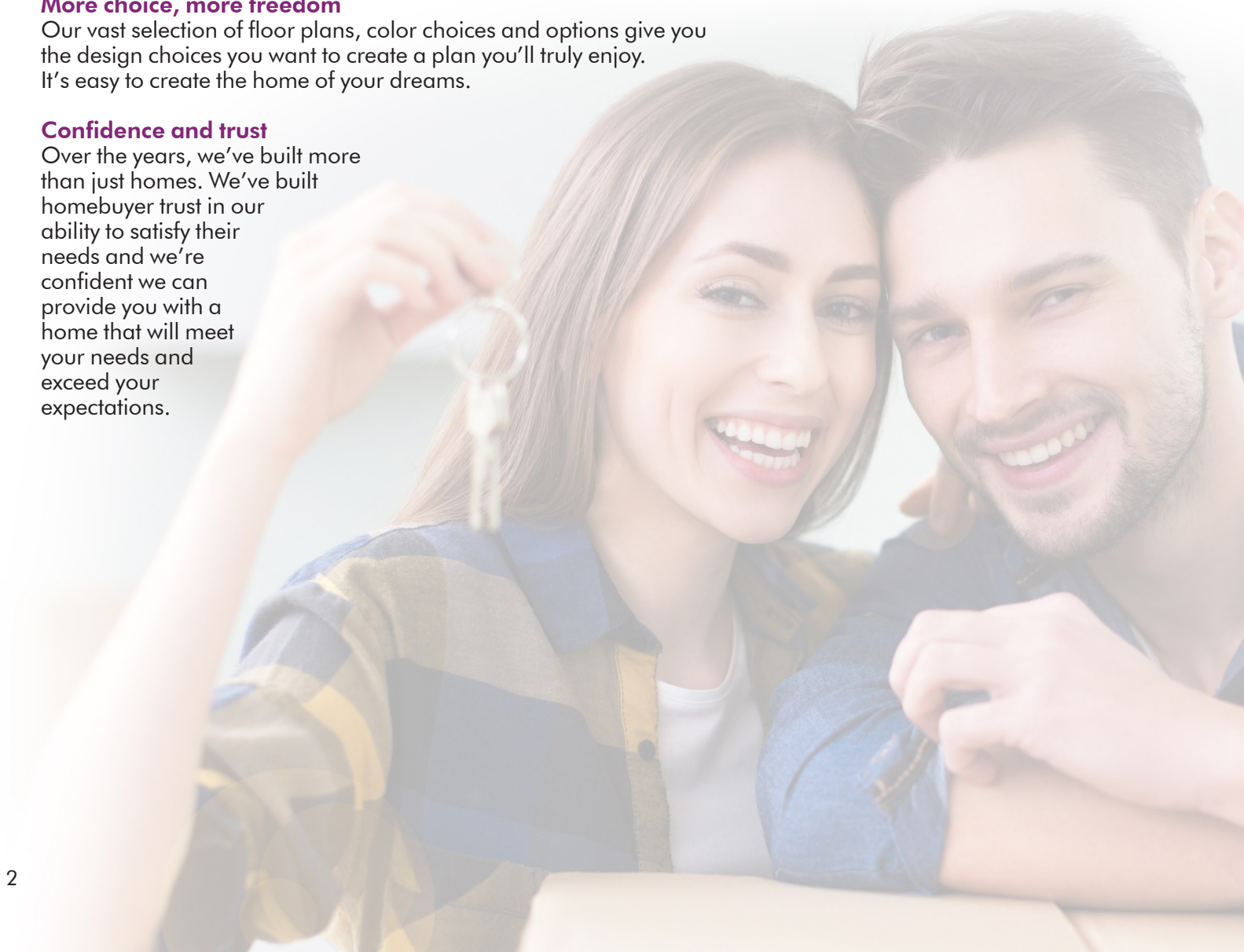
We're committed to providing you and your family with a home to make memories in that will last a lifetime. Somewhere you can feel secure. A place you can call your own. A home that fits your lifestyle and has your own personal touch. Whether you're an active young family constantly on the go or empty-nesters ready to simplify, just relax – we have a home that's right for you.

More choice, more freedom

Our vast selection of floor plans, color choices and options give you the design choices you want to create a plan you'll truly enjoy. It's easy to create the home of your dreams.

Confidence and trust

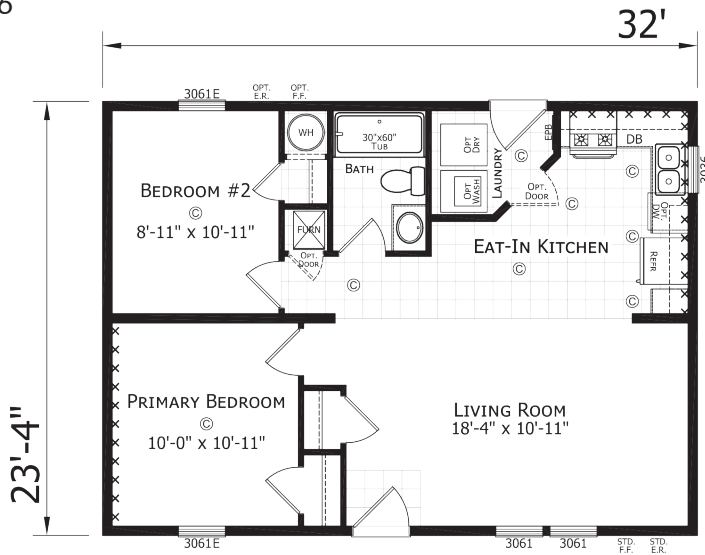
Over the years, we've built more than just homes. We've built homebuyer trust in our ability to satisfy their needs and we're confident we can provide you with a home that will meet your needs and exceed your expectations.



PARAMOUNT 24' Sectional Homes

CASPER ■ 2 BED • 1 BATH • 747 SQ. FT.

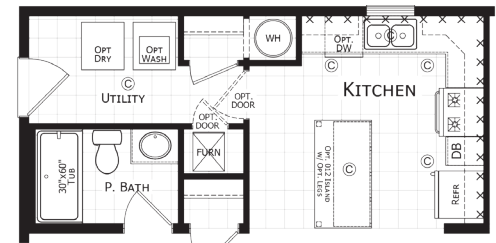
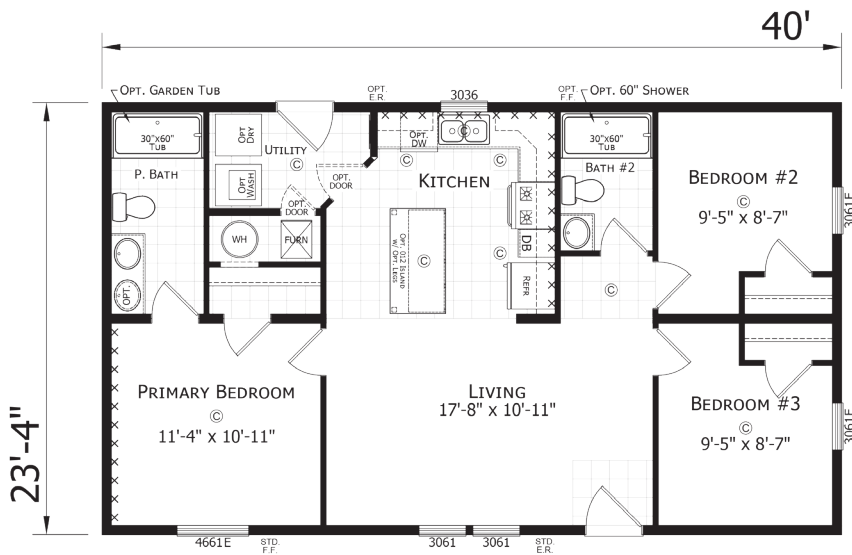
2432H21166



Also available in a 24' x 36'

SHERIDAN ■ 3 BED • 2 BATH • 933 SQ. FT.

2440H32382



Opt. End Entry

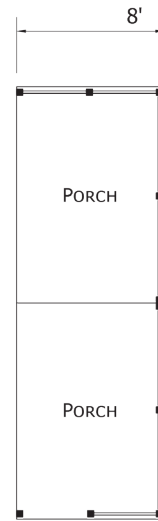
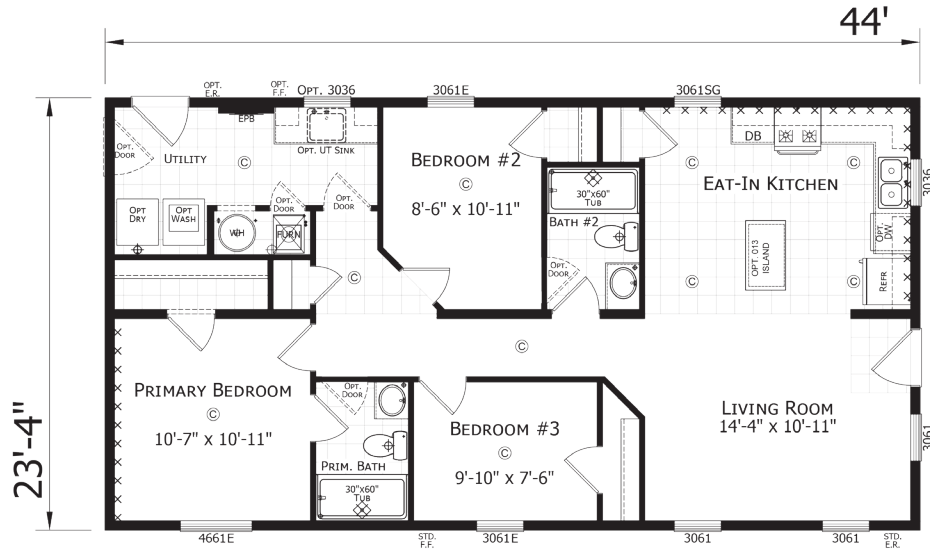
Also available in a 24' x 44' and a 24' x 48'

NOTE: 24' wide homes are not available as modulares.

PARAMOUNT 24' Sectional Homes

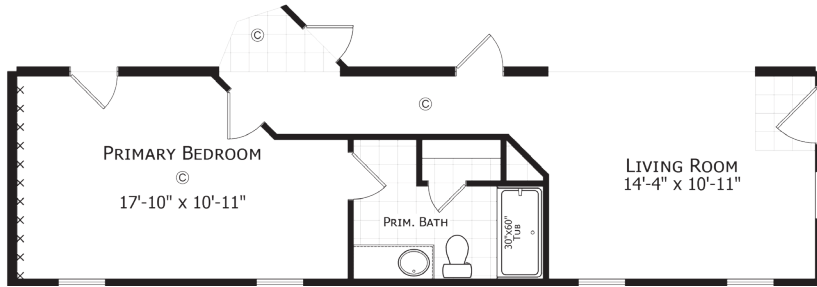
SUNDANCE 3 BED • 2 BATH • 1027 SQ. FT.

2444H32167

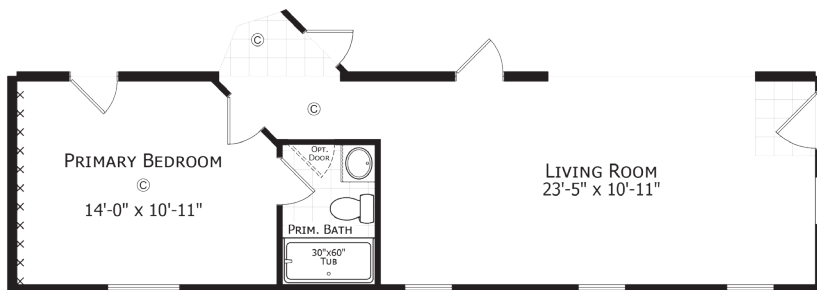


Opt. Porch

Also available in a 24' x 48' and a 24' x 52'



Opt. Master Suite

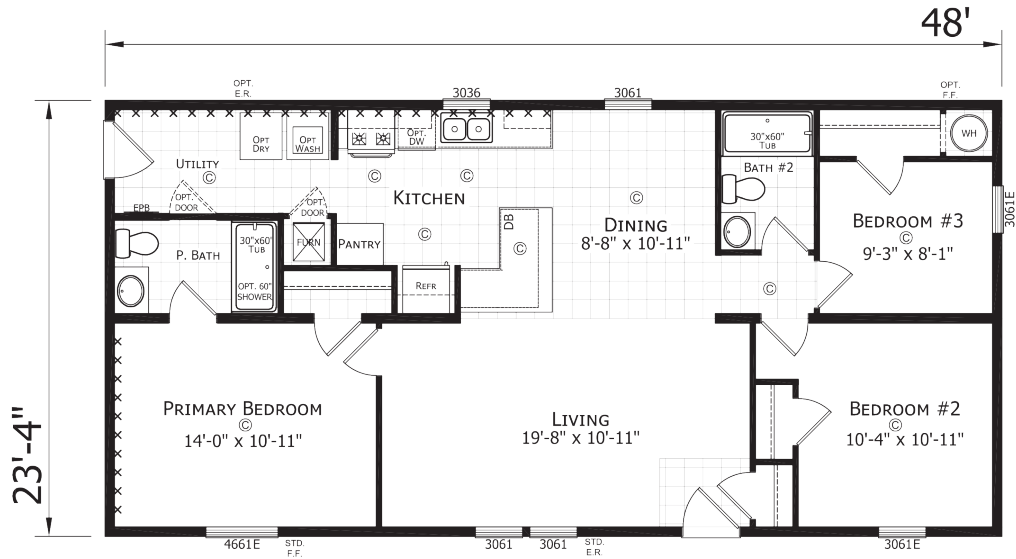


Opt. 2 Bedroom

PARAMOUNT 24' Sectional Homes

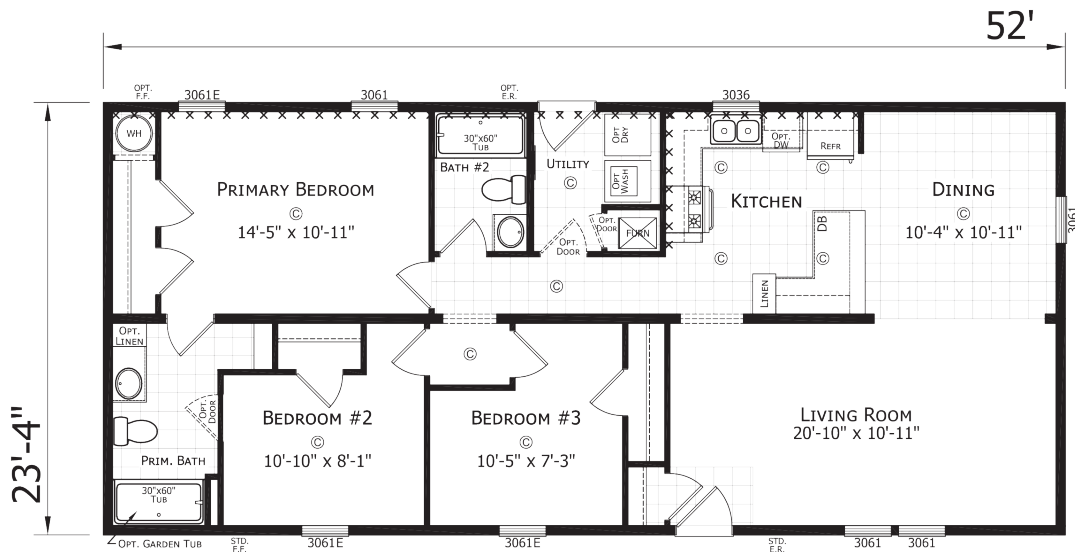
FAIRPLAY 3 BED • 2 BATH • 1120 SQ. FT.

2448H32384



BROOMFIELD 3 BED • 2 BATH • 1213 SQ. FT.

2452H32160



Also available in a 24' x 56'

REDMAN  HOMES®

CHAMPION®

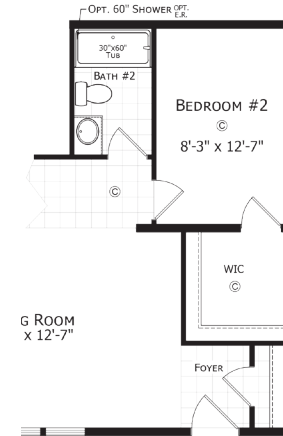
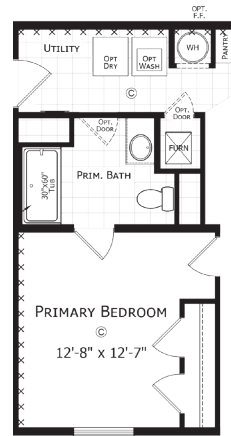
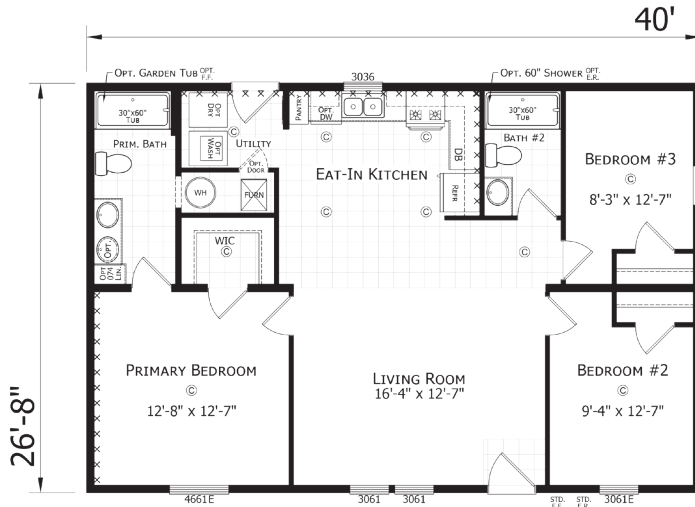
HOME BUILDERS



PARAMOUNT 28' Sectional Homes

MONROE 3 BED • 2 BATH • 1067 SQ. FT.

2840H32024



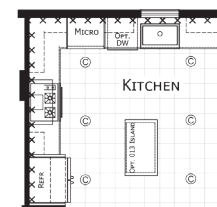
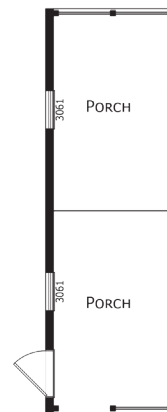
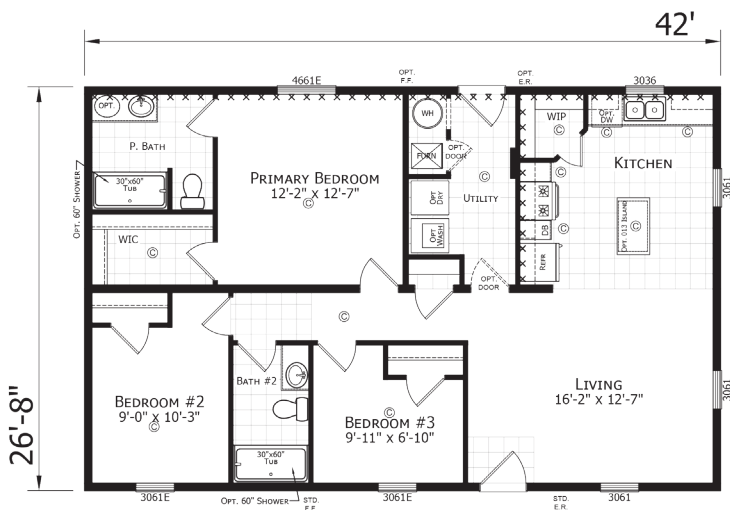
Also available in a 28' x 44 and a 28' x 48'

Opt. Rear Entry

Opt. 2 Bedroom

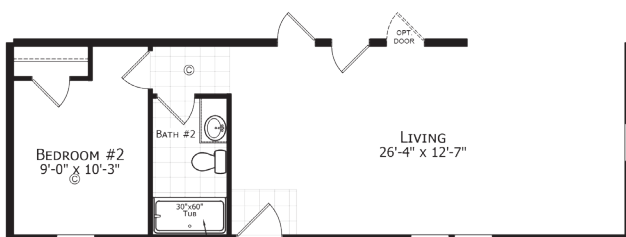
APPLETON 3 BED • 2 BATH • 1120 SQ. FT.

2842H32388



Opt. Ultimate Kitchen 2

Opt. Porch



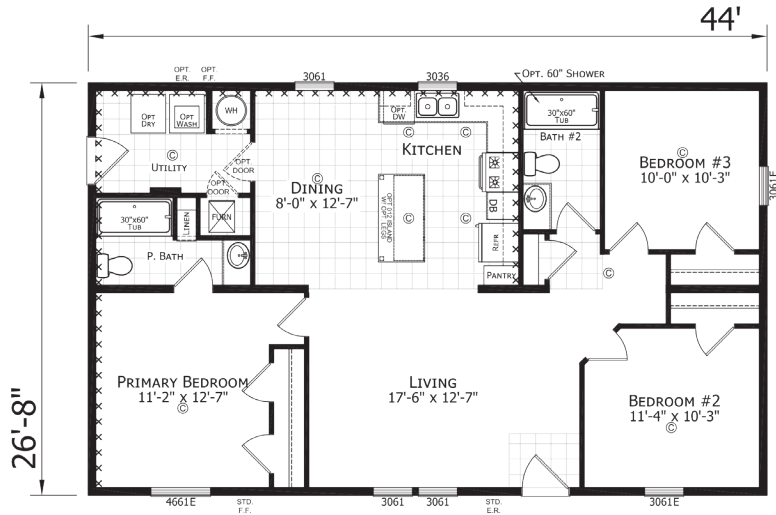
Opt. 2 Bedroom

PARAMOUNT 28' Sectional Homes

BAYFIELD

3 BED • 2 BATH • 1173 SQ. FT.

2844H32169

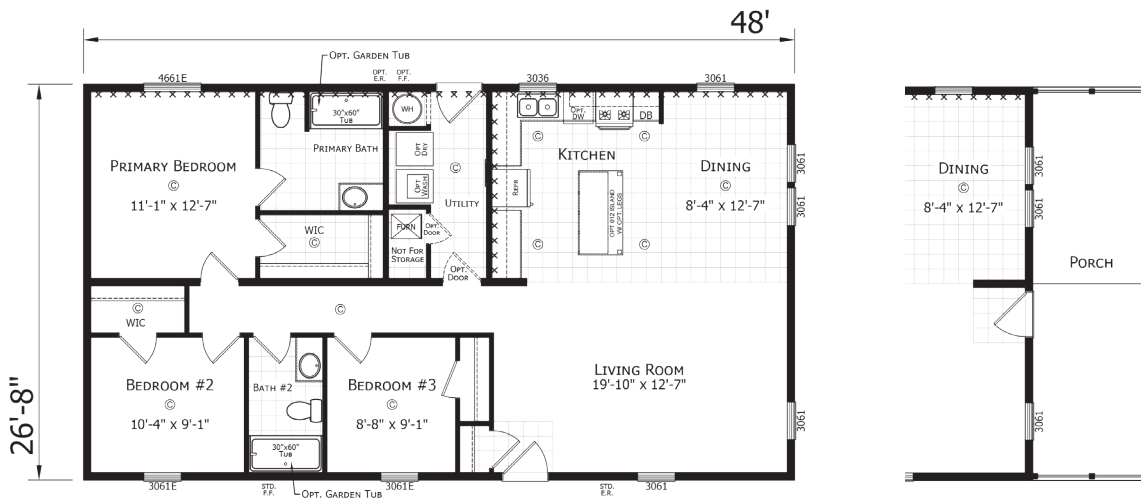


Also available in a 28' x 48' and a 28' x 52'

LANCASTER

3 BED • 2 BATH • 1280 SQ. FT.

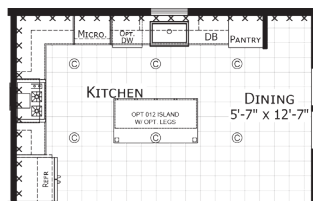
2848H32160



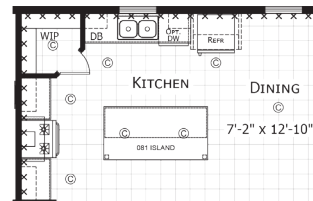
Opt. Porch

Also available in a 28' x 52'

Opt. Ultimate Kitchen 2



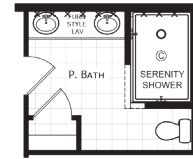
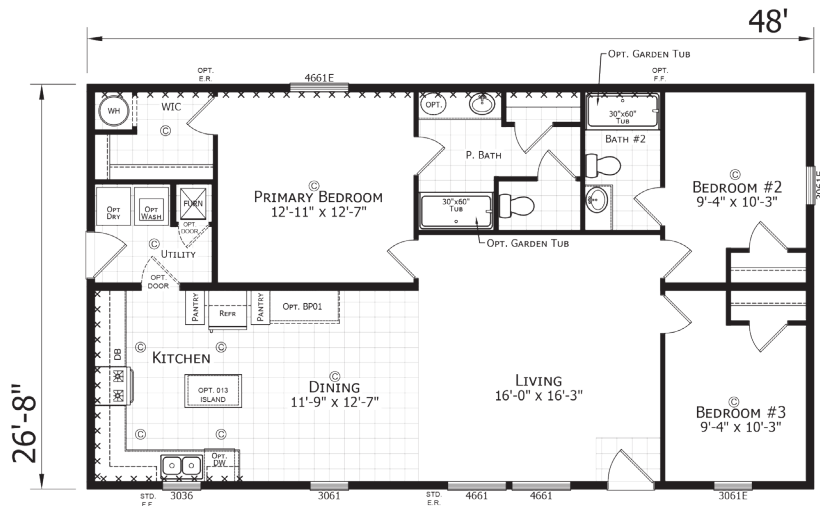
Opt. Summit Kitchen



PARAMOUNT 28' Sectional Homes

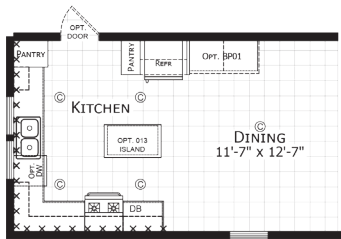
BRIGHTON 3 BED • 2 BATH • 1280 SQ. FT.

2848H32170

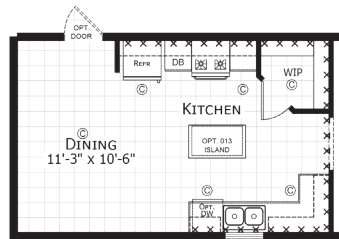


Opt. Serenity Bath

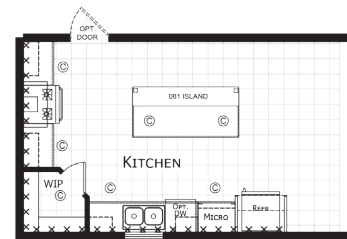
Also available in a 28' x 52'



Opt. Kitchen 1



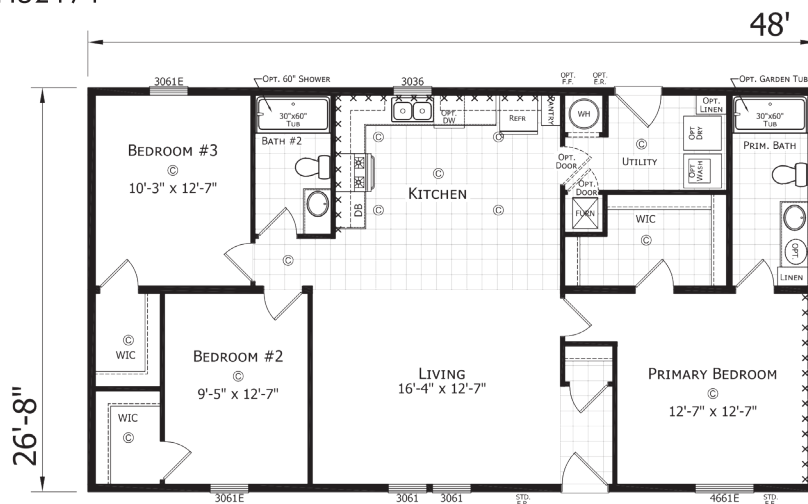
Opt. Kitchen 2



Opt. Summit Kitchen

LINCOLN 3 BED • 2 BATH • 1280 SQ. FT.

2848H32171

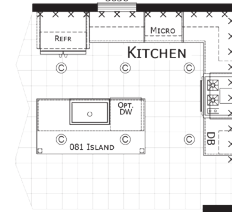
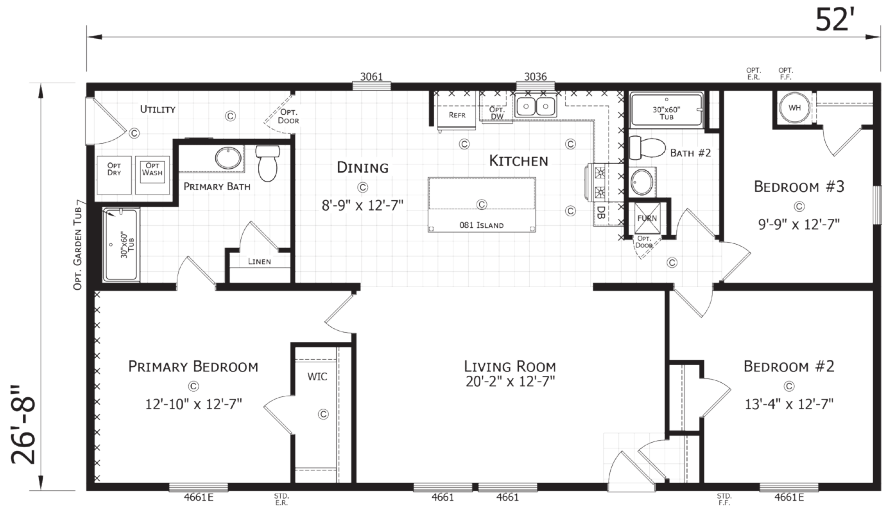


Also available in a 28' x 52' and a 28' x 56'

PARAMOUNT 28' Sectional Homes

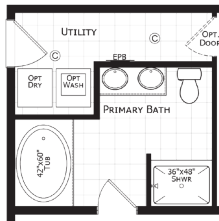
WARREN 3 BED • 2 BATH • 1387 SQ. FT.

2852H32172

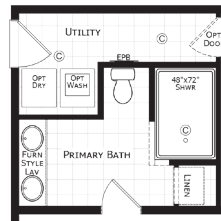


Opt.
Ultimate
Kitchen 2

**Also available
in a 28' x 56'
and a 28' x 60'**



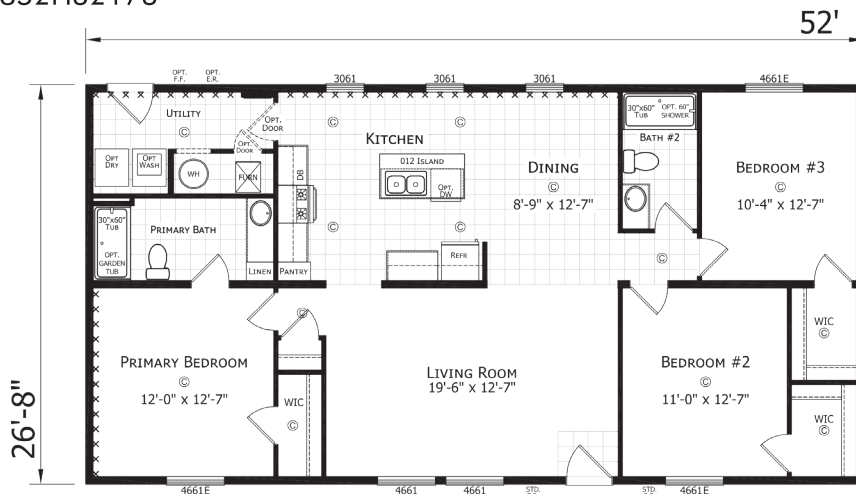
Opt. Primary Bath



Opt. Serenity Bath

JACKSON 3 BED • 2 BATH • 1387 SQ. FT.

2852H32173

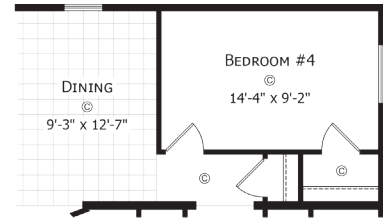
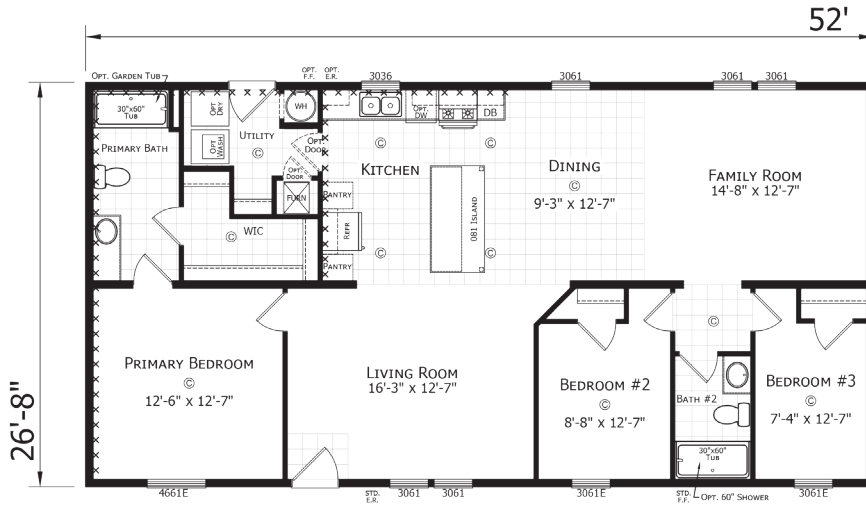


**Also available
in a 28' x 56'**

PARAMOUNT 28' Sectional Homes

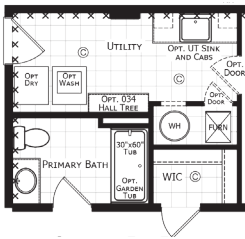
VENTURA ■ 3 BED • 2 BATH • 1387 SQ. FT.

2852H32034

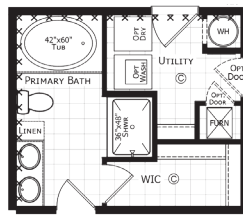


Opt. Bedroom 4

Also available
in a 28' x 56'



Opt.
End
Entry

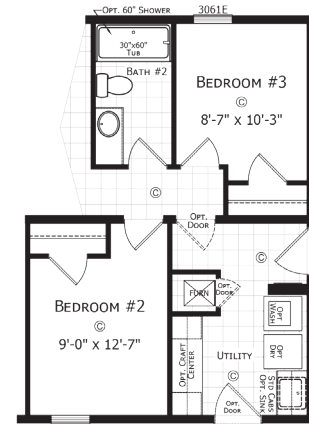
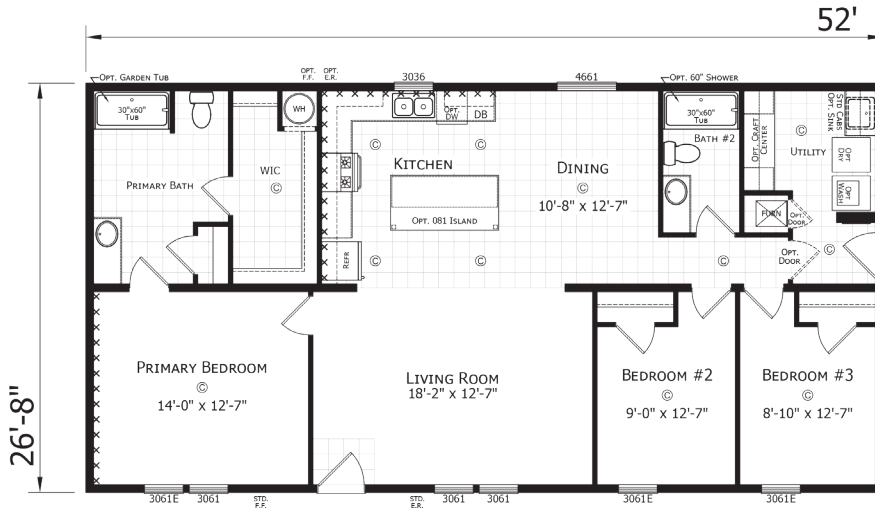


Opt.
Glamour
Bath

PARAMOUNT 28' Sectional Homes

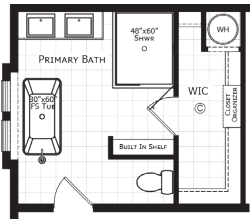
SUMMIT 3 BED • 2 BATH • 1387 SQ. FT.

2852H32A1C

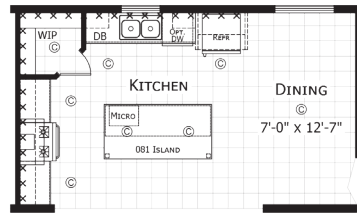


Opt. Front Entry

Also available in a 28' x 56' and a 28' x 64'



Opt. Master Bath



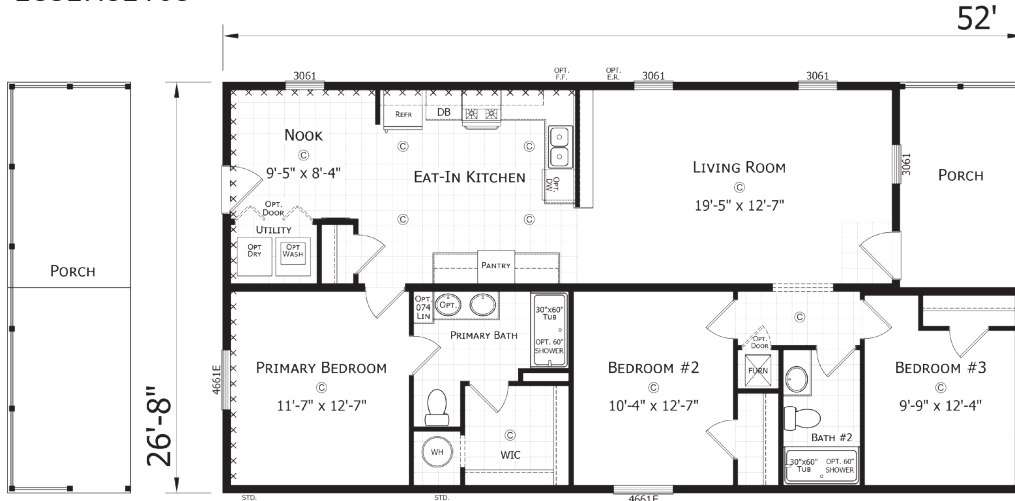
Opt. Summit Kitchen



Opt. Utility Room "B"

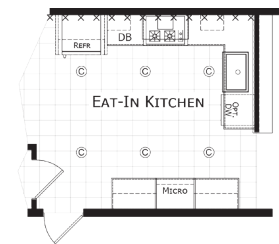
PONTIAC 3 BED • 2 BATH • 1280 SQ. FT.

2852H32103

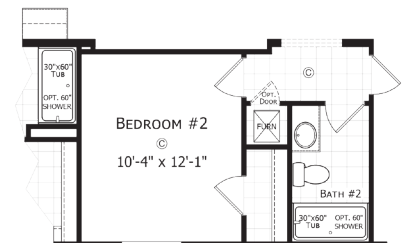


Opt. Porch

Also available in a 28' x 56'



Opt. Ultimate Kitchen 2



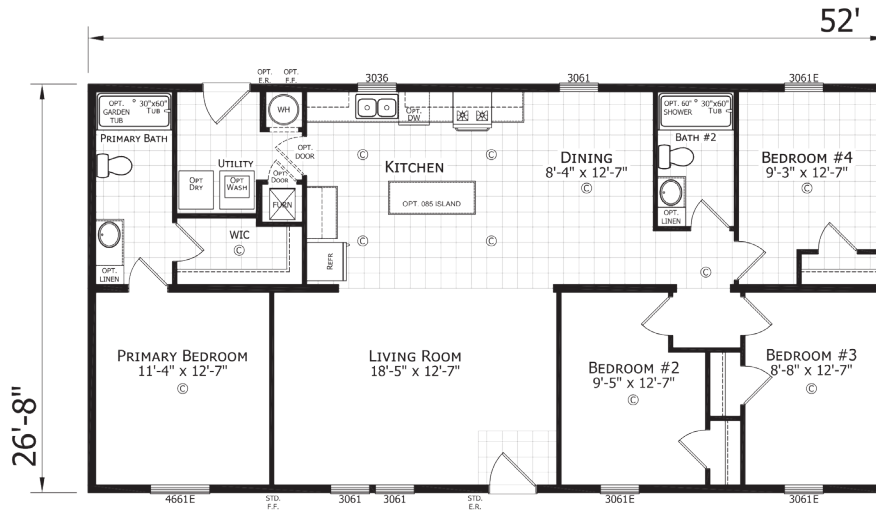
Opt. Living Room Offset

PARAMOUNT 28' Sectional Homes

LIVINGSTON

4 BED • 2 BATH • 1387 SQ. FT.

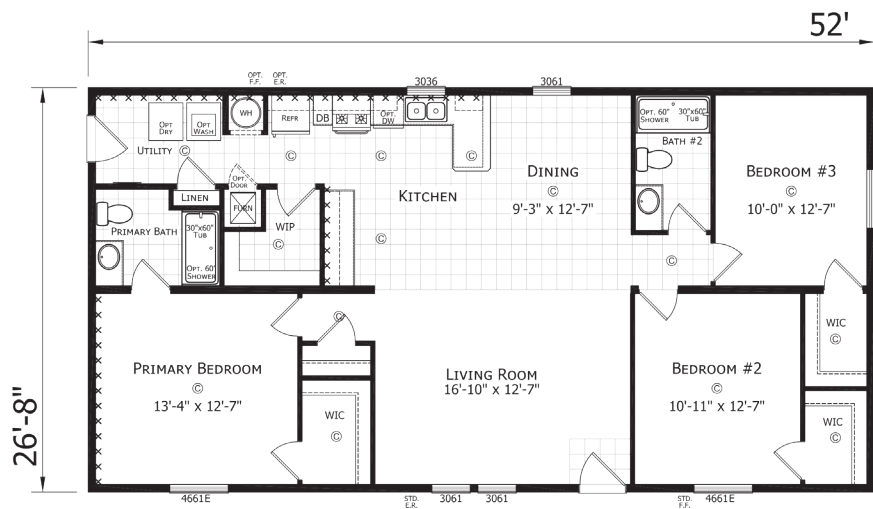
2852H42096



PIERRE

3 BED • 2 BATH • 1387 SQ. FT.

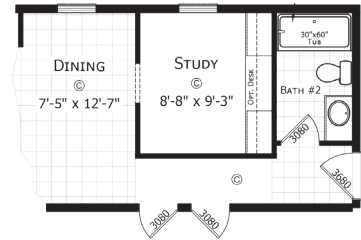
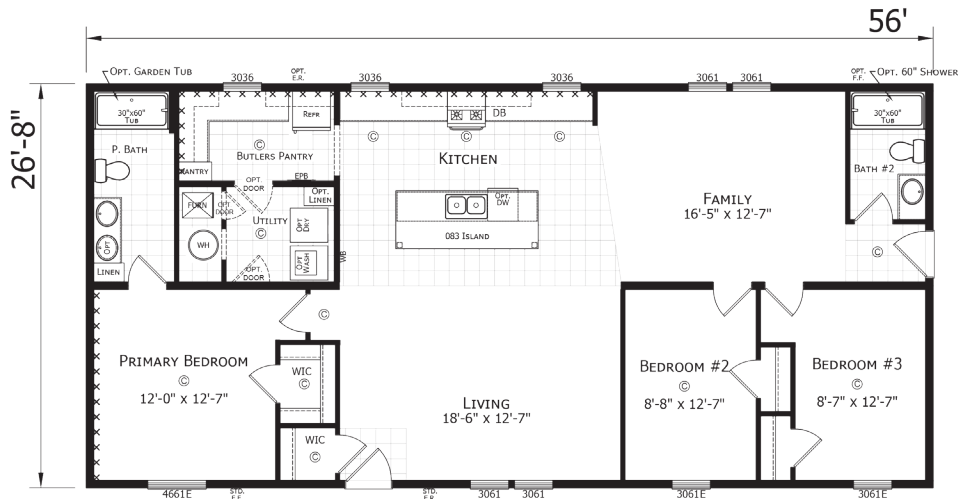
2852H32393



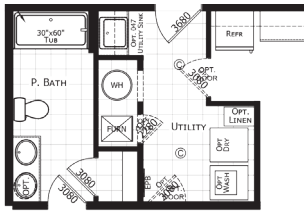
PARAMOUNT 28' Sectional Homes

BELVIDERE 3 BED • 2 BATH • 1493 SQ. FT.

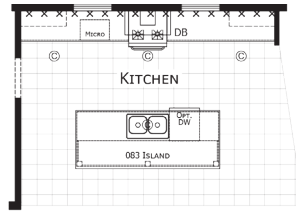
2856H32392



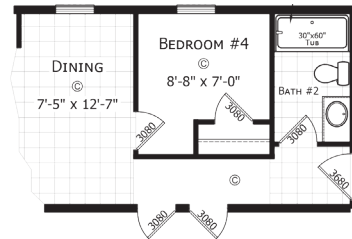
Opt. Study/Dining



Opt. Utility Room



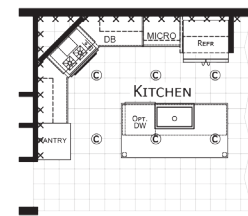
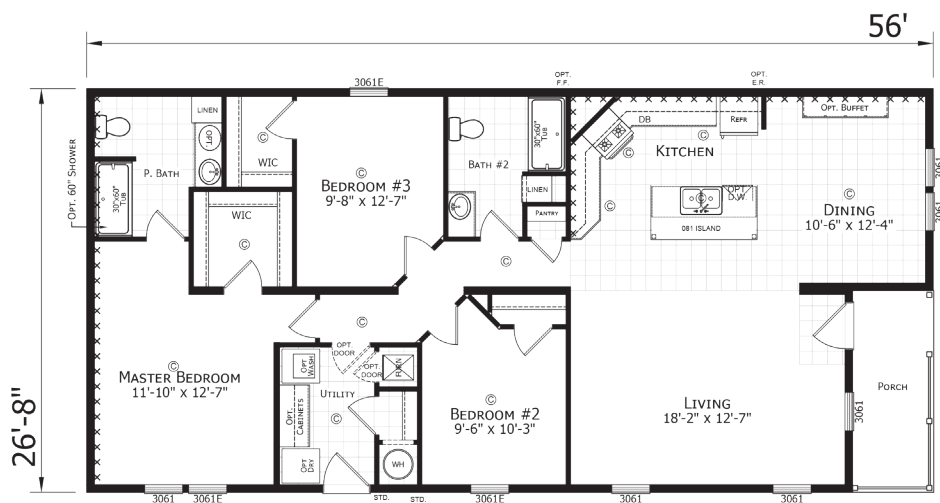
Opt. Kitchen



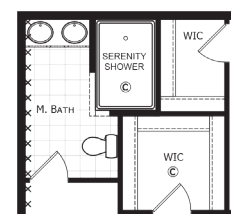
Opt. Bedroom 4

BAY PORT 3 BED • 2 BATH • 1423 SQ. FT.

2856H32168



Opt. Ultimate Kitchen 2



Opt. Serenity Bath

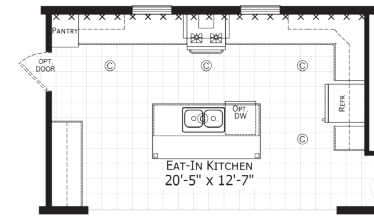
Also available in a 28' x 60'

PARAMOUNT 28' Sectional Homes

SILVERTON

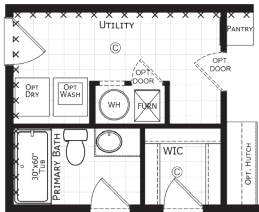
3 BED • 2 BATH • 1493 SQ. FT.

2856H32174

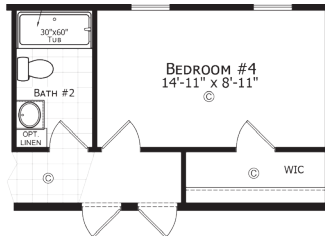


Opt. Kitchen

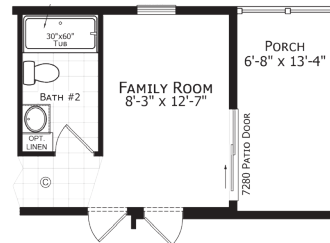
**Also available
in a 28' x 60'**



Opt. End Entry



Opt. Bedroom 4



Opt. Half Porch

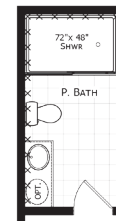
PARAMOUNT 28' Sectional Homes

EASTON ■ 3 BED • 2 BATH • 1462 SQ. FT.

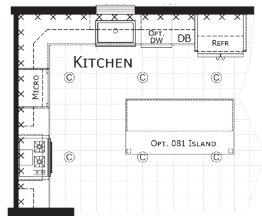
2856H32301



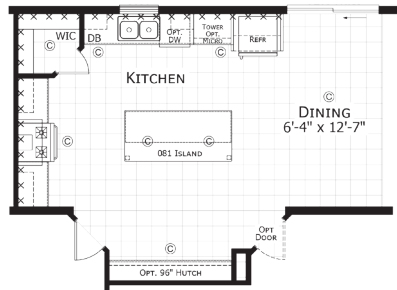
Also available
in a 28' x 60'



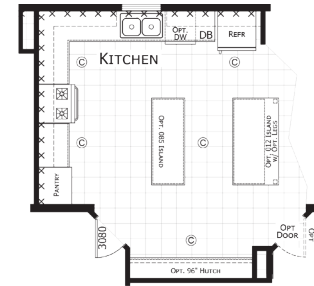
Opt. Luxe Shower



Opt. Ultimate Kitchen 2



Opt. Summit Kitchen



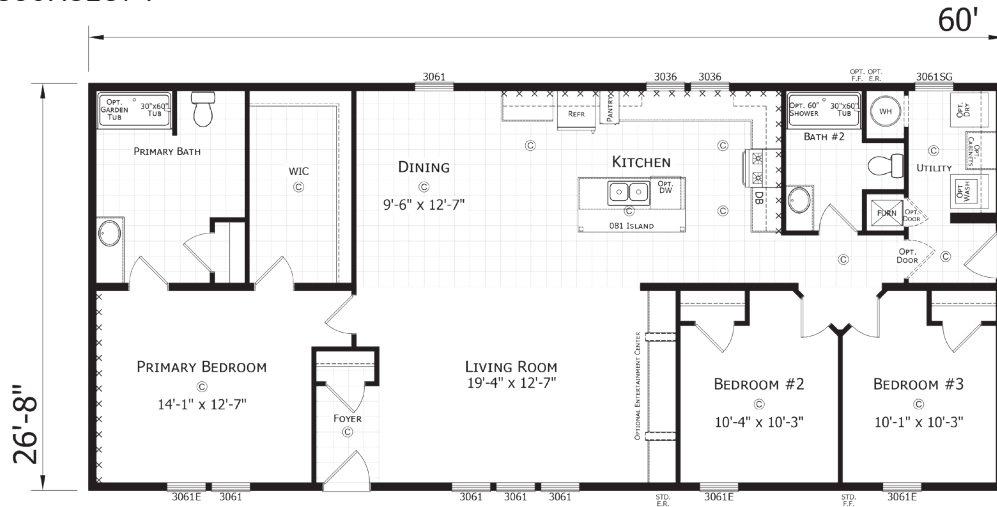
Opt. Double Island

PARAMOUNT 28' Sectional Homes

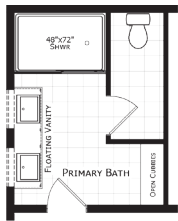
ODYSSEY

3 BED • 2 BATH • 1600 SQ. FT.

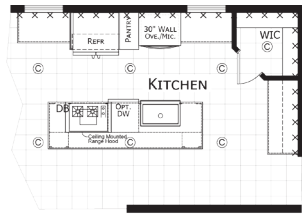
2860H32394



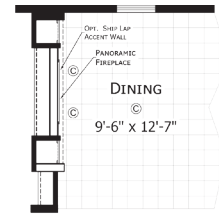
Also available
in a 28' x 68'



Opt. Primary Bath



Opt. Odyssey Kitchen



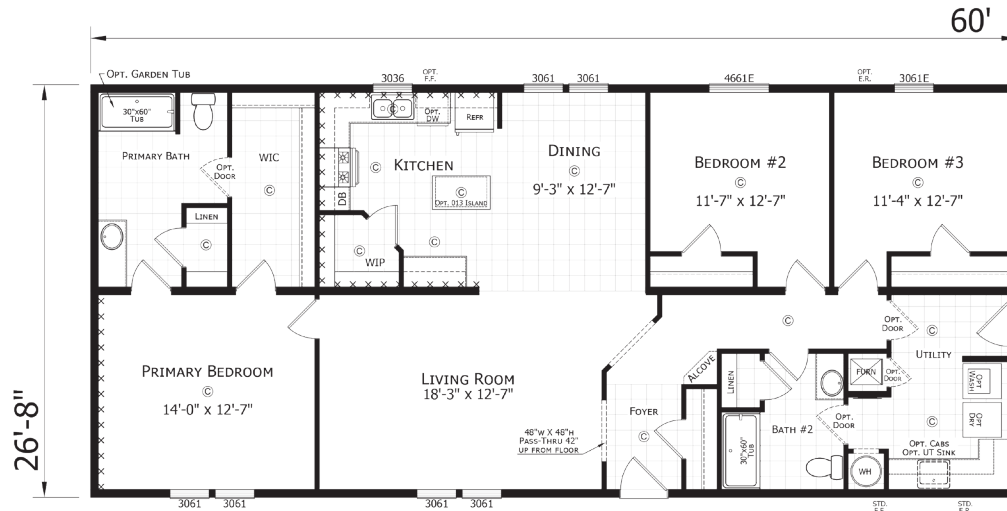
Opt. Fireplace/Ent. Center

PARAMOUNT 28' Sectional Homes

MYRTLE

3 BED • 2 BATH • 1600 SQ. FT.

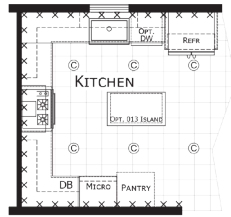
2860H32308



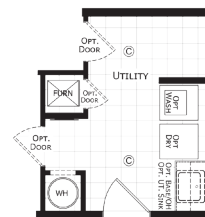
Opt. Master Bath



Opt. Serenity Shower



Opt. Ultimate Kitchen 2



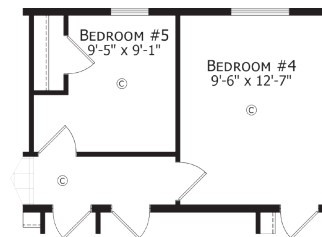
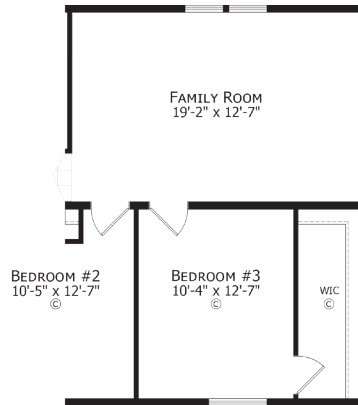
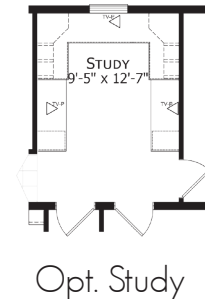
Opt. Door Location
Requires Patio Door in Dining Room

PARAMOUNT 28' Sectional Homes

ALBERTA

4 BED • 2 BATH • 1707 SQ. FT.

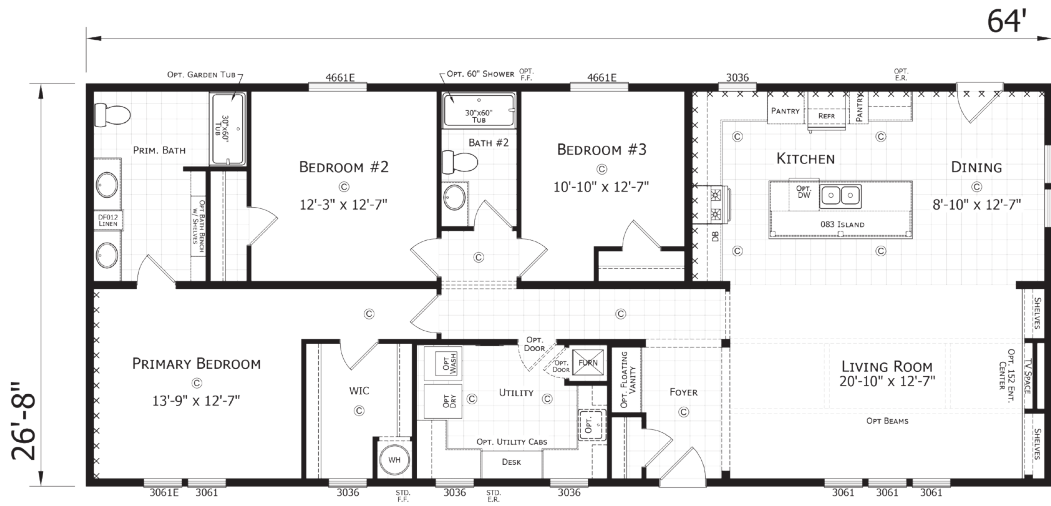
2864H42177



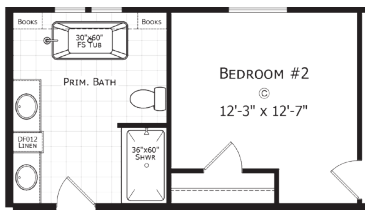
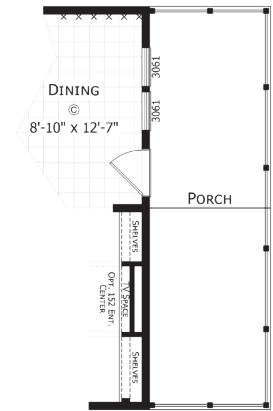
PARAMOUNT 28' Sectional Homes

FILLMORE ■ 3 BED • 2 BATH • 1707 SQ. FT.

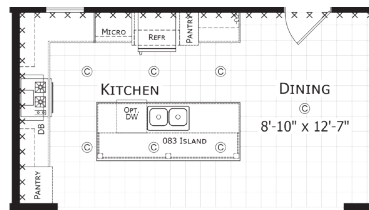
2864H32060



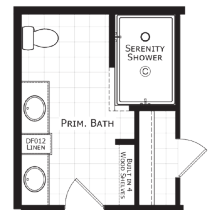
Opt. Porch



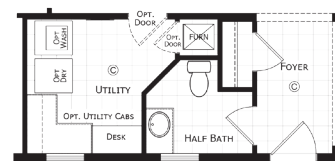
Opt. Master Bath



Opt. Ultimate Kitchen 2



Opt. Serenity Bath



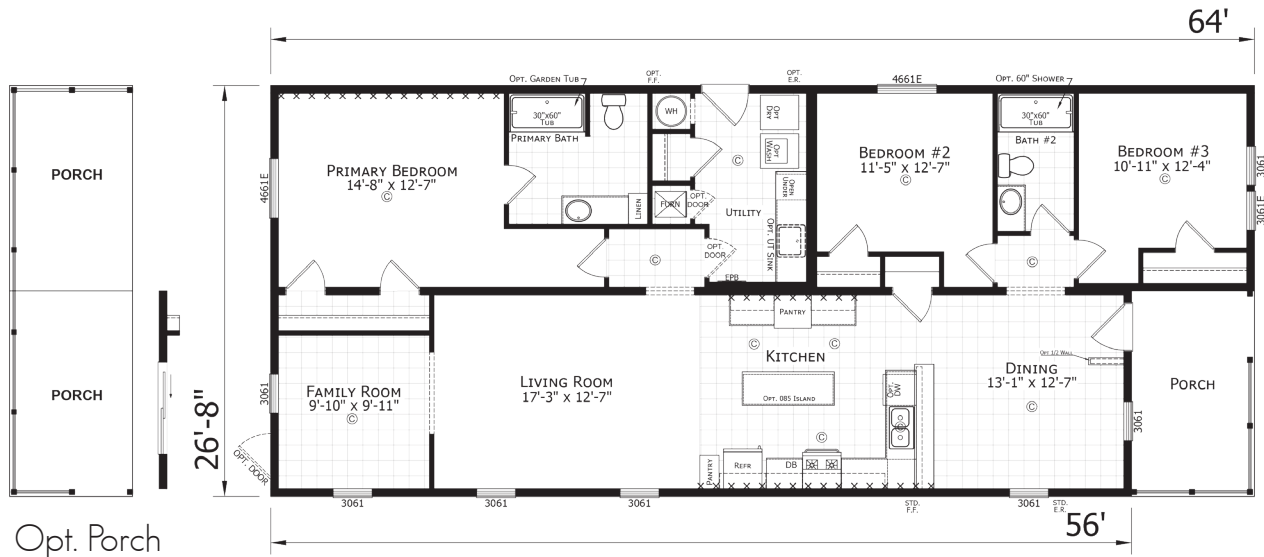
Opt. Half Bath

PARAMOUNT 28' Sectional Homes

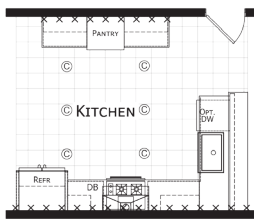
GEORGETOWN

3 BED • 2 BATH • 1600 SQ. FT.

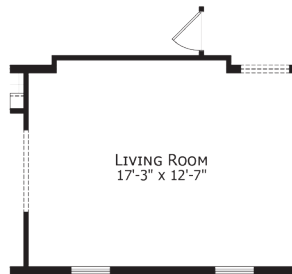
2864H32101



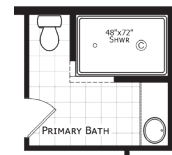
Opt. Porch



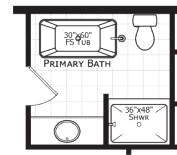
Opt. Ultimate Kitchen 2



Opt. Family Room Offset



Opt. Serenity Bath



Opt. Primary Bath

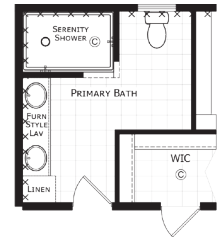
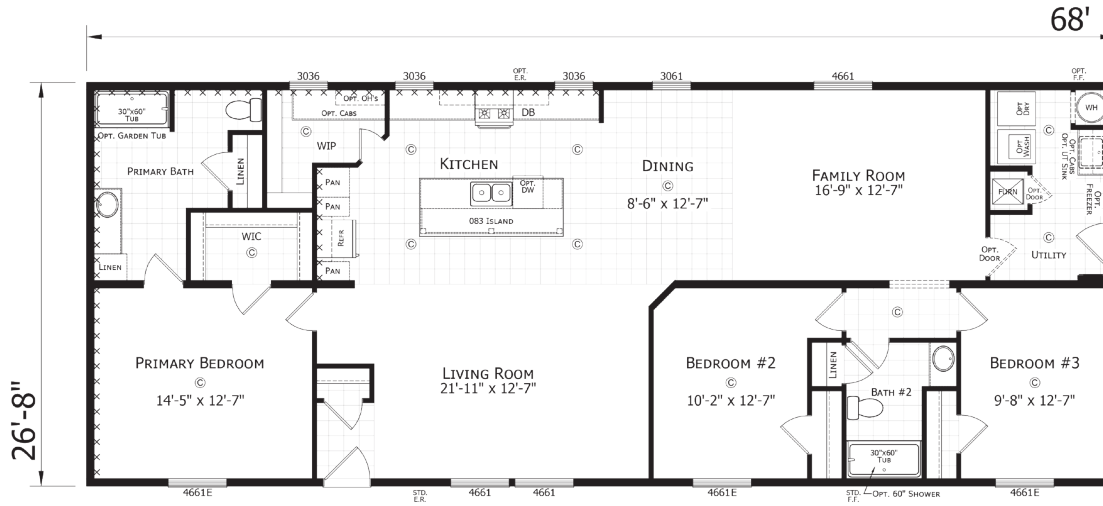
PARAMOUNT 28' Sectional Homes

STAFFORD

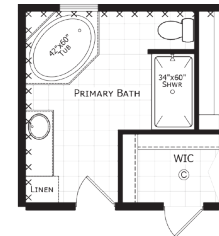
3 BED • 2 BATH • 1813 SQ. FT.

Also available
in a 28' x 72'

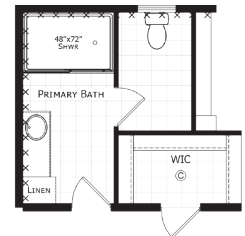
2868H32179



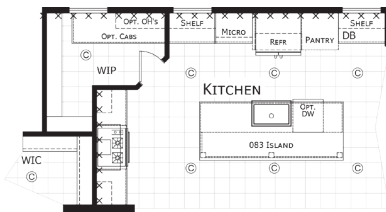
Opt. Serenity Bath



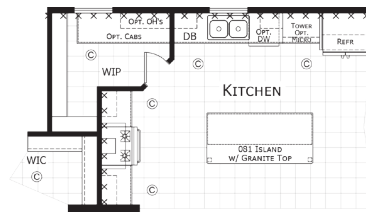
Opt. Master Bath



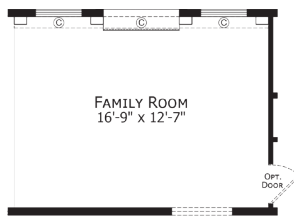
Opt. Luxe Shower



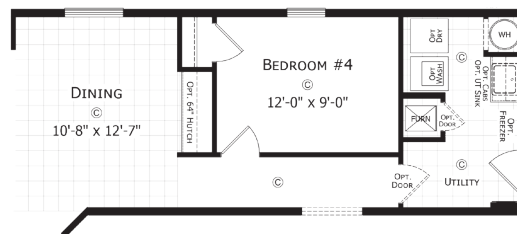
Opt. Ultimate Kitchen 2



Opt. Summit Kitchen



Opt. Ent. Wall
Requires Patio Door in Dining Room



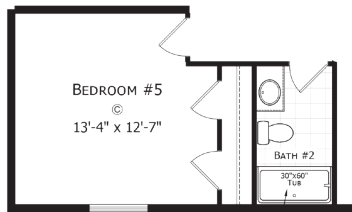
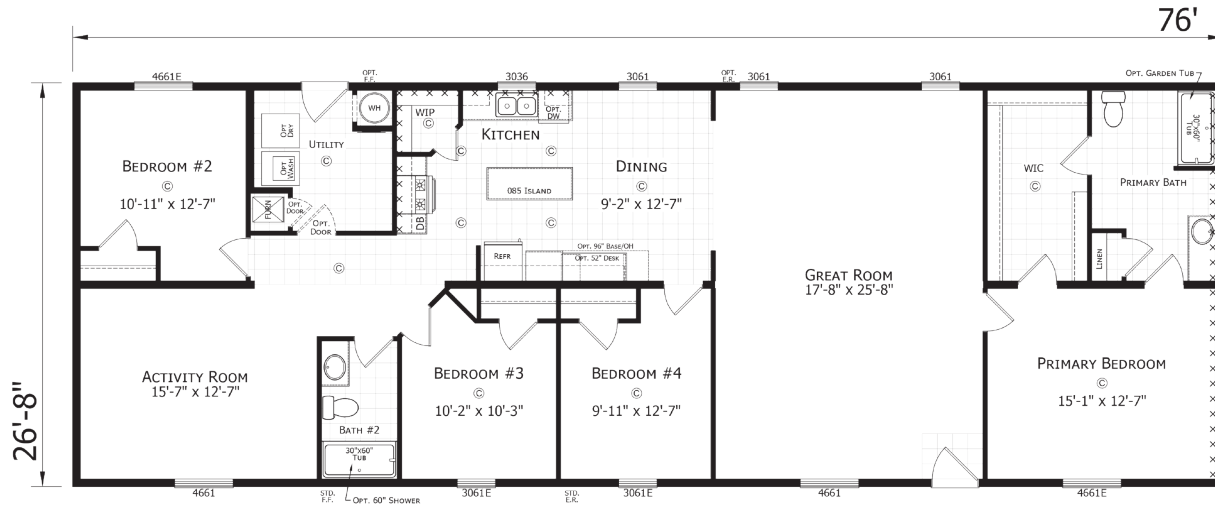
Opt. Bedroom 4

PARAMOUNT 28' Sectional Homes

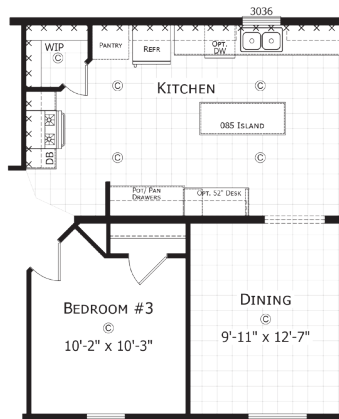
BALDWIN

4 BED • 2 BATH • 2027 SQ. FT.

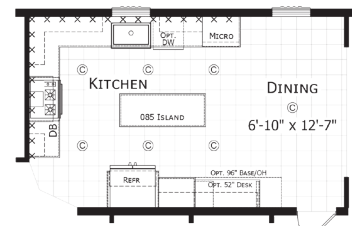
2876H42180



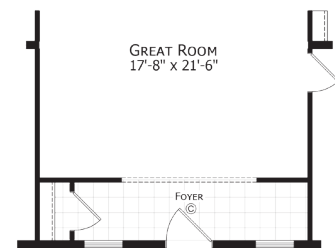
Opt. Bedroom 5



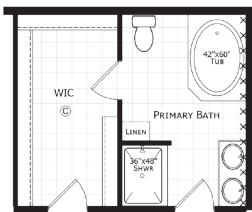
Opt. Kitchen w/ Formal Dining



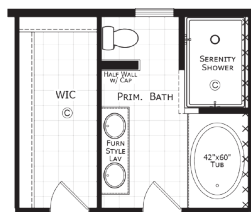
Opt. Ultimate Kitchen 2



Opt. Foyer



Opt. Primary Bath



Opt. Serenity Bath

REDMAN  HOMES®

CHAMPION®
HOME BUILDERS

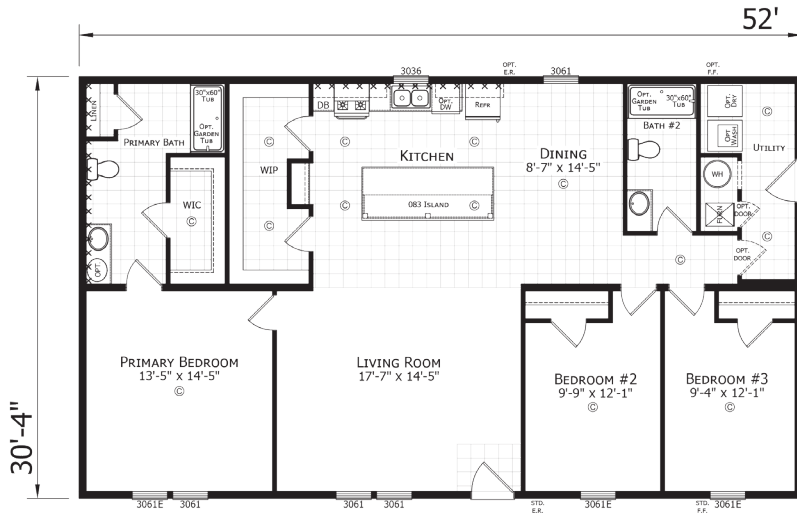


PARAMOUNT 32' Sectional Homes

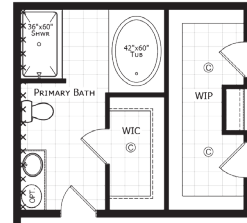
THORNTON

3 BED • 2 BATH • 1577 SQ. FT.

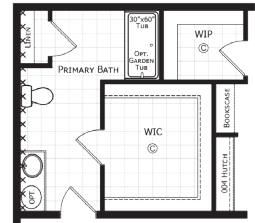
3252H32377



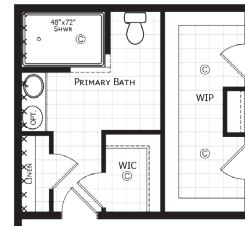
Also available in a 32' x 56'



Opt. Bath 1



Opt. Bath 2

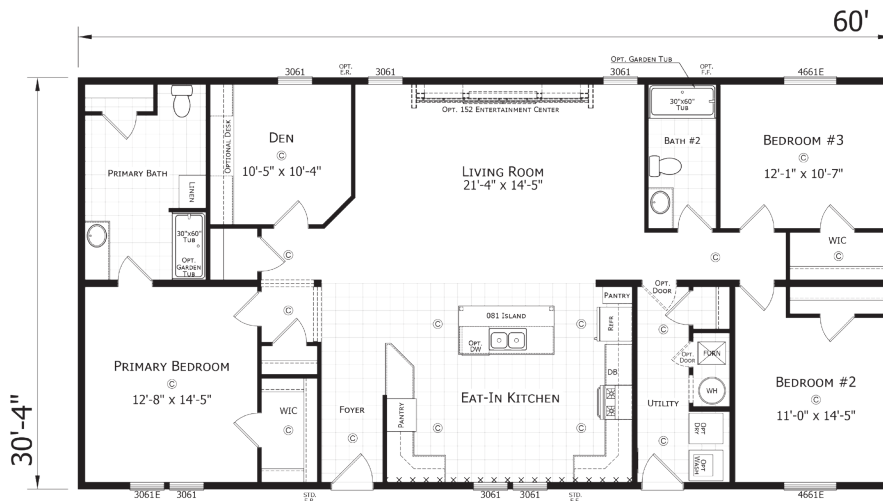


Opt. Serenity Bath

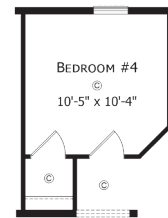
SHELBY

3 BED • 2 BATH • 1820 SQ. FT.

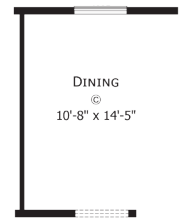
3260H32181



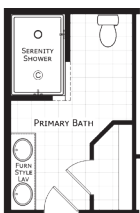
Also available in a 32' x 64' and a 32' x 68'



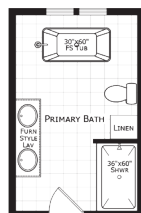
Opt. Bedroom 4



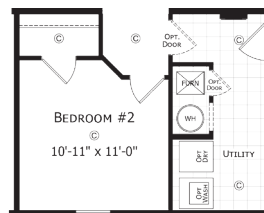
Opt. Dining Room



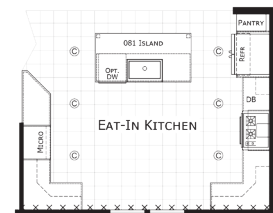
Opt. Serenity Bath



Opt. Master Bath



Opt. End Entry



Opt. Ultimate Kitchen 2

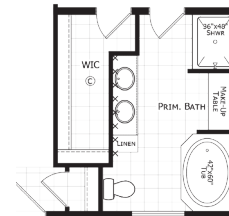
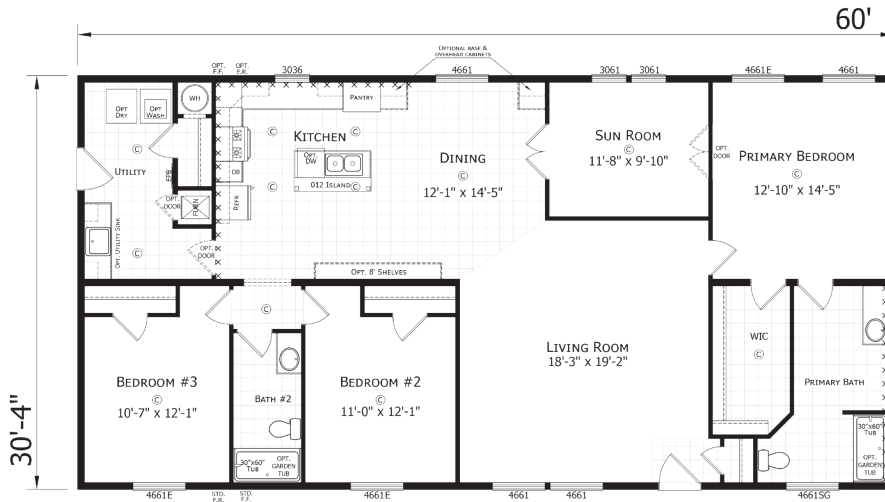
PARAMOUNT 32' Sectional Homes

FENTON

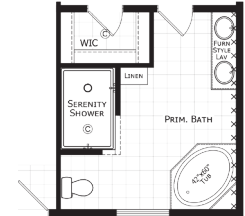
3 BED • 2 BATH • 1820 SQ. FT.

**Also available
in a 32' x 64' and a 32' x 68'**

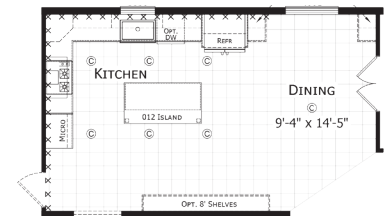
3260H32182



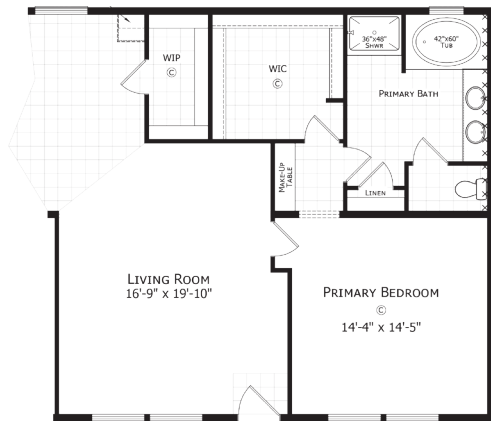
Opt. Primary Bath 1



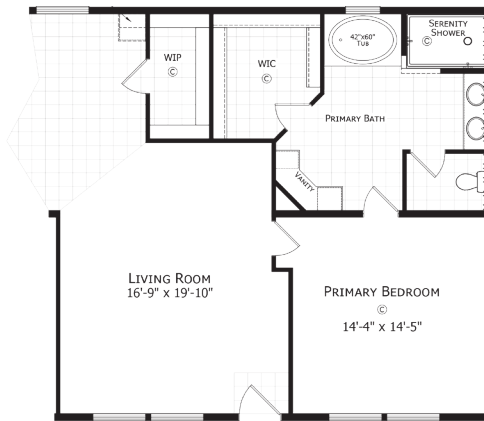
Opt. Serenity Bath 2



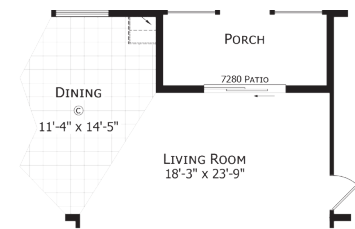
Opt. Ultimate Kitchen 2



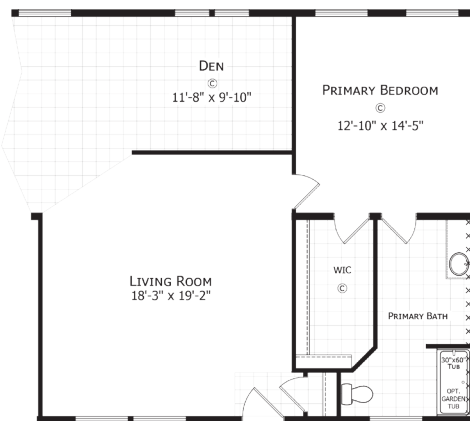
Opt. Primary Bath 3
No Sunroom



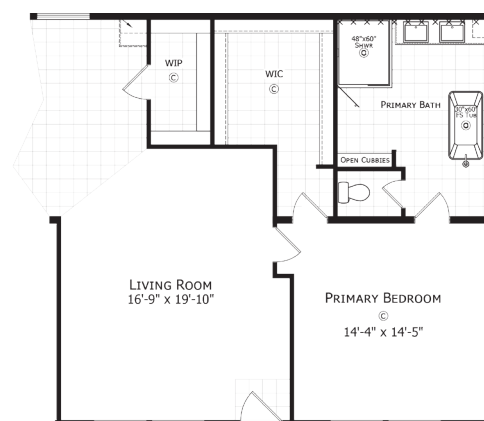
Opt. Serenity Bath 1
No Sunroom



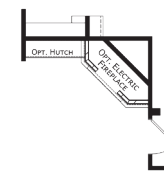
Opt. Porch



Opt. Den



Opt. Radiant Spa Bath
No Sunroom



Opt. Electric Fireplace
and Opt. Hutch
(with Primary Bath 3,
Serenity Bath 1 or Radiant Bath)

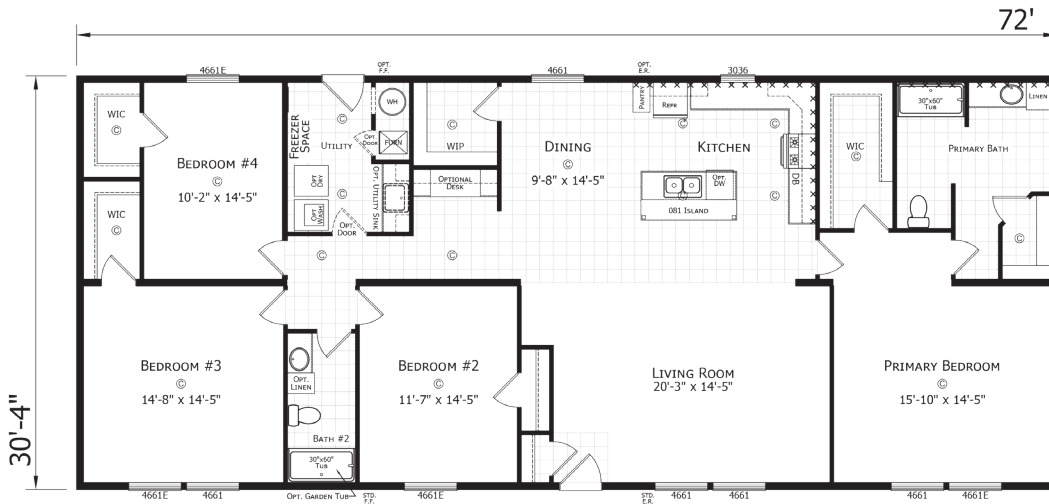
PARAMOUNT 32' Sectional Homes

APOLLO

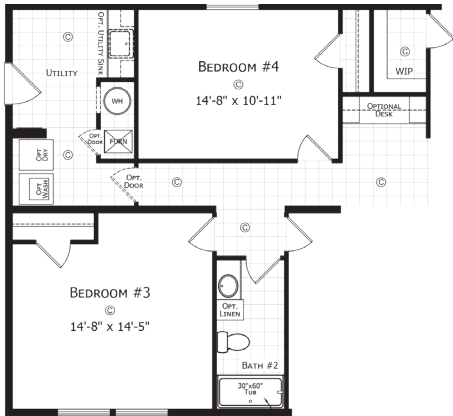
4 BED • 2 BATH • 2184 SQ. FT.

**Also available
in a 32' x 76'**

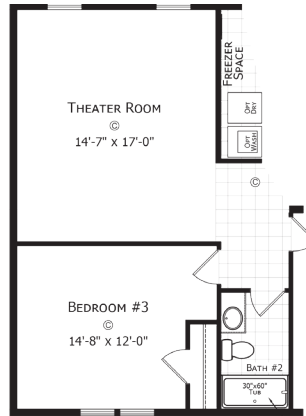
3272H42185



Opt. Closet Organizer



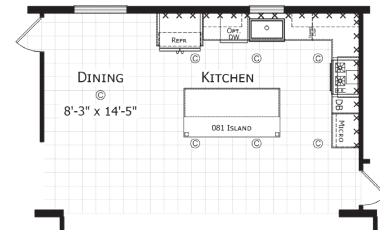
Opt. End Entry
N/A w Opt. Theater Room /Butler Pantry



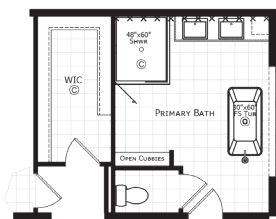
Opt. Theater Room



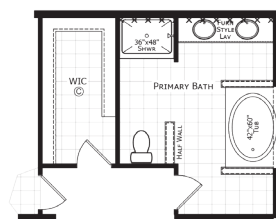
Opt. Ent. Center



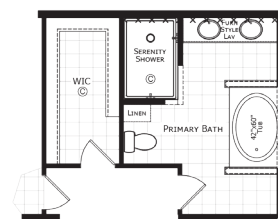
Opt. Ultimate Kitchen 2



Opt. Radiant Spa Bath



Opt. Primary Bath

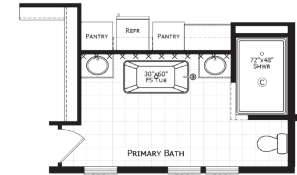
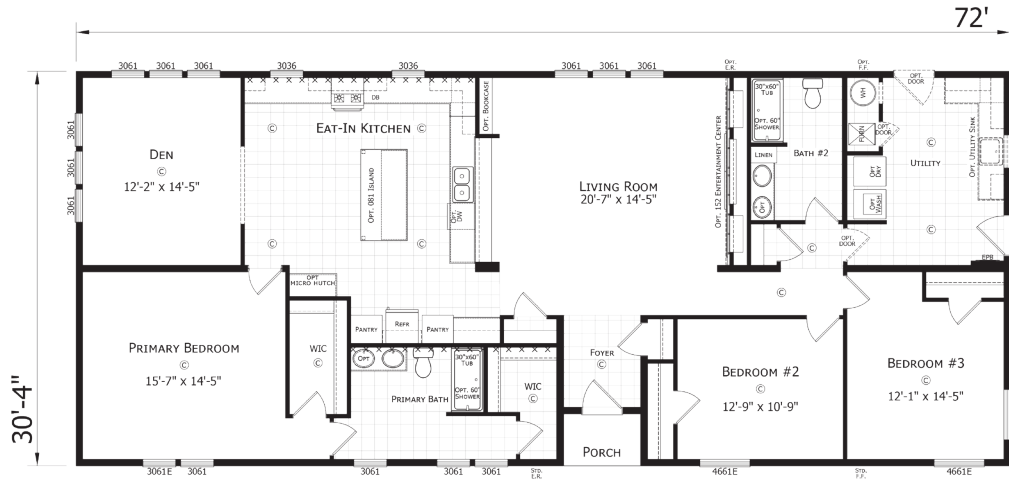


Opt. Serenity Bath

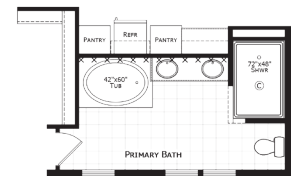
PARAMOUNT 32' Sectional Homes

WINSTON ■ 3 BED • 2 BATH • 2160 SQ. FT.

3272H32186

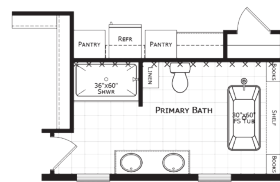
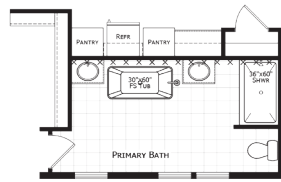


Opt. Serenity Bath



Opt. Serenity Bath 2

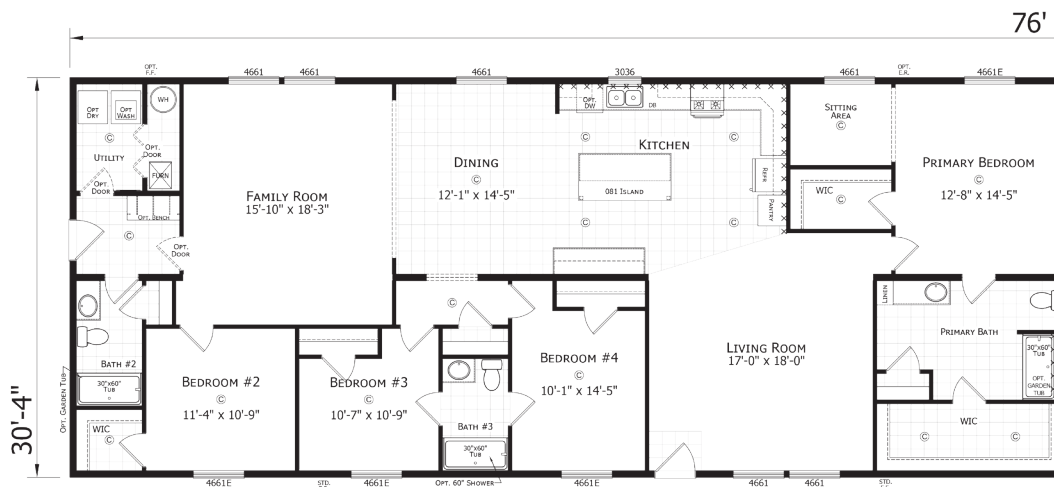
Opt. Primary Bath



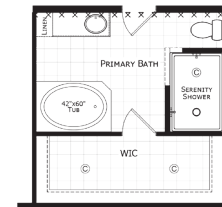
Opt. Primary Bath 2

RED CEDAR ■ 4 BED • 3 BATH • 2305 SQ. FT.

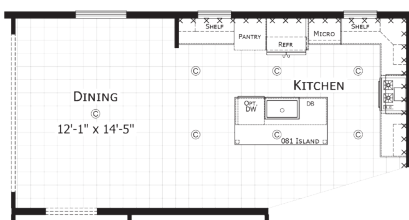
3276H43187



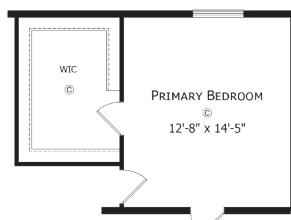
Opt. Utility Sink



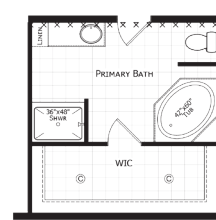
Opt. Serenity Bath



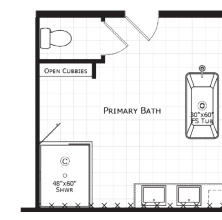
Opt. Ultimate Kitchen 2



Opt. Walk-In Closet



Opt. Primary Bath



Opt. Radiant Spa

REDMAN  HOMES.

PARAMOUNT STANDARD FEATURES



STRUCTURAL

- Recessed Frame
- Detachable Hitch
- 48" OC Outriggers
- 2 x 4 Exterior Sidewalls - 16" OC
- (28') 2 x 6 Floor Joist - 16" OC
- (32') 2 x 8 Floor Joist - 16" OC
- R-11 Sidewall Insulation
- R-28 Roof Insulation
- 5/8" OSB Decking
- 7/16" OSB Roof Sheathing
- 30lb PSF Roof Load

INTERIOR FINISH

- Main Panel T/O
 - Factory Designer Choice
- Accent Panels - VBP (Choice 1 Pattern Per House)
- 13 oz. Carpet
- Tack Strip
- 5lb Rebond Carpet Pad
- Linoleum - Choice of Color
- Wire Shelving in Closets
- Smoke Alarms w / Battery Backup
- Flat Wrapped Door Casing
- Flat Ceiling Cove
- Wrapped Door Jambs
- Wrapped Window Jambs
- Formica Countertops - Choice of Color
- Self Edge Countertops
- Finished Closets T/O

EXTERIOR

- 8' Sidewalls
- Nominal 3/12 Roof Pitch
- 25 Year Shingles
- Storm Board Sheathing
- Double 4" Vinyl Siding
- White Aluminum Fascia
- White Vented Soffit
- Black Torch Light - Exterior Doors
- Upgrade Ice & Water Shield

KITCHEN / BATHROOMS

- Black Standard Electric Range
- Black 30" Range Hood
- Black 18 CF Over/Under Refrigerator
- 30" O/H Cabinets w / Fixed Shelf
- Wrapped Shaker Cabinets
- Lined Overhead Cabinets
- Corner Kitchen Cabinet (VBP)
- Center Shelves in Base (Kitchen VBP)
- Wrapped Cabinet Stiles
- Single Bank of Drawers - Kitchen
- Shelf Over Refrigerator
- Extendable Deluxe Drawer Guides
- 7" Stainless Steel Kitchen Sink
- Metal Faucets T/O
- 60" Fiberglass Tub/Shower Combo
- Round Commode
- Single Bank of Drawers - Baths - VBP
- China Lav Bowls
- 30" Lavs (VBP)
- Bath Fan - No Light

WINDOWS & DOORS

- 6 Panel Residential Front Door - no storm
- 6 Panel Residential Rear Door - no storm
- Low "E" Vinyl Grid Windows
- 2-Panel White Raised Panel Interior Doors
- 2-Mortised Hinges
- Black Hinges & Interior Door Knobs
- 3 Side Door Stop

HEATING / PLUMBING / ELECTRICAL

- Electric Furnace
- Aluminum Heat Ducts
- In-Line Floor Registers
- 200 AMP Service
- (1) Exterior Recept
- All Copper Wiring
- Plumb for Washer
- Wire for Electric Dryer
- PEX Water Lines
- 30 Gallon Electric Water Heater
- (1) Frost Free Exterior Faucet
- Main Water Shut Off
- Water Shut Offs Throughout
- Can Lights Per Print
- 3 Bulb Strip Lights @ Bath Vanities
- Programmable Thermostat
- Extra Conduit Drop In Panel Box

VBP=Varies by plan

ALL Redman Homes are backed by a 7 YEAR WARRANTY

Due to continuous product development and improvement, prices, specifications and material are subject to change without notice or obligation. Square footage and other dimensions are approximate. Included images are artist renderings and are not intended to be an accurate representation of the homes. Renderings and Floor Plans may be shown with optional features and / or third party additions that may not be available in all regions or situations. Exterior Renderings may include onsite builder built options not offered by Champion Home Builders, Inc.



308 Sheridan Drive
Topeka, IN 46571
www.redmanhomesofindiana.com

CHAMPION[®]
HOME BUILDERS