



THE  
*Residence*

2024

MODULAR HOMES

The logo for Clayton Middlebury features a green roof-like shape above the word "Clayton" in a bold, blue, sans-serif font. Below "Clayton" is the word "middlebury" in a smaller, blue, lowercase sans-serif font.

## MODULAR HOMES

# THE Residence

## STANDARD FEATURES

### INTERIOR

25 OZ. SHAW CARPET WITH 5# REBOND PAD & TACK STRIP  
8' FLAT CEILINGS THROUGHOUT  
STIPPLE CEILING FINISH  
FINISHED CEILING JOINTS  
1/2" DRYWALL THROUGHOUT  
BUILDER GRADE PRIMER THROUGHOUT  
"CLOSET MAID" VENTILATED WIRE SHELVING IN CLOSETS  
LED RECESSED CAN LIGHTS THROUGHOUT  
3" DOOR & WINDOW CASING AND 3" BASE TRIM  
2-PANEL WHITE INTERIOR DOORS  
32" INTERIOR DOORS WHERE APPLICABLE

### KITCHEN

30" KITCHEN HARDWOOD CABINETS W/CROWN  
LUMBER CORE CABINET STILES  
CONCEALED EUROPEAN STYLE COUNTER-SUNK HINGES  
3/4" ADJUSTABLE SHELVES IN OVERHEAD CABINETS  
8" STAINLESS STEEL DOUBLE BOWL KITCHEN SINK  
PFISTER METAL FAUCETS  
FRIGIDAIRE APPLIANCES  
30" FREE-STANDING ELECTRIC RANGE  
18 CU FT FROST FREE REFRIGERATOR W/ICEMAKER  
4" LAMINATE BACKSPASH  
BANK OF DRAWERS  
DRAWER OVER DOOR CONSTRUCTION  
GFCI PROTECTED RECEPTACLES

### BATHS

60" FIBERGLASS TUB/SHOWER IN PRIMARY BATH & BATH 2  
HIGH PRESSURE LAMINATED COUNTERTOPS & BACKSPASH  
W/MICROBAN ANTIMICROBIAL TECHNOLOGY  
PORCELAIN COMMODES  
SQUARE PORCELAIN LAVS  
POWER EXHAUST FANS - ENERGY STAR  
GFCI PROTECTED RECEPTACLES  
36" TALL VANITIES IN BOTH BATHS  
PFISTER METAL FAUCETS  
BANK OF DRAWERS IN PRIMARY BATH

### EXTERIOR

NOMINAL 3/12 ROOF PITCH  
ARCHITECTURAL SHINGLES  
METAL FACIA  
VINYL VENTED SOFFIT  
36" 6-PANEL FRONT DOOR W/DEADBOLT  
36" 6-PANEL REAR DOOR W/DEADBOLT

### EXTERIOR - continued

EXTERIOR LIGHT AT FRONT & REAR DOOR  
4 1/2" DUTCH LAP VINYL SIDING  
(2) EXTERIOR GFI RECEPTACLES  
(2) EXTERIOR FROST FREE FAUCETS  
ARGON LOW E VINYL WINDOWS W/3 OVER CLEAR GRIDS  
15" SHUTTERS (FDS)

### UTILITIES

200 AMP 40/40 SERVICE PANEL  
CARRIER ELECTRIC FURNACE  
ECOBEE WIFI SMART THERMOSTAT  
40 GALLON WATER HEATER  
WATER HEATER PAN WITH EXTERIOR DRAIN  
PEX PLUMBING  
WIRE & PLUMB FOR WASHER  
WIRE & VENT FOR DRYER  
RECESSED WHOLE HOUSE WATER SHUT OFF  
WATER SHUT OFFS THROUGHOUT  
GFI PROTECTED RECEPTACLES IN KITCHEN AND BATHS  
FURNACE CLOSE-OFF DOOR  
SMOKE DETECTORS  
CONDUIT DROP FOR A/C

### CONSTRUCTION

T&G OSB FLOOR DECKING GLUED & FASTENED  
2" X 6" EXTERIOR WALLS  
RIDGE VENT ROOF VENTING  
LINKED SMOKE DETECTORS W/BATTERY BACK-UP IN MAIN  
LIVING AREA & ALL BEDROOMS  
7/16" OSB EXTERIOR SHEATHING W/WINDWRAP  
KWIKSET INTERIOR & EXTERIOR DOOR KNOBS  
W/MICROBAN ANTIMICROBIAL TECHNOLOGY  
SMOKE/CARBON MONOXIDE DETECTOR  
2" X 10" FLOOR JOISTS - 16" O.C.  
R-21 WALL INSULATION  
R-49 ROOF INSULATION  
FIBERGLASS HEAT DUCTS  
2" X 4" INTERIOR WALLS  
2" X 4" MATELINE WALL  
METAL CROSS BRIDGING  
30# ROOF LOAD  
WHOLE HOUSE VENTILATION FAN  
\* WISCONSIN HAS NO PLUMBING

MODULAR HOMES

THE  
*Residence*

INDEX

NAME	MODEL	SIZE	SQ. FT.	BEDROOMS	BATHS	PAGE
Spring Meadow	4828-MS007-1	48x28	1296	3	2	4
Somerset Dr	5228-MS012-1	52x28	1404	3	2	5
Center St	5228-MS014-1	52x28	1404	3	2	6
Elm St	5628-MS018-1	56x28	1512	3	2	7
Hill St	5628-MS020-1	56x28	1512	3	2	8
Quiet Harbor	5628-MS046-1	56x28	1512	3	2	9
Michigan Ave	6028-MS026-1	60x28	1620	3	2	10
Tulip Blvd	6028-MS047-1	60x28	1620	3	2	11
Tompkins Blvd	6428-MS029-1	64x28	1728	3	2	12
Field Point	6428-MS030-1	64x28	1728	3	2	13
Farmington Rd	6828-MS048-1	68x28	1836	4	2	14
Madison Ave	6030-MS037-1	60x30	1800	3	2	15
Highland Park	6430-MS038-1	64x30	1920	3	2.5	16

MODEL NUMBER:

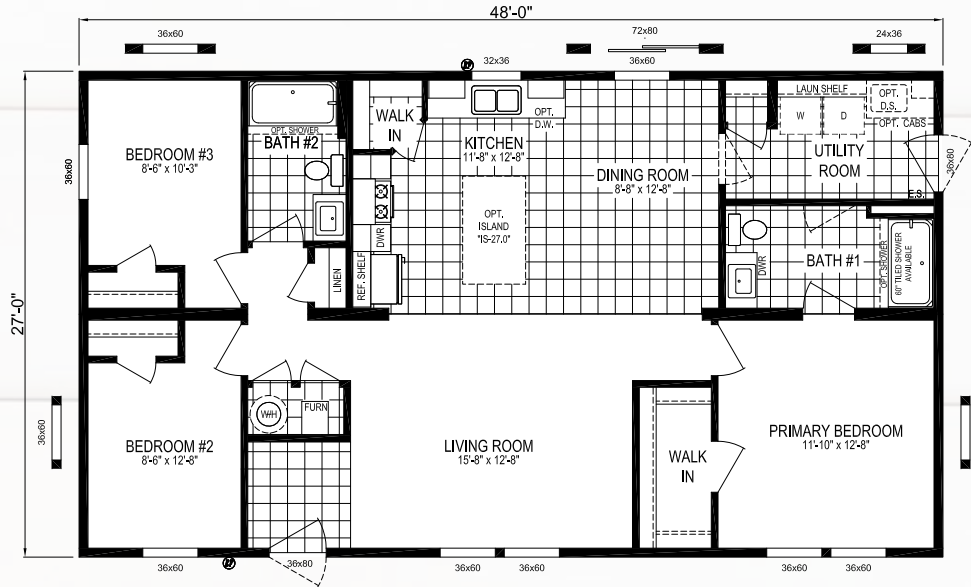
# 4828-MS007-1

48 x 28 | 1296 Sq. Ft. 3 Bed | 2 Bath

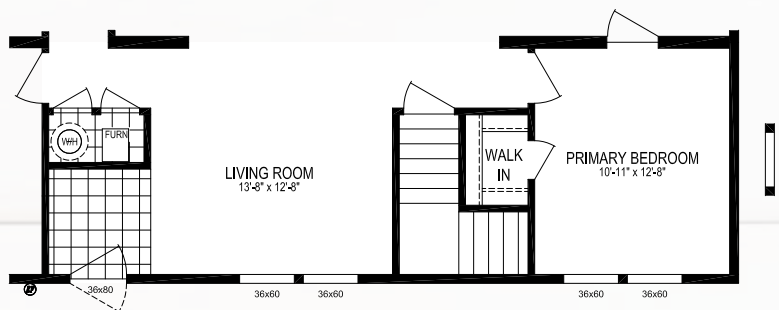
CLICK HERE FOR A 3D  
TOUR OF THIS FLOORPLAN!



## SPRING MEADOW



**QUARTZ**café



OPTIONAL BASEMENT STAIRWELL

CLICK HERE FOR A 3D TOUR OF THIS FLOORPLAN!

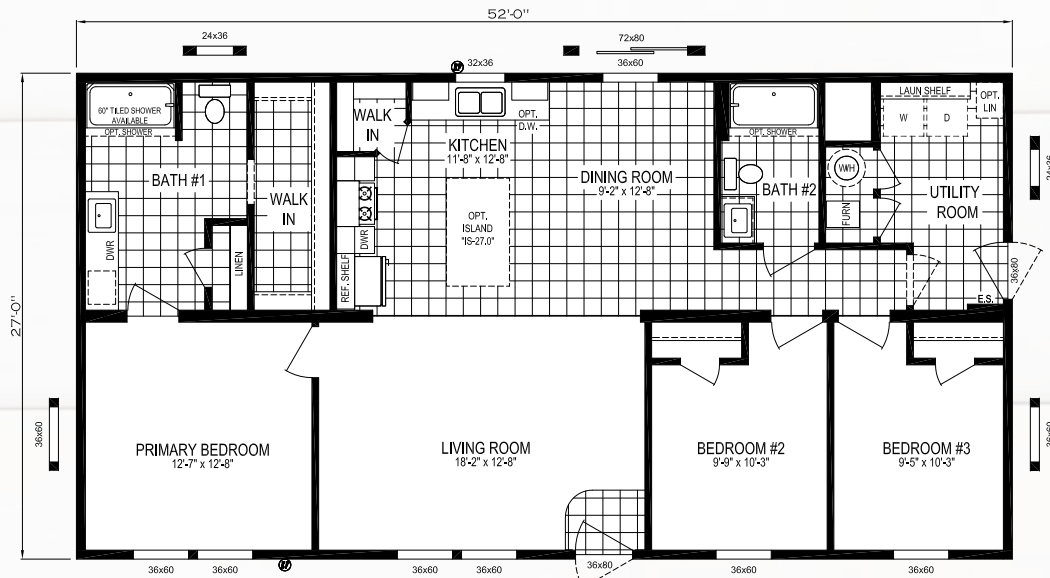


MODEL NUMBER:

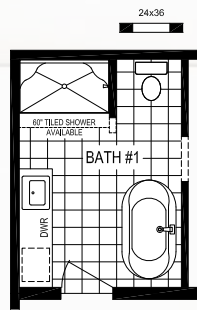
# 5228-MS012-1

52 x 28 | 1404 Sq. Ft. 3 Bed | 2 Bath

## SOMERSET DR



QUARTZcafé



DELUXE BATH OPTION "A"



OPTIONAL BASEMENT STAIRWELL



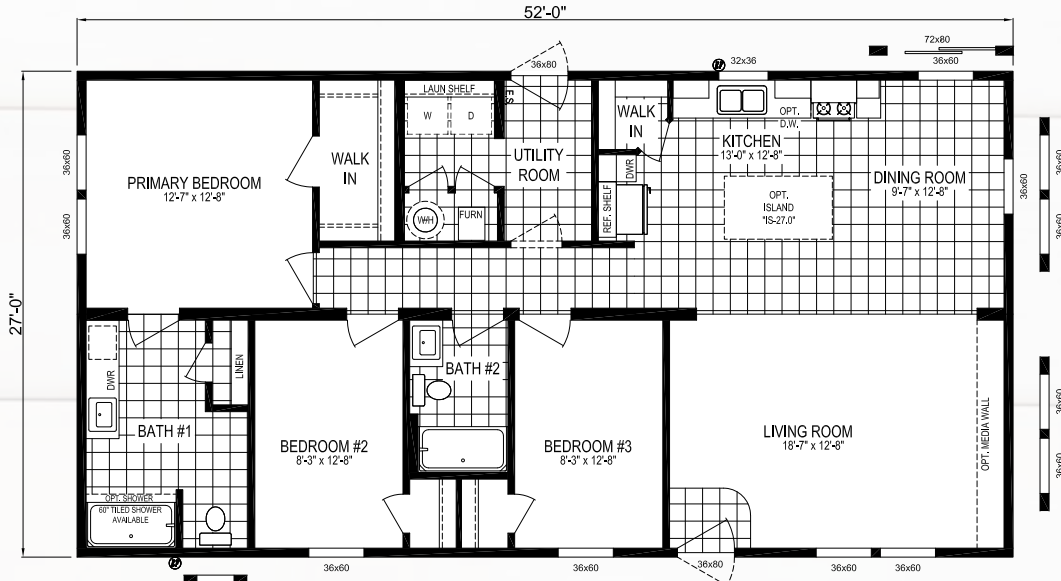
MODEL NUMBER:

# 5228-MS014-1

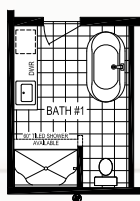
52 x 28 | 1404 Sq. Ft. 3 Bed | 2 Bath

## CENTER ST

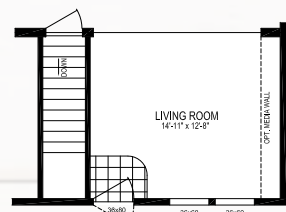
CLICK HERE FOR A 3D TOUR OF THIS FLOORPLAN!



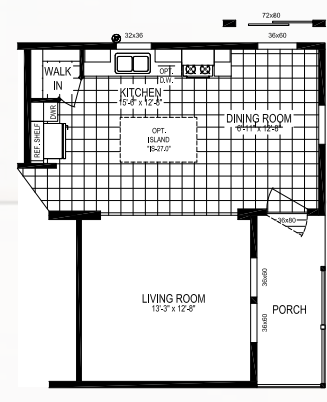
**QUARTZcafé**



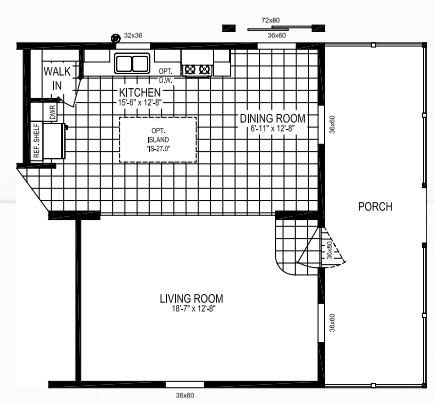
DELUXE BATH OPTION "A"



BASEMENT STAIRWELL OPTION  
(NOT AVAILABLE W/ HALF PORCH OPTION)



END ENTRY W/ HALF FRONT PORCH OPTION  
(NOT AVAILABLE W/ BASEMENT STAIRWELL)



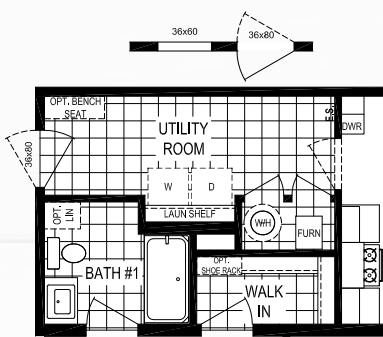
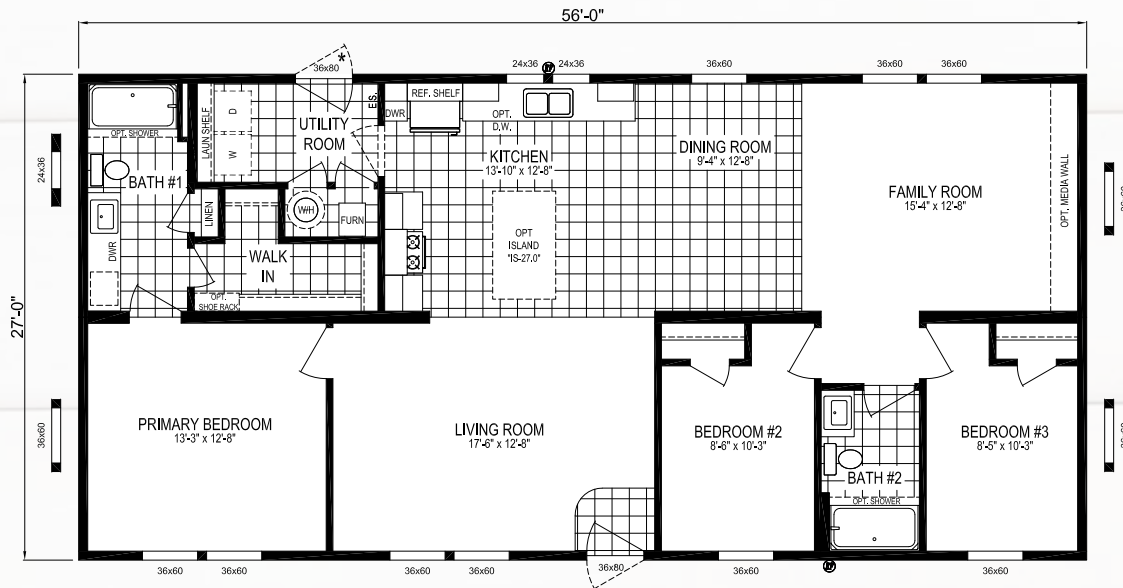
8' PORCH OPTION SHOWN W/ END ENTRY OPTION

MODEL NUMBER:

# 5628-MS018-1

56 x 28 | 1512 Sq. Ft. 3 Bed | 2 Bath

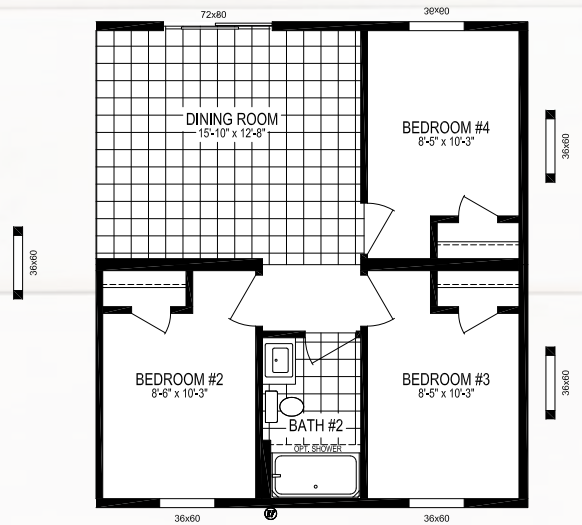
## ELM ST



OPTIONAL END ENTRY



OPTIONAL BASEMENT STAIRWELL



OPTIONAL 4TH BEDROOM

MODEL NUMBER:

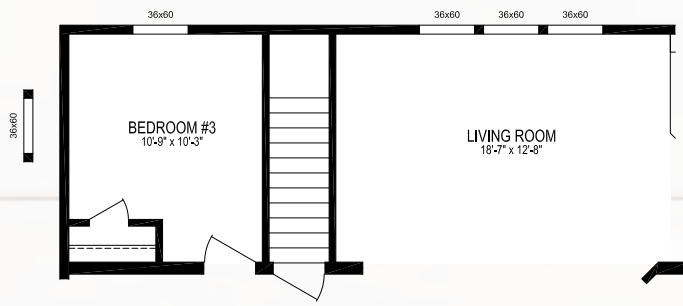
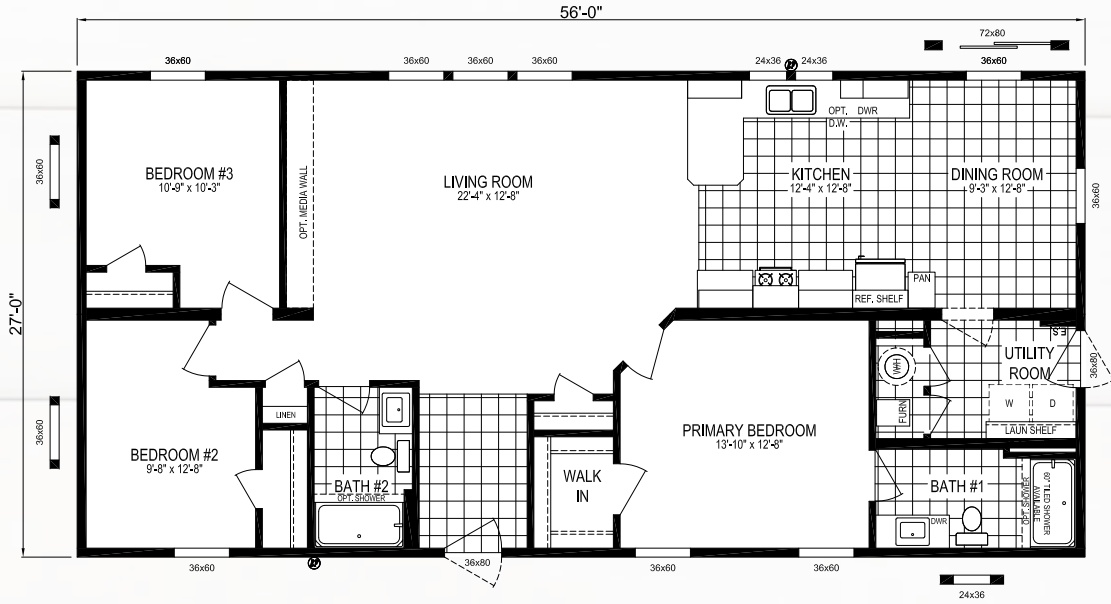
# 5628-MS020-1

56 x 28 | 1512 Sq. Ft. 3 Bed | 2 Bath

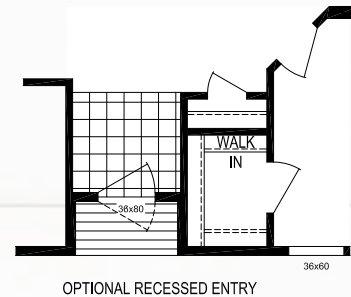
CLICK HERE FOR A 3D TOUR OF THIS FLOORPLAN!



# HILL ST



OPTIONAL BASEMENT STAIRWELL



OPTIONAL RECESSED ENTRY



CLICK HERE FOR A 3D  
TOUR OF THIS FLOORPLAN!

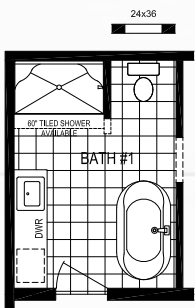
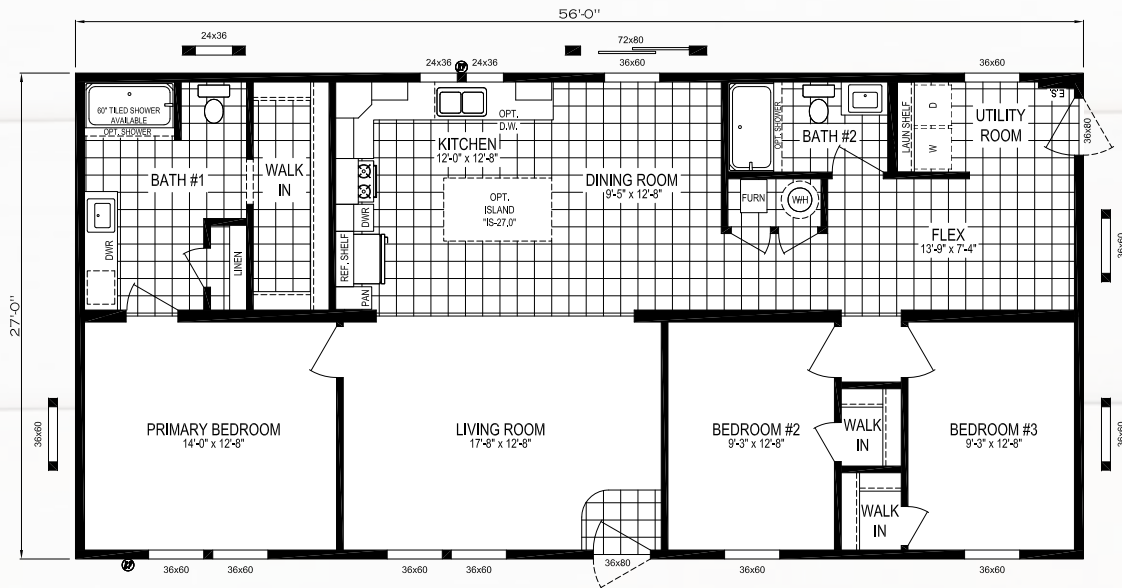


MODEL NUMBER:

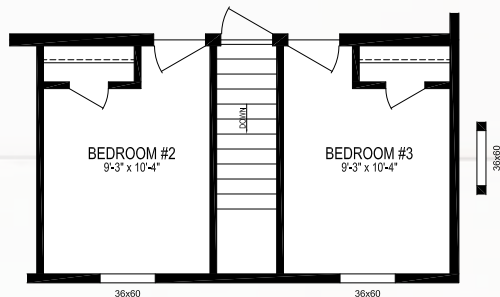
# 5628-MS046-1

56 x 28 | 1512 Sq. Ft. 3 Bed | 2 Bath

## QUIET HARBOR



DELUXE BATH OPTION "A"



OPTIONAL BASEMENT STAIRWELL

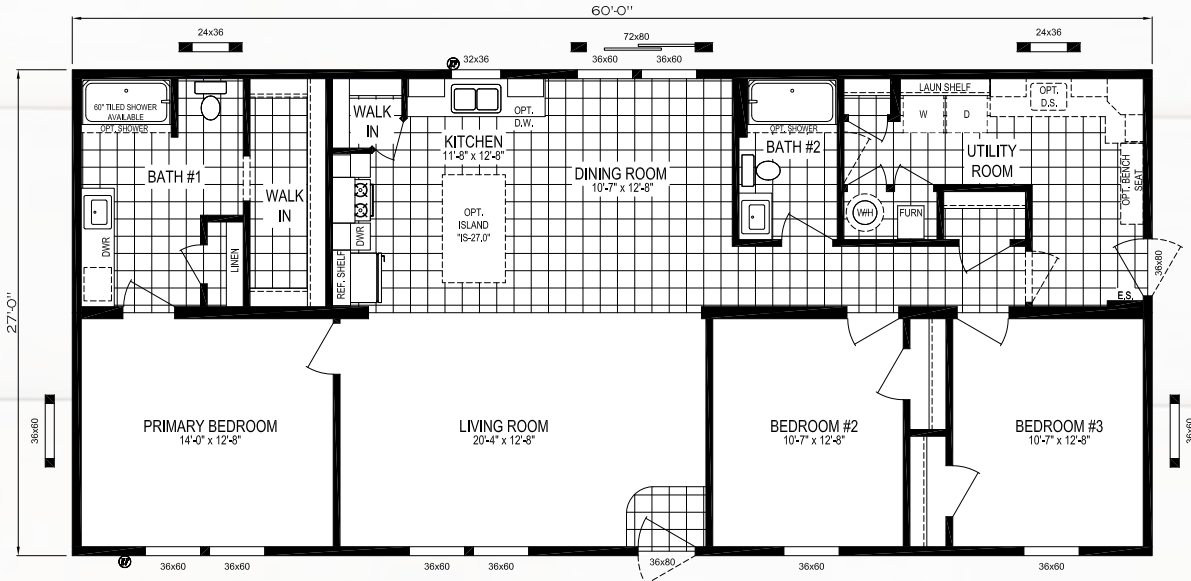


MODEL NUMBER:

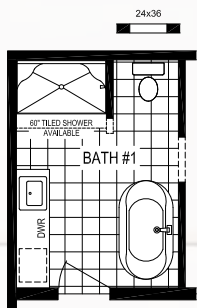
# 6028-MS026-1

60 x 28 | 1620 Sq. Ft. 3 Bed | 2 Bath

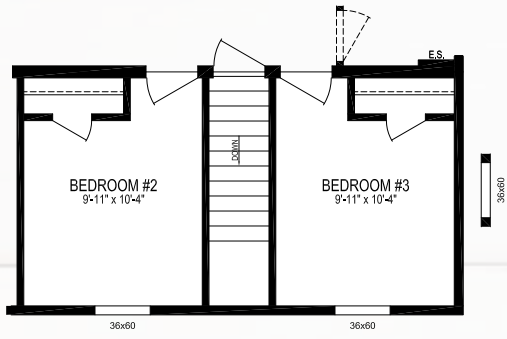
## MICHIGAN AVE



**QUARTZ**café



DELUXE BATH OPTION "A"



OPTIONAL BASEMENT STAIRWELL

CLICK HERE FOR A 3D  
TOUR OF THIS FLOORPLAN!

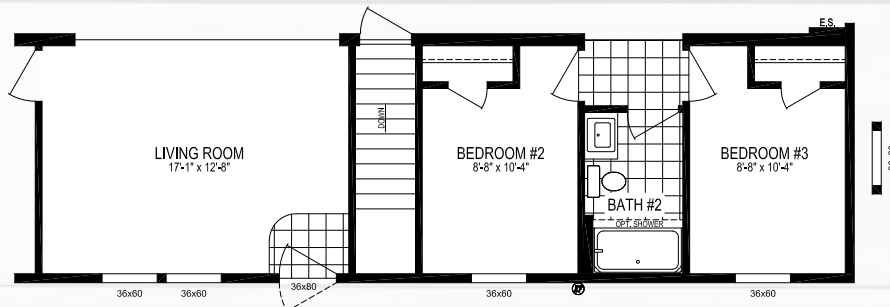
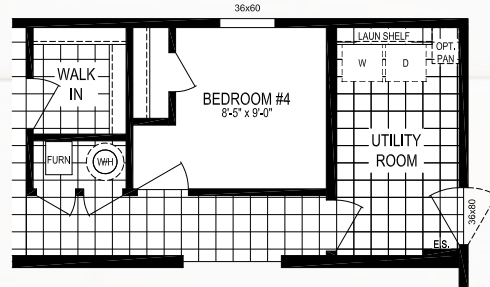
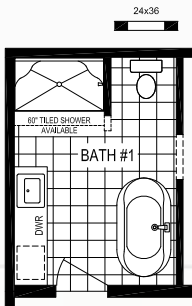
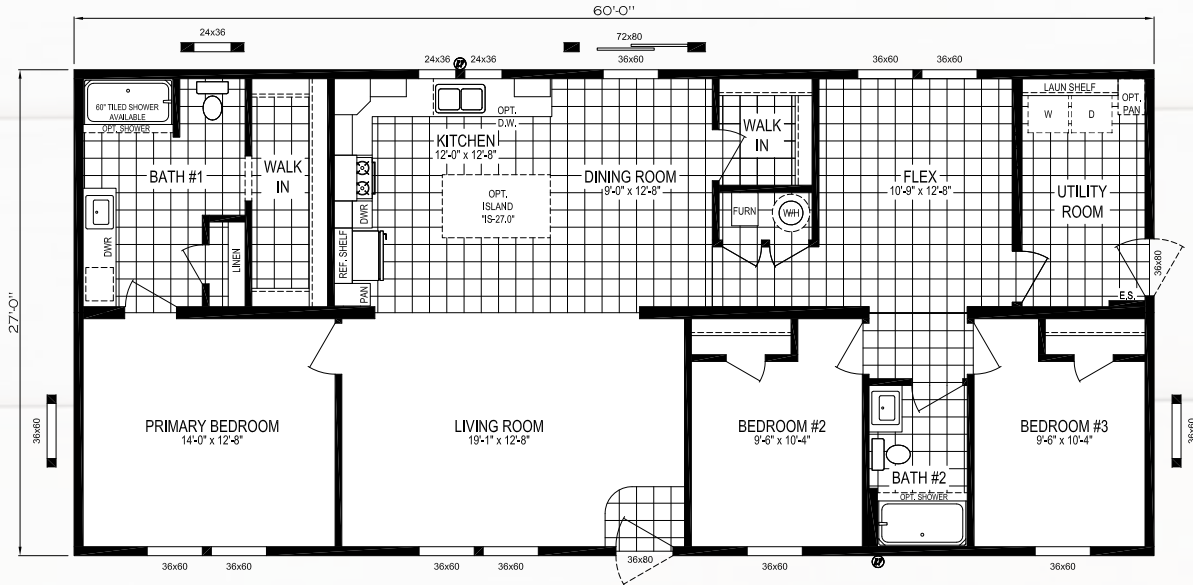


MODEL NUMBER:

# 6028-MS047-1

60 x 28 | 1620 Sq. Ft. 3 Bed | 2 Bath

## TULIP BLVD



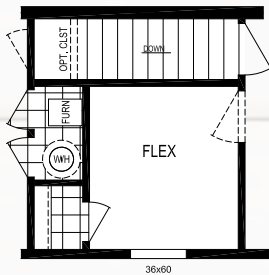
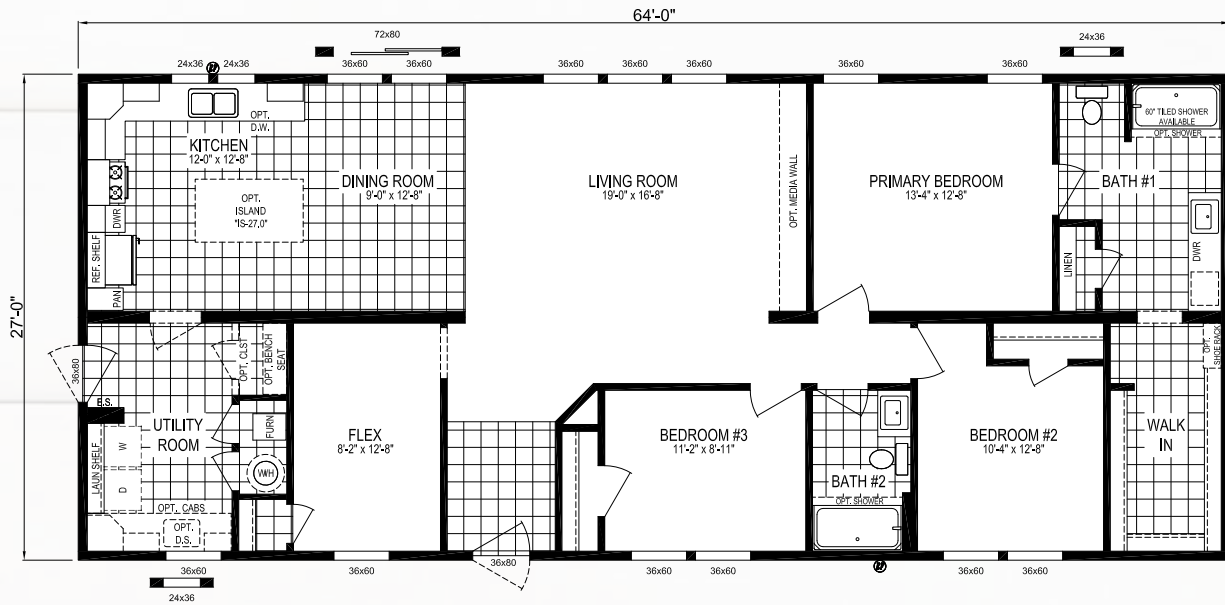
MODEL NUMBER:

# 6428-MS029-1

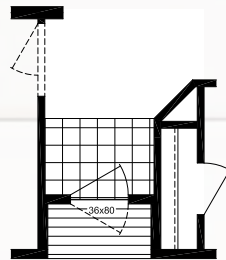
64 x 28 | 1728 Sq. Ft. 3 Bed | 2 Bath

## TOMPKINS BLVD

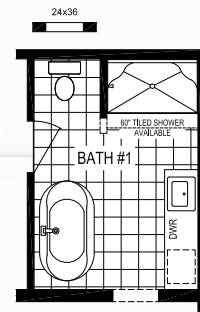
CLICK HERE FOR A 3D TOUR OF THIS FLOORPLAN!



OPTIONAL BASEMENT STAIRWELL



OPTIONAL RECESSED ENTRY



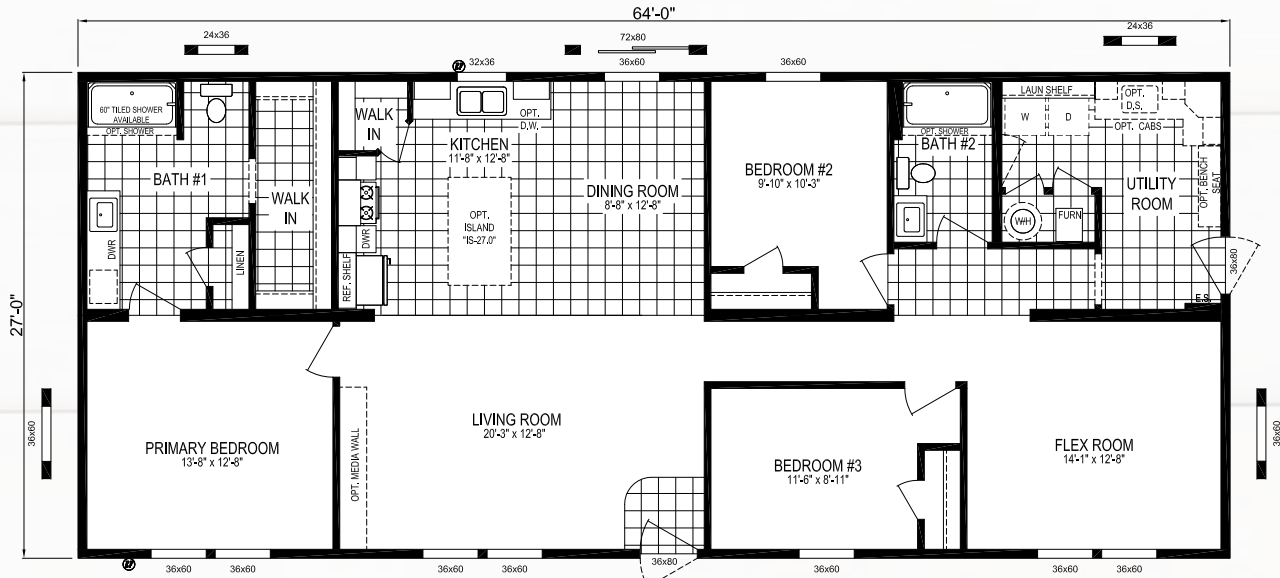
DELUXE BATH OPTION "A"

MODEL NUMBER:

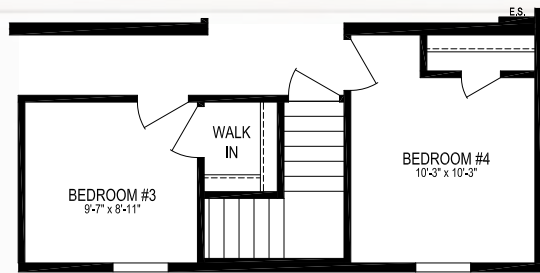
# 6428-MS030-1

64 x 28 | 1728 Sq. Ft. 3 Bed | 2 Bath

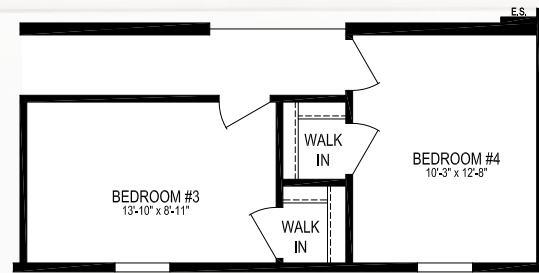
## FIELD POINT



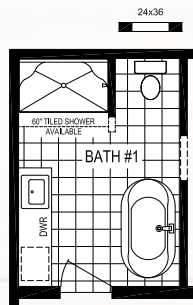
**QUARTZcafé**



OPTIONAL BASEMENT STAIRWELL  
\* ONLY AVAILABLE WITH 4TH  
BEDROOM OPTION



4TH BEDROOM OPTION



DELUXE BATH OPTION "A"

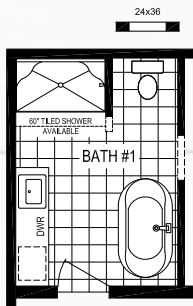
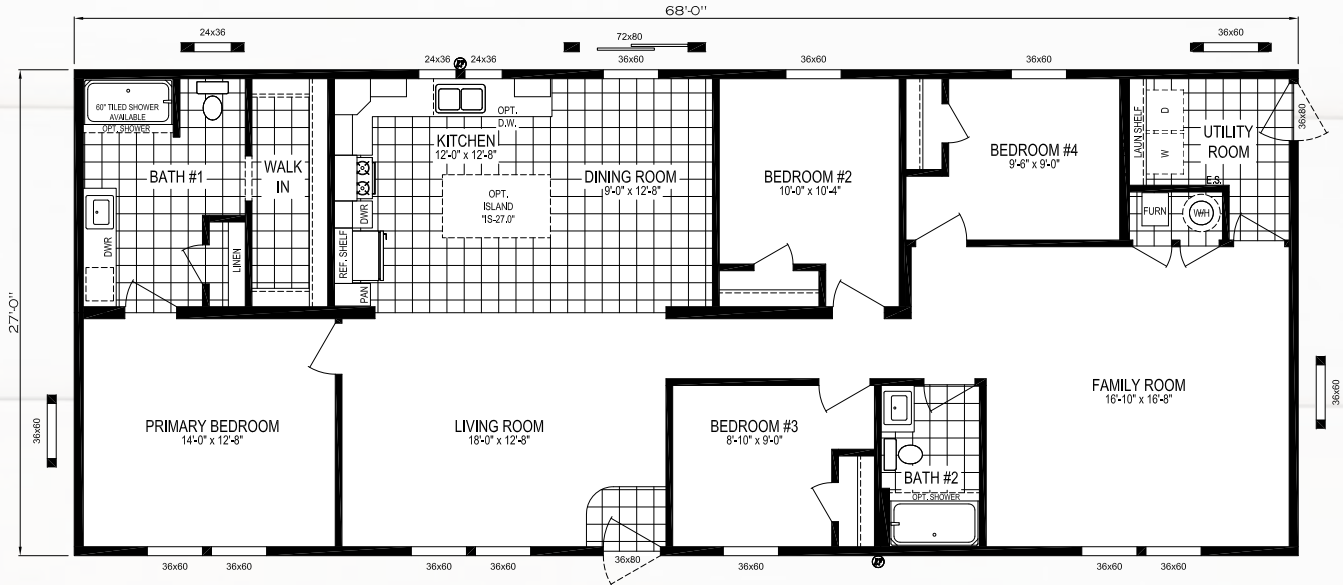
MODEL NUMBER:

# 6828-MS048-1

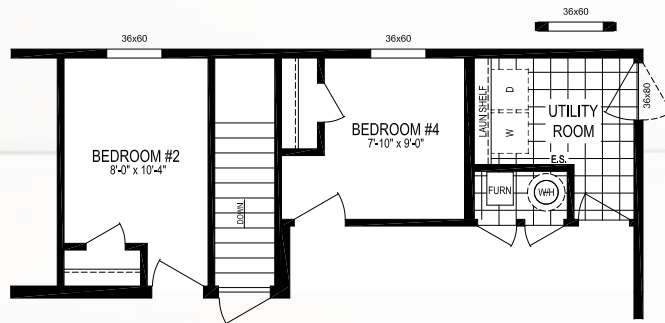
CLICK HERE FOR A 3D  
TOUR OF THIS FLOORPLAN!

68 x 28 | 1836 Sq. Ft. 4 Bed | 2 Bath

## FARMINGTON RD



DELUXE BATH OPTION "A"



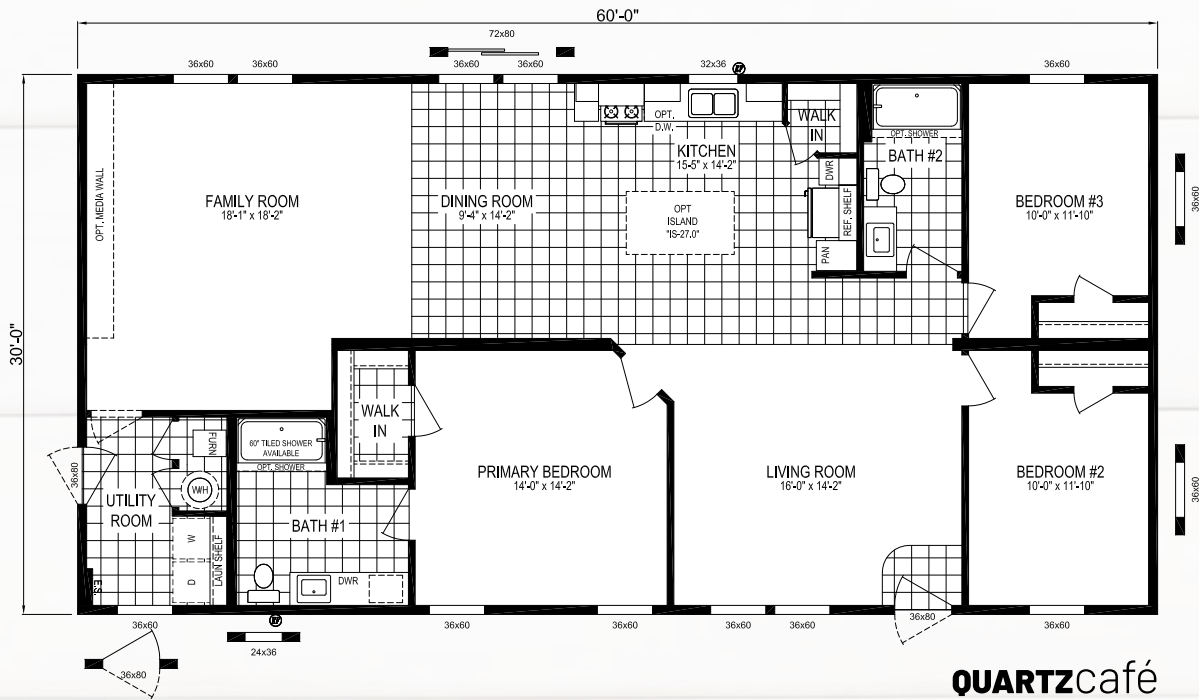
OPTIONAL BASEMENT STAIRWELL

MODEL NUMBER:

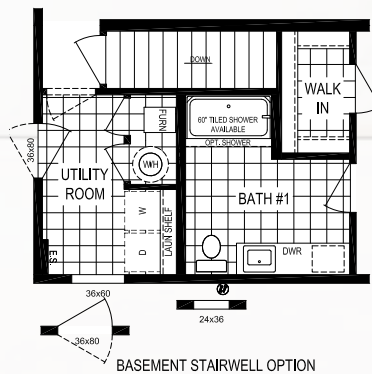
# 6030-MS037-1

60 x 30 | 1800 Sq. Ft. 3 Bed | 2 Bath

## MADISON AVE



**QUARTZ**café



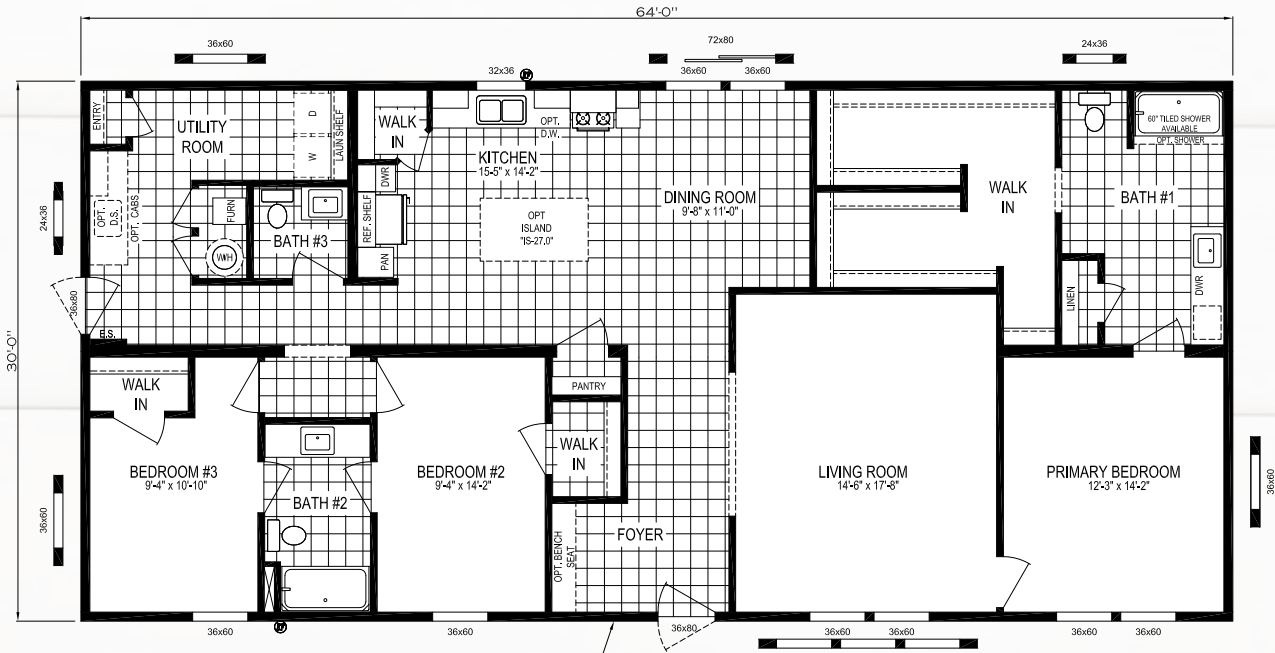
BASEMENT STAIRWELL OPTION

MODEL NUMBER:

# 6430-MS038-1

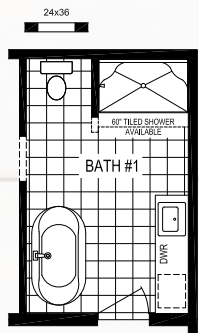
64 x 30 | 1920 Sq. Ft. 3 Bed | 2.5 Bath

## HIGHLAND PARK

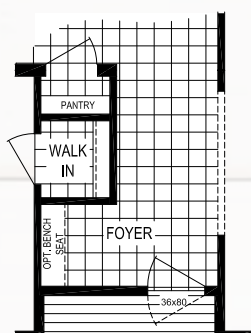


**QUARTZcafé**

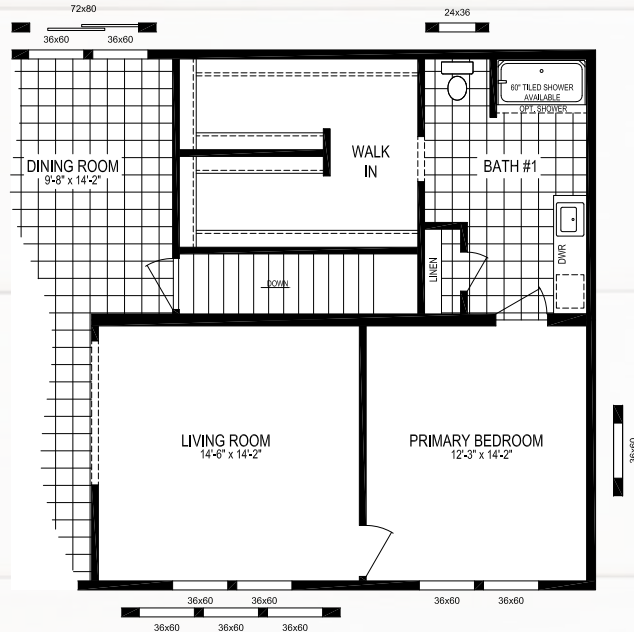
ADDITIONAL FOYER WINDOW REQUIRES RECESSED ENTRY OPTION



DELUXE BATH OPTION "A"



RECESSED ENTRY OPTION



BASEMENT STAIRWELL OPTION



MODULAR HOMES

THE  
*Residence*

**DORMER OPTIONS**



**10' Open Dormer  
3/12 Pitch Only**



**20' Hinged Dormer w/6' Eyebrow  
5/12 Pitch Only**



**20' Hinged Dormer w/Continuous Eave  
5/12 Pitch Only**



**20' Open Dormer  
3/12 Pitch Only**

MODULAR HOMES

# THE *Residence*

## EXTERIOR PACKAGES



### **Deluxe Exterior Package**

with Column, Eyebrow,  
Shake & Window Surround

(Shown with Optional Shake & Shutters)



### **Corner Window Hitch End**

- Eyebrow on Hitch End
- Board & Batton Siding
- (2) Window Surrounds

\* May require a window move



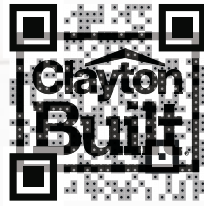
### **The Residence Exterior Package**

- 20 ft. Dormer
- Board & Batton Siding
- Farmhouse Shutter &  
Vinyl Window Surrounds
- Available in 4 Color Packages

MODULAR HOMES

THE  
*Residence*

BRANDS



Clayton Homes are Built Using Quality Brands

ecobee



Turn to the Experts.™

**Kwikset**

FRIGIDAIRE



# THE *Residence*

MODULAR HOMES

2024

Your Local Home Builder



437 N. Main Street  
Middlebury, IN 46540  
574.825.7500  
574.825.7569 fax

[www.claytonmiddlebury.com](http://www.claytonmiddlebury.com)

Because our company has a continuous product update process, specifications, floor plan lay-out and dimensions shown on this literature are subject to change without notice or obligations. Construction and design specifications as well as features presented conceptual, therefore should not be used as actual construction data and may not be offered in all series or models. Our Retailer will provide accurate, up-to-date information on available options and specifications for your home. 12/23

**Clayton**  
middlebury