



EASY STREET

WHERE THE LIVING IS EASY.



MODULAR AND MULTI SECTION HOMES



STANDARD FEATURES MODULAR AND MULTI SECTION HOMES

INTERIOR

SHAW CARPET 28 OZ BERBER WITH 5# REBOND PAD TACK STRIP
9' FLAT CEILING FINISH THROUGHOUT
STIPPLE CEILING FINISH
FINISHED CEILING JOINTS
1/2" DRYWALL THROUGHOUT
BUILDER GRADE PRIMER THROUGHOUT
"CLOSET MAID" VENTILATED WIRE SHELVING IN CLOSETS
LED RECESSED CAN LIGHTS THROUGHOUT
MDF 3" DOOR & WINDOW CASING AND 5" BASE TRIM
2-PANEL WHITE INTERIOR DOORS
32" INTERIOR DOORS WHERE APPLICABLE
TRANSOMS OVER DOORSIDE WINDOWS
TRAY CEILING - PRIMARY BEDROOM
DRAPES

KITCHEN

KITCHEN CABINETS TO CEILING - VBP
HARDWOOD CABINET STILES
HARDWOOD CABINET DOORS
CONCEALED EUROPEAN STYLE COUNTER-SUNK HINGES
3/4" ADJUSTABLE SHELVES IN OVERHEAD CABINETS
27" X 10" STAINLESS STEEL KITCHEN SINK
W/BLACK GOOSENECK FAUCET
FRIGIDAIRE APPLIANCES
30" DLX ELECTRIC RANGE - STAINLESS STEEL
26 CU FT SIDE BY SIDE REFRIGERATOR
W/ICEMAKER - STAINLESS STEEL
DISHWASHER - STAINLESS STEEL
UPGRADED RANGE HOOD
RECESSED LED CAN LIGHTS IN KITCHEN
BANK OF DRAWERS
DRAWER OVER DOOR CONSTRUCTION
CAN LIGHT IN DINING ROOM - VBP
PENDENTS OVER ISLAND
SOFT CLOSE KITCHEN DRAWERS & DOORS
BLACK 5-PNL PANTRY DOOR

INSULATION

ZONE III INSULATION PACKAGE
- R-38 BLOWN CEILING INSULATION
W/VAPOR BARRIER
- R-21 FIBERGLASS INSULATION IN WALLS
- R-27 FIBERGLASS INSULATION IN FLOORS
- FIBERGLASS HEAT DUCTS W/IN-FLOOR CROSSOVER

BATHS

60" CERAMIC SHOWER & FREE STANDING TUB
IN PRIMARY BATH
60" 1PC FIBERGLASS TUB/SHOWER - BATH 2
BANK OF DRAWERS IN PRIMARY BATH
HIGH PRESSURE LAMINATED COUNTERTOPS & BACKSPASH
W/MICROBAN ANTIMICROBIAL TECHNOLOGY
PORCELAIN COMMODES
SQUARE PORCELAIN LAVS
POWER EXHAUST FANS
LIGHTED VANITY MIRRORS - PRIMARY BATH
OVER MIRROR VANITY LIGHTS - BATH 2
36" TALL VANITIES IN BOTH BATHS
PFISTER METAL FAUCETS - BLACK

EXTERIOR

5/12 ROOF PITCH
GAF ARCHITECTURAL FIBERGLASS SHINGLES
METAL FACIA
VINYL VENTED SOFFIT
36" CRAFTSMAN 3-LIGHT FRONT DOOR
W/DEADBOLT & THUMB LATCH HANDLE
36" PRAIRIE REAR DOOR W/DEADBOLT
EXTERIOR LIGHT AT FRONT & REAR DOOR
4 1/2" DUTCH LAP VINYL SIDING
(2) EXTERIOR GFI RECEPTACLE & FAUCETS
LOW E VINYL WINDOWS W/3 OVER CLEAR GRIDS
VINYL WINDOW SURROUNDS (DOORSIDE)
RECESSED ENTRY
VINYL ARGON GAS WINDOWS

UTILITIES

200 AMP SERVICE PANEL
ELECTRIC CARRIER FURNACE
ECOBEE 5 WIFI THERMOSTAT
40 GALLON HYBRID HEAT PUMP WATER HEATER
WATER HEATER PAN WITH EXTERIOR DRAIN
PEX PLUMBING
WIRE & PLUMB FOR WASHER
WIRE & VENT FOR DRYER
RECESSED WHOLE HOUSE SHUT OFF
WATER SHUT OFFS THROUGHOUT
GFCI PROTECTED RECEPTACLES IN KITCHEN AND BATHS
FURNACE & WATER HEATER CLOSE-OFF DR
SMOKE DETECTOR
3 WAY SWITCH - HALL

CONSTRUCTION

STEEL I-BEAM FRAME W/DETACHABLE HITCH
2" X 8" FLOOR JOISTS - 16" O.C.
T&G OSB FLOOR DECKING GLUED & FASTENED
2" X 6" EXTERIOR WALLS - 16" O.C.
30LB. ROOF LOAD
RIDGE VENT ROOF VENTING
LINKED SMOKE DETECTORS
W/BATTERY BACK-UP IN MAIN LIVING & ALL BEDROOMS
7/16" OSB EXTERIOR SHEATHING W/WINDWRAP
KWIKSET INTERIOR & EXTERIOR DOOR KNOBS
W/MICROBAN ANTIMICROBIAL TECHNOLOGY
WHOLE HOUSE VENTILATION FAN

MODULAR SPECIFICATIONS

2" X 10" FLOOR JOISTS 16" O.C.
R-21 WALL INSULATION
R-49 ROOF INSULATION
2" X 4" INTERIOR WALLS
2" X 4" MATE LINE WALL
40/40 200 AMP SERVICE PANEL
METAL CROSS BRIDGING
SMOKE/CARBON MONOXIDE DETECTOR
WISCONSIN HAS NO PLUMBING

MODEL NUMBER:

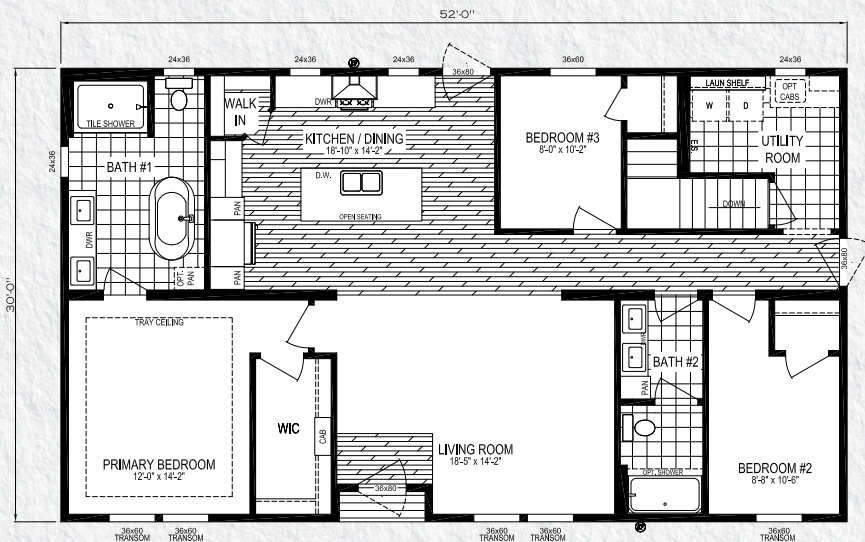
5230-MS050

52 x 30 | 1560 Sq. Ft. 3 Bed | 2 Bath

UTOPIA



Crawspace Layout



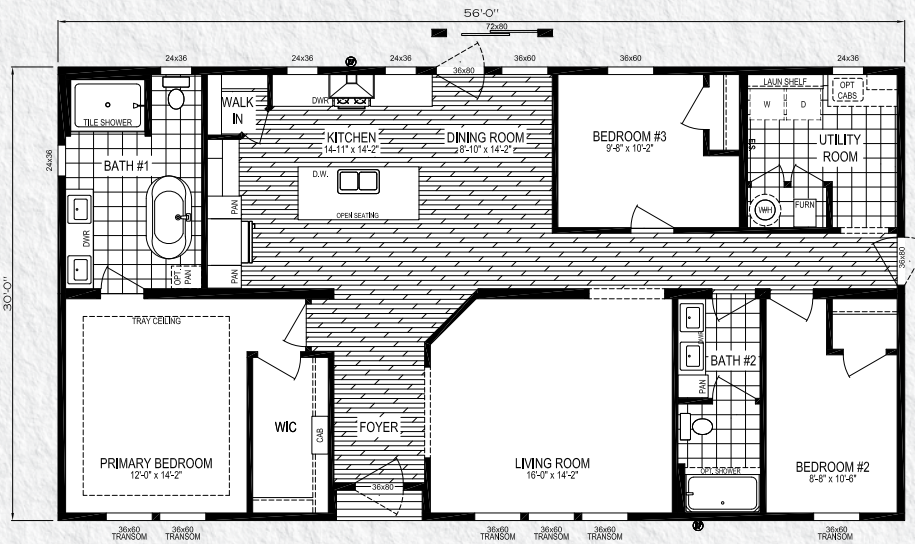
Basement Layout

MODEL NUMBER:

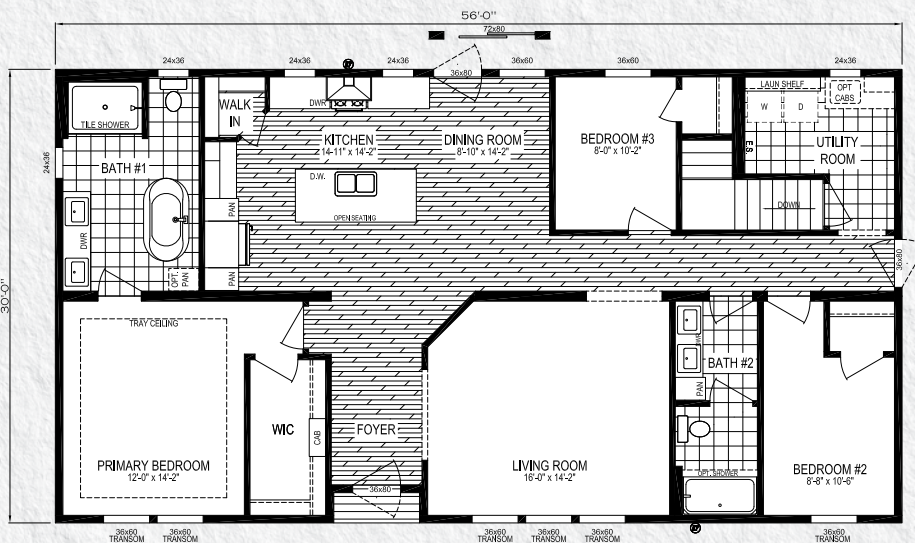
5630-MS051

56 x 30 | 1680 Sq. Ft. 3 Bed | 2 Bath

GOOD LIFE



Crawlspace Layout



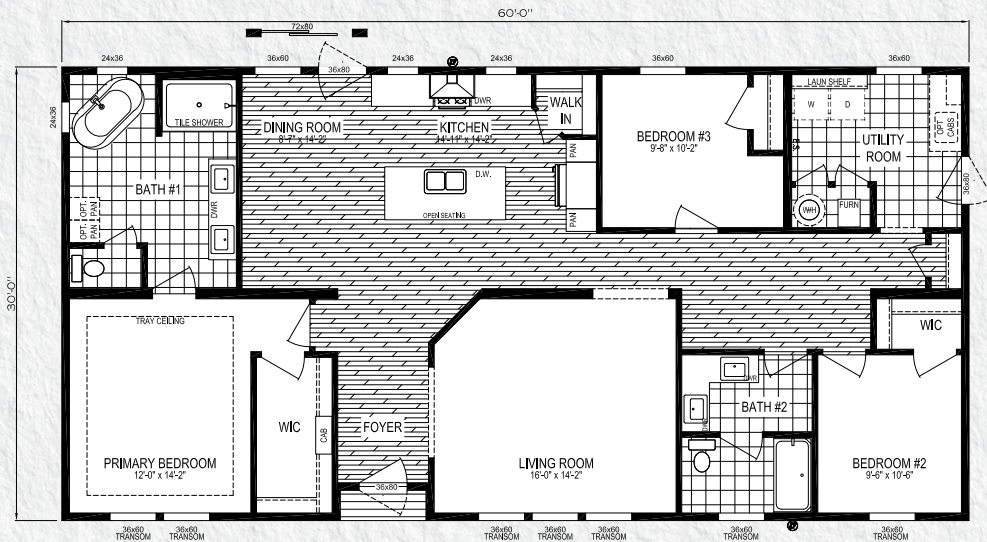
Basement Layout

MODEL NUMBER:

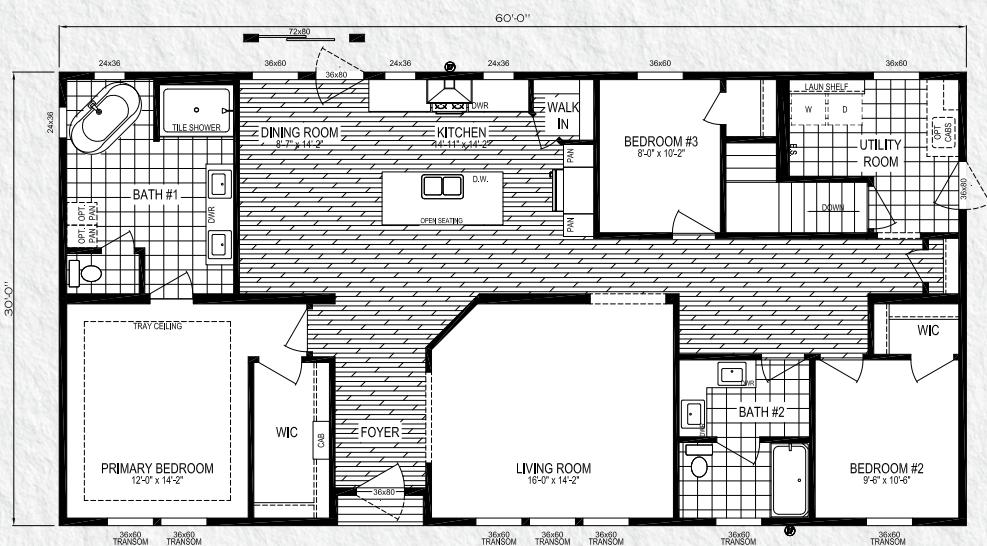
6030-MS052

60 x 30 | 1800 Sq. Ft. 3 Bed | 2 Bath

THE DREAM



Crawlspace Layout



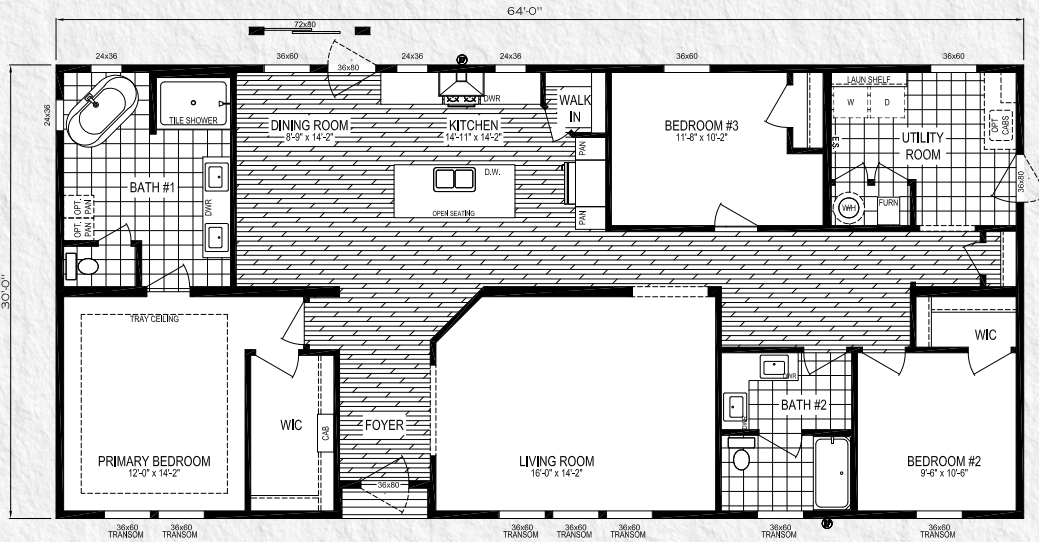
Basement Layout

MODEL NUMBER:

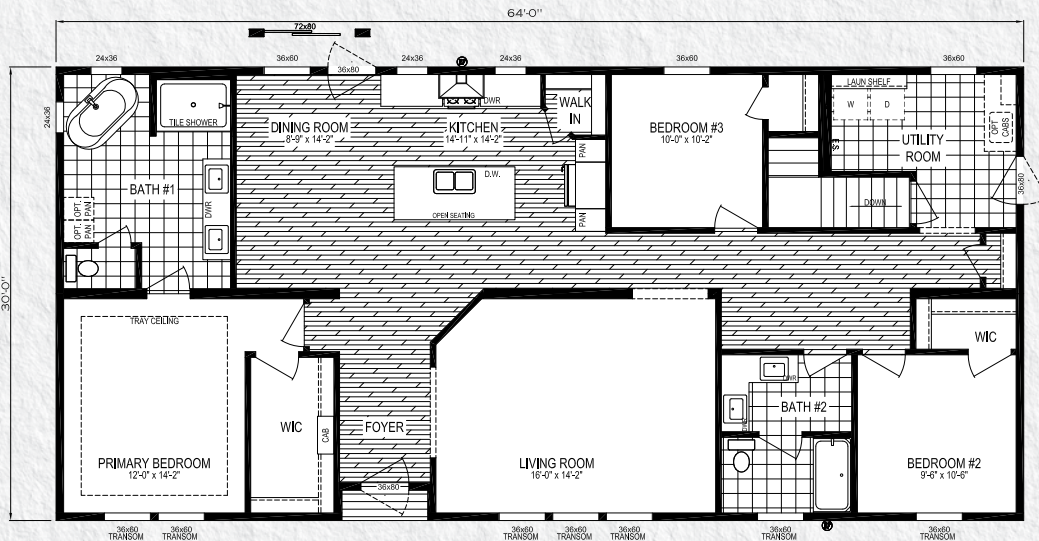
6430-MS053

64 x 30 | 1920 Sq. Ft. 3 Bed | 2 Bath

PARADISE



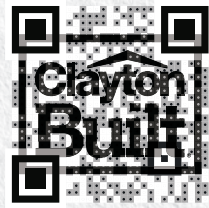
Crawspace Layout



Basement Layout



BRANDS



Clayton Homes are Built Using Quality Brands

ecobee



Turn to the Experts.™

Kwikset

FRIGIDAIRE





WHERE THE LIVING IS EASY.



Your Local Home Builder

MODULAR AND MULTI SECTION HOMES 2024



437 N. Main Street
Middlebury, IN 46540
574.825.7500
574.825.7569 fax

www.claytonmiddlebury.com

Because our company has a continuous product update process, specifications, floor plan lay-out and dimensions shown on this literature are subject to change without notice or obligations. Construction and design specifications as well as features presented conceptual, therefore should not be used as actual construction data and may not be offered in all series or models. Our Retailer will provide accurate, up-to-date information on available options and specifications for your home. 11/23

Clayton
middlebury